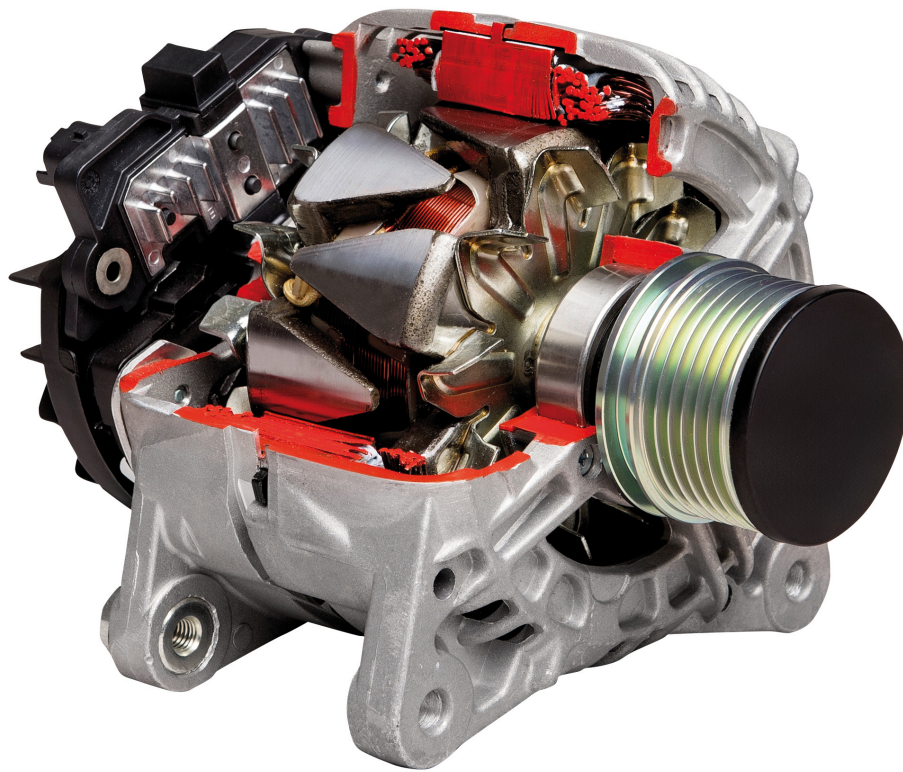




QualityTested®
Automotive Spare Parts

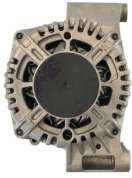
ALTERNATORS ALTERNATORI



www.qualitytested.com

CATALOGUE
FOR CARS AND
COMMERCIAL VEHICLES

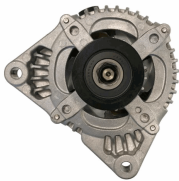
CATALOGO
PER AUTOVETTURE E
VEICOLI COMMERCIALI

Electrics
AL-101JM
Alternator


ALFA ROMEO MITO (955)
 CITROEN NEMO Station wagon
 FIAT 500 (312)
 FIAT 500 C (312)
 FIAT DOBLO (119)
 FIAT FIORINO MPV / Space wagon (225_)

OE
 13117279
 13117279YQ
 13197577
 13243463
 13283344
 1539099

Alternator Charge Current [A]: 90
 Belt Pulley [mm]: 54
 Clamp: M8 B+M5 D+
 Number of Ribs: 6
 Pulleys: with free-wheel belt pulley
 Voltage [V]: 14

AL-102JM
Alternator


FORD C-MAX (DM2)
 FORD FIESTA V (JH_, JD_)
 FORD FOCUS C-MAX
 FORD FOCUS II (DA_)
 FORD FOCUS II Cabriolet
 FORD FOCUS II Station wagon (DA_)

OE
 1229258
 1229259
 1255711
 1255712
 1477737
 1477738

Alternator Charge Current [A]: 150
 Belt Pulley [mm]: 54
 Clamp: M8 B+ [FR-SIG-A]
 Number of Ribs: 6
 Pulleys: with free-wheel belt pulley
 Voltage [V]: 14

AL-103JM
Alternator


ALFA ROMEO 145 (930)
 ALFA ROMEO 146 (930)
 ALFA ROMEO 147 (937)
 ALFA ROMEO 156 (932)
 ALFA ROMEO 156 Sportwagon (932)
 ALFA ROMEO GT (937)

OE
 46554408
 46763533
 46763534
 46765838
 46774430
 46782212

Alternator Charge Current [A]: 100
 Belt Pulley [mm]: 62
 Clamp: M8 B+ M5 D+
 Number of Ribs: 6
 Pulleys: with multi-belt pulley
 Voltage [V]: 14

AL-104JM
Alternator


ALFA ROMEO 147 (937)
 ALFA ROMEO 156 (932)
 ALFA ROMEO 156 Sportwagon (932)
 ALFA ROMEO 166 (936)
 FIAT BRAVA (182)
 FIAT BRAVO I (182)

OE
 46543023
 46544329
 46748353
 46809068
 60815944
 60815953

Alternator Charge Current [A]: 120
 Belt Pulley [mm]: 62
 Clamp: M8 B+ M5 D+
 Number of Ribs: 6
 Pulleys: with free-wheel belt pulley
 Voltage [V]: 14

AL-105JM
Alternator


ALFA ROMEO MITO (955)
 FIAT 500 (312)
 FIAT 500 C (312)
 FIAT 500L
 FIAT BRAVO II (198)
 FIAT DOBLO (119)

OE
 1202290
 1202445
 1535437
 1673521
 1705484
 2706074220

Alternator Charge Current [A]: 105
 Belt Pulley [mm]: 54
 Clamp: M8 B+, M5 D+
 Number of Ribs: 5
 Pulleys: with multi-belt pulley
 Voltage [V]: 14

Electrics
AL-106JM
Alternator


ALFA ROMEO 159 (939)
 ALFA ROMEO 159 Sportwagon (939)
 ALFA ROMEO BRERA
 ALFA ROMEO GIULIETTA (940)
 ALFA ROMEO MITO (955)
 ALFA ROMEO SPIDER (939)

OE
 0000051884886
 0051884886
 1202272
 1202274
 1204456
 1204457

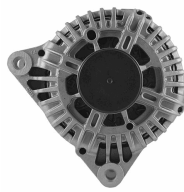
Alternator Charge Current [A]: 120
 Belt Pulley [mm]: 54
 Clamp: M8 B+ M5 D+
 Number of Ribs: 6
 Pulleys: with free-wheel belt pulley
 Voltage [V]: 14

AL-107JM
Alternator


AUDI A1 (8X1, 8XF)
 AUDI A1 Sportback (8XA, 8XK)
 AUDI A2 (8Z0)
 AUDI A3 (8L1)
 AUDI A3 (8P1)
 AUDI A3 Cabriolet (8P7)

OE
 021903025K
 021903025T
 028903026H
 028903028E
 028903029G
 028903029GX

Alternator Charge Current [A]: 140
 Belt Pulley [mm]: 56
 Clamp: M8 B+ [L-DFM]
 Number of Ribs: 6
 Pulleys: with free-wheel belt pulley
 Voltage [V]: 14

AL-108JM
Alternator


CITROEN C3 I (FC_)
 CITROEN C4 Picasso I (UD_)
 CITROEN C5 I (DC_)
 CITROEN C8 (EA_, EB_)
 LANCIA PHEDRA (179)
 PEUGEOT 206 2 volumi /Coda spiovente (2A/C)

OE
 12317794970
 1638095180
 3140069K00
 3140069K00000
 5702
 5702AR

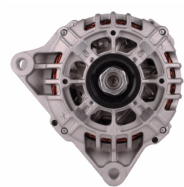
Alternator Charge Current [A]: 150
 Belt Pulley [mm]: 54
 Clamp: M8 B+ [L-DFM]
 Number of Ribs: 6
 Pulleys: with free-wheel belt pulley
 Voltage [V]: 12

AL-109JM
Alternator


FORD B-MAX (JK)
 FORD C-MAX II
 FORD ECOSPORT
 FORD FIESTA VI
 FORD FOCUS III
 FORD FOCUS III Tre volumi

OE
 1376501
 1387927
 1506299
 1506300
 1685793
 1704769

Alternator Charge Current [A]: 150
 Belt Pulley [mm]: 54
 Clamp: M8 B+ [LIN]
 Number of Ribs: 6
 Pulleys: with free-wheel belt pulley
 Voltage [V]: 14

AL-110JM
Alternator


CITROEN BERLINGO (B9)
 CITROEN BERLINGO (MF)
 CITROEN C-ELYSEE
 CITROEN C2 (JM_)
 CITROEN C3 I (FC_)
 CITROEN C3 II

OE
 27060YV010
 5702000000
 570200000000
 5702A2
 5702A3
 5702A4

Alternator Charge Current [A]: 90
 Belt Pulley [mm]: 49
 Clamp: M8 B+ [L-DFM]
 Number of Ribs: 6
 Pulleys: with multi-belt pulley
 Voltage [V]: 12

Electrics
AL-111JM
Alternator


OPEL ASTRA H (L48)
 OPEL ASTRA H GTC (L08)
 OPEL ASTRA H Station wagon (L35)
 OPEL ASTRA H Tre volumi (L69)
 VAUXHALL ASTRA Mk V (H) 2 volumi /Coda spiovente

OE

1204619
 2506102
 2506103
 6204183
 6204199
 6204200

Alternator Charge Current [A]: 100
 Alternator Type: incl. vacuum pump
 Belt Pulley [mm]: 60
 Clamp: M8 B+ [F-L]
 Number of Ribs: 6
 Pulleys: with free-wheel belt pulley
 Voltage [V]: 14

AL-112JM
Alternator


ALFA ROMEO 159 (939)
 ALFA ROMEO 159 Sportwagon (939)
 FIAT GRANDE PUNTO (199)
 FIAT SEDICI
 FIAT STILO (192)
 FIAT STILO Multi Wagon (192)

OE

1204434
 1204436
 12759595
 13117236
 13117341
 13117341AA

Alternator Charge Current [A]: 130
 Belt Pulley [mm]: 62
 Clamp: M8 B+ M6 DFM, M5 D+
 Number of Ribs: 6
 Pulleys: with free-wheel belt pulley
 Voltage [V]: 14

AL-113JM
Alternator


ALFA ROMEO MITO (955)
 CITROEN NEMO Station wagon
 FIAT 500 (312)
 FIAT 500 C (312)
 FIAT DOBLO (119)
 FIAT FIORINO MPV / Space wagon (225_)

OE

1204429
 13153237
 13197578
 13256928
 13256929
 1606439580

Alternator Charge Current [A]: 120
 Belt Pulley [mm]: 54
 Clamp: M8 B+ M5 D+
 Number of Ribs: 6
 Pulleys: with free-wheel belt pulley
 Voltage [V]: 14

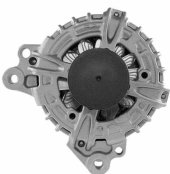
AL-114JM
Alternator


OPEL AGILA (A) (H00)
 OPEL AGILA (B) (H08)
 OPEL ASTRA H (L48)
 OPEL ASTRA H GTC (L08)
 OPEL ASTRA H Station wagon (L35)
 OPEL ASTRA H Tre volumi (L69)

OE

13222935
 13222936
 13256931
 13256932
 6204258
 6204259

Alternator Charge Current [A]: 120
 Belt Pulley [mm]: 54
 Clamp: M8 B+ [DFM-L]
 Number of Ribs: 6
 Pulleys: with free-wheel belt pulley
 Voltage [V]: 12

AL-115JM
Alternator


AUDI A1 (8X1, 8XF)
 AUDI A1 Sportback (8XA, 8XK)
 AUDI A3 (8V1)
 AUDI A3 Cabriolet (8V7)
 AUDI A3 Limousine (8VS)
 AUDI A3 Sportback (8VA)

OE

03G903016B
 03G903016BX
 03G903016E
 03G903016EX
 03G903016G
 03G903016GX

Alternator Charge Current [A]: 140
 Belt Pulley [mm]: 49
 Clamp: M8 B+ [LIN]
 Number of Ribs: 6
 Pulleys: with free-wheel belt pulley
 Voltage [V]: 14

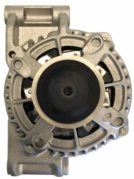
Electrics
AL-116JM
Alternator


MITSUBISHI L 200 (K7_T, K6_T)
 MITSUBISHI PAJERO II (V3_W, V2_W, V4_W)
 MITSUBISHI PAJERO II Canvas Top (V2_W,
 V4_W)
 MITSUBISHI PAJERO SPORT (K90)

OE

1800A005
 1800A243
 A002T1199AT
 A002T81499
 A002T82899
 A002T82899A

Alternator Charge Current [A]: 90
 Alternator Type: incl. vacuum pump
 Belt Pulley [mm]: 76
 Clamp: M8 [L-S]
 Number of Ribs: 2
 Pulleys: Without multi-belt pulley
 Voltage [V]: 12

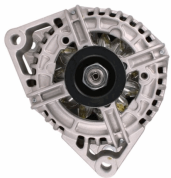
AL-117JM
Alternator


ALFA ROMEO MITO (955)
 CHRYSLER YPSILON
 FIAT 500 (312)
 FIAT 500 C (312)
 FIAT 500L
 FIAT 500X

OE

1608858180
 51880172
 51880173
 51880175
 51984058
 51993603

Alternator Charge Current [A]: 120
 Belt Pulley [mm]: 54
 Clamp: M8 B+ [LIN]
 Number of Ribs: 6
 Pulleys: with free-wheel belt pulley
 Voltage [V]: 12

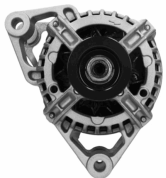
AL-118JM
Alternator


OPEL ASTRA CLASSIC (L48)
 OPEL ASTRA CLASSIC Station wagon
 OPEL ASTRA G 2 volumi /Coda spiovente (F48_,
 F08_)
 OPEL ASTRA G Station wagon (F35_)
 OPEL ASTRA G Tre volumi (F69_)

OE

09117935
 10480226
 1204155
 13143128
 13156053
 2437121

Alternator Charge Current [A]: 120
 Belt Pulley [mm]: 54
 Clamp: M8 B+
 Number of Ribs: 5
 Pulleys: with multi-belt pulley
 Voltage [V]: 12

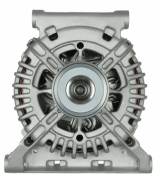
AL-119JM
Alternator


OPEL AGILA (A) (H00)
 OPEL ASTRA H Station wagon (L35)
 OPEL CORSA B (73_, 78_, 79_)
 OPEL CORSA D
 VAUXHALL AGILA Mk I (A)
 VAUXHALL CORSA Mk I (B)

OE

09117932
 09133599
 1204136
 13156052
 24437119
 24463064YJ

Alternator Charge Current [A]: 70
 Belt Pulley [mm]: 52
 Clamp: M8 B+
 Number of Ribs: 5
 Pulleys: with multi-belt pulley
 Voltage [V]: 12

AL-120JM
Alternator


MERCEDES-BENZ CLASSE A (W169)
 MERCEDES-BENZ CLASSE B (W245)

OE

6401540102
 6401540202
 6401540302
 6401540402
 6401540502
 640154050280

Alternator Charge Current [A]: 150
 Belt Pulley [mm]: 50
 Clamp: M8 B+ [LIN]
 Number of Ribs: 5
 Pulleys: with free-wheel belt pulley
 Voltage [V]: 12

Electrics
AL-121JM
Alternator


CITROEN BERLINGO (B9)
 CITROEN BERLINGO (K9)
 CITROEN C-ELYSEE
 CITROEN C3 AIRCROSS II
 CITROEN C3 II
 CITROEN C3 III (SX)

OE

1606859180
 1609957280
 1611285580
 1612458880
 1623862880
 1638094380

Alternator Charge Current [A]: 150
 Belt Pulley [mm]: 54
 Clamp: M8 B+ [LIN]
 Number of Ribs: 6
 Pulleys: with free-wheel belt pulley
 Voltage [V]: 14

AL-122JM
Alternator


AUDI A2 (8Z0)
 AUDI A3 (8L1)
 AUDI A3 (8P1)
 AUDI A3 Cabriolet (8P7)
 AUDI A3 Sportback (8PA)
 AUDI TT (8N3)

OE

021903025H
 021903025J
 028903028C
 028903028CX
 028903028D
 028903028DX

Alternator Charge Current [A]: 110
 Belt Pulley [mm]: 56
 Clamp: M8 B+ [L-DFM]
 Number of Ribs: 6
 Pulleys: with multi-belt pulley
 Voltage [V]: 14

AL-123JM
Alternator


AUDI A2 (8Z0)
 AUDI A3 (8L1)
 AUDI TT (8N3)
 AUDI TT Roadster (8N9)
 FORD GALAXY (WGR)
 SEAT ALHAMBRA (7V8, 7V9)

OE

038903018LX
 038903018P
 038903018PX
 038903023
 038903023K
 038903023L

Alternator Charge Current [A]: 90
 Belt Pulley [mm]: 56
 Clamp: M8 B+ [L-DFM]
 Number of Ribs: 6
 Pulleys: with free-wheel belt pulley
 Voltage [V]: 12

AL-124JM
Alternator


ALFA ROMEO AR 6 Furgonato (280)
 ALFA ROMEO AR 8 Furgonato (280)
 ALFA ROMEO AR 8 Pianale piatto/Telaio (280)
 FIAT 127
 FIAT 127 Panorama
 FIAT 131

OE

116760506000
 116760506100
 1516538R
 1516607R
 2022607
 2995030

Alternator Charge Current [A]: 55
 Belt Pulley [mm]: 86
 Clamp: M6,D+
 Number of Ribs: 1
 Pulleys: Without multi-belt pulley
 Voltage [V]: 12

AL-125JM
Alternator


AUTOBIANCHI Y10
 FIAT PANDA (141A_)
 FIAT TIPO (160)
 FIAT UNO (146A/E)
 LANCIA Y10 (156)

OE

0000007565832
 0000046231660
 11572630
 11572690
 11572700
 46231657

Alternator Charge Current [A]: 55
 Belt Pulley [mm]: 65
 Clamp: M6,D+
 Number of Ribs: 1
 Pulleys: Without multi-belt pulley
 Voltage [V]: 12

Electrics
AL-126JM
Alternator


FIAT 127
 FIAT CINQUECENTO (170)
 FIAT PANDA (141A_)
 FIAT SEICENTO (187)
 FIAT UNO (146A/E)
 LANCIA A 112

OE

0003934961
 2702061013
 2702061100
 2702061130
 4242498
 4274759

Alternator Charge Current [A]: 55
 Belt Pulley [mm]: 66
 Clamp: M6,D+
 Number of Ribs: 1
 Pulleys: Without multi-belt pulley
 Voltage [V]: 12

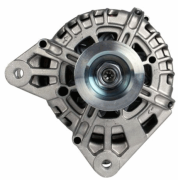
AL-127JM
Alternator


ALFA ROMEO 33 (907A)
 ALFA ROMEO 6 (119)
 ALFA ROMEO 75 (162B)
 FIAT CROMA (154)
 LANCIA THEMA (834)
 LANCIA THEMA SW (834)

OE

1204072
 1204344
 294394800
 46231726
 46231758
 4765931

Alternator Charge Current [A]: 65
 Belt Pulley [mm]: 93
 Clamp: M6,D+
 Number of Ribs: 2
 Pulleys: Without multi-belt pulley
 Voltage [V]: 12

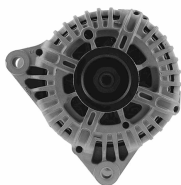
AL-128JM
Alternator


RENAULT CLIO Grandtour (KR0/1_)
 RENAULT CLIO Grandtour IV
 RENAULT CLIO III (BR0/1, CR0/1)
 RENAULT CLIO IV
 RENAULT MODUS / GRAND MODUS (F/JP0_)
 RENAULT TWINGO II (CN0_)

OE

231000646R
 7711368178
 7711368602
 7711368683
 7711497091
 7711497092

Alternator Charge Current [A]: 120
 Belt Pulley [mm]: 55
 Clamp: M8 B+ [BSS]
 Number of Ribs: 7
 Pulleys: with multi-belt pulley
 Voltage [V]: 14

AL-129JM
Alternator


CITROEN BERLINGO (MF)
 CITROEN C1 (PM_, PN_)
 CITROEN C2 (JM_)
 CITROEN C3 I (FC_)
 CITROEN C3 Pluriel (HB_)
 CITROEN C4 Coupé (LA_)

OE

27060YU020
 27060YV020
 3140073J00
 3140073J00000
 5702A6
 5702A7

Alternator Charge Current [A]: 150
 Belt Pulley [mm]: 54
 Clamp: M8 B+ [L-DFM]
 Number of Ribs: 6
 Pulleys: with multi-belt pulley
 Voltage [V]: 14

AL-130JM
Alternator


ABARTH PUNTO EVO (199_)
 ALFA ROMEO GIULIETTA (940)
 ALFA ROMEO MITO (955)
 FIAT 500 (312)
 FIAT 500 C (312)
 FIAT 500L

OE

51788658
 51854903
 51927506
 52003527
 52003621
 71796446

Alternator Charge Current [A]: 120
 Belt Pulley [mm]: 54
 Clamp: M8 B+ M5 D+
 Number of Ribs: 5
 Pulleys: with free-wheel belt pulley
 Voltage [V]: 14

Electrics
AL-131JM
Alternator


DACIA DOKKER
 DACIA DUSTER
 DACIA LODGY
 DACIA LOGAN II
 DACIA LOGAN MCV II
 DACIA SANDERO II

OE

231000026R
 7711368381
 7711497409
 8200390676
 8200660034

Alternator Charge Current [A]: 160
 Belt Pulley [mm]: 55
 Clamp: M8 B+ [BSS]
 Number of Ribs: 6
 Pulleys: with free-wheel belt pulley
 Voltage [V]: 14

AL-132JM
Alternator


CHRYSLER DELTA
 FIAT FREEMONT (JF_)

OE

56029574AA
 K56029574AA
 K56029574AB
 P56029574AA
 TT13138

Alternator Charge Current [A]: 130
 Belt Pulley [mm]: 54
 Clamp: M8 B+ [LIN]
 Number of Ribs: 6
 Pulleys: with free-wheel belt pulley
 Voltage [V]: 14

AL-133JM
Alternator


TOYOTA AURIS (NRE15_, ZZE15_, ADE15_,
 ZRE15_, NDE15_)
 TOYOTA AVENSIS
 TOYOTA AVENSIS (T25_)
 TOYOTA AVENSIS Station wagon (T25)
 TOYOTA AVENSIS Station wagon (ZRT27,

OE

270600G010
 270600G011
 270600G01184
 270600R060
 270600R070
 270600R071

Alternator Charge Current [A]: 100
 Belt Pulley [mm]: 58
 Clamp: [RLO-DFM-IG-L]
 Number of Ribs: 7
 Pulleys: with free-wheel belt pulley
 Voltage [V]: 14

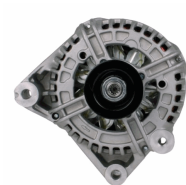
AL-134JM
Alternator


LEXUS IS II (GSE2_, ALE2_, USE2_)
 TOYOTA AURIS (NRE15_, ZZE15_, ADE15_,
 ZRE15_, NDE15_)
 TOYOTA AVENSIS
 TOYOTA AVENSIS Station wagon (ZRT27,
 ADT27)

OE

0210802470
 270600G021
 270600R080
 2706026030
 270602603084
 2706026060

Alternator Charge Current [A]: 150
 Belt Pulley [mm]: 58
 Clamp: M6 B+ [RLO-DFM-IG-L]
 Number of Ribs: 7
 Pulleys: with free-wheel belt pulley
 Voltage [V]: 14

AL-135JM
Alternator


BMW 3 (E46)
 BMW 3 Cabriolet (E46)
 BMW 3 Compact (E46)
 BMW 3 Coupe (E46)
 BMW 3 Touring (E46)
 BMW X3 (E83)

OE

12317789980
 12317789983
 12317797660
 12317797661
 7789980
 7789980A101

Alternator Charge Current [A]: 150
 Belt Pulley [mm]: 54
 Clamp: M8 B+ [L-DFM]
 Number of Ribs: 6
 Pulleys: with multi-belt pulley
 Voltage [V]: 12

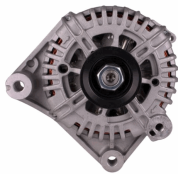
Electrics
AL-136JM
Alternator


FORD FIESTA V (JH_, JD_)
 FORD FUSION (JU_)
 MAZDA 2 (DY)

OE

1140135
 1464756
 1477856
 2S6T10300AA
 2S6T10300AB
 2S6T10300AC

Alternator Charge Current [A]: 80
 Belt Pulley [mm]: 54
 Clamp: M8 B+ [FR-SIG-A]
 Number of Ribs: 6
 Pulleys: with free-wheel belt pulley
 Voltage [V]: 14

AL-137JM
Alternator


BMW 1 (E87)
 BMW 3 (E90)
 BMW 3 Cabriolet (E93)
 BMW 3 Coupé (E92)
 BMW 3 Touring (E91)

OE

12317790548
 12317795620
 12317797519
 12317797520
 12317799180
 12317799181

Alternator Charge Current [A]: 150
 Belt Pulley [mm]: 54
 Clamp: M8 B+ [COM]
 Number of Ribs: 6
 Pulleys: with multi-belt pulley
 Voltage [V]: 14

AL-138JM
Alternator


FIAT DUCATO Autobus (244, Z_)
 FIAT DUCATO Autobus (250)
 FIAT DUCATO Furgonato (244)
 FIAT DUCATO Furgonato (250)
 FIAT DUCATO Pianale piatto/Telaio (244)
 FIAT DUCATO Pianale piatto/Telaio (250)

OE

1506770R
 2995390
 500059504
 504009977
 504009978
 5801377162

Alternator Charge Current [A]: 140
 Belt Pulley [mm]: 55
 Clamp: M8 B+ [L-DFM]
 Number of Ribs: 7
 Pulleys: with multi-belt pulley
 Voltage [V]: 14

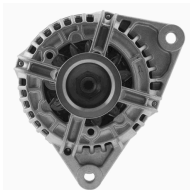
AL-139JM
Alternator


DACIA DOKKER
 DACIA DUSTER
 DACIA LODGY
 DACIA LOGAN (LS_)
 DACIA LOGAN II
 DACIA LOGAN MCV (KS_)

OE

1121540202
 1121542002
 2310000Q0M
 2310000Q2J
 2310000Q2JEX
 2310000QBH

Alternator Charge Current [A]: 150
 Belt Pulley [mm]: 55
 Clamp: M8 B+ [L-DFM]
 Number of Ribs: 6
 Pulleys: with free-wheel belt pulley
 Voltage [V]: 14

AL-140JM
Alternator


IVECO DAILY III Autobus
 IVECO DAILY III Cassone / Furgonato /
 Promiscuo
 IVECO DAILY III Pianale piatto/Telaio
 RENAULT MASCOTT Pianale piatto/Telaio (UH_,
 HH_)

OE

1524013R
 2995544
 2995548
 2995982
 2995984
 47129299

Alternator Charge Current [A]: 120
 Belt Pulley [mm]: 68
 Clamp: M8 B+ [L-DFM]
 Number of Ribs: 6
 Pulleys: with multi-belt pulley
 Voltage [V]: 14

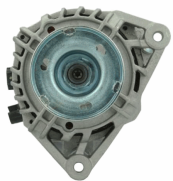
Electrics
AL-141JM
Alternator


FORD FIESTA V (JH_, JD_)
 FORD FUSION (JU_)

OE

1140135
 1303447
 1464756
 1464788
 1477856
 1477859

Alternator Charge Current [A]: 80
 Belt Pulley [mm]: 54
 Clamp: M8 B+ [FR-SIG-A]
 Number of Ribs: 6
 Pulleys: with multi-belt pulley
 Voltage [V]: 14

AL-142JM
Alternator


FORD FOCUS (DAW, DBW)
 FORD FOCUS Station wagon (DNW)
 FORD FOCUS Tre volumi (DFW)

OE

1079312
 1097306
 1126051
 1138231
 1144182
 1144183

Alternator Charge Current [A]: 90
 Belt Pulley [mm]: 78
 Clamp: M8 B+ [FR-SIG-A]
 Pulleys: Without multi-belt pulley
 Voltage [V]: 14

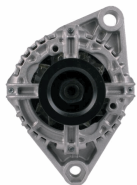
AL-143JM
Alternator


BMW 1 (E81)
 BMW 1 (E87)
 BMW 1 Cabriolet (E88)
 BMW 1 Coupé (E82)
 BMW 3 (E90)
 BMW 3 Cabriolet (E93)

OE

12317802261
 12317802619
 7802261
 7802619

Alternator Charge Current [A]: 180
 Belt Pulley [mm]: 53
 Clamp: M6 B+ [COM-BSS]
 Number of Ribs: 6
 Pulleys: with multi-belt pulley
 Voltage [V]: 14

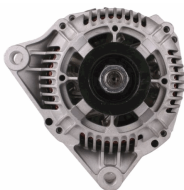
AL-144JM
Alternator


FIAT BRAVA (182)
 FIAT BRAVO I (182)
 FIAT DOBLO (119)
 FIAT MAREA (185)
 FIAT MAREA Weekend (185)
 FIAT MULTIPLA (186)

OE

46420963
 46532667
 46532668
 46532669
 468130061
 46813061

Alternator Charge Current [A]: 105
 Belt Pulley [mm]: 60
 Clamp: M8
 Number of Ribs: 5
 Pulleys: with multi-belt pulley
 Voltage [V]: 12

AL-145JM
Alternator


CITROEN BERLINGO (MF)
 CITROEN C5 I (DC_)
 CITROEN C5 I Break (DE_)
 CITROEN EVASION (22, U6)
 CITROEN XANTIA (X2)
 CITROEN XANTIA Break (X2)

OE

1516470R
 1516478R
 1516492R
 57052A
 57052B
 57052C

Alternator Charge Current [A]: 90
 Belt Pulley [mm]: 55
 Clamp: M8 B+, M5 D+ W
 Number of Ribs: 6
 Pulleys: with multi-belt pulley
 Voltage [V]: 14

Electrics

AL-146JM

Alternator



AUTOBIANCHI Y10
FIAT 126
FIAT 127
FIAT 127 Panorama
FIAT 147
FIAT CINQUECENTO (170)

OE

076903023G
43231721
4395131
4419109
4434084
4470266

Alternator Charge Current [A]: 65
Belt Pulley [mm]: 58
Clamp: M6
Number of Ribs: 5
Pulleys: with multi-belt pulley
Voltage [V]: 12

AL-147JM

Alternator



TOYOTA YARIS (SCP9_, NSP9_, KSP9_, NCP9_, ZSP9_)

OE

270600Q060
2706040040
2706040041

Alternator Charge Current [A]: 80
Belt Pulley [mm]: 80
Clamp: M6 B+ [RLO-DFM-IG-L]
Number of Ribs: 6
Pulleys: with multi-belt pulley
Voltage [V]: 14

AL-148JM

Alternator



MERCEDES-BENZ CLASSE C (W202)
MERCEDES-BENZ CLASSE C Station wagon (S202)
MERCEDES-BENZ CLASSE E (W210)
MERCEDES-BENZ CLASSE E Station wagon (S210)

OE

0101545902
010154590280
0101546302
0101549502
010154950280
0101549602

Alternator Charge Current [A]: 120
Belt Pulley [mm]: 50
Clamp: M8 B+ M5 D+
Number of Ribs: 6
Pulleys: with free-wheel belt pulley
Voltage [V]: 14

AL-149JM

Alternator



CITROEN JUMPER Autobus (230P)
CITROEN JUMPER Autobus (244, Z_)
CITROEN JUMPER Furgonato (230L)
CITROEN JUMPER Furgonato (244)
CITROEN JUMPER Pianale piatto/Telaio (230)
CITROEN JUMPER Pianale piatto/Telaio (244)

OE

12090113
500345767
500371244
504033459
5702A8
5702A9

Alternator Charge Current [A]: 150
Belt Pulley [mm]: 60
Clamp: M5 D+
Number of Ribs: 6
Pulleys: with multi-belt pulley
Voltage [V]: 12

AL-150JM

Alternator



AUDI 80 Avant (8C, B4)
AUDI 90 (89, 89Q, 8A, B3)
BAOLONG LINGHUI
BAOLONG LINGJUN
BAOLONG LINGQI
CHEVROLET CLASSIC

OE

038520135A
1516473R
1516529R
2997074
38520135A
4152610

Alternator Charge Current [A]: 35
Belt Pulley [mm]: 95
Clamp: M6
Number of Ribs: 1
Pulleys: Without multi-belt pulley
Voltage [V]: 24

Electrics

AL-151JM

Alternator



LAND ROVER DEFENDER Cabrio (LD)
LAND ROVER DEFENDER Station Wagon (LD)

OE

1372736
1374171
1404791
1474021
1572736
1581842

Alternator Charge Current [A]: 150
Belt Pulley [mm]: 59
Clamp: M8 B+ [L-DFM]
Number of Ribs: 6
Pulleys: with free-wheel belt pulley
Voltage [V]: 14

AL-152JM

Alternator



MERCEDES-BENZ CLASSE A (W168)
MERCEDES-BENZ Vaneo (414)

OE

6681540102
668154010280
6681540202
668154020280
6681540302
668154030280

Alternator Charge Current [A]: 150
Belt Pulley [mm]: 50
Clamp: M8 B+ [L-DFM]
Number of Ribs: 5
Pulleys: with multi-belt pulley
Voltage [V]: 12

AL-153JM

Alternator



ABARTH PUNTO EVO (199)
ALFA ROMEO MITO (955)
FIAT 500 (312)
FIAT 500 C (312)
FIAT 500L
FIAT BRAVO II (198)

OE

1202288
1202463
1535436
1673520
1705483
1719535

Alternator Charge Current [A]: 105
Belt Pulley [mm]: 54
Clamp: M8 B+, M5 D+
Number of Ribs: 4
Pulleys: with multi-belt pulley
Voltage [V]: 14

AL-154JM

Alternator



NISSAN PATHFINDER
NISSAN PRIMERA (P12)
NISSAN PRIMERA Hatchback (P12)
NISSAN PRIMERA Station wagon (WP12)
NISSAN TERRANO I (WD21)
RENAULT GRAND SCÉNIC II (JM0/1_)

OE

2303011252
2310000Q0F
2310000Q0L
2310000Q2F
2310000QAN
23100AW300

Alternator Charge Current [A]: 150
Belt Pulley [mm]: 49
Clamp: M8 B+ [L-DFM]
Number of Ribs: 7
Pulleys: with multi-belt pulley
Voltage [V]: 14

AL-155JM

Alternator



NISSAN TERRANO
RENAULT ESPACE IV (JK0/1_)
RENAULT LAGUNA Coupé (DT0/1)
RENAULT LAGUNA II (BG0/1_)
RENAULT LAGUNA II Grandtour (KG0/1_)
RENAULT LAGUNA III (BT0/1)

OE

1204193
2310000Q0J
231001202R
4431340
7711368437
8200404459

Alternator Charge Current [A]: 150
Belt Pulley [mm]: 49
Clamp: M8 B+ [L-DFM]
Number of Ribs: 7
Pulleys: with free-wheel belt pulley
Voltage [V]: 14

Electrics

AL-156JM

Alternator



FIAT BRAVA (182)
 PEUGEOT 307 Break (3E)
 RENAULT MEGANE I (BA0/1_)
 RENAULT MEGANE I Cabriolet (EA0/1_)
 RENAULT MEGANE I Classic (LA0/1_)
 RENAULT MEGANE I Coach (DA0/1_)

OE

12317519621
 12317519622
 1516403R
 4403214
 4403215
 4500044

Alternator Charge Current [A]: 110
 Belt Pulley [mm]: 55
 Clamp: M8 D+ W
 Number of Ribs: 6
 Pulleys: with multi-belt pulley
 Voltage [V]: 12

AL-157JM

Alternator



SMART CABRIO (450)
 SMART CITY-COUPE (450)
 SMART CROSSBLADE (450)
 SMART FORTWO Cabrio (450)
 SMART FORTWO Coupé (450)
 SMART ROADSTER (452)

OE

0002801V002
 0002801V003
 0002801V004
 0002801V005
 0002801V006
 0002801V007

Alternator Charge Current [A]: 75
 Belt Pulley [mm]: 58
 Clamp: M6 B+ M5 D+ M5 ,PHIN
 Number of Ribs: 4
 Pulleys: with multi-belt pulley
 Voltage [V]: 14

AL-158JM

Alternator



ALFA ROMEO GIULIETTA (940)
 FIAT 500L
 FIAT 500X
 FIAT TIPO (356)
 FIAT TIPO 2 volumi /Coda spiovente (356_)
 FIAT TIPO Station wagon (356_)

OE

17197917
 51884351
 51944891
 71796428

Alternator Charge Current [A]: 120
 Belt Pulley [mm]: 54
 Clamp: M8 B+ [LIN]
 Number of Ribs: 6
 Pulleys: with free-wheel belt pulley
 Voltage [V]: 14

AL-159JM

Alternator



FIAT SEDICI
 OPEL AGILA (B) (H08)
 SUZUKI ALTO (HA24)
 SUZUKI BALENO (EG)
 SUZUKI BALENO 2 volumi /Coda spiovente (EG)
 SUZUKI BALENO Station wagon (EG)

OE

3140055L00
 3140055L01
 3140055L02000
 3140059J00
 3140065D00
 3140065D01

Alternator Charge Current [A]: 70
 Belt Pulley [mm]: 55
 Clamp: M6 B+ [IG-L]
 Number of Ribs: 4
 Pulleys: with multi-belt pulley
 Voltage [V]: 12

AL-160JM

Alternator



FIAT DOBLO (119)
 FIAT PALIO (178BX)
 FIAT PALIO Weekend (178DX)
 FIAT PANDA (169)
 FIAT PUNTO (176)
 FIAT PUNTO (188)

OE

43420960
 46231693
 46407644
 46407647
 46419297
 46420960

Alternator Charge Current [A]: 75
 Belt Pulley [mm]: 60
 Clamp: M8
 Number of Ribs: 4
 Pulleys: with multi-belt pulley
 Voltage [V]: 12

Electrics

AL-161JM

Alternator



CHEVROLET CRUZE (J300)
CHEVROLET CRUZE 2 volumi /Coda spiovente (J305)
CHEVROLET CRUZE Station Wagon (J308)
CHEVROLET TRAX
OPEL ASTRA GTC J

OE

1202117
1202118
1202261
1202264
1202328
1202338

Alternator Charge Current [A]: 140
Belt Pulley [mm]: 60
Clamp: M8 B+ [DFM-RVC]
Number of Ribs: 6
Pulleys: with free-wheel belt pulley
Voltage [V]: 14

AL-162JM

Alternator



TOYOTA HILUX II Pick-up (RN6_, RN5_, LN6_, YN6_, YN5_, LN)
TOYOTA HILUX III Pick-up (TGN1_, GGN2_, GGN1_, KUN2_, KUN)
TOYOTA LAND CRUISER (KDJ12_, GRJ12_)
TOYOTA LAND CRUISER 150 (KDJ15_, GRJ15_)

OE

270600L010
270600L020
270600L021
270600L022
270600L02284
270600L030

Alternator Charge Current [A]: 100
Belt Pulley [mm]: 58
Clamp: M6 B+ [S-DFM-IG-L]
Number of Ribs: 7
Pulleys: with free-wheel belt pulley
Voltage [V]: 14

AL-163JM

Alternator



ALFA ROMEO 145 (930)
ALFA ROMEO 146 (930)
ALFA ROMEO 155 (167)
ALFA ROMEO 6 (119)
ALFA ROMEO 75 (162B)
ALFA ROMEO 90 (162)

OE

0005927867
110073
4423623
46231700
46231735
46231740

Alternator Charge Current [A]: 65
Belt Pulley [mm]: 62
Clamp: M6,D+
Number of Ribs: 5
Pulleys: with multi-belt pulley
Voltage [V]: 14

AL-164JM

Alternator



CHEVROLET CORSA Pick-up
CHEVROLET CORSA Station wagon
CHEVROLET CORSA Tre volumi
HONDA CIVIC VII Hatchback (EU, EP, EV)
OPEL ASTRA G 2 volumi /Coda spiovente (F48_, F08_)

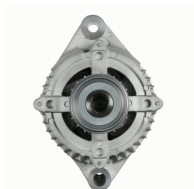
OE

1204157
1204158
136101
2506101
31100PLZD00
6204182

Alternator Charge Current [A]: 100
Alternator Type: incl. vacuum pump
Belt Pulley [mm]: 60
Clamp: M8 B+ [L-W]
Number of Ribs: 6
Pulleys: with multi-belt pulley
Voltage [V]: 14

AL-165JM

Alternator



ALFA ROMEO GIULIA (952_)
ALFA ROMEO GIULIETTA (940)
FIAT 500L
FIAT 500X
FIAT TIPO (356)
FIAT TIPO 2 volumi /Coda spiovente (356_)

OE

51907673
51929089
71796431
71796434

Alternator Charge Current [A]: 150
Belt Pulley [mm]: 54
Clamp: M8 B+ [LIN]
Number of Ribs: 6
Pulleys: with free-wheel belt pulley
Voltage [V]: 14

Electrics

AL-166JM

Alternator



MITSUBISHI CARISMA (DA_)
 MITSUBISHI CARISMA Tre volumi (DA_)
 MITSUBISHI SPACE STAR (DG_A)
 RENAULT AVANTIME (DE0_)
 RENAULT CLIO II (BB0/1/2_, CB0/1/2_)
 RENAULT LAGUNA I (B56_, 556_)

OE

1800A043
 2310000Q0A
 2310000Q0D
 2310000Q0E
 2310000Q0K
 2310000Q1F

Alternator Charge Current [A]: 120
 Belt Pulley [mm]: 49
 Clamp: M8 B+ [L-DFM]
 Number of Ribs: 6
 Pulleys: with free-wheel belt pulley
 Voltage [V]: 14

AL-167JM

Alternator



CHRYSLER 300 C (LX)
 CHRYSLER 300 C Touring (LX)
 JEEP COMMANDER (XK)
 JEEP GRAND CHEROKEE III (WH, WK)
 MERCEDES-BENZ CLASSE C (W203)
 MERCEDES-BENZ CLASSE C (W204)

OE

0009062700
 00090627000087
 000906270080
 000906270087
 04801250AA
 04801250AB

Alternator Charge Current [A]: 180
 Belt Pulley [mm]: 50
 Clamp: M8 B+ [LIN]
 Number of Ribs: 7
 Pulleys: with free-wheel belt pulley
 Voltage [V]: 12

AL-168JM

Alternator



ALFA ROMEO 145 (930)
 ALFA ROMEO 155 (167)
 FIAT BARCHETTA (183)
 FIAT BRAVA (182)
 FIAT BRAVO I (182)
 FIAT COUPE (FA/175)

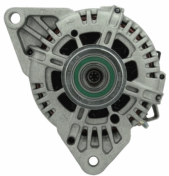
OE

0046430531
 1516426R
 46231670
 46231671
 46231722
 46231724

Alternator Charge Current [A]: 100
 Belt Pulley [mm]: 62
 Clamp: M8
 Number of Ribs: 6
 Pulleys: with multi-belt pulley
 Voltage [V]: 12

AL-169JM

Alternator



HYUNDAI ELANTRA Tre volumi (MD, UD)
 HYUNDAI i20
 HYUNDAI i20 (PB, PBT)
 HYUNDAI i30 (FD)
 HYUNDAI i30 (GD)
 HYUNDAI i30 Coupé

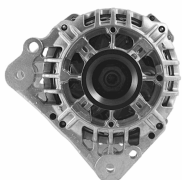
OE

3730002A651
 373002A400
 373002A401
 373002A450
 373002A600
 373002A601

Alternator Charge Current [A]: 130
 Belt Pulley [mm]: 57
 Clamp: M8 B+ [C-L-FR]
 Number of Ribs: 5
 Pulleys: with free-wheel belt pulley
 Voltage [V]: 14

AL-170JM

Alternator



AUDI A2 (8Z0)
 SEAT ALHAMBRA (7V8, 7V9)
 SEAT ALTEA (5P1)
 SEAT ALTEA XL (5P5, 5P8)
 SEAT AROSA (6H)
 SEAT CORDOBA (6K2)

OE

028903018RX
 028903026P
 0303903023N
 036903018B
 036903018BX
 036903024D

Alternator Charge Current [A]: 110
 Belt Pulley [mm]: 50
 Clamp: M8 B+ [L-DFM]
 Number of Ribs: 6
 Pulleys: with multi-belt pulley
 Voltage [V]: 12

Electrics
AL-171JM
Alternator


HYUNDAI ELANTRA (XD)
 HYUNDAI ELANTRA Tre volumi (XD)
 HYUNDAI GRANDEUR (TG)
 HYUNDAI i30 (FD)
 HYUNDAI i30 CW (FD)
 HYUNDAI SANTA FÉ I (SM)

OE
 2730027012
 3730027010
 3730027011
 3730027012
 3730027012AT
 3730027013

Alternator Charge Current [A]: 120
 Alternator Type: incl. vacuum pump
 Belt Pulley [mm]: 60
 Clamp: M8 B+ [L-S]
 Number of Ribs: 6
 Pulleys: with free-wheel belt pulley
 Voltage [V]: 14

AL-172JM
Alternator


FIAT 500 (312)
 FIAT 500 C (312)
 FIAT DOBLO (119)
 FIAT FIORINO MPV / Space wagon (225_)
 FIAT GRANDE PUNTO (199)
 FIAT IDEA

OE
 1204432
 13117278
 13256930
 13283343
 1539098
 1571296

Alternator Charge Current [A]: 90
 Belt Pulley [mm]: 54
 Clamp: M8 B+M5 D+
 Number of Ribs: 6
 Pulleys: with multi-belt pulley
 Voltage [V]: 14

AL-173JM
Alternator


MINI MINI (R50, R53)

OE
 12317790879
 2706033050
 2706033051
 7790879

Alternator Charge Current [A]: 100
 Belt Pulley [mm]: 60
 Clamp: M8 [C-FR-IG-L]
 Number of Ribs: 7
 Pulleys: with free-wheel belt pulley
 Voltage [V]: 12

AL-174JM
Alternator


ALFA ROMEO GT (937)
 CITROEN C5 I (DC_)
 CITROEN C5 I Break (DE_)
 CITROEN C8 (EA_, EB_)
 CITROEN XANTIA (X2)
 CITROEN XANTIA Break (X2)

OE
 130722
 3140068D00
 3140068D00000
 3140068D01
 3140068D02
 3140068D02000

Alternator Charge Current [A]: 150
 Belt Pulley [mm]: 54
 Clamp: M8 B+ M5 D+
 Number of Ribs: 6
 Pulleys: with free-wheel belt pulley
 Voltage [V]: 14

AL-175JM
Alternator


TOYOTA YARIS (SCP1_, NLP1_, NCP1_)
 TOYOTA YARIS VERSO (_NLP2_, _NCP2_)

OE
 2706033010
 2706033020
 2706033040

Alternator Charge Current [A]: 90
 Belt Pulley [mm]: 60
 Clamp: M6 [FR-IG-L]
 Number of Ribs: 5
 Pulleys: with free-wheel belt pulley
 Voltage [V]: 12

Electrics
AL-176JM
Alternator


FIAT CROMA (194)
 FIAT GRANDE PUNTO (199)
 FIAT STILO (192)
 FIAT STILO Multi Wagon (192)
 OPEL ASTRA H (L48)
 OPEL ASTRA H GTC (L08)

OE

1204433
 13117340
 6204187
 6204293
 71755143
 75814308

Alternator Charge Current [A]: 105
 Belt Pulley [mm]: 62
 Clamp: M8 B+ M5 D+
 Number of Ribs: 6
 Pulleys: with free-wheel belt pulley
 Voltage [V]: 14

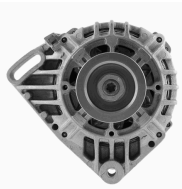
AL-177JM
Alternator


FORD TRANSIT Autobus (FD_ _ , FB_ _ , FS_ _ , FZ_ _ , FC_ _)
 FORD TRANSIT Furgonato (FA_ _)
 FORD TRANSIT Pianale piatto/Telaio (FM_ _ , FN_ _)

OE

1498518
 1516508R
 2C1T1 0300 BA
 2C1T1 0300 BB
 2C1T10300BA
 2C1T10300BB

Alternator Charge Current [A]: 110
 Belt Pulley [mm]: 59
 Clamp: M6 B+ [L-DFM-S]
 Number of Ribs: 7
 Pulleys: with free-wheel belt pulley
 Voltage [V]: 14

AL-178JM
Alternator


DACIA LOGAN (LS_)
 DACIA LOGAN II
 DACIA LOGAN MCV II
 DACIA SANDERO
 DACIA SANDERO II
 RENAULT CLIO II (BB0/1/2_ , CB0/1/2_)

OE

130712
 2310000G1H
 2310000GAT
 2310000Q1C
 2310000Q1D
 2310000Q1H

Alternator Charge Current [A]: 95
 Belt Pulley [mm]: 65
 Clamp: M8 B+[L]
 Number of Ribs: 3
 Pulleys: with multi-belt pulley
 Voltage [V]: 14

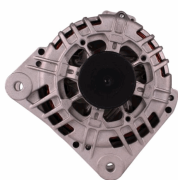
AL-179JM
Alternator


HYUNDAI GALLOPER I
 HYUNDAI GALLOPER II (JK-01)
 HYUNDAI TERRACAN (HP)
 MITSUBISHI GALLOPER (JK-01)

OE

3730042540
 3730042542
 3730042860
 3730042861
 3730042862
 3730042863

Alternator Charge Current [A]: 90
 Alternator Type: incl. vacuum pump
 Belt Pulley [mm]: 76
 Clamp: M6 B+ [L-S]
 Number of Ribs: 2
 Pulleys: Without multi-belt pulley
 Voltage [V]: 14

AL-180JM
Alternator


DACIA LOGAN (LS_)
 DACIA LOGAN MCV (KS_)
 DACIA LOGAN Pick-up (US_)
 DACIA SANDERO
 RENAULT CLIO IV
 RENAULT KANGOO (KC0/1_)

OE

1204189
 1204489
 2310000QAU
 2310000QBE
 2310000QBG
 2310000QOE

Alternator Charge Current [A]: 125
 Belt Pulley [mm]: 54
 Clamp: M8 B+[L]
 Number of Ribs: 5
 Pulleys: with free-wheel belt pulley
 Voltage [V]: 12

Electrics
AL-181JM
Alternator


TOYOTA YARIS (SCP1_, NLP1_, NCP1_)
 TOYOTA YARIS VERSO (_NLP2_, _NCP2_)

OE

270600J010
 270600J020
 270600J030
 270600J040
 2706023040
 270600J020

Alternator Charge Current [A]: 90
 Belt Pulley [mm]: 55
 Clamp: M6 [FR-IG-L]
 Number of Ribs: 6
 Pulleys: with multi-belt pulley
 Voltage [V]: 12

AL-182JM
Alternator


TOYOTA AVENSIS (T25_)
 TOYOTA AVENSIS Station wagon (T25)
 TOYOTA AVENSIS Tre volumi (T25)
 TOYOTA COROLLA (ZZE12_, NDE12_, ZDE12_)
 TOYOTA COROLLA (_E11_)
 TOYOTA COROLLA Compact (_E11_)

OE

2706027040
 270602704084
 2706027050
 2706027060
 2706027070
 2706027090

Alternator Charge Current [A]: 130
 Belt Pulley [mm]: 58
 Clamp: M6 B+ [S-DFM-IG-L]
 Number of Ribs: 5
 Pulleys: with free-wheel belt pulley
 Voltage [V]: 14

AL-183JM
Alternator


FORD MAVERICK (UDS, UNS)
 NISSAN TERRANO II (R20)

OE

1959007
 2310069T60
 231007F000
 231007F001

Alternator Charge Current [A]: 70
 Belt Pulley [mm]: 80
 Clamp: M8
 Number of Ribs: 1
 Pulleys: Without multi-belt pulley
 Voltage [V]: 12

AL-184JM
Alternator


DACIA LOGAN (LS_)
 DACIA LOGAN MCV (KS_)
 DACIA LOGAN Pick-up (US_)
 DACIA SANDERO
 RENAULT CLIO II (BB0/1/2_, CB0/1/2_)
 RENAULT ESPACE III (JE0_)

OE

2310000QBC
 27060165FL
 6001548061
 6601548061
 7700101274
 7700421477

Alternator Charge Current [A]: 98
 Belt Pulley [mm]: 55
 Clamp: M8 B+ [L-DFM]
 Number of Ribs: 6
 Pulleys: with multi-belt pulley
 Voltage [V]: 14

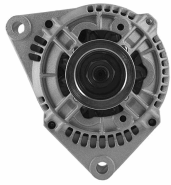
AL-185JM
Alternator


CITROEN AX (ZA-_)
 CITROEN SAXO (S0, S1)
 CITROEN XSARA (N1)
 CITROEN XSARA Break (N2)
 CITROEN ZX Break (N2)
 NISSAN MICRA II (K11)

OE

12312244818
 12312244819
 130555
 5701A5
 5701A6
 5701A6(X)

Alternator Charge Current [A]: 95
 Belt Pulley [mm]: 55
 Clamp: M8
 Number of Ribs: 5
 Pulleys: with multi-belt pulley
 Voltage [V]: 12

Electrics
AL-186JM
Alternator


DAEWOO KORANDO (KJ)
 DAEWOO KORANDO Cabrio (KJ)
 DAEWOO MUSSO (FJ)
 MERCEDES-BENZ 190 (W201)
 MERCEDES-BENZ CLASSE C (W202)
 MERCEDES-BENZ CLASSE C Station wagon

OE

0081545102
 0081545202
 008154520280
 0081549602
 008154960280
 0081549702

Alternator Charge Current [A]: 90
 Belt Pulley [mm]: 55
 Clamp: M8 B+ M5 D+
 Number of Ribs: 6
 Pulleys: with multi-belt pulley
 Voltage [V]: 14

AL-187JM
Alternator


AUDI A3 Cabriolet (8P7)
 AUDI A4 (8EC, B7)
 AUDI A4 Avant (8ED, B7)
 CHRYSLER SEBRING (JS)
 CHRYSLER SEBRING Cabriolet (JS)
 DODGE AVENGER

OE

021903026
 021903026A
 021903026B
 021903026G
 021903026GX
 021903026L

Alternator Charge Current [A]: 180
 Belt Pulley [mm]: 56
 Clamp: M8 B+ [L-DFM]
 Number of Ribs: 6
 Pulleys: with free-wheel belt pulley
 Voltage [V]: 14

AL-188JM
Alternator


FORD SCORPIO II (GFR, GGR)
 FORD SCORPIO II Station wagon (GMR, GGR)

OE

1406060
 1406068
 1406091
 1406105
 1516401R
 1668894

Alternator Charge Current [A]: 70
 Alternator Type: incl. vacuum pump
 Belt Pulley [mm]: 67
 Clamp: M6 B+, M5 D+ M5 W
 Number of Ribs: 4
 Pulleys: with multi-belt pulley
 Voltage [V]: 14

AL-189JM
Alternator


ALFA ROMEO GIULIETTA (940)
 FIAT 500L
 FIAT 500X
 FIAT TIPO (356)
 FIAT TIPO 2 volumi /Coda spiovente (356_)
 FIAT TIPO Station wagon (356_)

OE

52067418
 52083172
 55280473
 68348758AB
 71798219
 K68348758AB

Alternator Charge Current [A]: 180
 Belt Pulley [mm]: 54
 Clamp: M8 B+ [LIN]
 Number of Ribs: 6
 Pulleys: with free-wheel belt pulley
 Voltage [V]: 14

AL-190JM
Alternator


DACIA DUSTER
 DACIA LOGAN (LS_)
 DACIA LOGAN MCV (KS_)
 DACIA LOGAN Pick-up (US_)
 DACIA SANDERO
 NISSAN MICRA III (K12)

OE

2310000Q0G
 2310000Q2C
 2310000Q2R
 711368692
 7701478093
 7711368356

Alternator Charge Current [A]: 110
 Belt Pulley [mm]: 55
 Clamp: M8 B+ [L-DFM]
 Number of Ribs: 6
 Pulleys: with free-wheel belt pulley
 Voltage [V]: 14

Electrics
AL-191JM
Alternator


CHEVROLET CAPTIVA (C100, C140)
 CHEVROLET EPICA (KL1_)
 CHEVROLET LACETTI (J200)
 CHEVROLET LACETTI Station wagon (J200)
 CHEVROLET NUBIRA Station wagon
 CHEVROLET NUBIRA Tre volumi

OE

1202430
 1202485
 4805450
 4811550
 4817806
 95519920

Alternator Charge Current [A]: 120
 Belt Pulley [mm]: 56
 Clamp: M8 B+, F-L
 Number of Ribs: 6
 Pulleys: with free-wheel belt pulley
 Voltage [V]: 14

AL-192JM
Alternator


TOYOTA YARIS (SCP9_, NSP9_, KSP9_, NCP9_, ZSP9_)

OE

270600N011

Alternator Charge Current [A]: 90
 Belt Pulley [mm]: 62
 Clamp: M6 B+ [S-DFM-IG-L]
 Number of Ribs: 6
 Pulleys: with free-wheel belt pulley
 Voltage [V]: 14

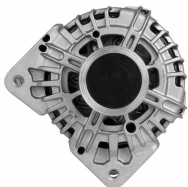
AL-193JM
Alternator


TOYOTA YARIS (SCP9_, NSP9_, KSP9_, NCP9_, ZSP9_)

OE

270600Q030
 270600Q040
 2706040010
 2706040020

Alternator Charge Current [A]: 90
 Belt Pulley [mm]: 57
 Clamp: M6 B+ [S-DFM-IG-L]
 Number of Ribs: 6
 Pulleys: with multi-belt pulley
 Voltage [V]: 14

AL-194JM
Alternator


NISSAN ALMERA II (N16)
 NISSAN ALMERA II Hatchback (N16)
 NISSAN MICRA III (K12)
 RENAULT CLIO II (BB0/1/2_, CB0/1/2_)
 RENAULT GRAND SCÉNIC II (JM0/1_)
 RENAULT KANGOO (KC0/1_)

OE

2310000QAB
 2310000QBB
 2310000QBJ
 2310000QBK
 231006313R
 23100BN701

Alternator Charge Current [A]: 150
 Belt Pulley [mm]: 54
 Clamp: M8 B+ [L-DFM]
 Number of Ribs: 5
 Pulleys: with free-wheel belt pulley
 Voltage [V]: 14

AL-195JM
Alternator


TOYOTA YARIS (NHP13_, NSP13_, NCP13_, KSP13_, NLP13_)

OE

270600Q140
 2706040090

Alternator Charge Current [A]: 90
 Belt Pulley [mm]: 60
 Clamp: M6 B+ [LIN]
 Number of Ribs: 6
 Pulleys: with multi-belt pulley
 Voltage [V]: 14

Electrics

AL-196JM

Alternator



TOYOTA BELTA
TOYOTA VIOS/YARIS Tre volumi (ZSP9_, NCP9_)
TOYOTA YARIS (SCP9_, NSP9_, KSP9_, NCP9_, ZSP9_)

OE

270600J051
270600J061
270600J070

Alternator Charge Current [A]: 90
Belt Pulley [mm]: 55
Clamp: M6 B+ [S-DFM-IG-L]
Number of Ribs: 6
Pulleys: with multi-belt pulley
Voltage [V]: 14

AL-197JM

Alternator



AUDI A4 (8D2, B5)
AUDI A4 (8E2, B6)
AUDI A4 Avant (8D5, B5)
AUDI A4 Avant (8E5, B6)
AUDI A6 (4B2, C5)
AUDI A6 Avant (4B5, C5)

OE

028903018K
028903029B
028903029BX
028903029C
028903029E
028903029EX

Alternator Charge Current [A]: 140
Belt Pulley [mm]: 56
Clamp: M8 B+ [L-DFM]
Number of Ribs: 5
Pulleys: with free-wheel belt pulley
Voltage [V]: 12

AL-198JM

Alternator



OPEL ASTRA G 2 volumi /Coda spiovente (F48_, F08_)
OPEL ASTRA G Cabriolet (F67)
OPEL ASTRA G Coupe (F07_)
OPEL ASTRA G Station wagon (F35_)
OPEL ASTRA G Tre volumi (F69_)

OE

074903025J
09133601
10457917
1204134
1204160
13108596

Alternator Charge Current [A]: 140
Belt Pulley [mm]: 50
Clamp: M8 B+ M5 D+
Number of Ribs: 6
Pulleys: with multi-belt pulley
Voltage [V]: 14

AL-199JM

Alternator



TOYOTA AURIS (NRE15_, ZZE15_, ADE15_, ZRE15_, NDE15_)
TOYOTA COROLLA Tre volumi (E15_)
TOYOTA URBAN CRUISER (NSP1_, NLP1_, ZSP1_, NCP11_)
TOYOTA YARIS (SCP9_, NSP9_, KSP9_, NCP9_)

OE

270600N040
270600N050
2706033100

Alternator Charge Current [A]: 100
Belt Pulley [mm]: 58
Clamp: M6 B+ [RLO-DFM-IG-L]
Number of Ribs: 6
Pulleys: with free-wheel belt pulley
Voltage [V]: 14

AL-200JM

Alternator



OPEL ASTRA H (L48)
OPEL ASTRA H GTC (L08)
OPEL ASTRA H Station wagon (L35)
OPEL ASTRA H TwinTop (L67)
OPEL SIGNUM
OPEL VECTRA C

OE

1202115
1202116
1204422
1204427
13229990
13229991

Alternator Charge Current [A]: 140
Belt Pulley [mm]: 54
Clamp: M8 B+ [DFM-L]
Number of Ribs: 6
Pulleys: with free-wheel belt pulley
Voltage [V]: 14

Electrics

AL-201JM

Alternator



FORD B-MAX (JK)
 FORD C-MAX II
 FORD ECOSPORT
 FORD FIESTA Tre volumi
 FORD FIESTA VI
 FORD FOCUS III

OE

1469714
 1685794
 1698214
 1871861
 1928875
 2119650

Alternator Charge Current [A]: 120
 Belt Pulley [mm]: 49
 Clamp: M8 B+ [LIN]
 Number of Ribs: 6
 Pulleys: with multi-belt pulley
 Voltage [V]: 14

AL-202JM

Alternator



CITROEN BERLINGO (MF)
 CITROEN C5 I (DC_)
 CITROEN C5 I Break (DE_)
 CITROEN C8 (EA_, EB_)
 CITROEN EVASION (22, U6)
 CITROEN XANTIA (X2)

OE

06C903016B
 06C903016BX
 078903016S
 1516481R
 570520
 57052D

Alternator Charge Current [A]: 150
 Belt Pulley [mm]: 54
 Clamp: M8 B+ M5 D+
 Number of Ribs: 6
 Pulleys: with multi-belt pulley
 Voltage [V]: 14

AL-203JM

Alternator



FORD FIESTA V (JH_, JD_)
 FORD FUSION (JU_)
 MAZDA 2 (DY)

OE

1140136
 1485762
 1519795
 1760757
 2S6T10300BA
 2S6T10300BB

Alternator Charge Current [A]: 150
 Belt Pulley [mm]: 54
 Clamp: M8 B+ [FR-SIG-A]
 Number of Ribs: 6
 Pulleys: with free-wheel belt pulley
 Voltage [V]: 14

AL-204JM

Alternator



FORD C-MAX (DM2)
 FORD FIESTA V (JH_, JD_)
 FORD FOCUS (DAW, DBW)
 FORD FOCUS C-MAX
 FORD FOCUS II (DA_)
 FORD FOCUS II Cabriolet

OE

1064383
 1070806
 1073090
 1090084
 1090085
 1097305

Alternator Charge Current [A]: 105
 Belt Pulley [mm]: 48
 Clamp: M8 B+ [FR-SIG-A]
 Number of Ribs: 6
 Pulleys: with multi-belt pulley
 Voltage [V]: 14

AL-205JM

Alternator



CITROEN BERLINGO (MF)
 CITROEN EVASION (22, U6)
 CITROEN XANTIA (X1)
 CITROEN XANTIA Break (X1)
 CITROEN XM (Y4)
 CITROEN XM Break (Y4)

OE

1516404R
 1516411R
 1516417R
 3140065G00
 3140065G00000
 3292554

Alternator Charge Current [A]: 120
 Belt Pulley [mm]: 61
 Clamp: M8
 Number of Ribs: 6
 Pulleys: with multi-belt pulley
 Voltage [V]: 12

Electrics
AL-206JM
Alternator


CITROEN BERLINGO (B9)
 CITROEN C3 II
 CITROEN C3 Picasso
 CITROEN C4 Coupé (LA_)
 CITROEN C4 Grand Picasso I (UA_)
 CITROEN C4 Grand Picasso II

OE

12317535098
 12317553009
 12317562388
 12317574365
 12317575650
 12317575779

Alternator Charge Current [A]: 150
 Belt Pulley [mm]: 49
 Clamp: M6 B+ [BSS]
 Number of Ribs: 6
 Pulleys: with free-wheel belt pulley
 Voltage [V]: 14

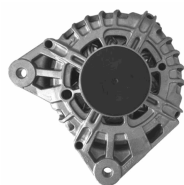
AL-207JM
Alternator


OPEL ASTRA G 2 volumi /Coda spiovente (F48_, F08_)
 OPEL ASTRA G Cabriolet (F67)
 OPEL ASTRA G CLASSIC (T98)
 OPEL ASTRA G CLASSIC Caravan (F35)
 OPEL ASTRA G CLASSIC Tre volumi (T98)

OE

1204108
 1204121
 13125229
 13147093
 13156050
 13156054

Alternator Charge Current [A]: 120
 Belt Pulley [mm]: 54
 Clamp: M8
 Number of Ribs: 5
 Pulleys: with multi-belt pulley
 Voltage [V]: 12

AL-208JM
Alternator


DACIA DOKKER
 DACIA DUSTER
 DACIA LODGY
 DACIA LOGAN II
 DACIA LOGAN MCV II
 DACIA SANDERO II

OE

2310007865A
 2310007865R
 231001318R
 231003424R
 231007865R
 231007865RA

Alternator Charge Current [A]: 120
 Belt Pulley [mm]: 55
 Clamp: M8 B+ [LIN]
 Number of Ribs: 6
 Pulleys: with free-wheel belt pulley
 Voltage [V]: 14

AL-209JM
Alternator


FORD C-MAX (DM2)
 FORD FOCUS C-MAX
 FORD FOCUS II (DA_)
 FORD FOCUS II Station wagon (DA_)
 FORD FOCUS II Tre volumi (DA_)

OE

1302007
 132974
 1352425
 1352431
 1477740
 1677167

Alternator Charge Current [A]: 150
 Belt Pulley [mm]: 78
 Clamp: M8 B+ [FR-SIG-A]
 Pulleys: Without multi-belt pulley
 Voltage [V]: 14

AL-210JM
Alternator


CITROEN BERLINGO (B9)
 CITROEN C-CROSSER (EP_)
 CITROEN C4 Coupé (LA_)
 CITROEN C4 Grand Picasso I (UA_)
 CITROEN C4 I (LC_)
 CITROEN C4 Picasso I (UD_)

OE

1800A138
 565475280N80
 570200
 5702000
 5702E2
 5702E3

Alternator Charge Current [A]: 180
 Belt Pulley [mm]: 54
 Clamp: M8 B+ [L-DFM]
 Number of Ribs: 6
 Pulleys: with free-wheel belt pulley
 Voltage [V]: 14

Electrics
AL-211JM
Alternator


FIAT BRAVA (182)
 FIAT BRAVO I (182)
 FIAT PALIO (178BX)
 FIAT PALIO Weekend (178DX)
 FIAT PUNTO (176)
 FIAT SIENA (178_)

OE

46000357
 46231699
 46407645
 46420961
 46420964
 46420965

Alternator Charge Current [A]: 85
 Belt Pulley [mm]: 60
 Clamp: M8
 Number of Ribs: 6
 Pulleys: with multi-belt pulley
 Voltage [V]: 12

AL-212JM
Alternator


MERCEDES-BENZ CLASSE C (W204)
 MERCEDES-BENZ CLASSE C Coupé (C204)
 MERCEDES-BENZ CLASSE C T-Model (S204)
 MERCEDES-BENZ CLASSE E (W212)
 MERCEDES-BENZ CLASSE E Cabriolet (A207)
 MERCEDES-BENZ CLASSE E Coupé (C207)

OE

0009063622
 0009068802
 000906880280
 0131546802
 01315468020
 01315468020080

Alternator Charge Current [A]: 180
 Belt Pulley [mm]: 50
 Clamp: M8 B+ [LIN]
 Number of Ribs: 6
 Pulleys: with free-wheel belt pulley
 Voltage [V]: 14

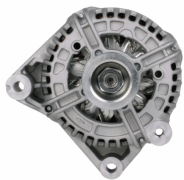
AL-213JM
Alternator


OPEL ASTRA GTC J
 OPEL ASTRA J
 OPEL ASTRA J Sports Tourer
 OPEL INSIGNIA
 OPEL INSIGNIA A Country Tourer (G09)
 OPEL INSIGNIA Station wagon

OE

1202236
 1202423
 1204643
 95519835

Alternator Charge Current [A]: 100
 Belt Pulley [mm]: 54
 Clamp: M8 B+ [F-L]
 Number of Ribs: 6
 Pulleys: with free-wheel belt pulley
 Voltage [V]: 14

AL-214JM
Alternator


BMW 3 (E90)
 BMW 3 Cabriolet (E93)
 BMW 3 Coupé (E92)
 BMW 3 Touring (E91)
 BMW 5 (E60)
 BMW 5 Touring (E61)

OE

12317788821
 12317789981
 12317789984
 12317792072
 12317797521
 12317797522

Alternator Charge Current [A]: 170
 Belt Pulley [mm]: 53
 Clamp: M6 B+ [COM-BSS]
 Number of Ribs: 6
 Pulleys: with multi-belt pulley
 Voltage [V]: 14

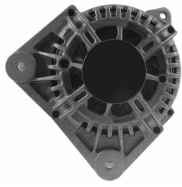
AL-215JM
Alternator


CHEVROLET MATIZ (M200, M250)
 DAEWOO MATIZ

OE

AB165104

Alternator Charge Current [A]: 65
 Belt Pulley [mm]: 64
 Clamp: M6 B [IG-L]
 Number of Ribs: 3
 Pulleys: with multi-belt pulley
 Voltage [V]: 14

Electrics
AL-216JM
Alternator


PEUGEOT 308 (4A_, 4C_)
 RENAULT GRAND SCÉNIC II (JM0/1_)
 RENAULT KANGOO (KC0/1_)
 RENAULT KANGOO / GRAND KANGOO (KW0/1_)
 RENAULT KANGOO BE BOP (KW0/1_)
 RENAULT MEGANE II (BM0/1_, CM0/1_)

OE

231008578R
 7701475896
 7701476812
 7711368380
 7711368719
 8200390675

Alternator Charge Current [A]: 100
 Belt Pulley [mm]: 55
 Clamp: M6 B+ [BSS]
 Number of Ribs: 6
 Pulleys: with free-wheel belt pulley
 Voltage [V]: 14

AL-217JM
Alternator


AUDI A6 (4F2, C6)
 AUDI A6 Allroad (4FH, C6)
 AUDI A6 Avant (4F5, C6)
 AUDI A8 (4E_)
 AUDI Q7 (4L)
 VW TOUAREG (7LA, 7L6, 7L7)

OE

059903015R
 059903015RX
 059903017K
 059903017KX
 06C903016H
 06C903016HX

Alternator Charge Current [A]: 180
 Belt Pulley [mm]: 57
 Clamp: M6 B+ [COM-BSS]
 Number of Ribs: 6
 Pulleys: with multi-belt pulley
 Voltage [V]: 14

AL-218JM
Alternator


SMART CABRIO (450)
 SMART CITY-COUPE (450)
 SMART FORTWO Cabrio (450)
 SMART FORTWO Coupé (450)

OE

0004717V005
 0004717V005000000
 0004717V006
 0111548002
 011154800280
 4717V00500

Alternator Charge Current [A]: 85
 Belt Pulley [mm]: 53
 Clamp: M8 B+ [L-DFM]
 Number of Ribs: 5
 Pulleys: with multi-belt pulley
 Voltage [V]: 14

AL-219JM
Alternator


AUDI A1 (8X1, 8XF)
 AUDI A1 Sportback (8XA, 8XK)
 AUDI A3 (8P1)
 AUDI A3 Cabriolet (8P7)
 AUDI A3 Sportback (8PA)
 AUDI Q3 (8U)

OE

03L903023
 03L903023A
 03L903023AX
 03L903023X
 03L903024
 03L903024M

Alternator Charge Current [A]: 140
 Belt Pulley [mm]: 56
 Clamp: M8 B+ [LIN]
 Number of Ribs: 6
 Pulleys: with free-wheel belt pulley
 Voltage [V]: 14

AL-220JM
Alternator


SUZUKI JIMNY (FJ)

OE

3140084A10
 3140084A10000
 3140084A11
 3140084A11000
 3140084A12
 3140084A12000

Alternator Charge Current [A]: 100
 Alternator Type: incl. vacuum pump
 Belt Pulley [mm]: 54
 Clamp: M8 B+ [L-R]
 Number of Ribs: 6
 Pulleys: with free-wheel belt pulley
 Voltage [V]: 14

Electrics
AL-221JM
Alternator


HYUNDAI ACCENT III (MC)
 HYUNDAI ACCENT III Tre volumi (MC)
 HYUNDAI ACCENT IV Tre volumi (RB)
 HYUNDAI GETZ (TB)
 HYUNDAI i10 (PA)
 HYUNDAI i20

OE

373002A000
 373002A010
 373002A011
 373002A050
 373002A100
 373002A110

Alternator Charge Current [A]: 120
 Belt Pulley [mm]: 57
 Clamp: M8 B+ [L]
 Number of Ribs: 5
 Pulleys: with free-wheel belt pulley
 Voltage [V]: 14

AL-222JM
Alternator


LIGIER JS RC
 MICROCAR DUè
 MICROCAR F8
 MICROCAR M.GO
 MICROCAR MC
 MICROCAR MC1 / MC CITY

OE

0011573260-S
 1157326
 1157397
 1758064010
 721001001
 JFZ155A

Alternator Charge Current [A]: 40
 Belt Pulley [mm]: 63
 Clamp: M6 [IG-L]
 Number of Ribs: 1
 Pulleys: Without multi-belt pulley
 Voltage [V]: 12

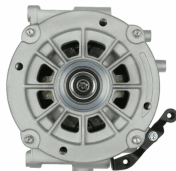
AL-223JM
Alternator


OPEL ASTRA CLASSIC (L48)
 OPEL ASTRA CLASSIC Station wagon
 OPEL ASTRA CLASSIC Tre volumi
 OPEL ASTRA H (L48)
 OPEL ASTRA H GTC (L08)
 OPEL ASTRA H Station wagon (L35)

OE

1202424
 1204197
 1204424
 1204425
 1207197
 6204274

Alternator Charge Current [A]: 140
 Belt Pulley [mm]: 60
 Clamp: M8 B+ [F-L]
 Number of Ribs: 6
 Pulleys: with free-wheel belt pulley
 Voltage [V]: 14

AL-224JM
Alternator


MERCEDES-BENZ CLASSE C (W203)
 MERCEDES-BENZ CLASSE C Coupe (CL203)
 MERCEDES-BENZ CLASSE C T-Model (S203)
 MERCEDES-BENZ CLASSE E (W210)
 MERCEDES-BENZ CLASSE E Station wagon (S210)

OE

00011501750
 00011502550
 0001501750
 0001502450
 0001502550
 A00011502550

Alternator Charge Current [A]: 190
 Belt Pulley [mm]: 50
 Clamp: M8 B+ [L-DFM]
 Number of Ribs: 6
 Pulleys: with free-wheel belt pulley
 Voltage [V]: 12

AL-225JM
Alternator


FORD FOCUS (DAW, DBW)
 FORD FOCUS Station wagon (DNW)
 FORD FOCUS Tre volumi (DFW)
 FORD TOURNEO CONNECT

OE

1229421
 1376671
 1376672
 1376695
 1429688
 1429689

Alternator Charge Current [A]: 120
 Belt Pulley [mm]: 78,5
 Clamp: M6 + [S-SIG-FR]
 Pulleys: Without multi-belt pulley
 Voltage [V]: 14

Electrics

AL-226JM

Alternator



MERCEDES-BENZ CLASSE A (W168)
MERCEDES-BENZ Vaneo (414)

OE

0101543802
010154380280
0111543502
011154350280
0111545602
011154560280

Alternator Charge Current [A]: 90
Belt Pulley [mm]: 51
Clamp: M8 B+M5 D+
Number of Ribs: 5
Pulleys: with multi-belt pulley
Voltage [V]: 14