



Quality Tested[®]
Automotive Spare Parts

NEWS 04/2026



www.qualitytested.com

CATALOGUE
FOR CARS AND
COMMERCIAL VEHICLES

CATALOGO
PER AUTOVETTURE E
VEICOLI COMMERCIALI

Brake system
BC188JM
Cable, parking brake


NISSAN CABSTAR Pick-up

OE
 36531F3900

 Fitting Position: Left Rear
 Length [mm]: 2032

BC189JM
Cable, parking brake


NISSAN CABSTAR Pick-up

OE
 36530F3900

 Fitting Position: Right Rear
 Length [mm]: 1160

BC191JM
Cable, parking brake


NISSAN CABSTAR Pick-up

OE
 364529X502
 364529X50A

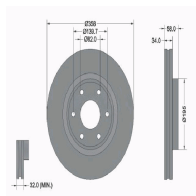
 Fitting Position: Left
 Fitting Position: Right
 Length [mm]: 1165
 Section: Rear Section

DI0185JM
Brake Disc


FORD ECOSPORT

OE
 2 147 409
 2147409
 GN15-1125-CA
 GN151125CA

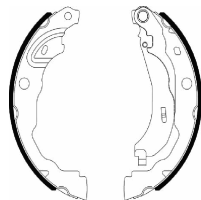
 Brake Disc Thickness [mm]: 25
 Brake Disc Type: Internally Vented
 Centering Diameter [mm]: 64
 Fitting Position: Front Axle
 Minimum Thickness [mm]: 23
 Number of Bores: 4
 Outer Diameter [mm]: 300
 Pitch Circle [mm]: 108
 Surface: Painted
 Thickness [mm]: 40

DI0186JM
Brake Disc


NISSAN PATROL III (Y62)

OE
 40206-1LB0A
 40206-1LB1A
 402061LB0A
 402061LB1A

 Brake Disc Thickness [mm]: 34
 Brake Disc Type: Internally Vented
 Centering Diameter [mm]: 82
 Fitting Position: Front Axle
 Height [mm]: 58
 Minimum Thickness [mm]: 32
 Number of Bores: 6
 Outer Diameter [mm]: 358
 Pitch Circle [mm]: 139,7
 Surface: Painted

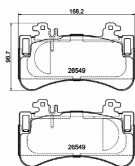
Brake system
GF532JM
Brake Shoe Set


DACIA JOGGER
 MERCEDES-BENZ CITAN Cassone/Limousine
 spaziosa (W420)
 MERCEDES-BENZ CITAN Tourer (W420)
 MERCEDES-BENZ T-CLASS MPV / Space wagon
 (W420)

OE

44 06 034 57R
 44060-00Q3D
 A4204232400

Fitting Position: Rear
 Outer Diameter 1 [mm]: 230
 Thickness [mm]: 5
 Width [mm]: 42

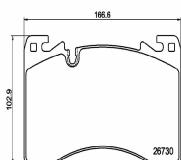
PA0582JM
Brake Pad Set, disc brake


MERCEDES-BENZ EQE
 MERCEDES-BENZ EQE SUV (X294)
 MERCEDES-BENZ EQS (V297)

OE

0004200706
 0004206003
 0004206103
 0004212702
 A0004200706
 A0004206003

Brake System: Brembo
 Fitting Position: Front Axle
 Height [mm]: 96,7
 Thickness [mm]: 15,3
 Wear Warning Contact: Prepared for wear
 indicator
 Width [mm]: 168,2
 WVA Number: 26549

PAL25JM
Brake Pad Set, disc brake


LAND ROVER RANGE ROVER SPORT III (L461)
 LAND ROVER RANGE ROVER V (L460)

OE

LR157388

Brake System: Brembo
 Fitting Position: Front Axle
 Height [mm]: 102,9
 Thickness [mm]: 17,3
 Wear Warning Contact: Prepared for wear
 indicator
 Width [mm]: 166,6
 WVA Number: 26730

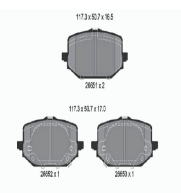
PP0042JM
Brake Pad Set, disc brake


ASTON MARTIN DB9 Cabriolet
 ASTON MARTIN DB9 Coupe
 ASTON MARTIN DBS Coupé
 ASTON MARTIN DBS Volante
 ASTON MARTIN RAPIDE
 ASTON MARTIN V12 Coupé

OE

100346000B
 100346000D
 100346000E
 420698451A
 420698451D
 43221T6NA52

Brake System: Brembo
 Height [mm]: 53,5
 Thickness [mm]: 9
 Wear Warning Contact: Excl. wear warning
 contact
 Width [mm]: 55,6
 WVA Number: 20610

PP2008JM
Brake Pad Set, disc brake


HONDA CR-V VI (RS_)

OE

430223E7G01
 430223E7H01

Fitting Position: Rear Axle
 Height [mm]: 50,7
 Thickness/Strength 1 [mm]: 16,5
 Thickness/Strength 2 [mm]: 17
 Wear Warning Contact: With acoustic wear
 warning
 Width [mm]: 117,3
 WVA Number: 26651
 WVA Number: 26652
 WVA Number: 26653

Brake system

TA821JM
Brake Drum

 SUZUKI VITARA (ET, TA)
 SUZUKI VITARA Cabrio (ET, TA)

OE
 4351156B00

 Centering Diameter [mm]: 50
 Fitting Position: Rear Axle
 Inner Br. Drum Diam. [mm]: 254
 Inner Brake Drum Height [mm]: 53,5
 Inner Diameter [mm]: 50
 Number of Holes: 5
 Outer Diameter [mm]: 296
 Total Br. Drum Height [mm]: 67

Clutch

BCV02147JM
Cable, manual transmission

 IVECO DAILY III Cassone / Furgonato /
 Promiscuo
 IVECO DAILY III Pianale piatto/Telaio
 IVECO DAILY IV Cassone / Furgonato /
 Promiscuo
 IVECO DAILY V Cassone / Furgonato /

OE
 500317684
 504034853

Length 1/ Length 2 [mm]: 765/495

KF5024JM
Clutch Kit


MITSUBISHI PAJERO II (V3_W, V2_W, V4_W)

OE

 Centering Diameter [mm]: 26,1
 Diameter [mm]: 250
 Number of Parts [parts]: 3
 Number of Teeth: 23
 Specification: DISCO SENZA MOLLE/DI

Cooling System

PQ0122JM
Water Pump

 FIAT REGATA (138)
 FIAT REGATA Weekend
 FIAT RITMO Cabriolet
 FIAT RITMO I (138A)
 FIAT RITMO II (138A)

OE
 5924366
 5990701
 7633560
 7671810

 Operating Mode: Mechanical
 Supplementary Article/Supplementary Info 2:
 Without cover
 Supplementary Article/Supplementary Info:
 with seal
 Water Pump Type: For v-ribbed belt use

PQ0234JM
Water Pump

 FIAT 127
 FIAT 127 Panorama
 FIAT 147
 FIAT DUNA (146 B)
 FIAT DUNA Weekend (146 B)
 FIAT FIORINO (127)

OE
 4336009
 5882691
 5890406
 71719668
 71737960

 Operating Mode: Mechanical
 Supplementary Article/Supplementary Info:
 with seal
 Water Pump Type: For v-ribbed belt use

Cooling System

PQ0241JM

Water Pump



FIAT REGATA (138)
FIAT REGATA Weekend
FIAT RITMO Cabriolet
FIAT RITMO I (138A)
FIAT RITMO II (138A)

OE
5924366
5990701
7633560
7671810

Operating Mode: Mechanical
Supplementary Article/Supplementary Info 2:
Without cover
Supplementary Article/Supplementary Info:
with seal
Water Pump Type: For v-ribbed belt use

VTQ0028F

Coolant Flange



FORD ESCORT '95 Furgonato (AVL)
FORD ESCORT VII (GAL, AAL, ABL)
FORD ESCORT VII Station wagon (GAL, ANL)
FORD ESCORT VII Tre volumi (GAL, AFL)
FORD FIESTA Furgonato (J5_, J3_)
FORD FIESTA IV (JA_, JB_)

OE
1093991
7064920
924F9K457AB
924F9K457AC
924F9K457AD

Supplementary Article/Supplementary Info:
with seal

VTQ0235

Thermostat, coolant



FIAT DOBLO (119)
FIAT DOBLO Cargo (223)
FIAT PALIO Weekend (178DX)
FIAT PUNTO (188)
FIAT PUNTO Van (188AX)
FIAT STRADA Pick-up (178E)

OE
46785392

Opening Temperature [°C]: 88
Supplementary Article/Supplementary Info:
With gaskets/seals

VTQ0240

Thermostat, coolant



FIAT BRAVA (182)
FIAT BRAVO I (182)
FIAT MAREA (185)
FIAT MAREA Weekend (185)

OE
0007791178
7791178

Housing Type: Metal Housing
Opening Temperature [°C]: 88
Supplementary Article/Supplementary Info:
with seal

VTQ0241

Thermostat, coolant



ALFA ROMEO 145 (930)
ALFA ROMEO 146 (930)
ALFA ROMEO 155 (167)

OE
0060614140
46550153
60614140

Housing Type: Metal Housing
Opening Temperature [°C]: 83
Supplementary Article/Supplementary Info:
with seal

Cooling System

VTQ0321
Termostat, coolant


VOLVO C30
VOLVO C70 II Cabriolet
VOLVO S40 II (MS)
VOLVO S60 I
VOLVO S80 I (TS, XY)
VOLVO S80 II (AS)

OE

30637216
30637217
30637243
30650022
30650023
30650469

Opening Temperature [°C]: 91

VTQ0340
Termostat, coolant


CITROEN JUMPER Autobus
CITROEN JUMPER Furgonato
CITROEN JUMPER Pianale piatto/Telaio
FORD TRANSIT Furgonato
FORD TRANSIT Pianale piatto/Telaio
PEUGEOT BOXER Autobus

OE

1 731 770
96 787 413 80
9678741380
BK2Q8A586AB

Fits thermostat with opening temperature [°C]: 88

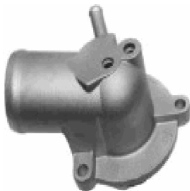
VTQ0343
Termostat, coolant


FORD TOURNEO CUSTOM Autobus
FORD TRANSIT Autobus
FORD TRANSIT CUSTOM Autobus
FORD TRANSIT CUSTOM Furgonato
FORD TRANSIT Furgonato
FORD TRANSIT Pianale piatto/Telaio

OE

2383556
KK2Q9K478CA

 Housing Type: with housing
Opening Temperature [°C]: 88

VTQ0522
Termostat, coolant


DAEWOO MUSSO (FJ)
MERCEDES-BENZ CLASSE C (W202)
MERCEDES-BENZ CLASSE C Station wagon (S202)
MERCEDES-BENZ CLASSE E (W124)
MERCEDES-BENZ CLASSE E (W210)

OE

00A121113
1112000415
1112000815
1112000915
1112001215
1112001815

 Housing Type: Metal Housing
Opening Temperature [°C]: 87
Supplementary Article/Supplementary Info: with seal

VTQ0524
Termostat, coolant


MERCEDES-BENZ CLASSE A (W169)
MERCEDES-BENZ CLASSE B (W245)

OE

6402000415
6402000515
6462000415
A6402000415
A6402000515
A6462000415

Opening Temperature [°C]: 80

Cooling System

VTQ0616
Thermostat, coolant


DAEWOO TICO (KLY3)
 FORD GRANADA (GU)
 JEEP CHEROKEE (XJ)
 MERCEDES-BENZ 100 Autobus (631)
 MERCEDES-BENZ 100 Furgonato (631)
 MERCEDES-BENZ 100 Pianale piatto/Telaio

OE
 12039075
 133734
 22033775
 22034675
 22037275
 22037676

Number of seals: 1
 Opening Temperature [°C]: 79
 Supplementary Article/Supplementary Info:
 With gaskets/seals

VTQ0630
Thermostat, coolant


CITROEN C4 Grand Picasso II
 CITROEN C4 Picasso II
 CITROEN C4 PICASSO II Van (DD_)
 CITROEN C5 III (RD_)
 CITROEN C5 III Break (TD_)
 PEUGEOT 308 II

OE
 1336CP
 9808647280

Opening Temperature [°C]: 102
 Operating Mode: Electrically Controlled
 Supplementary Article/Supplementary Info:
 with seal

VTQ0631
Thermostat, coolant


CITROEN C3 AIRCROSS II
 CITROEN C3 II
 CITROEN C3 III (SX)
 OPEL CORSA F
 OPEL CROSSLAND X
 PEUGEOT 2008

OE
 3553595
 9811034680

Opening Temperature [°C]: 103

VTQ0634
Thermostat, coolant


CITROEN BERLINGO (K9)
 CITROEN BERLINGO Furgonato (B9)
 CITROEN BERLINGO Furgonato (K9)
 CITROEN C3 AIRCROSS II
 CITROEN C3 III (SX)
 CITROEN C4 III

OE
 3553499
 9812131480

Opening Temperature [°C]: 97
 Operating Mode: Electrically Controlled
 Supplementary Article/Supplementary Info:
 with seal
 Supplementary Article/Supplementary Info:
 with temperature sensor

VTQ0718
Thermostat, coolant


RENAULT TWINGO III
 SMART FORFOUR 2 volumi /Coda spiovente
 (453)
 SMART FORTWO Cabriolet (453)
 SMART FORTWO Coupé (453)

OE
 110612674R
 2812000615
 A2812000615

Housing Type: Synthetic Material Housing
 Opening Temperature [°C]: 87

Cooling System

VTQ0722

Thermostat, coolant



RENAULT ALASKAN
RENAULT MASTER III Autobus (JV)
RENAULT MASTER III Furgonato (FV)
RENAULT MASTER III Pianale piatto/Telaio (EV,
HV, UV)

OE

110604371R
110609356R

Opening Temperature [°C]: 83
Supplementary Article/Supplementary Info:
with seal

VTQ0725

Thermostat, coolant



DACIA DUSTER
DACIA JOGGER
DACIA LOGAN II
DACIA LOGAN III
DACIA LOGAN MCV II
DACIA SANDERO II

OE

110610362R
110616835R
110616875R
110618961R

Housing Type: with housing
Opening Temperature [°C]: 87

VTQ0726

Thermostat, coolant



NISSAN INTERSTAR Autobus (X70)
NISSAN INTERSTAR Furgonato (X70)
NISSAN INTERSTAR Pianale piatto/Telaio
NISSAN PRIMASTAR Autobus (X83)
NISSAN PRIMASTAR Furgonato (X83)
NISSAN PRIMASTAR Pianale piatto/Telaio

OE

0155200QAK
1106100QOF
1106100QAC
1106100QAJ
1106100QAK
4404721

Housing Type: Synthetic Material Housing
Opening Temperature [°C]: 83
Supplementary Article/Supplementary Info:
with seal

VTQ0730

Thermostat, coolant



RENAULT CLIO III Furgonato (SB_, SR_)
RENAULT GRAND SCÉNIC III (JZ0/1_)
RENAULT SCÉNIC III (JZ0/1_)

OE

11 06 030 26R
11 06 055 36R
11060-00Q0B
11060-00Q0K
11060-00Q0S
11060-00Q0T

Opening Temperature [°C]: 83
Supplementary Article/Supplementary Info 2:
with sensor
Supplementary Article/Supplementary Info:
with seal

VTQ0974

Thermostat, coolant



AUDI A2 (8Z0)
SEAT ALTEA (5P1)
SEAT ALTEA XL (5P5, 5P8)
SEAT AROSA (6H)
SEAT CORDOBA (6K1, 6K2)
SEAT CORDOBA (6K2)

OE

032121110B
032121110P
5JF129620
5JF129620A
5Z0129620
6Y0129620

Opening Temperature [°C]: 87
Supplementary Article/Supplementary Info:
with seal

Cooling System

VTQ0978
Thermostat, coolant


AUDI A1 (8X1, 8XF)
 AUDI A1 Sportback (8XA, 8XK)
 SEAT IBIZA V (6J5, 6P5)
 SEAT IBIZA V SPORTCOUPE (6J1, 6P1)
 SEAT IBIZA V ST (6J8, 6P8)
 SEAT TOLEDO IV (KG3)

OE

04B121026C
 04B121111C
 04B121113A

Housing Type: Synthetic Material Housing
 Opening Temperature [°C]: 89
 Supplementary Article/Supplementary Info:
 with seal

Engine

BL004JM
Bolt Kit, cylinder head


ALFA ROMEO MITO (955)
 AUTOBIANCHI A 112
 AUTOBIANCHI Y10
 FIAT 500 (312)
 FIAT 500 C (312)
 FIAT CINQUECENTO (170)

OE

1 549 981
 1549981
 1549981(x10)
 7696197
 7696197(x10)
 W302939

Bolt Head-/Nut Design: Male Hex
 Number of screws: 10
 Spanner Size: 13
 Thread Size: M9x1,25x96

BL009JM
Bolt Kit, cylinder head


ALFA ROMEO AR 6 Furgonato (280)
 ALFA ROMEO AR 8 Furgonato (280)
 ALFA ROMEO AR 8 Pianale piatto/Telaio (280)
 FIAT 131
 FIAT 131 Familiare/Panorama
 FIAT 132

OE

4828150
 4828150 (12X)
 4854648
 4854648 (10X)

Bolt Head-/Nut Design: Male Hex
 Number of screws: 22
 Spanner Size: 17
 Thread Measurement 1: M12x1,25x119
 Thread Measurement 2: M12x1.25x163

BL010JM
Bolt Kit, cylinder head


CHEVROLET (SGM) EPICA
 CHEVROLET ASTRA 2 volumi /Coda spiovente
 CHEVROLET ASTRA Tre volumi
 CHEVROLET AVEO 2 volumi /Coda spiovente
 (T250, T255)
 CHEVROLET AVEO 2 volumi /Coda spiovente

OE

6 07 960
 607960
 607960 (10X)
 71739839
 71739839 (10X)
 7173983910

Bolt Head-/Nut Design: Male Torx
 Number of screws: 10
 Spanner Size: TX - E 12
 Thread Size: M10x1,25x153

BL221JM
Screw Set, cylinder head cover


CITROEN BERLINGO (K9)
 CITROEN BERLINGO Furgonato (K9)
 CITROEN C-ELYSEE
 CITROEN C3 AIRCROSS II
 CITROEN C3 AIRCROSS II VAN (2C_, 2R_)
 CITROEN C3 III (SX)

OE

0132.56
 0132.56 (x20)
 132.56
 132.56 (x20)
 96 448 622 80
 96 448 622 80 (x20)

Additionally required articles (article numbers): KAA-001JM
 Additionally required articles (article numbers): XX-COPERCHIO
 Bolt Head-/Nut Design: Male Hex
 Length [mm]: 41
 Outer Diameter [mm]: 31
 Quantity: 20
 Screw length below head [mm]: 35
 Thread Length [mm]: 31
 Thread Size: M6 x 1,0

Engine

BL306JM

Bolt Kit, cylinder head



CATERHAM SEVEN (CF)
 FORD ASIA / OZEANIA FIGO
 FORD AUSTRALIA FIESTA 2 volumi /Coda spiovente (WS)
 FORD B-MAX (JK)
 FORD B-MAX Van

OE
 1 765 604
 1102783
 1765604
 1765604 (10X)
 1E1010135A
 1E1010135A (10X)

Bolt Head-/Nut Design: Female Torx
 Number of screws: 10
 Spanner Size: TX - T 55
 Thread Size: M10x1,5x143

BL403JM

Bolt Kit, cylinder head



OPEL AGILA (A) (H00)
 OPEL ASTRA CLASSIC (L48)
 OPEL ASTRA CLASSIC Station wagon
 OPEL ASTRA G 2 volumi /Coda spiovente (F48, F08.)
 OPEL ASTRA G Furgonato (F70)

OE
 1111784E00
 1111784E00 (12X)
 24 454 151
 24454151
 24454151 (12X)
 5607937

Bolt Head-/Nut Design: Male Torx
 Number of screws: 12
 Spanner Size: TX - E 12
 Thread Size: M8x1,25x119

BL603JM

Bolt Kit, cylinder head



ALFA ROMEO MITO (955)
 CHEVROLET AVEO 2 volumi /Coda spiovente (T300)
 CHEVROLET AVEO Tre volumi (T300)
 CHRYSLER YPSILON
 CITROEN NEMO Furgonato (AA.)

OE
 0250C6
 0250C6 (10X)
 11117N86J00
 11117N86J00 (10X)
 1562728
 1562728 (10X)

Bolt Head-/Nut Design: Female Splined (Ribe-CV®)
 Number of screws: 10
 Spanner Size: CV - M 12
 Thread Size: M10x1,25x119

BL604JM

Bolt Kit, cylinder head



CITROEN AX (ZA-.)
 CITROEN BERLINGO (MF)
 CITROEN BERLINGO Furgonato (M.)
 CITROEN BX (XB-.)
 CITROEN BX Break (XB-.)
 CITROEN C15 (VD-.)

OE
 0204.83
 020483
 020483 (10X)
 9624951480
 97002474

Bolt Head-/Nut Design: Male Torx
 Number of screws: 10
 Spanner Size: TX - E 14
 Thread Size: M10x1,5x175

BL605JM

Bolt Kit, cylinder head



CITROEN BERLINGO (MF)
 CITROEN BERLINGO Furgonato (M.)
 CITROEN C-CROSSER (EP.)
 CITROEN C-CROSSER ENTERPRISE
 CITROEN C-CROSSER Van (VU.)
 CITROEN C4 Coupé (LA.)

OE
 0204A6
 0204A6 (10X)
 1 792 821
 1111767G01
 1111767G01 (10X)
 1445927

Bolt Head-/Nut Design: Male Torx
 Number of screws: 10
 Spanner Size: TX - E 14
 Thread Size: M12x1,5x121

Engine

BL606JM

Bolt Kit, cylinder head



CITROEN JUMPER Autobus
CITROEN JUMPER Furgonato
CITROEN JUMPER Pianale piatto/Telaio
FIAT DUCATO Autobus (250)
FIAT DUCATO Furgonato (250)
FIAT DUCATO Pianale piatto/Telaio (250)

OE

0204A9
0204A9 (8X)
0204C0
0204C0 (10X)
1 102 676
1 372 302

Bolt Head-/Nut Design: Male Hex
Number of screws: 18
Thread Measurement 1: M10x1,5x140
Thread Measurement 2: M8x1,25x121

BL607JM

Bolt Kit, cylinder head



DACIA LOGAN (LS_)
DACIA LOGAN II
DACIA LOGAN MCV II
DACIA SANDERO
DACIA SANDERO II
NISSAN KUBISTAR Furgonato (X80)

OE

0204A1
0204A1 (10X)
0248.K6
0248K6
0249.C0
0249C0

Bolt Head-/Nut Design: Male Torx
Number of screws: 10
Spanner Size: TX - E 12
Thread Size: M9x1,25x123

BL609JM

Bolt Kit, cylinder head



CITROEN JUMPER Autobus
CITROEN JUMPER Furgonato
CITROEN JUMPER Pianale piatto/Telaio
FIAT DUCATO Autobus (250)
FIAT DUCATO Furgonato (250)
FIAT DUCATO Pianale piatto/Telaio (250)

OE

0204.C6
0204.C7
0204.C8
0204.C9
0204C6
0204C6 (6X)

Bolt Head-/Nut Design: Male Torx
Number of screws: 15
Spanner Size: TX - E 12/14/18
Thread Measurement 1: M12x1,5x165
Thread Measurement 2: M8x1,25x58
Thread size 3: M8x1,25x116,5
Thread Size: M15x1,5x192

BL610JM

Bolt Kit, cylinder head



CITROEN BERLINGO (MF)
CITROEN BERLINGO Furgonato (M_)
CITROEN BX (XB-_)
CITROEN BX Break (XB-_)
CITROEN C15 (VD-_)
CITROEN C15 Pick-up (VDPD)

OE

0204.97
020497
020497 (10X)
2232129000
2232129000 (10X)
9633190080

Bolt Head-/Nut Design: Male Torx
Number of screws: 10
Spanner Size: TX - E 14
Thread Size: M12x1,5x123

BL612JM

Bolt Kit, cylinder head



FIAT DUCATO Autobus (244, Z_)
FIAT DUCATO Autobus (250)
FIAT DUCATO Furgonato (244)
FIAT DUCATO Furgonato (250)
FIAT DUCATO Pianale piatto/Telaio (244)
FIAT DUCATO Pianale piatto/Telaio (250)

OE

0204.E5
0204.E6
0204E5
0204E5 (6X)
0204E6
0204E6 (4X)

Bolt Head-/Nut Design: Male Torx
Number of screws: 10
Spanner Size: TX - E 14/18
Thread Measurement 1: M11x1,5x132
Thread Measurement 2: M14x1,5x191

Engine
BL613JM
Bolt Kit, cylinder head


DACIA DOKKER
 DACIA DOKKER Express
 DACIA DOKKER Pick-up
 DACIA DUSTER
 DACIA DUSTER Furgonato
 DACIA LODGY

OE
 1105600Q0B
 1105600Q0B (10X)
 11056AX000
 11056AX000 (10X)
 6070161200
 6070161200 (10X)

Bolt Head-/Nut Design: Male Torx
 Number of screws: 10
 Spanner Size: TX - E 16
 Thread Size: M11x1,5x126

BL617JM
Bolt Kit, cylinder head


DACIA DOKKER
 DACIA DOKKER Express
 DACIA LODGY
 DACIA LOGAN (LS_)
 DACIA LOGAN EXPRESS (FS_)
 DACIA LOGAN II

OE
 110563297R
 110563297R (5X)
 110565986R
 110565986R (5X)

Bolt Head-/Nut Design: Male Torx
 Number of screws: 10
 Spanner Size: TX - E 14
 Thread Measurement 1: M10x1,5x93
 Thread Measurement 2: M10x1,5x107,5

BL906JM
Bolt Kit, cylinder head


AUDI A1 (8X1, 8XF)
 AUDI A1 Sportback (8XA, 8XK)
 AUDI A3 (8P1)
 AUDI A3 Cabriolet (8P7)
 AUDI A3 Sportback (8PA)
 AUDI A4 (8K2, B8)

OE
 WHT 002 131
 WHT002131
 WHT002131 (10X)

Bolt Head-/Nut Design: Female Star
 Number of screws: 10
 Spanner Size: 12
 Thread Size: M12x1,75x137

BL907JM
Bolt Kit, cylinder head


SEAT CORDOBA (6L2)
 SEAT IBIZA IV (6L1)
 SEAT IBIZA SPORTCOUPE Cassone / coda spiovente (6J1)
 SEAT IBIZA V (6J5, 6P5)
 SEAT IBIZA V (KJ1)

OE
 036 103 384 B
 036103384B
 036103384B (8X)

Bolt Head-/Nut Design: Female Star
 Number of screws: 8
 Spanner Size: X - M 12
 Thread Size: M9x1,25x140

BL908JM
Bolt Kit, cylinder head


AUDI A1 (8X1, 8XF)
 AUDI A1 Sportback (8XA, 8XK)
 AUDI A1 Sportback (GBA)
 AUDI A3 (8V1)
 AUDI A3 Cabriolet (8P7)
 AUDI A3 Cabriolet (8V7)

OE
 WHT 005 305B
 WHT005305
 WHT005305 (10X)
 WHT005305B
 WHT005305B (10X)

Bolt Head-/Nut Design: Female Star
 Number of screws: 10
 Spanner Size: X - M 12
 Thread Size: M10x1,5x115

Engine

BL910JM

Bolt Kit, cylinder head



FORD FOCUS IV
 FORD FOCUS IV Turnier (HP)
 FORD GALAXY
 FORD GALAXY MK III VAN (CK)
 FORD KUGA III (DFK)
 FORD MONDEO V 2 volumi /Coda spiovente

OE
 2080936
 2080936 (10X)
 GK2Q6065FA
 GK2Q6065FA (10X)
 WHT011375
 WHT011375 (10X)

Bolt Head-/Nut Design: Male Hex
 Number of screws: 10
 Spanner Size: 17
 Thread Size: M12x1,5x160

BL911JM

Bolt Kit, cylinder head



ARO 10
 AUDI 80 (81, 85, B2)
 AUDI 80 (89, 89Q, 8A, B3)
 AUDI 80 (8C, B4)
 AUDI 80 Avant (8C, B4)
 AUDI 90 (81, 85, B2)

OE
 068103384A
 068103384A (10X)
 1005250
 1005250 (10X)

Bolt Head-/Nut Design: Female Star
 Number of screws: 10
 Spanner Size: X - M 12
 Thread Size: M12x1,75x115

BL913JM

Bolt Kit, cylinder head



DODGE CALIBER
 INFINITI Q30
 INFINITI Q50
 INFINITI Q70 (Y51)
 INFINITI QX30
 JEEP COMPASS (MK49)

OE
 11056HG00A
 11056HG00A (10X)
 11056HG00B
 11056HG00B (10X)
 6510160369 (10X)
 6510160469

Bolt Head-/Nut Design: Male Torx
 Number of screws: 10
 Spanner Size: TX - E 18
 Thread Size: M12x1,5x226

BL914JM

Bolt Kit, cylinder head



CHRYSLER PT CRUISER (PT_)
 CHRYSLER PT CRUISER Combi Van (PT_)
 MERCEDES-BENZ (FJDA) VITO Autobus
 MERCEDES-BENZ CLASSE C (W202)
 MERCEDES-BENZ CLASSE C (W203)
 MERCEDES-BENZ CLASSE C Coupe (CL203)

OE
 5073703AA
 5073703AA (10X)
 6119901022
 6119901022 (10X)
 A6119901022
 A6119901022 (10X)

Bolt Head-/Nut Design: Male Torx
 Number of screws: 10
 Spanner Size: TX - E 18
 Thread Size: M12x1,75x102

OP00015JM

Oil Pump



ALFA ROMEO 159 (939)
 ALFA ROMEO 159 Sportwagon (939)
 FIAT CROMA (194)
 FIAT GRANDE PUNTO (199)
 FIAT SEDICI
 OPEL ASTRA H (L48)

OE
 55187762

For OE number: 55187762
 Supplementary Article/Supplementary Info 2:
 With shaft oil seal
 Supplementary Article/Supplementary Info:
 with seal
 Supplementary Article/Supplementary Info:
 With suction pipe

Engine

OP00023JM

Oil Pump



MERCEDES-BENZ CITAN Combi (415)
 MERCEDES-BENZ CITAN Furgonato (415)
 MERCEDES-BENZ CITAN Mixto (415)
 MERCEDES-BENZ CLA Coupé (C117)
 MERCEDES-BENZ CLA Shooting Brake (X117)
 MERCEDES-BENZ CLASSE A (W176)

OE
 A6071800101

For OE number: A 607 180 01 01
 Number of Teeth: 22

OP00026JM

Oil Pump



FORD FOCUS IV
 FORD FOCUS IV Turnier (HP)
 FORD GALAXY
 FORD GALAXY MK III VAN (CK)
 FORD KUGA III (DFK)
 FORD MONDEO V 2 volumi /Coda spiovente

OE
 HG9Q6600BA

For OE number: HG9Q6600BA
 Number of Teeth: 19
 Pump Type: Vane Pump
 Supplementary Article/Supplementary Info:
 with electrical oil pressure valve

OP00031JM

Oil Pump



BMW 3 (F30, F35, F80)
 BMW 3 GRAN TURISMO (F34)
 BMW 3 Touring (F31)
 BMW 3 Touring Van (F31)
 BMW 4 Cabriolet (F33, F83)
 BMW 4 Coupé (F32, F82)

OE
 11417823009

For OE number: 11417823009
 Fuel Type: Diesel
 Operating Mode: Mechanical
 Pump Type: Tandem Pump
 Supplementary Article/Supplementary Info:
 Without gasket / seal

Filter

FA-0155JM

Air Filter



HYUNDAI ELANTRA Tre volumi (AD)
 HYUNDAI ELANTRA Tre volumi (MD, UD)
 HYUNDAI i30 (FD)
 HYUNDAI i30 (GD)
 HYUNDAI i30 Coupé
 HYUNDAI i30 CW (GD)

OE
 28113-3X000
 281133-X000AS
 S281 133X000
 S28113-3X000

Filter Type: Filter Insert
 Height [mm]: 51
 Length [mm]: 257
 Width [mm]: 163

FA-0960JM

Air Filter



AUDI A3 (8P1)
 AUDI A3 Cabriolet (8P7)
 AUDI A3 Sportback (8PA)
 SEAT ALTEA (5P1)
 SEAT ALTEA XL (5P5, 5P8)
 SEAT LEON (1M1)

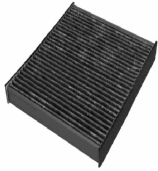
OE
 1K0 129 60
 1K0 129 607 C
 1K0 129 620 C

Filter Type: Filter Insert
 Height [mm]: 221
 Inner Diameter 1 [mm]: 68
 Outer Diameter [mm]: 150

Filter

FAA-100JM

Filter, interior air



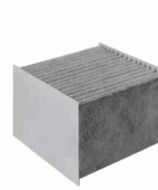
TESLA MODEL S
TESLA MODEL X

OE
1688910-00-C

Filter Type: Activated Carbon Filter
Height [mm]: 30
Length [mm]: 230
Width [mm]: 208

FAA-102JM

Filter, interior air



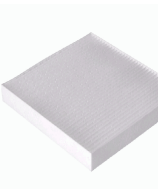
BYD SEA MEW

OE
14765084-00
EQEA-8100242

Filter Type: Activated Carbon Filter
Height [mm]: 63
Length [mm]: 131
Width [mm]: 135

FAA-103JM

Filter, interior air



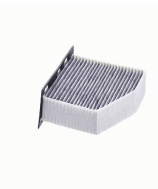
MG MG HS

OE
11124596

Filter Type: Pollen Filter
Height [mm]: 25
Length [mm]: 207
Width [mm]: 198

FAA-104JM

Filter, interior air



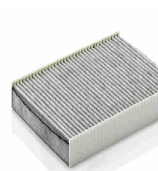
AUDI A3 (8P1)
AUDI A3 Cabriolet (8P7)
AUDI A3 Cabriolet (8V7)
AUDI A3 Sportback (8PA)
AUDI Q3 (8U)
AUDI TT (8J3)

OE
1K2 819 65
1K2 819 653
1K2 819 653 A
1K2 819 653 B

Driver Position: For right-hand drive vehicles
Filter Type: Activated Carbon Filter
Height [mm]: 57
Length [mm]: 215
Width [mm]: 272

FAA-106JM

Filter, interior air



AUDI A3 (8L1)
AUDI TT (8N3)
AUDI TT Roadster (8N9)
SEAT AROSA (6H)
SEAT CORDOBA (6K1, 6K2)
SEAT CORDOBA (6K2)

OE
1H0 091 70
1H0 091 700
1H0 091 800
1H0 091 800 SE
1H0 819 638
1H0 819 644 B

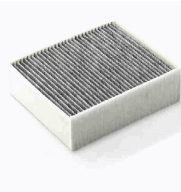
Filter Type: Activated Carbon Filter
Height [mm]: 25
Length [mm]: 281
Width [mm]: 206

Filter
FAA-109JM
Filter, interior air


OPEL ASTRA CLASSIC (L48)
 OPEL ASTRA CLASSIC Station wagon
 OPEL ASTRA CLASSIC Tre volumi
 OPEL ASTRA G 2 volumi /Coda spiovente (F48_,
 F08_)
 OPEL ASTRA G Cabriolet (F67)

OE
 13175554
 1718046
 6808607
 9121627
 95528292

Filter Type: Activated Carbon Filter
 Height [mm]: 31
 Length [mm]: 297
 Width [mm]: 199

FAA-110JM
Filter, interior air


CHEVROLET ZAFIRA (F75)
 OPEL ASTRA G 2 volumi /Coda spiovente (F48_,
 F08_)
 OPEL ASTRA G Cabriolet (F67)
 OPEL ASTRA G CLASSIC (T98)
 OPEL ASTRA G CLASSIC Caravan (F35)

OE
 1718042
 9118699
 95528290

Filter Type: Activated Carbon Filter
 Height [mm]: 32
 Length [mm]: 272
 Width [mm]: 234

FAA-111JM
Filter, interior air


FORD FOCUS (DAW, DBW)
 FORD FOCUS C-MAX
 FORD FOCUS II (DA_)
 FORD FOCUS II Cabriolet
 FORD FOCUS II Cassone / Furgonato /
 Promiscuo

OE
 1354 953
 1354952
 1452346
 1494691
 1713 182
 30676484

Filter Type: Activated Carbon Filter
 Height [mm]: 35
 Length [mm]: 235
 Width [mm]: 210

FAA-112JM
Filter, interior air


AUDI A4 (8E2, B6)
 AUDI A4 (8EC, B7)
 AUDI A4 Avant (8E5, B6)
 AUDI A4 Avant (8ED, B7)
 AUDI A4 B7 Cabriolet (8HE)
 AUDI A4 Cabriolet (8H7, B6, 8HE, B7)

OE
 4B0 819 43
 4B0 819 439 B
 4B0 819 439 C
 4B1819441C
 4B1819441D
 8E0 819 439 C

Filter Type: Activated Carbon Filter
 Height [mm]: 30
 Length [mm]: 300
 Width [mm]: 204

FAA-113JM
Filter, interior air


AUDI 80 (8C, B4)
 AUDI 80 Avant (8C, B4)
 AUDI A4 (8D2, B5)
 AUDI A4 Avant (8D5, B5)
 AUDI CABRIOLET (8G7, B4)
 AUDI COUPE (89, 8B)

OE
 3B0 091 80
 3B0 091 800
 893091400A
 893819439
 8A0 819 439 B
 8A0819439

Filter Type: Activated Carbon Filter
 Height [mm]: 27
 Length [mm]: 398
 Width [mm]: 148

Filter

FAA-116JM

Filter, interior air



FORD FOCUS (DAW, DBW)
 FORD FOCUS Cassone / Furgonato / Promiscuo (DNW)
 FORD FOCUS Station wagon (DNW)
 FORD FOCUS Tre volumi (DFW)
 FORD TOURNEO CONNECT

OE

1062253
 1121 106
 1139 654
 1382 861
 1452 329
 1585195

Filter Type: Activated Carbon Filter

Height [mm]: 30
 Length [mm]: 348
 Width [mm]: 162

FAA-117JM

Filter, interior air



ALFA ROMEO 156 (932)
 ALFA ROMEO 156 Sportwagon (932)
 FIAT BRAVA (182)
 FIAT BRAVO I (182)
 FIAT MAREA (185)
 FIAT MAREA Weekend (185)

OE

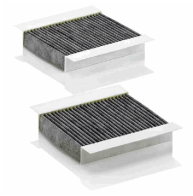
60 815 647
 60653641

Filter Type: Activated Carbon Filter

Height [mm]: 30
 Length [mm]: 288
 Width [mm]: 160

FAA-118JM

Filter, interior air



ALFA ROMEO 147 (937)
 ALFA ROMEO 156 (932)
 ALFA ROMEO 156 Sportwagon (932)
 ALFA ROMEO GT (937)

OE

46799653
 6001073277
 71754154
 71772198
 77366431

Filter Type: Activated Carbon Filter

Height [mm]: 31
 Length [mm]: 175
 Quantity Unit: Kit
 Width [mm]: 138

FAA-120JM

Filter, interior air



IRMSCHER COUPE
 OPEL ASTRA F (56_, 57_)
 OPEL ASTRA F 2 volumi /Coda spiovente (53_, 54_, 58_, 5)
 OPEL ASTRA F Cabriolet (53_B)
 OPEL ASTRA F CLASSIC 2 volumi /Coda

OE

1718044
 905658793
 91132361
 9121625

Filter Type: Activated Carbon Filter

Height [mm]: 17
 Length [mm]: 419
 Width [mm]: 153

FAA-122JM

Filter, interior air



AUDI Q7 (4L)
 AUDI Q7 Van (4LB)
 PORSCHE CAYENNE (955)
 VW AMAROK (2H_, S1B)
 VW AMAROK Pianale piatto/Telaio (S1B)
 VW CALIFORNIA T5 Camper (7EC, 7EF, 7EG, 7HF)

OE

7E0819631
 7H0 819 631 A
 955.572.21
 955.572.219.10
 955.819.631.00
 JZW 819 653 E

Filter Type: Activated Carbon Filter

Height [mm]: 30
 Length [mm]: 278
 Width [mm]: 219

Filter
FAA-123JM
Filter, interior air

 MINI MINI (R50, R53)
 MINI MINI (R56)
 MINI MINI Cabriolet (R57)
 MINI MINI CLUBMAN (R55)
 MINI MINI CLUBVAN (R55)
 MINI MINI COUNTRYMAN (R60)

OE
 1496711
 1497542
 1497544
 3422665
 64 11 3 42
 64 11 3 422 665

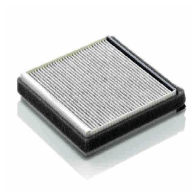
 Filter Type: Activated Carbon Filter
 Height [mm]: 32
 Length [mm]: 449
 Width [mm]: 120

FAA-125JM
Filter, interior air

 SMART FORTWO Cabrio (451)
 SMART FORTWO Coupé (451)

OE
 272774711R
 451 830 00
 451 830 00 18
 453 835 03 00
 A 451 830 00 18
 A4538350300

 Filter Type: Activated Carbon Filter
 Height [mm]: 26
 Length [mm]: 214
 Width [mm]: 214

FAA-127JM
Filter, interior air

 CITROEN BERLINGO (MF)
 CITROEN BERLINGO Furgonato (M_)
 CITROEN XANTIA (X1)
 CITROEN XANTIA (X2)
 CITROEN XANTIA Break (X1)
 CITROEN XANTIA Break (X2)

OE
 6441 EH
 6447 PF
 6447 SR

 Filter Type: Activated Carbon Filter
 Height [mm]: 19
 Length [mm]: 211
 Width [mm]: 199

FAA-129JM
Filter, interior air


OPEL MERIVA

OE
 13271407
 1808527
 6808605
 93174801
 93294546
 95528291

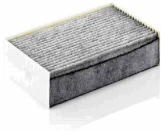
 Filter Type: Activated Carbon Filter
 Height [mm]: 32
 Length [mm]: 210
 Width [mm]: 241

FAA-130JM
Filter, interior air

 FORD GALAXY (WGR)
 FORD GALAXY MK I VAN (WGR)
 SEAT ALHAMBRA (7V8, 7V9)
 SEAT ALHAMBRA VAN (7V8, 7V9)
 VW SHARAN (7M8, 7M9, 7M6)
 VW SHARAN VAN (7M_)

OE
 1054 468
 1107 351
 1113 627
 1125 536
 11421130389
 11421711560

 Filter Type: Activated Carbon Filter
 Height [mm]: 30
 Length [mm]: 536
 Width [mm]: 111

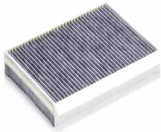
Filter
FAA-131JM
Filter, interior air


RENAULT FLUENCE (L30_)
 RENAULT MEGANE CC (EZ0/1_)
 RENAULT MEGANE III 2 volumi /Coda spiovente (BZ0_)
 RENAULT MEGANE III Combi Van (KZ0/1)
 RENAULT MEGANE III Coupé (DZ0/1_)

OE

27 27 734
 27 27 734 88R
 27 27 768 11R
 27 27 789 70R

Filter Type: Activated Carbon Filter
 Fitting Position: below the middle console
 Height [mm]: 35
 Length [mm]: 260
 Width [mm]: 150

FAA-137JM
Filter, interior air


MERCEDES-BENZ CLASSE A (W168)
 MERCEDES-BENZ Vaneo (414)

OE

168 830 01
 168 830 01 18
 168 830 07 18
 168 830 08 18
 A 168 830 01 18
 A 168 830 07 18

Filter Type: Activated Carbon Filter
 Height [mm]: 34
 Length [mm]: 365
 Width [mm]: 246

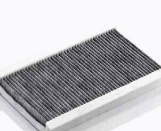
FAA-139JM
Filter, interior air


CITROEN C5 III (RD_)
 CITROEN C5 III Break (TD_)
 CITROEN C6 (TD_)
 PEUGEOT 407 (6D_)
 PEUGEOT 407 Coupé (6C_)
 PEUGEOT 407 SW (6E_)

OE

6479 45
 6479 46
 9682603680

Filter Type: Activated Carbon Filter
 Height [mm]: 32
 Length [mm]: 270
 Width [mm]: 196

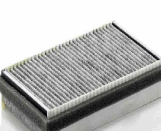
FAA-140JM
Filter, interior air


OPEL COMBO (71_)
 OPEL CORSA B (73_, 78_, 79_)
 OPEL CORSA B Furgonato (73_)
 OPEL CORSA B Station wagon (F35)
 OPEL TIGRA (95_)

OE

1718045
 91132360
 9121626

Filter Type: Activated Carbon Filter
 Height [mm]: 17,5
 Length [mm]: 328
 Width [mm]: 188

FAA-141JM
Filter, interior air


FIAT MULTIPLA (186)
 FIAT MULTIPLA VAN (186_)

OE

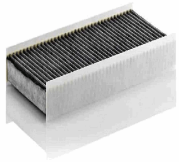
00 1302 311 0
 46513960

Filter Type: Activated Carbon Filter
 Height [mm]: 34
 Length [mm]: 266
 Width [mm]: 156

Filter

FAA-142JM

Filter, interior air



CITROEN JUMPY
 CITROEN JUMPY Furgonato
 CITROEN JUMPY Pianale piatto/Telaio
 FIAT SCUDO (270_)
 FIAT SCUDO Furgonato (270_)
 FIAT SCUDO Pianale piatto/Telaio (270_)

OE
 1497498080
 6441EJ
 6447 YL
 6447 YN
 6447RG
 6447TC

Filter Type: Activated Carbon Filter
 Fitting Position: Engine Bay
 Height [mm]: 48
 Length [mm]: 376
 Width [mm]: 176

FAA-143JM

Filter, interior air



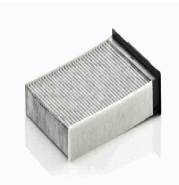
AUDI A6 (4F2, C6)
 AUDI A6 Allroad (4FH, C6)
 AUDI A6 Avant (4F5, C6)
 AUDI R8
 AUDI R8 Spyder
 LAMBORGHINI GALLARDO

OE
 4F0 819 43
 4F0 819 439 A
 4F0 819 439 C
 4F0 898 438 A
 4F0 898 438 B
 4F0 898 438 C

Filter Type: Activated Carbon Filter
 Height [mm]: 30
 Length [mm]: 307
 Quantity Unit: Kit
 Width [mm]: 99

FAA-146JM

Filter, interior air



RENAULT MEGANE II (BM0/1_, CM0/1_)
 RENAULT MEGANE II Cassone / Furgonato / Promiscuo (KM_)
 RENAULT MEGANE II Coupe-Cabriolet (EM0/1_)
 RENAULT MEGANE II Hatchback van (KM0/2_)
 RENAULT MEGANE II Station wagon (KM0/1_)

OE
 77 01 064 235
 86 71 017 374

Filter Type: Activated Carbon Filter
 Fitting Position: below the middle console
 Height [mm]: 42
 Length [mm]: 255
 Width [mm]: 186

FAA-147JM

Filter, interior air



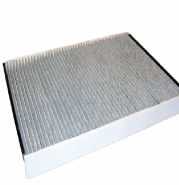
CITROEN C8 (EA_, EB_)
 CITROEN C8 Van (EA_, EB_)
 CITROEN JUMPY (U6U)
 CITROEN JUMPY Furgonato (BS_, BT_, BY_, BZ_)
 CITROEN JUMPY Pianale piatto/Telaio (BU_, BV_, BW_, BX_)

OE
 1483883080
 6447 SP
 6447 TA
 6479 42
 9655190480

Filter Type: Activated Carbon Filter
 Height [mm]: 33
 Length [mm]: 405
 Width [mm]: 164

FAA-150JM

Filter, interior air



MERCEDES-BENZ SPRINTER 3,5-t Autobus (906)
 MERCEDES-BENZ SPRINTER 3,5-t Furgonato (906)
 MERCEDES-BENZ SPRINTER 3,5-t Pianale piatto/Telaio (906)
 MERCEDES-BENZ SPRINTER 3-t Autobus (906)

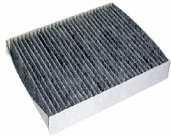
OE
 2E0 819 638 A
 2E0819021F
 2E0819638
 68012876AA
 906 830 03 18
 9068300218

Filter Type: Activated Carbon Filter
 Height [mm]: 35
 Length [mm]: 357
 Width [mm]: 238

Filter

FAA-151JM

Filter, interior air



CITROEN XSARA PICASSO (N68)

OE

1496710
1496711
3422664
64113422664
64311496710
64311496711

Filter Type: Activated Carbon Filter

Height [mm]: 30
Length [mm]: 255
Width [mm]: 200

FAA-152JM

Filter, interior air



MERCEDES-BENZ EQV (W447)
MERCEDES-BENZ eVITO Tourer (W447)
MERCEDES-BENZ MARCO POLO Camper (W447)
MERCEDES-BENZ V-CLASS (W447)
MERCEDES-BENZ VITO Furgonato (W447)
MERCEDES-BENZ VITO Mixto (W447)

OE

000 835 15
000 835 15 00
A 000 835 15 00

Filter Type: Activated Carbon Filter

Fitting Position: Boot
Height [mm]: 31
Length [mm]: 211
Width [mm]: 151

FC-025JM

Fuel filter



LAND ROVER DISCOVERY V (LR_)
LAND ROVER DISCOVERY V VAN (L462)

OE

LR103234

Filter Type: Filter Insert

For OE number: LR103234
Height [mm]: 201
Outer Diameter [mm]: 104

Joints

GI0122JM

Joint Kit, drive shaft



BMW 3 (E36)
BMW 3 Cabriolet (E36)
BMW 3 Compact (E36)
BMW 3 Coupe (E36)
BMW 3 Touring (E36)
BMW Z3 (E36)

OE

33211227599

For OE number: 33211227599

Int. teeth, diff.side, conn.to transm.: 24
Length [mm]: 24

GI0123JM

Joint Kit, drive shaft



BMW 3 (E36)
BMW 3 (E46)
BMW 3 Cabriolet (E36)
BMW 3 Cabriolet (E46)
BMW 3 Compact (E36)
BMW 3 Compact (E46)

OE

33211227032
33211227172
33211227597
33211227606
33211229392
33211229587

External Teeth, diff.side: 27

Int. teeth, diff.side, conn.to transm.: 24
Internal Teeth, wheel side: 24
Length [mm]: 126,5
Number of Teeth, ABS ring: 48
Seal Diameter [mm]: 64
Thread Size: M24X1,5

Joins

GI0216JM

Joint Kit, drive shaft



ALFA ROMEO TONALE (965_)
FIAT 500X
JEEP COMPASS (MP)
JEEP RENEGADE Fuoristrada chiuso
JEEP RENEGADE Fuoristrada chiuso (BU)
JEEP RENEGADE VAN (BU, B1)

OE

52116197
52170753
68469887AA
77367303

Fitting Position: Front Axle
Thread Size: M24X1,5

GI0291JM

Joint Kit, drive shaft



FIAT SEDICI
SUZUKI SWIFT III (MZ, EZ)
SUZUKI SX4 (EY, GY)
SUZUKI SX4 Tre volumi (GY)

OE

151623
44101-79J30
4410179J01
4410179J30
4410180J01
4410180J10

External Teeth, wheel side: 28
Internal Teeth, wheel side: 29
Machined: Without groove in internal component
Material: Elastomer
Outer Diameter [mm]: 72,3
Seal Diameter [mm]: 58,3
Standard: 8 Balls/Sfere
Thread Size: M22 x 1,5

GI0348JM

Joint Kit, drive shaft



FORD FOCUS (DAW, DBW)
FORD FOCUS Cassone / Furgonato / Promiscuo (DNW)
FORD FOCUS Station wagon (DNW)
FORD FOCUS Tre volumi (DFW)

OE

3652045
C9120B071000
XS4C3C092BA
XS4W3B436BB

External Teeth, diff.side: 26
Int. teeth, diff.side, conn.to transm.: 23
Length [mm]: 481
Seal Diameter [mm]: 40

GI0358JM

Joint Kit, drive shaft



FORD COUGAR (EC_)
FORD ESCORT VII (GAL, AAL, ABL)
FORD MONDEO I (GBP)
FORD MONDEO I Station wagon (BNP)
FORD MONDEO I Tre volumi (GBP)
FORD MONDEO II (BAP)

OE

1447555
1S713C356AD

External Teeth, diff.side: 26
Int. teeth, diff.side, conn.to transm.: 33
Length [mm]: 168,6
Seal Diameter [mm]: 40

GI038JM

Joint Kit, drive shaft



DR DR 4

OE

2200400U2212-F01

External Teeth, wheel side: 25
Fitting Position: Wheel Side
Internal Teeth, wheel side: 22
Number of Teeth, ABS ring: 48
Overall Length [mm]: 153
Seal Diameter [mm]: 52,5
Thread Size: M22

Joins

GI0393JM

Joint Kit, drive shaft



FORD ESCORT '81 Express (AVA)
 FORD ESCORT '86 Express (AVF)
 FORD ESCORT III (GAA)
 FORD ESCORT III Cabriolet (ALD)
 FORD ESCORT III Station wagon (AWA)
 FORD ESCORT IV (GAF, AWF, ABFT)

OE
 1079588
 6069110
 6079195
 6099110
 79TT3K187BA
 81AG3K187AA

External Teeth, wheel side: 23
 Internal Teeth, wheel side: 22
 Length [mm]: 146
 Seal Diameter [mm]: 55
 Thread Size: M20X1,5

GI0421JM

Joint Kit, drive shaft



CHEVROLET TRAX
 OPEL MOKKA
 OPEL MOKKA X VAN (J13)
 VAUXHALL MOKKA

OE
 1603041
 95908458
 95908459

External Teeth, wheel side: 25
 For shaft diameter [mm]: 87
 Internal Teeth, wheel side: 23
 Length [mm]: 153
 Seal Diameter [mm]: 52
 Technical Information Number: Groove Type Inner
 Thread Size: M24X1,5

GI0427JM

Joint Kit, drive shaft



CHEVROLET CAPTIVA (C100, C140)
 CHEVROLET CAPTIVA Van (C100)
 OPEL ANTARA
 VAUXHALL ANTARA (J26, H26)

OE
 4804590
 93743415

External Teeth, diff.side: 27
 Int. teeth, diff.side, conn.to transm.: 34
 Length [mm]: 180
 Seal Diameter [mm]: 35

GI0431JM

Joint Kit, drive shaft



CHEVROLET AVEO 2 volumi /Coda spiovente (T250, T255)
 CHEVROLET AVEO Tre volumi (T200)
 CHEVROLET AVEO Tre volumi (T250, T255)
 CHEVROLET KALOS
 DAEWOO KALOS (KLAS)

OE
 96832203
 96832204

External Teeth, wheel side: 22
 For OE number: 96832203
 Internal Teeth, wheel side: 22
 Length [mm]: 150
 Number of Teeth, ABS ring: 47
 Seal Diameter [mm]: 52
 Thread Size: M20X1,5

GI0444JM

Joint Kit, drive shaft



OPEL ASTRA J
 OPEL ASTRA J Sports Tourer
 OPEL ASTRA J Tre volumi
 OPEL CASCADA (W13)
 VAUXHALL ASTRA Mk VI (J)
 VAUXHALL ASTRA Mk VI (J) Sports Tourer

OE
 13306856
 374691

External Teeth, diff.side: 34
 Int. teeth, diff.side, conn.to transm.: 23
 Length [mm]: 121,5
 Seal Diameter [mm]: 37,5
 Transmission Type: Automatic Transmission

Joints

GI0450JM

Joint Kit, drive shaft



OPEL ASTRA J
OPEL ASTRA J Cassone / coda spiovente (P10)
OPEL ASTRA J Cassone / Furgonato /
Promiscuo (P10)
OPEL ASTRA J Sports Tourer
OPEL ASTRA J Tre volumi

OE
13335199
1603410
374688
93190192

External Teeth, diff.side: 22
Int. teeth, diff.side, conn.to transm.: 23
Joint Type: Tripot Joint
Length [mm]: 173,5
Seal Diameter [mm]: 35

GI0463JM

Joint Kit, drive shaft



OPEL ASTRA CLASSIC (L48)
OPEL ASTRA CLASSIC Station wagon
OPEL ASTRA CLASSIC Tre volumi
OPEL ASTRA H (L48)
OPEL ASTRA H Furgonato (L70)
OPEL ASTRA H GTC (L08)

OE
1603300
93189381

External Teeth, diff.side: 34
Int. teeth, diff.side, conn.to transm.: 28
Length [mm]: 100
Seal Diameter [mm]: 37,5

GI0477JM

Joint Kit, drive shaft



OPEL CORSA B (73_, 78_, 79_)
VAUXHALL CORSA Mk I (B)

OE

Fitting Position: Front Axle left and right
Fitting Position: Wheel Side
Thread Size: M20X1,5

GI0478JM

Joint Kit, drive shaft



OPEL CORSA A 2 volumi /Coda spiovente (93_,
94_, 98_, 9
OPEL CORSA A Furgonato
OPEL CORSA A TR (91_, 92_, 96_, 97_)
VAUXHALL ASTRA Mk III (F) 2 volumi /Coda
spiovente

OE

0374077
0374092
07837456
07837457
07839615
374077

External Teeth, wheel side: 22
Internal Teeth, wheel side: 28
Length [mm]: 152,5
Seal Diameter [mm]: 52,2
Thread Size: M20X1

GI0479JM

Joint Kit, drive shaft



OPEL ASTRA G 2 volumi /Coda spiovente (F48_,
F08_)
OPEL ASTRA G Cabriolet (F67)
OPEL ASTRA G CLASSIC (T98)
OPEL ASTRA G CLASSIC Caravan (F35)
OPEL ASTRA G CLASSIC Tre volumi (T98)

OE

0374002
374002
90538427

External Teeth, wheel side: 33
Internal Teeth, wheel side: 22
Length [mm]: 153,5
Seal Diameter [mm]: 52
Thread Size: M20X1

Joints

GI0482JM

Joint Kit, drive shaft



OPEL COMBO Cassone / Furgonato / Promiscuo
 OPEL COMBO Tour
 OPEL CORSA C (F08, F68)
 OPEL CORSA C Furgonato (F08, W5L)
 OPEL TIGRA TwinTop
 VAUXHALL COMBO Mk II (C) Cassone /

OE

Fitting Position: Front Axle Right
 Fitting Position: Wheel Side
 Thread Size: M20X1,5

GI0486JM

Joint Kit, drive shaft



RENAULT TRAFIC II Autobus (JL)
 RENAULT TRAFIC II Furgonato (FL)
 VAUXHALL VIVARO Combi (J7)
 VAUXHALL VIVARO Furgonato (F7)
 VAUXHALL VIVARO Pianale piatto/Telaio (E7)

OE

Fitting Position: Front Axle left and right
 Fitting Position: Wheel Side
 Thread Size: M22X1,5

GI0489JM

Joint Kit, drive shaft



OPEL ASCONA C (81_, 86_, 87_, 88_)
 OPEL ASCONA C 2 volumi /Coda spiovente (84_, 89_)
 OPEL ASTRA F (56_, 57_)
 OPEL ASTRA F 2 volumi /Coda spiovente (53_, 54_, 58_, 5)

OE

0374066
 374066
 901571131
 90157131

External Teeth, wheel side: 22
 Internal Teeth, wheel side: 22
 Length [mm]: 145
 Seal Diameter [mm]: 52
 Thread Size: M20X1

GI0511JM

Joint Kit, drive shaft



MERCEDES-BENZ CLASSE C (W204)
 MERCEDES-BENZ CLASSE C Coupé (C204)
 MERCEDES-BENZ CLASSE C T-Model (S204)
 MERCEDES-BENZ CLASSE GLK (X204)
 MERCEDES-BENZ CLS (C218)
 MERCEDES-BENZ CLS Shooting Brake (X218)

OE

2043301400
 A2043301400

External Teeth, wheel side: 30
 For OE number: 2043301400
 Internal Teeth, wheel side: 25
 Length [mm]: 108,5
 Seal Diameter [mm]: 71
 Thread Size: M16X1,5

GI0520JM

Joint Kit, drive shaft



MERCEDES-BENZ 190 (W201)
 MERCEDES-BENZ CLASSE C (W202)
 MERCEDES-BENZ CLASSE C Station wagon (S202)
 MERCEDES-BENZ CLASSE E (W210)
 MERCEDES-BENZ CLASSE E Pianale

OE

2013500813
 A2013500813

Int. teeth, diff.side, conn.to transm.: 25
 Length [mm]: 26

Joins

GI0521JM

Joint Kit, drive shaft



MERCEDES-BENZ CLASSE E (W213)
 MERCEDES-BENZ CLASSE E All-Terrain (S213)
 MERCEDES-BENZ CLASSE E Cabriolet (A238)
 MERCEDES-BENZ CLASSE E Coupè (C238)
 MERCEDES-BENZ CLASSE E T-Model (S213)
 MERCEDES-BENZ CLS (C257)

OE

2133309902
 2533305501
 2533307900
 2533308000
 A2133309902
 A2533305501

External Teeth, diff.side: 27
 Int. teeth, diff.side, conn.to transm.: 24
 Length [mm]: 155,5
 Seal Diameter [mm]: 41
 Thread Size: 27

GI0525JM

Joint Kit, drive shaft



MERCEDES-BENZ CLASSE GL (X164)
 MERCEDES-BENZ CLASSE GL (X166)
 MERCEDES-BENZ CLASSE M (W164)
 MERCEDES-BENZ CLASSE M (W166)
 MERCEDES-BENZ CLASSE R (W251, V251)
 MERCEDES-BENZ GLE (W166)

OE

1643301300
 1643301901
 1663301300
 1663301501
 A1643301300
 A1643301901

External Teeth, diff.side: 37
 Int. teeth, diff.side, conn.to transm.: 33
 Length [mm]: 375
 Seal Diameter [mm]: 45

GI0531JM

Joint Kit, drive shaft



MERCEDES-BENZ CLASSE A (W169)
 MERCEDES-BENZ CLASSE B (W245)

OE

1693702772
 1693704872
 1693705672
 1693706372
 1693706472
 A1693702772

External Teeth, wheel side: 25
 Internal Teeth, wheel side: 25
 Length [mm]: 130
 Seal Diameter [mm]: 60,4
 Technical Information Number: Groove Type Inner
 Thread Size: M20X1,5

GI0533JM

Joint Kit, drive shaft



MERCEDES-BENZ CLASSE A (W168)

OE

Fitting Position: Front Axle
 Fitting Position: Wheel Side
 Thread Size: M20X1,5

GI0623JM

Joint Kit, drive shaft



CITROEN XSARA Break (N2)
 CITROEN XSARA Cassone / coda spiovente
 CITROEN XSARA Furgonato
 PEUGEOT 206 2 volumi /Coda spiovente (2A/C)
 PEUGEOT 206 SW (2E/K)
 PEUGEOT 206 Tre volumi

OE

Fitting Position: Front Axle Left
 Fitting Position: Transmission End

Joins

GI0631JM

Joint Kit, drive shaft



CITROEN JUMPER Autobus
CITROEN JUMPER Furgonato
CITROEN JUMPER Pianale piatto/Telaio
FIAT DUCATO Autobus (250)
FIAT DUCATO Furgonato (250)
FIAT DUCATO Pianale piatto/Telaio (250)

OE

1349790080
1355334080
1357488080
1607113380
3272PE
3272PF

External Teeth, diff.side: 31
Int. teeth, diff.side, conn.to transm.: 29
Length [mm]: 186,5
Seal Diameter [mm]: 44,95

GI0656JM

Joint Kit, drive shaft



CITROEN JUMPER Autobus (230P)
CITROEN JUMPER Autobus (244, Z_)
CITROEN JUMPER Furgonato (230L)
CITROEN JUMPER Furgonato (244)
CITROEN JUMPER Pianale piatto/Telaio (230)
CITROEN JUMPER Pianale piatto/Telaio (244)

OE

1473299080
1491235080
3272CJ

External Teeth, diff.side: 37
Int. teeth, diff.side, conn.to transm.: 39
Length [mm]: 168,5
Seal Diameter [mm]: 40

GI0667JM

Joint Kit, drive shaft



CITROEN BERLINGO (MF)
CITROEN BERLINGO Furgonato (M_)
CITROEN C4 Coupé (LA_)
CITROEN C4 I (LC_)
CITROEN XSARA (N1)
CITROEN XSARA Break (N2)

OE

3272KY
32731C
32733Z
32734J
32736H

External Teeth, wheel side: 25
Internal Teeth, wheel side: 22
Length [mm]: 134
Number of Teeth, ABS ring: 29
Seal Diameter [mm]: 60
Technical Information Number: Groove Type
Inner
Thread Size: M24X1,5

GI0668JM

Joint Kit, drive shaft



CITROEN JUMPER Autobus (230P)
CITROEN JUMPER Autobus (244, Z_)
CITROEN JUMPER Furgonato (230L)
CITROEN JUMPER Furgonato (244)
CITROEN JUMPER Pianale piatto/Telaio (230)
CITROEN JUMPER Pianale piatto/Telaio (244)

OE

1495545080
9566722380

External Teeth, wheel side: 35
Internal Teeth, wheel side: 45
Length [mm]: 190
Seal Diameter [mm]: 70
Technical Information Number: Groove Type
Inner
Thread Size: M33X1,5

GI0674JM

Joint Kit, drive shaft



CITROEN C4 II (B7)
CITROEN DS4
CITROEN DS5
DS DS 4 / DS 4 CROSSBACK
DS DS5
PEUGEOT 3008

OE

3272QF
3272TH
3272TK
3272WX
3273QQ
3273TT

External Teeth, wheel side: 25
Length [mm]: 152,5
Seal Diameter [mm]: 58,5
Technical Information Number: Groove Type
Inner
Thread Size: M24X1,5

Joins

GI0682JM

Joint Kit, drive shaft



CITROEN XANTIA (X1)
 CITROEN XANTIA (X2)
 CITROEN XANTIA Break (X1)
 CITROEN XANTIA Break (X2)
 PEUGEOT 206 2 volumi /Coda spiovente (2A/C)
 PEUGEOT 206 CC (2D)

OE
 32736V

External Teeth, wheel side: 25
 Internal Teeth, wheel side: 34
 Length [mm]: 134,5
 Number of Teeth, ABS ring: 48
 Seal Diameter [mm]: 58
 Technical Information Number: Groove Type
 Inner
 Thread Size: M24X1,5

GI0713JM

Joint Kit, drive shaft



DACIA LOGAN (LS_)
 DACIA LOGAN EXPRESS (FS_)
 DACIA LOGAN II
 DACIA LOGAN MCV (KS_)
 DACIA LOGAN Pick-up (US_)
 DACIA SANDERO

OE
 8200499306

External Teeth, diff.side: 23
 Int. teeth, diff.side, conn.to transm.: 30
 Length [mm]: 120,7
 Seal Diameter [mm]: 36,3

GI0716JM

Joint Kit, drive shaft



DACIA LOGAN II
 DACIA LOGAN MCV II
 DACIA SANDERO II
 RENAULT LOGAN II
 RENAULT LOGAN II Station wagon (K8_)
 RENAULT THALIA II (LU1/2_)

OE
 391006553R
 8450009548

External Teeth, diff.side: 26
 Int. teeth, diff.side, conn.to transm.: 22
 Length [mm]: 168
 Seal Diameter [mm]: 40

GI0717JM

Joint Kit, drive shaft



DACIA DUSTER
 DACIA DUSTER Furgonato
 RENAULT CAPTUR
 RENAULT DUSTER
 RENAULT DUSTER (HM_)

OE
 3910100Q6B
 391017275R
 391019671R

External Teeth, diff.side: 27
 Int. teeth, diff.side, conn.to transm.: 33
 Length [mm]: 181,5
 Seal Diameter [mm]: 40

GI0718JM

Joint Kit, drive shaft



DACIA DUSTER
 DACIA DUSTER Furgonato
 NISSAN TERRANO
 RENAULT CAPTUR
 RENAULT DUSTER
 RENAULT DUSTER (HM_)

OE
 3910000Q5C
 3910000Q5F
 3910000Q6A
 391001162R
 391009882R

External Teeth, diff.side: 31
 Int. teeth, diff.side, conn.to transm.: 33
 Length [mm]: 133,5
 Seal Diameter [mm]: 42

Joints

GI0728JM
Joint Kit, drive shaft


DACIA LOGAN II
 DACIA LOGAN MCV II
 DACIA SANDERO II
 RENAULT LOGAN II
 RENAULT LOGAN II Station wagon (K8_)
 RENAULT THALIA II (LU1/2_)

OE
 391006553R
 391014946R

External Teeth, wheel side: 23
 Internal Teeth, wheel side: 22
 Length [mm]: 143
 Seal Diameter [mm]: 49
 Thread Size: M20X1,5

GI0729JM
Joint Kit, drive shaft


DACIA DUSTER
 DACIA DUSTER Furgonato
 NISSAN TERRANO
 RENAULT ARKANA I
 RENAULT CAPTUR
 RENAULT DUSTER

OE
 391001162R
 391008165R
 391019671R
 8200725503
 8200725504
 8200725510

External Teeth, wheel side: 25
 Internal Teeth, wheel side: 33
 Length [mm]: 149
 Seal Diameter [mm]: 52,6
 Technical Information Number: Groove Type
 Inner
 Thread Size: M20X1,5

GI0732JM
Joint Kit, drive shaft


DACIA LOGAN (LS_)
 DACIA SANDERO
 RENAULT LOGAN I (LS_)
 RENAULT SANDERO/STEPWAY I

OE
 600154702R
 8200272322
 8200698520

External Teeth, wheel side: 21
 Internal Teeth, wheel side: 24
 Length [mm]: 150
 Seal Diameter [mm]: 49
 Thread Size: M20X1,5

GI0738JM
Joint Kit, drive shaft


DACIA DUSTER
 DACIA DUSTER Furgonato
 RENAULT CAPTUR
 RENAULT DUSTER
 RENAULT DUSTER (HM_)

OE
 396004652R

External Teeth, diff.side: 21
 Int. teeth, diff.side, conn.to transm.: 28
 Length [mm]: 151
 Seal Diameter [mm]: 38

GI0749JM
Joint Kit, drive shaft


DACIA DUSTER
 DACIA DUSTER Furgonato
 RENAULT DUSTER

OE
 391016521R

External Teeth, diff.side: 26
 Int. teeth, diff.side, conn.to transm.: 33
 Length [mm]: 146,5
 Seal Diameter [mm]: 42,9

Joins

GI0761JM

Joint Kit, drive shaft



DACIA DUSTER
 DACIA DUSTER Furgonato
 RENAULT CAPTUR
 RENAULT DUSTER
 RENAULT DUSTER (HM_)

OE
 396004652R

External Teeth, wheel side: 25
 Internal Teeth, wheel side: 28
 Length [mm]: 148,5
 Number of Teeth, ABS ring: 48
 Seal Diameter [mm]: 52,2
 Technical Information Number: Groove Type
 Inner
 Thread Size: M20X1,5

GI0775JM

Joint Kit, drive shaft



RENAULT MEGANE II (BM0/1_, CM0/1_)
 RENAULT MEGANE II Cassone / Furgonato /
 Promiscuo (KM_)
 RENAULT MEGANE II Coupe-Cabriolet (EM0/1_)
 RENAULT MEGANE II Hatchback van (KM0/2_)
 RENAULT MEGANE II Station wagon (KM0/1_)

OE
 8200184199

External Teeth, wheel side: 23
 Internal Teeth, wheel side: 32
 Length [mm]: 148
 Seal Diameter [mm]: 49
 Technical Information Number: Groove Type
 Inner
 Thread Size: M20X1,5

GI0776JM

Joint Kit, drive shaft



RENAULT GRAND SCÉNIC II (JM0/1_)
 RENAULT MEGANE II (BM0/1_, CM0/1_)
 RENAULT SCÉNIC II (JM0/1_)

OE
 8200327707
 8200575489
 8200575490

External Teeth, wheel side: 25
 Internal Teeth, wheel side: 22
 Length [mm]: 143
 Seal Diameter [mm]: 52,6
 Technical Information Number: Groove Type
 Inner
 Thread Size: M20X1,5

GI0959JM

Joint Kit, drive shaft



AUDI A1 (8X1, 8XF)
 AUDI A1 Sportback (8XA, 8XK)
 AUDI A3 (8P1)
 AUDI A3 Sportback (8PA)
 AUDI Q3 (8U)
 AUDI TT (8J3)

OE
 5N0498103
 5N0498103X

External Teeth, diff.side: 40
 For OE number: 5N0498103
 Int. teeth, diff.side, conn.to transm.: 28
 Length [mm]: 104
 Seal Diameter [mm]: 46,9

GI0972JM

Joint Kit, drive shaft



AUDI 100 (44, 44Q, C3)
 AUDI 100 (4A, C4)
 AUDI 100 Avant (44, 44Q, C3)
 AUDI 100 Avant (4A, C4)
 AUDI 80 Avant (8C, B4)
 AUDI 90 (81, 85, B2)

OE
 3B0498103
 3B0498103X
 431407331H
 443498103
 443498103X
 811407331

Int. teeth, diff.side, conn.to transm.: 33
 Length [mm]: 32

Joins

GI0981JM

Joint Kit, drive shaft



AUDI A3 (8L1)
 AUDI TT (8N3)
 AUDI TT Roadster (8N9)
 SEAT LEON (1M1)
 SEAT TOLEDO II (1M2)
 SKODA OCTAVIA (1U2)

OE

150498099
 150498099A
 1J0407271PR
 1J0407272NG
 1J0407311
 1J0498099

External Teeth, wheel side: 36
 Internal Teeth, wheel side: 30
 Length [mm]: 129,5
 Seal Diameter [mm]: 53
 Technical Information Number: Groove Type
 Inner
 Thread Size: M20X1,5

GI0985JM

Joint Kit, drive shaft



AUDI 80 (81, 85, B2)
 AUDI 90 (81, 85, B2)
 AUDI COUPE (81, 85)
 SEAT CORDOBA (6K1, 6K2)
 SEAT CORDOBA Vario (6K5)
 SEAT IBIZA II (6K1)

OE

Thread Size: M20X1,5

GI0991JM

Joint Kit, drive shaft



AUDI A4 (8E2, B6)
 AUDI A4 (8EC, B7)
 AUDI A4 Avant (8E5, B6)
 AUDI A4 Avant (8ED, B7)
 AUDI A4 Cabriolet (8H7, B6, 8HE, B7)
 SEAT EXEO (3R2)

OE

Thread Size: M16X1,5

GI0992JM

Joint Kit, drive shaft



AUDI Q7 (4L)
 AUDI Q7 Van (4LB)
 PORSCHE CAYENNE
 VW TOUAREG (7P5)
 VW TOUAREG VAN (7P5)

OE

7P0498099
 7P0498099A
 7P0498099AX
 7P0498099B
 7P0498099BX
 7P0498099X

External Teeth, wheel side: 30
 Length [mm]: 166
 Seal Diameter [mm]: 64,4
 Technical Information Number: Groove Type
 Inner
 Thread Size: M24X1,5

GI0998JM

Joint Kit, drive shaft



MAN TGE Autobus (UY_)
 MAN TGE Furgonato (UY_)
 MAN TGE Pianale piatto/Telaio (UZ_)
 VW CRAFTER Autobus (SY_)
 VW CRAFTER Furgonato
 VW CRAFTER Pianale piatto/Telaio

OE

2N0498099A
 2N0498099AX

External Teeth, wheel side: 44
 Internal Teeth, wheel side: 31
 Length [mm]: 175
 Seal Diameter [mm]: 72,4
 Technical Information Number: Groove Type
 Inner
 Thread Size: M20X1,5

Joints

GI1066JM

Joint Kit, drive shaft



DACIA DUSTER
 DACIA DUSTER Furgonato
 NISSAN TERRANO
 RENAULT CAPTUR
 RENAULT DUSTER
 RENAULT DUSTER (HM_)

OE

3910000Q6A
 391009882R
 391017275R

External Teeth, wheel side: 25
 Internal Teeth, wheel side: 35
 Length [mm]: 149
 Seal Diameter [mm]: 52,6
 Technical Information Number: Groove Type
 Inner
 Thread Size: M20X1,5

GI1072JM

Joint Kit, drive shaft



NISSAN CUBE (Z10)
 NISSAN MICRA II (K11)

OE

391002U010
 391002U210
 391002U310
 3910041B10
 3910045B10
 391012U310

External Teeth, wheel side: 23
 Internal Teeth, wheel side: 19
 Length [mm]: 146,5
 Number of Teeth, ABS ring: 42
 Seal Diameter [mm]: 48
 Thread Size: M18X1,5

GI1081JM

Joint Kit, drive shaft



NISSAN JUKE (F15)

OE

391001KA0B
 391011KA0B
 C92111KA0B

External Teeth, wheel side: 29
 Internal Teeth, wheel side: 22
 Length [mm]: 161
 Seal Diameter [mm]: 56,2
 Technical Information Number: For European
 Thread Size: M24X1,5

GI2004JM

Joint Kit, drive shaft



LEXUS ES (_Z10_)
 LEXUS HS (ANF10)
 TOYOTA ALPHARD / VELLFIRE (GGH2_, ANH2_,
 ATH2_)
 TOYOTA CAMRY (_V7_, _VA7_, _VH7_)
 TOYOTA MARK X ZIO (GGA1_, ANA1_)

OE

4341033430
 4341042170
 4341042230
 4341042270
 4342042220
 4347039615

External Teeth, wheel side: 26
 Internal Teeth, wheel side: 27
 Length [mm]: 159
 Seal Diameter [mm]: 61,2
 Technical Information Number: Groove Type
 Inner
 Thread Size: M22X1,5

GI2006JM

Joint Kit, drive shaft



LEXUS ES (AVV6_, GSV6_, ASV6_)
 LEXUS RX (GYL1_, GGL15, AGL10)
 TOYOTA ALPHARD / VELLFIRE (GGH2_, ANH2_,
 ATH2_)
 TOYOTA CAMRY (MCV3_, ACV3_, _XV3_)
 TOYOTA CAMRY (_V7_, _VA7_, _VH7_)

OE

4303033040
 4303033041
 4303033080
 4303042040
 4303058011

External Teeth, diff.side: 24
 Int. teeth, diff.side, conn.to transm.: 27
 Length [mm]: 481,5
 Seal Diameter [mm]: 40

Joints

GI2018JM

Joint Kit, drive shaft



LEXUS ES (AVV6_, GSV6_, ASV6_)
 LEXUS NX (ZGZ1_, AGZ1_, AYZ1_)
 LEXUS RX (GYL1_, GGL15, AGL10)
 TOYOTA ALPHARD / VELLFIRE (GGH2_, ANH2_,
 ATH2_)
 TOYOTA AVENTIS VERSO (_CLM2_, _ACM2_)

OE

4304028010
 4304028011
 4304033050
 434200R130
 4342042220

External Teeth, diff.side: 24
 Int. teeth, diff.side, conn.to transm.: 27
 Joint Type: Tripot Joint
 Length [mm]: 177
 Seal Diameter [mm]: 50

GI2024JM

Joint Kit, drive shaft



LEXUS RX (MHU3_, GSU3_, MCU3_)
 TOYOTA ALPHARD (ATH1_, MNH1_, ANH1_)
 TOYOTA CALDINA (ZZT24_, ST24_, AZT24_)
 TOYOTA HARRIER (MCU3_, MHU3_, ACU3_,
 GSU3_)
 TOYOTA RAV 4 II (CLA2_, XA2_, ZCA2_, ACA2_)

OE

4304042020
 4304042021

External Teeth, diff.side: 23
 Int. teeth, diff.side, conn.to transm.: 17
 Length [mm]: 170,5
 Seal Diameter [mm]: 50

GI2029JM

Joint Kit, drive shaft



TOYOTA RAV 4 III (ACA3_, ACE_, ALA3_, GSA3_,
 ZSA3_)
 TOYOTA RAV 4 IV (ZSA4_, ALA4_)
 TOYOTA RAV 4 IV VAN (_A4_)

OE

4303042100

External Teeth, diff.side: 24
 Int. teeth, diff.side, conn.to transm.: 27
 Length [mm]: 493
 Seal Diameter [mm]: 34

GI2033JM

Joint Kit, drive shaft



TOYOTA AVENTIS
 TOYOTA AVENTIS (T25_)
 TOYOTA AVENTIS Station wagon (T25)
 TOYOTA AVENTIS Station wagon (ZRT27,
 ADT27)
 TOYOTA AVENTIS Tre volumi (T25)

OE

4304002050

External Teeth, diff.side: 24
 Int. teeth, diff.side, conn.to transm.: 26
 Joint Type: Tripot Joint
 Length [mm]: 176
 Seal Diameter [mm]: 50

GI2041JM

Joint Kit, drive shaft



LEXUS ES (_Z10_)
 LEXUS NX (ZGZ1_, AGZ1_, AYZ1_)
 TOYOTA ALPHARD / VELLFIRE (GGH2_, ANH2_,
 ATH2_)
 TOYOTA CAMRY (_V7_, _VA7_, _VH7_)
 TOYOTA MARK X Zio (GGA1_, ANA1_)

OE

4341042280
 4347049655
 4347049656
 4347049675
 4347049676
 4347049815

External Teeth, wheel side: 30
 Internal Teeth, wheel side: 27
 Length [mm]: 164
 Seal Diameter [mm]: 61,2
 Technical Information Number: Groove Type
 Inner
 Thread Size: M22X1,5

Joints

GI3012JM

Joint Kit, drive shaft



FORD GALAXY (WA6)
 FORD MONDEO IV (BA7)
 FORD MONDEO IV Tre volumi (BA7)
 FORD MONDEO IV Turnier (BA7)
 FORD S-MAX (WA6)
 VOLVO S60 II

OE
 36011289

External Teeth, wheel side: 40
 Internal Teeth, wheel side: 26
 Length [mm]: 115,5
 Seal Diameter [mm]: 57,4
 Thread Size: M10X1,5

GI4005JM

Joint Kit, drive shaft



HONDA CIVIC IX (FK)
 HONDA CIVIC VII Hatchback (EU, EP, EV)
 HONDA CIVIC VIII Hatchback (FN, FK)
 HONDA CIVIC VIII Tre volumi (FD, FA)
 HONDA FR-V (BE)
 HONDA HR-V (GH)

OE
 44310S0A300
 44310S2X300

External Teeth, diff.side: 27
 For OE number: 44310S0A300
 Int. teeth, diff.side, conn.to transm.: 30
 Length [mm]: 155,5
 Seal Diameter [mm]: 40

GI4006JM

Joint Kit, drive shaft



ACURA INTEGRA Tre volumi
 HONDA ACCORD IV (CB)
 HONDA ACCORD IV Aerodeck (CB)
 HONDA ACCORD IV Coupé (CB, CC)
 HONDA ACCORD VI Coupé (CG)
 HONDA ACCORD VII (CL)

OE
 44010S47000
 44010SX0000
 44011S47010
 44011SX1000
 44310S4X300
 44310S84A10

External Teeth, diff.side: 27
 Int. teeth, diff.side, conn.to transm.: 32
 Length [mm]: 155,5
 Seal Diameter [mm]: 70

GI4008JM

Joint Kit, drive shaft



HONDA ACCORD 2 volumi /Coda spiovente (TF)
 HONDA CR-V II (RD_)
 HONDA CR-V III (RE)
 HONDA CROSSTOUR

OE
 42320SCAE21
 42320SXSA01
 42320SXSA11

External Teeth, diff.side: 23
 Int. teeth, diff.side, conn.to transm.: 20
 Length [mm]: 163
 Seal Diameter [mm]: 35

GI4009JM

Joint Kit, drive shaft



HONDA ACCORD VII Tourer (CM)
 HONDA ACCORD VIII (CU)
 HONDA ACCORD VIII Station wagon
 HONDA CIVIC VI Coupé (EJ, EM1)
 HONDA CIVIC VII Hatchback (EU, EP, EV)
 HONDA CIVIC VIII Tre volumi (FD, FA)

OE
 44310S0A900
 44310S10901
 44310S10902
 44310TA0A00
 44310TL1305

External Teeth, diff.side: 27
 Int. teeth, diff.side, conn.to transm.: 30
 Length [mm]: 120,5
 Seal Diameter [mm]: 40

Joins

GI4012JM

Joint Kit, drive shaft



HONDA CITY Tre volumi
 HONDA CITY Tre volumi (GM)
 HONDA FIT ARIA
 HONDA JAZZ II (GD)
 HONDA JAZZ III (GE)
 HONDA JAZZ Tre volumi

OE

44014SELTOO
 44014SENP00
 44014TF0J00
 44014TF0J01
 44014TF0J02
 44305SABN10

External Teeth, wheel side: 26
 Internal Teeth, wheel side: 28
 Length [mm]: 133
 Seal Diameter [mm]: 52
 Thread Size: M22X1,5

GI4013JM

Joint Kit, drive shaft



HONDA ACCORD VIII (CU)
 HONDA ACCORD VIII Station wagon
 HONDA CR-V II (RD_)
 HONDA CR-V III (RE)
 HONDA CR-V IV (RE)
 HONDA CROSS TOUR

OE

44014STKA00
 44014STKA01
 44014STKA02
 44014STKA03
 44014SWY000
 44014SWY010

External Teeth, wheel side: 30
 Internal Teeth, wheel side: 34
 Length [mm]: 147,5
 Seal Diameter [mm]: 68
 Thread Size: M26X1,5

GI5000JM

Joint Kit, drive shaft



MITSUBISHI DELICA
 MITSUBISHI L 200 (K7_T, K6_T)
 MITSUBISHI L 400 / SPACE GEAR Autobus
 (PD_W, PC_W, PA_V, PB_V)
 MITSUBISHI L 400 Furgonato (PD_W, PC_W,
 PB_V, PA_W, PA_V)

OE

MB886682

Int. teeth, diff.side, conn.to transm.: 26
 Length [mm]: 62,5

GI5002JM

Joint Kit, drive shaft



MITSUBISHI DELICA
 MITSUBISHI L 200 (K3_T, K2_T, K1_T, K0_T)
 MITSUBISHI L 200 (K7_T, K6_T)
 MITSUBISHI L 300 Autobus (P0_W, P1_W, P2_W)
 MITSUBISHI L 300 Furgonato (P0_W, P1_W)
 MITSUBISHI L 400 / SPACE GEAR Autobus

OE

MB526147

Int. teeth, diff.side, conn.to transm.: 25
 Length [mm]: 68,6

GI5003JM

Joint Kit, drive shaft



MITSUBISHI COLT CZC Cabriolet (RG)
 MITSUBISHI COLT VI (Z3_A, Z2_A)
 SMART FORFOUR (454)

OE

3815A014

External Teeth, diff.side: 33
 Int. teeth, diff.side, conn.to transm.: 21
 Length [mm]: 169,5
 Seal Diameter [mm]: 34,9
 Transmission Type: Automatic Transmission
 Transmission Type: Manual Transmission

Joins

GI5006JM

Joint Kit, drive shaft



MITSUBISHI L 200 (K7_T, K6_T)
 MITSUBISHI L 200 (KB_T, KA_T)
 MITSUBISHI L 200 Pianale piatto/Telaio (KA_T, KB_T)
 MITSUBISHI L200 (KJ_)
 MITSUBISHI PAJERO SPORT II (KH_, KG_)

OE
 3815A183
 3817A313

External Teeth, diff.side: 28
 Int. teeth, diff.side, conn.to transm.: 33
 Length [mm]: 172
 Seal Diameter [mm]: 34,7

GI5018JM

Joint Kit, drive shaft



MITSUBISHI PAJERO IV (V8_W, V9_W)
 MITSUBISHI PAJERO IV Van (V90, V80)

OE
 3715A097
 3715A098
 3715A099

External Teeth, wheel side: 33
 Internal Teeth, wheel side: 43
 Length [mm]: 194,5
 Number of Teeth, ABS ring: 50
 Seal Diameter [mm]: 72
 Supplementary Article/Supplementary Info 2:
 With ABS sensor ring
 Technical Information Number: Groove Type
 Inner
 Thread Size: M26X1,5

GI6011JM

Joint Kit, drive shaft



DAIHATSU TERIOS (J2_)

OE
 43410B4010
 43420B4010

External Teeth, wheel side: 24
 Internal Teeth, wheel side: 22
 Length [mm]: 170,8
 Seal Diameter [mm]: 52
 Thread Size: M22X1,5

GI7001JM

Joint Kit, drive shaft



SUBARU FORESTER (SH)
 SUBARU IMPREZA 2 volumi /Coda spiovente
 (GR, GH, G3)
 SUBARU IMPREZA Tre volumi (GD, GG)
 SUBARU IMPREZA Tre volumi (GR)
 SUBARU LEGACY IV (BL, BP)

OE
 28391AJ000
 28391AJ001
 28391AJ002
 28391FJ020
 28393AG002

External Teeth, wheel side: 27
 For OE number: 28391AJ001
 Internal Teeth, wheel side: 30
 Length [mm]: 131
 Seal Diameter [mm]: 52
 Technical Information Number: Groove Type
 Inner
 Thread Size: M22X1,5

GI8003JM

Joint Kit, drive shaft



SUZUKI GRAND VITARA I (FT, GT)
 SUZUKI GRAND VITARA II (JT)

OE
 4411465J00
 4411465J01

External Teeth, diff.side: 26
 Int. teeth, diff.side, conn.to transm.: 22
 Length [mm]: 174,5
 Seal Diameter [mm]: 40

Joints

GI8004JM

Joint Kit, drive shaft



SUZUKI GRAND VITARA I (FT, GT)
SUZUKI GRAND VITARA II (JT)

OE
4411565J00

For OE number: 4411565J00
Int. teeth, diff.side, conn.to transm.: 24
Length [mm]: 73

GI8013JM

Joint Kit, drive shaft



SUZUKI GRAND VITARA I (FT, GT)

OE
4410167D01
4411467D01
4411467D50

External Teeth, diff.side: 26
Int. teeth, diff.side, conn.to transm.: 30
Length [mm]: 168
Seal Diameter [mm]: 35

GI8019JM

Joint Kit, drive shaft



SUZUKI GRAND VITARA I (FT, GT)
SUZUKI GRAND VITARA II (JT)

OE
4411765J00
4411778K00
4411865J00
4411878K00

External Teeth, wheel side: 28
Internal Teeth, wheel side: 22
Length [mm]: 140
Seal Diameter [mm]: 58,2
Technical Information Number: Groove Type Inner
Thread Size: M22X1,5

GI8028JM

Joint Kit, drive shaft



SUZUKI IGNIS (FH)
SUZUKI WAGON R+ (EM)

OE
4410276GK0

External Teeth, wheel side: 23
Internal Teeth, wheel side: 19
Length [mm]: 135
Seal Diameter [mm]: 49
Technical Information Number: with Rim protector
Thread Size: M20X1,5

GI9003JM

Joint Kit, drive shaft



AUDI Q3 (8U)
VW GOLF V (1K1)
VW GOLF V Variant (1K5)
VW JETTA III (1K2)
VW PASSAT (3C2)
VW PASSAT CC (357)

OE
3C0498103A
3C0498103AX
3C0498103D
3C0498103G
3C0498103GV
3C0498103GX

External Teeth, diff.side: 26
Int. teeth, diff.side, conn.to transm.: 34
Joint Type: Tripot Joint
Length [mm]: 157
Seal Diameter [mm]: 31

Joins

GI9004JM

Joint Kit, drive shaft



VW CALIFORNIA T5 Camper (7EC, 7EF, 7EG, 7HF)
 VW CALIFORNIA T6 Camper (SGC, SGG, SHC)
 VW MULTIVAN V (7HM, 7HN, 7HF, 7EF, 7EM, 7EN)
 VW MULTIVAN VI (SGF, SGM, SGN)
 VW TRANSPORTER V Autobus (7HB, 7HJ, 7EB,

OE

7H0407331
 7H0407331E
 7H0498103C
 7H0498103CX
 7H0498103E
 7H0498103EX

External Teeth, diff.side: 26
 Int. teeth, diff.side, conn.to transm.: 30
 Length [mm]: 109
 Seal Diameter [mm]: 42,5

GI9007JM

Joint Kit, drive shaft



SEAT CORDOBA (6K1, 6K2)
 SEAT CORDOBA (6K2)
 SEAT CORDOBA Vario (6K5)
 SEAT IBIZA II (6K1)
 SEAT IBIZA III (6K1)
 SEAT INCA (6K9)

OE

171407311K

External Teeth, wheel side: 22
 Internal Teeth, wheel side: 30
 Length [mm]: 130,5
 Seal Diameter [mm]: 50
 Technical Information Number: Groove Type
 Inner
 Thread Size: M20X1,5

GI9008JM

Joint Kit, drive shaft



VW CALIFORNIA T5 Camper (7EC, 7EF, 7EG, 7HF)
 VW CALIFORNIA T6 Camper (SGC, SGG, SHC)
 VW MULTIVAN V (7HM, 7HN, 7HF, 7EF, 7EM, 7EN)
 VW MULTIVAN VI (SGF, SGM, SGN)
 VW TRANSPORTER V Autobus (7HB, 7HJ, 7EB,

OE

7E0498099C
 7E0498099CX
 7E0498099F
 7E0498099FX
 7LA498099
 7LA498099C

External Teeth, wheel side: 38
 For OE number: 7E0498099C
 Internal Teeth, wheel side: 30
 Length [mm]: 170
 Seal Diameter [mm]: 63
 Technical Information Number: Groove Type
 Inner
 Thread Size: M20X1,5

GI9009JM

Joint Kit, drive shaft



AUDI A1 (8X1, 8XF)
 AUDI A1 Sportback (8XA, 8XK)
 AUDI A3 (8V1)
 AUDI A3 Cabriolet (8V7)
 AUDI A3 Limousine (8VS)
 AUDI A3 Limousine (8YS)

OE

5Q0598103
 5Q0598103X
 8V0598103
 8V0598103X

For OE number: 8V0598103
 Int. teeth, diff.side, conn.to transm.: 33
 Length [mm]: 32
 Technical Information Number: VL

GI9016JM

Joint Kit, drive shaft



AUDI A3 (8P1)
 AUDI A3 Sportback (8PA)
 AUDI A4 (8E2, B6)
 AUDI A4 (8EC, B7)
 AUDI A4 Avant (8E5, B6)
 AUDI A4 Avant (8ED, B7)

OE

6Q0498103E
 6QD498103
 6QD498103X

External Teeth, diff.side: 26
 Int. teeth, diff.side, conn.to transm.: 22
 Joint Type: Tripot Joint
 Length [mm]: 157
 Seal Diameter [mm]: 31

Joins

GI9017JM

Joint Kit, drive shaft



VW GOLF III (1H1)
 VW GOLF III Cabriolet (1E7)
 VW GOLF III Variant (1H5)
 VW GOLF IV Cabriolet (1E7)
 VW VENTO (1H2)

OE
 1H0407331E

Int. teeth, diff.side, conn.to transm.: 34
 Length [mm]: 59,2

GI9025JM

Joint Kit, drive shaft



VW DERBY (86C, 80)
 VW POLO (86C, 80)
 VW POLO CLASSIC (86C, 80)
 VW POLO Coupe (86C, 80)
 VW POLO Furgonato (86CF)

OE
 871407311
 871498099
 871498099A
 871498099AX
 871498099X

External Teeth, wheel side: 20
 Internal Teeth, wheel side: 30
 Length [mm]: 124,5
 Seal Diameter [mm]: 45,5
 Technical Information Number: Groove Type
 Inner
 Thread Size: M20X1,5

GI9027JM

Joint Kit, drive shaft



VW CALIFORNIA T5 Camper (7EC, 7EF, 7EG, 7HF)
 VW CALIFORNIA T6 Camper (SGC, SGG, SHC)
 VW MULTIVAN V (7HM, 7HN, 7HF, 7EF, 7EM, 7EN)
 VW MULTIVAN VI (SGF, SGM, SGN)
 VW TRANSPORTER V Autobus (7HB, 7HJ, 7EB,

OE
 7E0498099B
 7E0498099BX
 7E0498099E
 7E0498099EX
 7E0498099H
 7E0498099HX

External Teeth, wheel side: 38
 Internal Teeth, wheel side: 28
 Length [mm]: 167
 Seal Diameter [mm]: 63
 Technical Information Number: Groove Type
 Inner

GI9031JM

Joint Kit, drive shaft



JEEP CHEROKEE (KJ)

OE
 5066022AA
 5066023AA
 52111778AB
 52111780AB
 52111781AB

External Teeth, wheel side: 27
 Internal Teeth, wheel side: 35
 Length [mm]: 190
 Seal Diameter [mm]: 60
 Thread Size: M24X2

GI9032JM

Joint Kit, drive shaft



JEEP GRAND CHEROKEE IV (WK, WK2)
 JEEP GRAND CHEROKEE VAN (WK2)

OE
 4578884AB
 4578884AC
 4578885AC

External Teeth, wheel side: 32
 Internal Teeth, wheel side: 26
 Length [mm]: 176,5
 Seal Diameter [mm]: 72
 Thread Size: M22X1,5

Joins

GI9033JM

Joint Kit, drive shaft



JEEP GRAND CHEROKEE IV (WK, WK2)
JEEP GRAND CHEROKEE VAN (WK2)

OE

4578884AB
4578884AC

External Teeth, diff.side: 37
Int. teeth, diff.side, conn.to transm.: 24
Length [mm]: 401
Seal Diameter [mm]: 45

GIH102JM

Joint Kit, drive shaft



HYUNDAI CRETA
HYUNDAI ix35 (LM, EL, ELH)
KIA SPORTAGE (SL)

OE

496002Y000
49600M0000
496012Y000
49601M0000

External Teeth, wheel side: 27
Internal Teeth, wheel side: 20
Length [mm]: 147,5
Number of Teeth, ABS ring: 48
Seal Diameter [mm]: 62
Thread Size: M22X1,5

GIH104JM

Joint Kit, drive shaft



HYUNDAI ix35 (LM, EL, ELH)
HYUNDAI TUCSON (JM)
KIA CARENS III (UN)
KIA RIO II (JB)
KIA RIO II Tre volumi (JB)
KIA SPORTAGE (JE_, KM_)

OE

495002S300
495002Y300
495002Y900
495012F060
495012Y900
495921F200

External Teeth, diff.side: 27
Int. teeth, diff.side, conn.to transm.: 24
Length [mm]: 161,5
Seal Diameter [mm]: 41

GIH107JM

Joint Kit, drive shaft



HYUNDAI ATOS (MX)
HYUNDAI ATOS PRIME (MX)

OE

4950005100

External Teeth, diff.side: 22
Int. teeth, diff.side, conn.to transm.: 20
Length [mm]: 138
Seal Diameter [mm]: 35

GIH110JM

Joint Kit, drive shaft



HYUNDAI i10 (PA)
HYUNDAI i30 (FD)
HYUNDAI i30 CW (FD)
KIA CERATO (LD)
KIA CERATO II (TD)
KIA CERATO KOUP (TD)

OE

495001G011
495001G051
495362L001
495921G090
495921G190

External Teeth, diff.side: 25
Int. teeth, diff.side, conn.to transm.: 22
Length [mm]: 155,5
Seal Diameter [mm]: 41

Joists

GIH112JM

Joint Kit, drive shaft

HYUNDAI GETZ (TB)



OE

495001C000
495001C010
495051CA00

External Teeth, diff.side: 25
Int. teeth, diff.side, conn.to transm.: 19
Length [mm]: 139,5
Seal Diameter [mm]: 35

GIH114JM

Joint Kit, drive shaft

HYUNDAI ACCENT III (MC)
HYUNDAI ACCENT III Tre volumi (MC)
HYUNDAI TUCSON (JM)
HYUNDAI TUCSON Cassone/SUV (JM)
KIA SPORTAGE (JE_, KM_)



OE

495012E910
495052EA20
495052EA90
495052EJ10
495052HA00

External Teeth, diff.side: 27
Int. teeth, diff.side, conn.to transm.: 33
Length [mm]: 168,5
Seal Diameter [mm]: 41

GIH115JM

Joint Kit, drive shaft

KIA RIO III (UB)
KIA RIO III Hatchback Van (UB)
KIA RIO III Tre volumi (UB)



OE

495821W100

External Teeth, diff.side: 25
Int. teeth, diff.side, conn.to transm.: 30
Length [mm]: 149,5
Seal Diameter [mm]: 41

GIH116JM

Joint Kit, drive shaft

KIA CARENS II (FJ)
KIA CARENS III (UN)
KIA CERATO (LD)
KIA CERATO Tre volumi (LD)
KIA SPORTAGE (JE_, KM_)
KIA SPORTAGE (K00)



OE

495921D200
495922F500

External Teeth, diff.side: 27
Int. teeth, diff.side, conn.to transm.: 24
Length [mm]: 162
Seal Diameter [mm]: 41
Technical Information Number: Non-Original design

GIH123JM

Joint Kit, drive shaft

HYUNDAI GETZ (TB)
HYUNDAI SANTA FÉ I (SM)
HYUNDAI TUCSON (JM)



OE

4950526A00

External Teeth, diff.side: 27
Int. teeth, diff.side, conn.to transm.: 23
Length [mm]: 155
Seal Diameter [mm]: 41

Joins

GIH125JM

Joint Kit, drive shaft



HYUNDAI ix35 (LM, EL, ELH)
KIA CARNIVAL / GRAND CARNIVAL III (VQ)
KIA CARNIVAL II (GQ)
KIA MAGENTIS (MG)
KIA SPORTAGE (SL)

OE

495922Y050
495923R900
495972G503
495972S000

External Teeth, diff.side: 28
Int. teeth, diff.side, conn.to transm.: 25
Length [mm]: 120
Seal Diameter [mm]: 44,1

GIH126JM

Joint Kit, drive shaft



HYUNDAI COUPE (GK)
HYUNDAI TIBURON Coupé
HYUNDAI TUCSON (JM)
HYUNDAI TUCSON Cassone/SUV (JM)
KIA SPORTAGE (JE_, KM_)

OE

495002E550
495052CA40
495052EA00

External Teeth, diff.side: 26
For OE number: 495002E550
Int. teeth, diff.side, conn.to transm.: 25
Length [mm]: 108
Seal Diameter [mm]: 42

GIH131JM

Joint Kit, drive shaft



HYUNDAI COUPE (RD)
HYUNDAI ELANTRA (XD)
HYUNDAI ELANTRA Tre volumi (XD)
HYUNDAI LANTRA II (J-2)
HYUNDAI LANTRA II Wagon (J-2)
HYUNDAI MATRIX (FC)

OE

4950117050
4950517A00
4950529A00

External Teeth, diff.side: 25
Int. teeth, diff.side, conn.to transm.: 30
Length [mm]: 150,5
Seal Diameter [mm]: 35

GIH134JM

Joint Kit, drive shaft



KIA PICANTO (BA)
KIA PICANTO (TA)

OE

495001Y000
495001Y010
495001Y210
495011Y010
495011Y210

External Teeth, wheel side: 24
For OE number: 495011Y010
Internal Teeth, wheel side: 20
Length [mm]: 138,5
Number of Teeth, ABS ring: 48
Seal Diameter [mm]: 52,5
Thread Size: M20X1,5

GIH137JM

Joint Kit, drive shaft



HYUNDAI i10 (PA)

OE

495000X100
495000X110
495000X204
495000X210
495000X214
495000X300

External Teeth, wheel side: 24
Internal Teeth, wheel side: 20
Length [mm]: 149,5
Number of Teeth, ABS ring: 48
Seal Diameter [mm]: 52,5
Thread Size: M20X1,5

Joins

GIH140JM

Joint Kit, drive shaft



HYUNDAI ELANTRA Tre volumi (HD)
HYUNDAI ELANTRA Tre volumi (MD, UD)
HYUNDAI i30 (FD)
HYUNDAI i30 (GD)
HYUNDAI i30 (PDE)
HYUNDAI i30 Coupé

OE

495001M010
49500A6300
495011M010
495012H012
495013X000
495013X010

External Teeth, wheel side: 27
Internal Teeth, wheel side: 22
Length [mm]: 149
Number of Teeth, ABS ring: 46
Seal Diameter [mm]: 60
Thread Size: M22X1,5

GIH144JM

Joint Kit, drive shaft



HYUNDAI i10 (PA)

OE

495000X000
495000X200

External Teeth, wheel side: 24
Internal Teeth, wheel side: 20
Length [mm]: 149,5
Seal Diameter [mm]: 52,5
Thread Size: M20X1,5

GIH147JM

Joint Kit, drive shaft



HYUNDAI TUCSON (JM)
KIA MAGENTIS (MG)
KIA SPORTAGE (JE_, KM_)
KIA SPORTAGE (K00)

OE

495012E900
495082EJ00

External Teeth, wheel side: 27
Internal Teeth, wheel side: 25
Length [mm]: 155
Number of Teeth, ABS ring: 48
Seal Diameter [mm]: 62,2
Thread Size: M22X1,5

GIH148JM

Joint Kit, drive shaft



HYUNDAI ix35 (LM, EL, ELH)
HYUNDAI ix35 Van
HYUNDAI TUCSON
KIA SPORTAGE (QL)
KIA SPORTAGE (SL)

OE

495002S000
495002S100
495002Y010
495012S101
495012Y060

External Teeth, wheel side: 30
Internal Teeth, wheel side: 25
Length [mm]: 158
Number of Teeth, ABS ring: 48
Seal Diameter [mm]: 62,00
Technical Information Number: Groove Type
Middle
Thread Size: M22X1,5

GIH150JM

Joint Kit, drive shaft



HYUNDAI i20 (PB, PBT)

OE

495251J001
495261J001
495261J002

External Teeth, wheel side: 25
Internal Teeth, wheel side: 21
Length [mm]: 149,5
Number of Teeth, ABS ring: 48
Seal Diameter [mm]: 52,5
Thread Size: M22X1,5

Joins

GIH152JM

Joint Kit, drive shaft



HYUNDAI ACCENT Tre volumi (HC)
 KIA RIO III (UB)
 KIA RIO III Hatchback Van (UB)
 KIA RIO III Tre volumi (UB)

OE

495801W200
 495801W400
 495811W200
 495811W300
 495811W400

External Teeth, wheel side: 25
 Internal Teeth, wheel side: 22
 Length [mm]: 148,5
 Number of Teeth, ABS ring: 48
 Seal Diameter [mm]: 52,5
 Thread Size: M22X1,5

GIH159JM

Joint Kit, drive shaft



HYUNDAI ELANTRA Coupé
 HYUNDAI ELANTRA Tre volumi (AD)
 HYUNDAI ELANTRA Tre volumi (HD)
 HYUNDAI i30 (FD)
 HYUNDAI i30 (GD)
 HYUNDAI i30 (PDE)

OE

495002H002
 495002H010
 495002H011
 495002L000
 495012H002
 495012H011

External Teeth, wheel side: 27
 Internal Teeth, wheel side: 22
 Length [mm]: 149
 Number of Teeth, ABS ring: 46
 Seal Diameter [mm]: 60
 Thread Size: M22X1,5

GIH163JM

Joint Kit, drive shaft



HYUNDAI COUPE (GK)
 HYUNDAI ELANTRA (XD)
 HYUNDAI ELANTRA Tre volumi (XD)
 HYUNDAI MATRIX (FC)

OE

495002D000
 495002D012
 495012C800
 495012D000
 495012D001
 495012D012

External Teeth, wheel side: 25
 Internal Teeth, wheel side: 23
 Length [mm]: 156
 Number of Teeth, ABS ring: 44
 Seal Diameter [mm]: 50
 Thread Size: M22X1,5

GIK111JM

Joint Kit, drive shaft



KIA RIO III (UB)
 KIA RIO III Hatchback Van (UB)
 KIA RIO III Tre volumi (UB)

OE

495801W000
 495801W010
 495811W000

External Teeth, wheel side: 25
 Internal Teeth, wheel side: 20
 Length [mm]: 145,5
 Number of Teeth, ABS ring: 48
 Seal Diameter [mm]: 52,6
 Thread Size: M22X1,5

GIS02JM

Joint Kit, drive shaft



SSANGYONG ACTYON
 SSANGYONG ACTYON I
 SSANGYONG ACTYON II
 SSANGYONG ACTYON SPORTS I (QJ)
 SSANGYONG ACTYON SPORTS II
 SSANGYONG KYRON

OE

4130009000
 4130009002

External Teeth, diff.side: 27
 Int. teeth, diff.side, conn.to transm.: 34
 Length [mm]: 130,5
 Seal Diameter [mm]: 47,7

Joins

GIS03JM
Joint Kit, drive shaft

 SSANGYONG ACTYON I
 SSANGYONG ACTYON SPORTS I (QJ)
 SSANGYONG KYRON
 SSANGYONG REXTON (GAB_)
 SSANGYONG REXTON W

OE

 4130009204
 4130009213
 4130009214

 External Teeth, wheel side: 28
 Internal Teeth, wheel side: 24
 Length [mm]: 175
 Seal Diameter [mm]: 60
 Thread Size: M24X1,5

Mounting

KK-0013JM
Wheel Bearing Kit

 BMW 3 (E30)
 BMW 3 Cabriolet (E30)
 BMW 3 Compact (E36)
 BMW 3 Touring (E30)

OE

 115204
 116002540108
 30520278
 33411130617
 33412220987
 8942765

 Inner Diameter [mm]: 42
 Outer Diameter [mm]: 75
 Width [mm]: 37

KK-0018JM
Wheel Hub

 BMW 1 (E81)
 BMW 1 (E87)
 BMW 1 Cabriolet (E88)
 BMW 1 Coupé (E82)
 BMW 3 (E90)
 BMW 3 Cabriolet (E93)

OE

 31216765157
 31222405866

 Flange [mm]: 147
 Rim Hole Number: 5
 Supplementary Article/Supplementary Info 2:
 With integrated ABS sensor

KK-0027JM
Wheel Hub

 BMW 3 (E30)
 BMW 3 Cabriolet (E30)
 BMW 3 Touring (E30)
 BMW Z1

OE

 31211128569
 31211129576
 31211131297

 Flange [mm]: 120
 Rim Hole Number: 4
 Supplementary Article/Supplementary Info 2:
 With ABS sensor ring

KK-0048JM
Wheel Hub

 CITROEN C5 III (RD_)
 CITROEN C5 III Break (TD_)
 CITROEN C6 (TD_)

OE

 1607704380
 1623942480
 374882
 374886
 374887
 378484

 For OE number: 1607704380
 Inner Diameter 2 [mm]: 32
 Inner Diameter [mm]: 32
 Number of Teeth, ABS ring: 96
 Outer Diameter [mm]: 128
 Rim Hole Number: 5
 Supplementary Article/Supplementary Info 2:
 With integrated ABS sensor
 Thread Size: M12X1,25

Mounting

KK-0069JM

Wheel Hub



BMW 5 (E28)
BMW 6 (E24)

OE

1124439
1130530
1131298
31211123435
31211124439
31211124440

Fitting Position: Front Axle Left
Fitting Position: Front Axle Right
Inner Diameter 2 [mm]: 37
Inner Diameter [mm]: 37
Number of Teeth, ABS ring: 96
Outer Diameter [mm]: 139
Rim Hole Number: 5
Supplementary Article/Supplementary Info 2:
With ABS sensor ring
Thread Size: M12X1,5

KK-0074JM

Wheel Hub



BMW 1 (F40)
BMW 2 Active Tourer (F45)
BMW 2 Active Tourer Van (F45)
BMW 2 Gran Coupe (F44)
BMW 2 Gran Tourer (F46)
BMW 2 Gran Tourer Van (F46)

OE

31206852091
31206867260
31206876844
31206877562
33406887548
33406891921

Flange [mm]: 143
Rim Hole Number: 5

KK-0099JM

Wheel Hub



BMW 5 (E39)

OE

31222228830
31222229360

Outer Diameter [mm]: 139
Rim Hole Number: 5
Thread Size: M12X1,5

KK-0102JM

Wheel Bearing Kit



CITROEN AX (ZA-)
CITROEN C15 (VD-)
CITROEN C15 Pick-up (VDPD)
CITROEN C15 Station wagon
CITROEN SAXO (S0, S1)
CITROEN VISA

OE

332631
335017
95654076

Inner Diameter [mm]: 35
Outer Diameter [mm]: 72
Width [mm]: 33

KK-0109JM

Wheel Hub



CITROEN XSARA (N1)
CITROEN XSARA Break (N2)
CITROEN XSARA Coupe (N0)
CITROEN XSARA Furgonato

OE

370159
374832
96082045

For OE number: 370159
Inner Diameter 2 [mm]: 25
Inner Diameter [mm]: 25
Number of Teeth, ABS ring: 29
Outer Diameter [mm]: 128
Rim Hole Number: 4
Supplementary Article/Supplementary Info 2:
With ABS sensor ring
Thread Size: M12X1,25

Mounting

KK-0116JM

Wheel Hub



OPEL ADAM
OPEL CORSA D
OPEL CORSA D Van
OPEL CORSA E
OPEL CORSA E Van

OE

1604017
1604018
1604358
420004
51787397
55701518

Flange [mm]: 120
Rim Hole Number: 4
Supplementary Article/Supplementary Info 2:
With integrated ABS sensor

KK-0119JM

Wheel Bearing Kit



LEXUS RX (MCU15)

OE

9008036021
9008036078
9036943008
9036943009

Inner Diameter [mm]: 43
Outer Diameter [mm]: 82
Width [mm]: 45

KK-0126JM

Wheel Bearing Kit



CHEVROLET AVEO 2 volumi /Coda spiovente (T250, T255)
CHEVROLET AVEO Tre volumi (T200)
CHEVROLET AVEO Tre volumi (T250, T255)
CHEVROLET KALOS
CHEVROLET KALOS Tre volumi

OE

95903586
96471773
96471775

Flange [mm]: 125
Rim Hole Number: 4
Supplementary Article/Supplementary Info 2:
with flange

KK-0134JM

Wheel Bearing Kit



MERCEDES-BENZ SPRINTER 2-t Autobus (901, 902)
MERCEDES-BENZ SPRINTER 2-t Furgonato (901, 902)
MERCEDES-BENZ SPRINTER 2-t Pianale piatto/Telaio (901, 902)

OE

0019806202
0019806302
0019807202
0039811005
0039811505
0039819505

Inner Diameter 1 [mm]: 25,0
Inner Diameter 2 [mm]: 41,3
Outer Diameter 1 [mm]: 52,0
Outer Diameter 2 [mm]: 73,4
Supplementary Article/Supplementary Info 2:
With shaft oil seal
Width 1 [mm]: 22,0
Width 2 [mm]: 20,0

KK-0143JM

Wheel Bearing Kit



MERCEDES-BENZ CLASSE G (W460)
MERCEDES-BENZ CLASSE G (W461)

OE

0009804202
0009808202
0089815705
0089815805
113517185
113517185C

Fitting Position: Front Axle Left
Fitting Position: Front Axle Right
Inner Diameter 1 [mm]: 40,988
Inner Diameter 2 [mm]: 45,987
Outer Diameter 1 [mm]: 67,975
Outer Diameter 2 [mm]: 74,976
Width 1 [mm]: 18
Width 2 [mm]: 18

Mounting

KK-0150JM

Wheel Hub



OPEL ASTRA G 2 volumi /Coda spiovente (F48, F08,_)
 OPEL ASTRA G Cabriolet (F67)
 OPEL ASTRA G CLASSIC (T98)
 OPEL ASTRA G CLASSIC Caravan (F35)
 OPEL ASTRA G CLASSIC Tre volumi (T98)

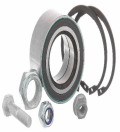
OE

13123485
 1603208
 90538939
 9117619

For OE number: 13123485
 Number of Teeth: 33
 Outer Diameter [mm]: 119
 Rim Hole Number: 4
 Thread Size: M12X1,5

KK-0158JM

Wheel Bearing Kit



AUDI 100 (43, C2)
 AUDI 100 (44, 44Q, C3)
 AUDI 100 (C1)
 AUDI 100 Avant (43, C2)
 AUDI 100 Avant (44, 44Q, C3)
 AUDI 200 (43)

OE

431498625
 443498625

Inner Diameter [mm]: 42
 Outer Diameter [mm]: 75,1
 Width [mm]: 37

KK-0168JM

Wheel Bearing Kit



CITROEN JUMPER Autobus (230P)
 CITROEN JUMPER Furgonato (230L)
 CITROEN JUMPER Pianale piatto/Telaio (230)
 FIAT DUCATO Autobus (230)
 FIAT DUCATO Furgonato (230L)
 FIAT DUCATO Pianale piatto/Telaio (230)

OE

000720032206
 0019811505
 0019816105
 0019816505
 0029801302
 0079817605

Inner Diameter 1 [mm]: 30,0
 Inner Diameter 2 [mm]: 40
 Outer Diameter 1 [mm]: 62,0
 Outer Diameter 2 [mm]: 75
 Supplementary Article/Supplementary Info 2:
 With shaft oil seal
 Width 1 [mm]: 21,3
 Width 2 [mm]: 26

KK-0197JM

Wheel Bearing Kit



IVECO DAILY Cassone / Furgonato / Promiscuo
 IVECO DAILY CITYS Autobus
 IVECO DAILY I Autobus
 IVECO DAILY I Cassone / Furgonato / Promiscuo
 IVECO DAILY I Pianale piatto/Telaio
 IVECO DAILY I Ribaltabile

OE

42558516
 43210LC42A
 46393024
 503644252
 5801341551
 7180066

Inner Diameter [mm]: 55
 Outer Diameter [mm]: 90
 Width [mm]: 60

KK-0216JM

Wheel Bearing Kit



CITROEN JUMPER Pianale piatto/Telaio (244)
 FIAT DUCATO Autobus (244, Z_)
 FIAT DUCATO Furgonato (244)
 FIAT DUCATO Pianale piatto/Telaio (244)
 PEUGEOT BOXER Autobus (244, Z_)
 PEUGEOT BOXER Furgonato

OE

1346650080
 1606374980
 332669

Inner Diameter [mm]: 55
 Outer Diameter [mm]: 90
 Width [mm]: 60

Mounting

KK-0220JM

Wheel Hub



OPEL ASTRA G 2 volumi /Coda spiovente (F48, F08_)
 OPEL ASTRA G Cabriolet (F67)
 OPEL ASTRA G CLASSIC (T98)
 OPEL ASTRA G CLASSIC Caravan (F35)
 OPEL ASTRA G CLASSIC Tre volumi (T98)

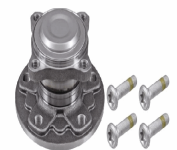
OE

09117621
 13123487
 1603210
 90575809
 9117621

For OE number: 13123487
 Number of Teeth: 33
 Outer Diameter [mm]: 137
 Rim Hole Number: 5
 Thread Size: M12X1,5

KK-0221JM

Wheel Hub



MINI MINI (F56)
 MINI MINI Cabriolet (F57)

OE

33416852156
 33416867927

Outer Diameter [mm]: 143
 Rim Hole Number: 5

KK-0222JM

Wheel Hub



CITROEN XSARA (N1)
 CITROEN XSARA Break (N2)
 CITROEN XSARA Cassone / coda spiovente
 CITROEN XSARA Coupe (N0)
 CITROEN XSARA Furgonato
 CITROEN ZX Break (N2)

OE

370160
 374831
 374845
 96142932

For OE number: 9225037
 Inner Diameter 2 [mm]: 25
 Inner Diameter [mm]: 25
 Number of Teeth, ABS ring: 29
 Outer Diameter [mm]: 128
 Rim Hole Number: 4
 Supplementary Article/Supplementary Info 2:
 With ABS sensor ring
 Thread Size: M12X1,25

KK-0231JM

Wheel Hub



OPEL AMPERA-E (F17)
 OPEL ASTRA K
 OPEL ASTRA K Cassone / coda spiovente
 OPEL ASTRA K Cassone / Furgonato / Promiscuo
 OPEL ASTRA K Sports Tourer

OE

13510543
 13517459
 13580304

Number of Teeth: 33
 Outer Diameter [mm]: 102
 Rim Hole Number: 5
 Supplementary Article/Supplementary Info 2:
 With integrated ABS sensor
 Supplementary Article/Supplementary Info:
 With accessories

KK-0239JM

Wheel Bearing Kit



OPEL MOVANO Combi (J9)
 OPEL MOVANO Furgonato (F9)
 OPEL MOVANO Pianale piatto/Telaio (U9, E9)

OE

4501155
 7701205417
 9161455

Inner Diameter [mm]: 45,3
 Outer Diameter [mm]: 80
 Width [mm]: 48

Mounting

KK-0269JM

Wheel Bearing Kit



MERCEDES-BENZ CLASSE G (W461)
 MERCEDES-BENZ CLASSE G (W463)
 MERCEDES-BENZ CLASSE G Cabrio (W463)
 MERCEDES-BENZ SPRINTER 4-t Furgonato (904)
 MERCEDES-BENZ SPRINTER 4-t Pianale
 piatto/Telaio (904)

OE

0029811205
 0069814505
 0099814105
 0099814505
 0099814805
 0099816005

Inner Diameter 1 [mm]: 50,0
 Inner Diameter 2 [mm]: 55,0
 Outer Diameter 1 [mm]: 80,0
 Outer Diameter 2 [mm]: 90,0
 Supplementary Article/Supplementary Info 2:
 With shaft oil seal
 Width 1 [mm]: 20,0
 Width 2 [mm]: 23,0

KK-0271JM

Wheel Hub



CITROEN XSARA (N1)
 CITROEN XSARA Break (N2)
 CITROEN XSARA Cassone / coda spiovente
 CITROEN XSARA Coupe (N0)
 CITROEN XSARA Furgonato
 PEUGEOT 306 (7B, N3, N5)

OE

374837

Flange [mm]: 128
 Rim Hole Number: 4
 Supplementary Article/Supplementary Info 2:
 With ABS sensor ring

KK-0289JM

Wheel Bearing Kit



FIAT LINEA (323)
 FIAT TEMPRA (159)
 FIAT TEMPRA S.W. (159)
 FIAT TIPO (160)
 LANCIA DEDRA (835)
 LANCIA DEDRA SW (835)

OE

46423871
 46528566
 46773659
 5890990
 755466
 7555466

Inner Diameter [mm]: 35
 Outer Diameter [mm]: 72
 Width [mm]: 33

KK-0291JM

Wheel Bearing Kit



MERCEDES-BENZ 190 (W201)
 MERCEDES-BENZ CABRIOLET (A124)
 MERCEDES-BENZ CLASSE C (W202)
 MERCEDES-BENZ CLASSE C (W203)
 MERCEDES-BENZ CLASSE C Coupe (CL203)
 MERCEDES-BENZ CLASSE C Station wagon

OE

0009800316
 0019810427
 1243500749
 1293500049
 1299800016
 1299800116

Inner Diameter [mm]: 45
 Outer Diameter [mm]: 84
 Width [mm]: 39

KK-0292JM

Wheel Hub



DODGE JOURNEY

OE

04779797AB
 4779797AA
 4779797AB

For OE number: 04779797AB
 Number of Teeth, ABS ring: 86
 Outer Diameter [mm]: 162
 Rim Hole Number: 5
 Supplementary Article/Supplementary Info 2:
 With integrated ABS sensor
 Thread Size: M12X1,5

Mounting

KK-0293JM
Wheel Hub


RENAULT 18 (134_)
 RENAULT 18 Variable (135_)
 RENAULT 21 (B48_)
 RENAULT 21 Furgonato (S48_)
 RENAULT 21 Station wagon (K48_)
 RENAULT 21 Tre volumi (L48_)

OE

7700803928
 7700803929
 7701204667
 7704002262
 7704002263

Inner Diameter 2 [mm]: 25
 Inner Diameter [mm]: 25
 Outer Diameter [mm]: 133
 Rim Hole Number: 4
 Thread Size: M12X1,5

KK-0294JM
Wheel Bearing Kit


AUDI 50 (86)

OE

861498625
 867407625A
 871498625A

Inner Diameter [mm]: 34
 Outer Diameter [mm]: 62
 Width [mm]: 37

KK-0295JM
Wheel Bearing Kit


FIAT BRAVA (182)
 FIAT BRAVO I (182)
 FIAT MAREA (185)
 FIAT MAREA Weekend (185)
 FIAT PUNTO (176)
 FIAT PUNTO (188)

OE

46423871
 46528566
 46773659
 71714468
 755466
 7555466

Inner Diameter [mm]: 35
 Outer Diameter [mm]: 72
 Width [mm]: 33

KK-0296JM
Wheel Hub


CHEVROLET CRUZE (J300)
 CHEVROLET CRUZE 2 volumi /Coda spiovente (J305)
 CHEVROLET CRUZE Station Wagon (J308)
 CHEVROLET ORLANDO (J309)
 CHEVROLET VOLT

OE

11547142
 11548714
 13398836
 13507016
 13526966
 13598355

Number of Teeth, ABS ring: 96
 Number of Teeth: 30
 Outer Diameter [mm]: 146
 Rim Hole Number: 5

KK-0301JM
Wheel Hub


AUDI A6 (4F2, C6)
 AUDI A6 Allroad (4FH, C6)
 AUDI A6 Avant (4F5, C6)
 AUDI A8 (4D2, 4D8)
 AUDI A8 (4E_)
 AUDI R8

OE

3D0498607
 3D0498607A
 4E0407613
 4E0407613C
 4E0407625D
 4E0498625A

Number of Teeth, ABS ring: 96
 Outer Diameter [mm]: 131
 Rim Hole Number: 5
 Supplementary Article/Supplementary Info 2:
 with flange
 Supplementary Article/Supplementary Info 2:
 With integrated ABS sensor
 Thread Size: M14X1,5

Mounting

KK-0306JM
Wheel Bearing Kit


FORD ESCORT '91 Express (AVL)
 FORD ESCORT '95 Furgonato (AVL)
 FORD ESCORT V Station wagon (GAL, AVL)
 FORD ESCORT VI (GAL)
 FORD ESCORT VII Station wagon (GAL, ANL)

OE
 1591389
 5024251
 81AB1215A
 81AB1215AB

Inner Diameter [mm]: 35,0
 Outer Diameter [mm]: 60,0
 Supplementary Article/Supplementary Info 2:
 With shaft oil seal
 Width [mm]: 16,0

KK-0307JM
Wheel Hub


RENAULT KANGOO (KC0/1_)

OE
 7701205499

Flange [mm]: 132,8
 Rim Hole Number: 4
 Supplementary Article/Supplementary Info 2:
 With ABS sensor ring

KK-0310JM
Wheel Bearing Kit


ALFA ROMEO 145 (930)
 ALFA ROMEO 146 (930)
 ALFA ROMEO 155 (167)
 ALFA ROMEO 164 (164)
 ALFA ROMEO GTV (916C_)
 ALFA ROMEO SPIDER (916S_)

OE
 46421951
 60510366
 60807717
 60810368
 60811569
 60815882

Inner Diameter [mm]: 42
 Outer Diameter [mm]: 80
 Width [mm]: 37

KK-0317JM
Wheel Hub


JAGUAR XF (_J05_, CC9)
 JAGUAR XF SPORTBRAKE (CC9)
 JAGUAR XJ (X350, X358)
 JAGUAR XJ (X35_, _J12_, _J24_)

OE
 1W832B663AA
 3R832B663AB
 3R832B663BA
 C2C10367
 C2C1064
 C2C1141

Number of Teeth, ABS ring: 92
 Outer Diameter [mm]: 139
 Rim Hole Number: 5
 Supplementary Article/Supplementary Info 2:
 With integrated ABS sensor
 Thread Size: M12X1,5

KK-0320JM
Wheel Bearing Kit


CITROEN XM (Y4)
 CITROEN XM Break (Y4)
 PEUGEOT 605 (6B)
 PEUGEOT 607 (9D, 9U)

OE
 335031

Inner Diameter [mm]: 45
 Outer Diameter [mm]: 84
 Width [mm]: 39

Mounting

KK-0344JM

Wheel Bearing Kit



MERCEDES-BENZ CLASSE V (638/2)
 MERCEDES-BENZ CLASSE V Furgonato (638/2)
 MERCEDES-BENZ VITO Autobus (638)
 MERCEDES-BENZ VITO Furgonato (638)

OE
 2109810127
 6389810027

Inner Diameter [mm]: 45
 Outer Diameter [mm]: 84
 Width [mm]: 39

KK-0347JM

Wheel Hub



MERCEDES-BENZ CLA Coupé (C117)
 MERCEDES-BENZ CLA Shooting Brake (X117)
 MERCEDES-BENZ CLASSE A (W176)
 MERCEDES-BENZ CLASSE B (W245)
 MERCEDES-BENZ CLASSE B (W246, W242)
 MERCEDES-BENZ CLASSE GLA (X156)

OE
 2463340006

Flange [mm]: 143
 Rim Hole Number: 5
 Supplementary Article/Supplementary Info 2:
 With integrated ABS sensor

KK-0354JM

Wheel Hub



FORD TOURNEO CONNECT / GRAND TOURNEO
 CONNECT MPV / Spac
 FORD TOURNEO CUSTOM Autobus
 FORD TRANSIT Autobus
 FORD TRANSIT CUSTOM Autobus
 FORD TRANSIT CUSTOM Furgonato

OE
 1763851
 1861068
 2207478
 2219721
 2514446
 2622841

Fitting Position: Rear Axle
 Flange [mm]: 198,5
 For OE number: 1763851
 Rim Hole Number: 5

KK-0363JM

Wheel Hub



VOLVO C70 I Cabriolet
 VOLVO C70 I Coupé
 VOLVO S70 (LS)
 VOLVO V70 I (LV)
 VOLVO XC70 CROSS COUNTRY

OE
 2424565
 272456
 2724560
 2724565
 274324
 2743240

Flange [mm]: 135
 Rim Hole Number: 5

KK-0365JM

Wheel Hub



CHEVROLET TRANS SPORT

OE
 10305030
 10434253
 12413035
 12413093
 12429203
 12429204

Fitting Position: Front Axle Left
 Number of Teeth, ABS ring: 94
 Number of Teeth: 33
 Outer Diameter [mm]: 145,5
 Rim Hole Number: 5
 Supplementary Article/Supplementary Info 2:
 With integrated ABS sensor
 Thread Size: M12X1,5

Mounting

KK-0366JM
Wheel Hub


FORD TOURNEO CONNECT / GRAND TOURNEO
 CONNECT MPV / Spac
 FORD TOURNEO CUSTOM Autobus
 FORD TRANSIT Autobus
 FORD TRANSIT CUSTOM Autobus
 FORD TRANSIT CUSTOM Furgonato

OE
 1763850
 1792119
 2207482
 2219711
 2514444
 BK212B664CB

Fitting Position: Rear Axle
 Flange [mm]: 198,5
 For OE number: 1763850
 Rim Hole Number: 5

KK-0369JM
Wheel Hub


FORD TRANSIT Autobus
 FORD TRANSIT Furgonato
 FORD TRANSIT Pianale piatto/Telaio
 FORD TRANSIT TOURNEO

OE
 1371312
 1377911
 1417336
 1756721
 6C111A049BA
 6C112B664BB

Flange [mm]: 193
 Rim Hole Number: 5

KK-0374JM
Wheel Hub


MERCEDES-BENZ VIANO (W639)
 MERCEDES-BENZ VITO / MIXTO Furgonato
 (W639)
 MERCEDES-BENZ VITO Autobus (W639)

OE
 4473300620
 4473300720
 6393300220
 6393300320
 6393300420
 6393300520

Number of Teeth, ABS ring: 96
 Outer Diameter [mm]: 150
 Rim Hole Number: 5
 Supplementary Article/Supplementary Info 2:
 With integrated ABS sensor
 Thread Size: M14X1,5

KK-0375JM
Wheel Bearing Kit


CITROEN XM (Y3)
 CITROEN XM (Y4)
 CITROEN XM Break (Y3)
 CITROEN XM Break (Y4)
 HYUNDAI GENESIS Coupé

OE
 335015
 95035620
 96095947

Inner Diameter 1 [mm]: 45
 Outer Diameter 1 [mm]: 84,02
 Width 1 [mm]: 39

KK-0388JM
Wheel Bearing Kit


PEUGEOT 504 Break (D_, F_)
 PEUGEOT 504 Pick-up (E_)
 PEUGEOT 505 (551A)
 PEUGEOT 505 Break (551D)
 PEUGEOT 604 (561A_)

OE
 303715
 373015
 373017
 374809
 7703090045
 7703090267

Inner Diameter 1 [mm]: 25
 Inner Diameter 2 [mm]: 32
 Outer Diameter 1 [mm]: 47
 Outer Diameter 2 [mm]: 58
 Supplementary Article/Supplementary Info 2:
 With shaft oil seal
 Width 1 [mm]: 15
 Width 2 [mm]: 17

Mounting

KK-0389JM
Wheel Hub


FORD FOCUS II (DA_)
 FORD KUGA I
 FORD MONDEO IV (BA7)
 FORD MONDEO IV Tre volumi (BA7)
 FORD MONDEO IV Turnier (BA7)

OE

1461018
 1493521
 1560931
 1570736
 1753554
 1769848

Flange [mm]: 136
 Rim Hole Number: 5
 Supplementary Article/Supplementary Info 2:
 With integrated ABS sensor

KK-0394JM
Wheel Hub


NISSAN JUKE (F15)
 NISSAN JUKE Van (F15)
 NISSAN LEAF
 NISSAN LEAF (ZE1)
 NISSAN PULSAR 2 volumi /Coda spiovente (C13)
 NISSAN QASHQAI / QASHQAI +2 (J10, JJ10)

OE

402021KA0A
 402022560R
 402023DA0A
 402023PU0A
 402023SH0A
 402023US0A

For OE number: 402023US0A
 Number of Teeth, ABS ring: 96
 Number of Teeth: 29
 Outer Diameter [mm]: 136
 Rim Hole Number: 5
 Supplementary Article/Supplementary Info 2:
 With integrated ABS sensor
 Thread Size: M12X1,25

KK-0399JM
Wheel Hub


MERCEDES-BENZ CLASSE A (W169)
 MERCEDES-BENZ CLASSE B (W245)

OE

1699810027

Flange [mm]: 143
 Rim Hole Number: 5
 Supplementary Article/Supplementary Info 2:
 With integrated ABS sensor

KK-0402JM
Wheel Bearing Kit


MERCEDES-BENZ CLASSE A (W168)
 MERCEDES-BENZ Vaneo (414)

OE

1689810627
 4149810127

Inner Diameter [mm]: 42
 Outer Diameter [mm]: 75
 Width [mm]: 37

KK-0406JM
Wheel Hub


VOLVO S40 I (VS)
 VOLVO V40 Station wagon (VW)

OE

30812651
 308126515
 30819062
 30889072
 308890720
 308890722

Flange [mm]: 140
 Rim Hole Number: 4

Mounting

KK-0410JM

Wheel Hub



FORD GALAXY (WA6)
FORD GALAXY MK II VAN (WA6)
FORD S-MAX (WA6)

OE
1377119
1501070
1570733
1753553
1778502
6G912C299AAB

Flange [mm]: 136
Rim Hole Number: 5

KK-0412JM

Wheel Bearing Kit



LEXUS RX (MCU15)

OE
9036938019

Inner Diameter [mm]: 38
Outer Diameter [mm]: 74
Supplementary Article/Supplementary Info 2:
With shaft oil seal
Width [mm]: 33

KK-0417JM

Wheel Bearing Kit



OPEL KARL

OE
13584680
328039

Inner Diameter [mm]: 38
Outer Diameter [mm]: 71
Width [mm]: 37,9

KK-0423JM

Wheel Hub



FORD KUGA II (DM2)
FORD KUGA II Van
FORD KUGA III (DFK)

OE
1783318
2179243
DV612C299B
DV612C299BAA
DV612C299BAB

Flange [mm]: 136,5
Rim Hole Number: 5
Supplementary Article/Supplementary Info 2:
With integrated ABS sensor

KK-0424JM

Wheel Bearing Kit



ALFA ROMEO 6 (119)
ALFA ROMEO 75 (162B)
ALFA ROMEO 90 (162)
ALFA ROMEO ALFETTA (116)
ALFA ROMEO ALFETTA GT (116)
ALFA ROMEO GIULIETTA (116)

OE
60554002

Inner Diameter 1 [mm]: 42
Outer Diameter 1 [mm]: 75
Width 1 [mm]: 37

Mounting

KK-0425JM

Wheel Bearing Kit



MERCEDES-BENZ EQV (W447)
 MERCEDES-BENZ eVITO Tourer (W447)
 MERCEDES-BENZ MARCO POLO Camper (W447)
 MERCEDES-BENZ V-CLASS (W447)
 MERCEDES-BENZ VITO Furgonato (W447)
 MERCEDES-BENZ VITO Mixto (W447)

OE

4473505500
 4473505600
 4479810106
 A4473505500
 A4473505600
 A4479810106

Inner Diameter 1 [mm]: 52
 Number of Teeth, ABS ring: 96
 Outer Diameter 1 [mm]: 96
 Supplementary Article/Supplementary Info 2:
 With integrated ABS sensor
 Width 1 [mm]: 50

KK-0429JM

Wheel Hub



TOYOTA MIRAI (JPD1_)
 TOYOTA PRIUS PLUS (ZVW4_)
 TOYOTA PRIUS PLUS VAN (_W4_)

OE

4245047050

Flange [mm]: 152
 Outer Diameter [mm]: 74
 Rim Hole Number: 5
 Supplementary Article/Supplementary Info 2:
 With integrated ABS sensor
 Width [mm]: 64

KK-0432JM

Wheel Hub



FORD TRANSIT Autobus
 FORD TRANSIT Furgonato
 FORD TRANSIT Pianale piatto/Telaio
 FORD TRANSIT TOURNEO

OE

1371313
 1377912
 1417337
 6C111A049DA
 6C112B664DA
 6C112B664DB

Flange [mm]: 193
 Rim Hole Number: 5

KK-0433JM

Wheel Bearing Kit



MERCEDES-BENZ CLASSE GL (X164)
 MERCEDES-BENZ CLASSE M (W164)
 MERCEDES-BENZ CLASSE R (W251, V251)

OE

1649810206

Inner Diameter [mm]: 53,5
 Outer Diameter [mm]: 98
 Supplementary Article/Supplementary Info 2:
 With integrated ABS sensor
 Width [mm]: 50

KK-0437JM

Wheel Hub



VOLVO V40 2 volumi /Coda spiovente
 VOLVO V40 Cassone / coda spiovente (525)
 VOLVO V40 Cross Country (526)

OE

31277680
 31387352
 31406755

Flange [mm]: 136
 Rim Hole Number: 5

Mounting

KK-0439JM

Wheel Hub



DODGE JOURNEY
DODGE JOURNEY VAN (JC)
FIAT FREEMONT (JF_)

OE

5171124AB
5171124AE
K04779796AA
K04779796AB
K05171124AD
K05171124AE

Flange [mm]: 161,7
Rim Hole Number: 5
Supplementary Article/Supplementary Info 2:
With integrated ABS sensor

KK-0442JM

Wheel Hub



TOYOTA PRIUS (ZVW5_)
TOYOTA PRIUS PHV (_W52_)
TOYOTA YARIS (_P21_, _PA1_, _PH1_)

OE

4355002110
4355002120
4355002130
4355047020
43550K0010

Flange [mm]: 135
Outer Diameter [mm]: 85
Rim Hole Number: 5

KK-0443JM

Wheel Hub



NISSAN 350 Z (Z33)
NISSAN 350 Z Roadster (Z33)

OE

43210AL505

Inner Diameter [mm]: 43
Outer Diameter [mm]: 84
Rim Hole Number: 4
Width [mm]: 45

KK-0445JM

Wheel Hub



FORD FOCUS IV
FORD FOCUS IV Tre volumi (HM)
FORD FOCUS IV Turnier (HP)

OE

2197196
2216258
2427514
2427517
2611936
JX6C2C299C1B

Outer Diameter [mm]: 118,4
Rim Hole Number: 5
Supplementary Article/Supplementary Info 2:
With integrated ABS sensor
Supplementary Article/Supplementary Info:
With accessories

KK-0448JM

Wheel Bearing Kit



AUDI A4 (8D2, B5)
AUDI A4 Avant (8D5, B5)
AUDI A8 (4D2, 4D8)
MAZDA E-SERIE Pianale piatto/Telaio (SD1)

OE

4D0407625A
8D0498625A

Inner Diameter 1 [mm]: 45
Inner Diameter 2 [mm]: 43
Outer Diameter 1 [mm]: 85
Width 1 [mm]: 37

Mounting

KK-0450JM

Wheel Bearing Kit



MERCEDES-BENZ CLASSE GL (X166)
 MERCEDES-BENZ CLASSE M (W166)
 MERCEDES-BENZ GLE (W166)
 MERCEDES-BENZ GLE Coupé (C292)
 MERCEDES-BENZ GLS (X166)

OE
 1669810006
 K52124768AB

Inner Diameter [mm]: 52
 Outer Diameter [mm]: 96
 Supplementary Article/Supplementary Info 2:
 With integrated ABS sensor
 Width [mm]: 50

KK-0452JM

Wheel Bearing Kit



SUZUKI CARRY Furgonato (FD)
 SUZUKI SAMURAI (SJ)
 SUZUKI SJ 413
 SUZUKI SUPER CARRY Autobus (ED)

OE
 0926235031
 0926235036
 43215A0100
 91051671003
 926235036
 MB393210

Inner Diameter [mm]: 35
 Outer Diameter [mm]: 72
 Supplementary Article/Supplementary Info 2:
 With shaft oil seal
 Width [mm]: 17

KK-0453JM

Wheel Hub



CITROEN DS4
 CITROEN DS5
 DS DS 4 / DS 4 CROSSBACK
 DS DS5
 PEUGEOT 308 (4A_, 4C_)
 PEUGEOT 308 CC

OE
 3748A5

Flange [mm]: 129
 Rim Hole Number: 4
 Supplementary Article/Supplementary Info 2:
 With ABS sensor ring

KK-0460JM

Wheel Hub



VOLVO XC90 I
 VOLVO XC90 I VAN (275)

OE
 30794650
 31360097
 313600970
 31406300
 314063000

Flange [mm]: 136
 Rim Hole Number: 5

KK-0462JM

Wheel Bearing Kit



FORD TRANSIT Autobus
 FORD TRANSIT Furgonato
 FORD TRANSIT Pianale piatto/Telaio

OE
 0634049
 11634049
 1815273
 BK3W1A049AA

Inner Diameter 1 [mm]: 57
 Inner Diameter 2 [mm]: 51
 Outer Diameter 1 [mm]: 97
 Outer Diameter 2 [mm]: 82,5
 Width 1 [mm]: 22
 Width 2 [mm]: 23

Mounting

KK-0463JM

Wheel Hub



FORD TRANSIT Autobus
FORD TRANSIT Furgonato
FORD TRANSIT Pianale piatto/Telaio

OE

1810251
1810257
2128328
2167069
BK312C300BB
BK312C300BC

Flange [mm]: 208
Rim Hole Number: 5
Supplementary Article/Supplementary Info 2:
With integrated ABS sensor

KK-0465JM

Wheel Hub



LEXUS IS III (GSE3_, AVE3_)

OE

4355030070
4355030071

Flange [mm]: 140
Rim Hole Number: 5
Supplementary Article/Supplementary Info 2:
With integrated ABS sensor

KK-0466JM

Wheel Hub



FORD MONDEO V 2 volumi /Coda spiovente
FORD MONDEO V Tre volumi
FORD MONDEO V Turnier

OE

1801093
1826188
1929802
2107223
2236123
DG9C2C300A2D

Flange [mm]: 136
Supplementary Article/Supplementary Info 2:
With integrated ABS sensor

KK-0471JM

Wheel Hub



CHRYSLER GRAND VOYAGER V (RT)
DODGE GRAND CARAVAN

OE

4721578AB
4721578AD
4721578AE
4721985AA
4721985AE

Flange [mm]: 162
Rim Hole Number: 5
Supplementary Article/Supplementary Info 2:
With integrated ABS sensor

KK-0472JM

Wheel Hub



LEXUS LC
LEXUS LS (UCF30)
LEXUS LS (UVF4_, USF4_)
LEXUS LS (_F5_)

OE

4241050040
4241050041
4241050042

Flange [mm]: 157,9
Outer Diameter [mm]: 87,3
Rim Hole Number: 5
Supplementary Article/Supplementary Info 2:
With integrated ABS sensor
Width 1 [mm]: 101,7
Width [mm]: 68,9

Mounting

KK-0475JM

Wheel Hub



RENAULT SAFRANE I (B54_)
RENAULT SAFRANE II (B54_)

OE

7700787641
7700803924
7700803931
7701204693

Inner Diameter 2 [mm]: 25
Inner Diameter [mm]: 25
Number of Teeth, ABS ring: 30
Outer Diameter [mm]: 133
Rim Hole Number: 5
Supplementary Article/Supplementary Info 2:
With ABS sensor ring
Thread Size: M14X1,5

KK-0477JM

Wheel Bearing Kit



IVECO DAILY III Cassone / Furgonato /
Promiscuo
IVECO DAILY III Pianale piatto/Telaio
IVECO DAILY IV Pianale piatto/Telaio

OE

42471033
7182301
7185978

Inner Diameter [mm]: 49
Outer Diameter [mm]: 84
Width [mm]: 48

KK-0481JM

Wheel Hub



FORD COUGAR (EC_)
FORD FIESTA Furgonato (FVD)
FORD FIESTA Furgonato (J5_, J3_)
FORD MONDEO I (GBP)
FORD MONDEO I Tre volumi (GBP)
FORD MONDEO II (BAP)

OE

5027622
6800113
93BB2C299BB
93BB2C299BC
93BX1A049BA

Flange [mm]: 136
Rim Hole Number: 4
Supplementary Article/Supplementary Info 2:
With ABS sensor ring

KK-0489JM

Wheel Hub



SMART FORTWO Cabrio (451)
SMART FORTWO Coupé (451)

OE

0001870V009
4513300025
4513300048
4513300059
4513300159
A4513300025

Flange [mm]: 134
Outer Diameter [mm]: 68
Rim Hole Number: 3
Supplementary Article/Supplementary Info 2:
With integrated ABS sensor

KK-0491JM

Wheel Bearing Kit



FORD TRANSIT Autobus (E_...)
FORD TRANSIT Furgonato (E_...)
FORD TRANSIT Pianale piatto/Telaio (E_...)
FORD TRANSIT TOURNEO

OE

5025900
92VB1225BA

Inner Diameter [mm]: 45
Outer Diameter [mm]: 85
Supplementary Article/Supplementary Info 2:
With shaft oil seal
Width [mm]: 30,3

Mounting

KK-0493JM
Wheel Hub


NISSAN TEANA II (J32)

OE

 402021AB0A
 402023ZG0A
 402029W60A
 40202JN01A
 40202JP01A
 40203JN01A

 Flange [mm]: 136
 Inner Diameter [mm]: 30,5
 Outer Diameter [mm]: 93
 Rim Hole Number: 5
 Supplementary Article/Supplementary Info 2:
 With integrated ABS sensor
 Width [mm]: 40,7

KK-0495JM
Wheel Hub

 VOLVO 850 (LS)
 VOLVO 850 Station wagon (LW)
 VOLVO C70 I Cabriolet
 VOLVO C70 I Coupé
 VOLVO S70 (LS)
 VOLVO V70 I (LV)

OE

 271585
 2715852
 271795
 2717950
 2717957

 Flange [mm]: 136
 Rim Hole Number: 5
 Supplementary Article/Supplementary Info 2:
 With ABS sensor ring

KK-0496JM
Wheel Hub

 AUDI Q4 Sportback (F4N)
 AUDI Q4 SUV (F4B)
 CUPRA BORN (K11)

OE

 5QF501611B
 5QF501611C
 5QF501611D
 5QF501611G

 Number of Teeth, ABS ring: 86
 Outer Diameter [mm]: 136,5
 Rim Hole Number: 5
 Supplementary Article/Supplementary Info 2:
 With integrated ABS sensor
 Thread Size: M14X1,5

KK-0502JM
Wheel Hub

 FORD KUGA II (DM2)
 FORD KUGA II Van

OE

 1782691
 2270715
 2361440
 CV612C299BNB
 CV612C299BNC
 CV612C299BND

 Number of Teeth: 27
 Outer Diameter [mm]: 136
 Rim Hole Number: 5
 Supplementary Article/Supplementary Info 2:
 With screws
 Thread Size: M12X1,5

KK-0503JM
Wheel Hub

 FORD COUGAR (EC_)
 FORD FIESTA Furgonato (F3L, F5L)
 FORD FIESTA Furgonato (J5_, J3_)
 FORD MONDEO I (GBP)
 FORD MONDEO I Tre volumi (GBP)
 FORD MONDEO II (BAP)

OE

 5027621
 93BB2C299AB
 93BB2C299AC

 Flange [mm]: 136
 Rim Hole Number: 4

Mounting

KK-0504JM

Wheel Hub



DODGE JOURNEY
DODGE JOURNEY VAN (JC)
FIAT FREEMONT (JF_)

OE

5171125AB
5171125AE
K04779797A
K04779797AA
K05171125AD
K05171125AE

Flange [mm]: 161,7
Rim Hole Number: 5
Supplementary Article/Supplementary Info 2:
With integrated ABS sensor

KK-0506JM

Wheel Hub



SUZUKI SX4 (EY, GY)
SUZUKI SX4 Tre volumi (GY)

OE

4340280J00
4340280J01
4340280J01000
4340280J02
4340280J02000

Flange [mm]: 140
Rim Hole Number: 5
Supplementary Article/Supplementary Info 2:
With integrated ABS sensor

KK-0509JM

Wheel Bearing Kit



IVECO DAILY III Cassone / Furgonato /
Promiscuo
IVECO DAILY III Pianale piatto/Telaio

OE

42471216
504207325

Inner Diameter [mm]: 45
Outer Diameter [mm]: 88
Width [mm]: 55

KK-0512JM

Wheel Hub



HYUNDAI i20 III (BC3, BI3)
HYUNDAI KONA (OS)
HYUNDAI TUCSON (NX4E, NX4A)
KIA SPORTAGE V (NQ5)

OE

51730L1000

Flange [mm]: 139
Outer Diameter [mm]: 92
Rim Hole Number: 5

KK-0514JM

Wheel Hub



VOLVO S60 I
VOLVO S80 I (TS, XY)
VOLVO V70 II (SW)
VOLVO XC70 CROSS COUNTRY

OE

30639877
306398770
306398777
30639899
30666542
30748192

Flange [mm]: 136
Rim Hole Number: 5
Supplementary Article/Supplementary Info 2:
With integrated ABS sensor

Mounting

KK-0515JM

Wheel Bearing Kit



VW TRANSPORTER I Autobus (22, 24, 25, 28)
 VW TRANSPORTER I Furgonato (21, 23)
 VW TRANSPORTER I Pianale piatto/Telaio (26)
 VW TRANSPORTER II Autobus
 VW TRANSPORTER II Furgonato
 VW TRANSPORTER II Pianale piatto/Telaio

OE
 211498071
 211498071BS

Inner Diameter 1 [mm]: 19
 Inner Diameter 2 [mm]: 31,75
 Outer Diameter 1 [mm]: 45,237
 Outer Diameter 2 [mm]: 59,131
 Width 1 [mm]: 16,637
 Width 2 [mm]: 16,764

KK-0516JM

Wheel Hub



FORD B-MAX (JK)
 FORD B-MAX Van
 FORD ECOSPORT
 FORD TOURNEO COURIER Kombi
 FORD TRANSIT COURIER Furgonato
 FORD TRANSIT COURIER Kombi

OE
 1751950
 1754122
 1768073
 1782565
 1870089
 1933622

Flange [mm]: 131
 Rim Hole Number: 4
 Supplementary Article/Supplementary Info 2:
 With integrated ABS sensor

KK-0517JM

Wheel Hub



RENAULT LAGUNA I Grandtour (K56_)

OE
 7701206354

Flange [mm]: 132,5
 Supplementary Article/Supplementary Info 2:
 With integrated ABS sensor

KK-0518JM

Wheel Bearing Kit



VOLVO 760 (704, 764)
 VOLVO 780
 VOLVO 850 Station wagon (LW)
 VOLVO 940 (944)
 VOLVO 940 II (944)
 VOLVO 940 II Station wagon (945)

OE
 13872031
 9140844

Inner Diameter 1 [mm]: 45
 Outer Diameter 1 [mm]: 84
 Width 1 [mm]: 39

KK-0519JM

Wheel Bearing Kit



MERCEDES-BENZ CLASSE E (W210)
 MERCEDES-BENZ CLASSE E Station wagon (S210)
 MERCEDES-BENZ CLASSE S (W140)
 MERCEDES-BENZ CLASSE S (W220)
 MERCEDES-BENZ CLASSE S Coupe (C140)

OE
 0009800516
 1409800616
 1409800716
 2109800116
 2109800516
 2203300051

Inner Diameter [mm]: 49
 Outer Diameter [mm]: 88
 Width [mm]: 46

Mounting

KK-0520JM

Wheel Hub



FORD MONDEO IV (BA7)
 FORD MONDEO IV Tre volumi (BA7)
 FORD MONDEO IV Turnier (BA7)

OE
 1500263
 1776845
 6G912C299FAE
 AG9J2B664FAE

Flange [mm]: 136
 Rim Hole Number: 5
 Supplementary Article/Supplementary Info 2:
 With integrated ABS sensor

KK-0523JM

Wheel Hub



FORD TRANSIT Autobus
 FORD TRANSIT Furgonato
 FORD TRANSIT Pianale piatto/Telaio

OE
 1810256
 1819733
 1824007
 1824047
 2128324
 2167067

Flange [mm]: 215
 Rim Hole Number: 6
 Supplementary Article/Supplementary Info 2:
 With integrated ABS sensor

KK-0524JM

Wheel Hub



CHRYSLER 300 C
 CHRYSLER 300 C (LX)
 DODGE CHALLENGER Coupé
 DODGE CHARGER
 LANCIA THEMA (LX)

OE
 5154262AA
 K05154262AA
 K05154262AB
 K68302651AA

Flange [mm]: 151
 Rim Hole Number: 5
 Supplementary Article/Supplementary Info 2:
 With integrated ABS sensor

KK-0525JM

Wheel Hub



POLESTAR POLESTAR 2 (P)
 VOLVO S60 III (224)
 VOLVO S90 II
 VOLVO V60 II (225)
 VOLVO V90 II
 VOLVO XC60 II

OE
 31476968
 32221051
 32246178
 32315306
 32331434

Number of Teeth, ABS ring: 96
 Outer Diameter [mm]: 136
 Rim Hole Number: 5
 Supplementary Article/Supplementary Info 2:
 With integrated ABS sensor
 Supplementary Article/Supplementary Info 2:
 With screws
 Supplementary Article/Supplementary Info:
 With accessories
 Supplementary Article/Supplementary Info:
 with motor shaft screw
 Thread Size: M14X1,5

KK-0526JM

Wheel Hub



FIAT DOBLO Cassone / Furgonato / Promiscuo (263)
 FIAT DOBLO MPV / Space wagon (152, 263)
 FIAT DOBLO Pianale piatto/Telaio (263)
 FIAT TIPO (356)
 FIAT TIPO 2 volumi /Coda spiovente (356_)

OE
 0051810394
 328027
 51810394
 95513979

Flange [mm]: 117,5
 Rim Hole Number: 5

Mounting

KK-0529JM
Wheel Hub


OPEL KARL

OE
 13584682
 328040

 Flange [mm]: 130
 Rim Hole Number: 4

KK-0531JM
Wheel Bearing Kit

 NISSAN NV350 Autobus
 NISSAN SERENA (C23M)
 NISSAN TERRANO II (R20)
 NISSAN TERRANO Van (R20)
 NISSAN VANETTE CARGO Autobus (HC 23)
 NISSAN VANETTE CARGO Furgonato (HC 23)

OE
 432100W00
 43210VW100

 Inner Diameter [mm]: 42
 Outer Diameter [mm]: 80
 Supplementary Article/Supplementary Info 2:
 With shaft oil seal
 Width [mm]: 38

KK-0532JM
Wheel Bearing Kit


HONDA CR-Z (ZF1)

OE
 44300SEY008
 44300TK6A01

 Inner Diameter [mm]: 43
 Outer Diameter [mm]: 79
 Width [mm]: 41

KK-0533JM
Wheel Bearing Kit


LEXUS UX (_AA1_, _AH1_)

OE
 4241010020
 42410F4010

 Number of Teeth, ABS ring: 96
 Number of Teeth: 26
 Outer Diameter [mm]: 152
 Rim Hole Number: 5
 Supplementary Article/Supplementary Info 2:
 With integrated ABS sensor
 Thread Size: M12X1,5

KK-0536JM
Wheel Hub

 FORD MONDEO V 2 volumi /Coda spiovente
 FORD MONDEO V Tre volumi
 FORD MONDEO V Turnier

OE
 1801428
 1826078
 1940365
 2107221
 2236121
 DG9C2C299B2A

 Flange [mm]: 136
 Rim Hole Number: 5
 Supplementary Article/Supplementary Info 2:
 With integrated ABS sensor

Mounting

KK-0538JM

Wheel Bearing Kit



IVECO DAILY III Autobus
IVECO DAILY III Cassone / Furgonato / Promiscuo
IVECO DAILY III Pianale piatto/Telaio
IVECO DAILY IV Pianale piatto/Telaio

OE
2991644
42470834
42470839
504164178

Inner Diameter [mm]: 35
Outer Diameter [mm]: 68
Width [mm]: 50

KK-0541JM

Wheel Hub



RENAULT LAGUNA I (B56_, 556_)

OE
7701205471

Inner Diameter 2 [mm]: 25
Inner Diameter [mm]: 25
Number of Teeth, ABS ring: 88
Outer Diameter [mm]: 133
Rim Hole Number: 5
Supplementary Article/Supplementary Info 2:
With integrated ABS sensor
Thread Size: M14X1,5

KK-0546JM

Wheel Hub



DACIA SANDERO III

OE
432100170R

Number of Teeth, ABS ring: 96
Outer Diameter [mm]: 122,5
Rim Hole Number: 4
Supplementary Article/Supplementary Info 2:
With integrated ABS sensor
Thread Size: M12X1,5

KK-0547JM

Wheel Hub



VOLVO XC60
VOLVO XC60 I VAN (156)

OE
30760190
31277811
31329971
313299710

Flange [mm]: 136
Rim Hole Number: 5

KK-0548JM

Wheel Hub



MERCEDES-BENZ CLA Coupé (C117)
MERCEDES-BENZ CLA Shooting Brake (X117)
MERCEDES-BENZ CLASSE A (W176)
MERCEDES-BENZ CLASSE B (W246, W242)
MERCEDES-BENZ CLASSE GLA (X156)

OE
2463340206

Flange [mm]: 143
Rim Hole Number: 5

Mounting

KK-0551JM
Wheel Bearing Kit


CHEVROLET ASTRO Furgonato
 MERCEDES-BENZ CLASSE E (W124)
 MERCEDES-BENZ CLASSE E Station wagon (S124)
 MERCEDES-BENZ KOMBI Station wagon (S124)
 MERCEDES-BENZ Tre volumi (W124)

OE

124 330 01 51
 1243300051
 A 124 330 00 51
 A 124 330 01 51

Inner Diameter 1 [mm]: 45
 Outer Diameter 1 [mm]: 85
 Width 1 [mm]: 41

KK-0552JM
Wheel Hub


FIAT SEDICI

OE

4340261ML0
 4340261MM0
 6000628549
 6000630118

Flange [mm]: 140
 Rim Hole Number: 5
 Supplementary Article/Supplementary Info 2:
 With integrated ABS sensor

KK-0553JM
Wheel Hub


LEXUS ES (_Z10_)

OE

4355006050
 4355006080
 4355033020

Number of Teeth, ABS ring: 96
 Outer Diameter [mm]: 152
 Rim Hole Number: 5
 Supplementary Article/Supplementary Info 2:
 With integrated ABS sensor
 Thread Size: M12X1,5

KK-0557JM
Wheel Hub


MITSUBISHI CARISMA (DA_)
 MITSUBISHI CARISMA Tre volumi (DA_)
 MITSUBISHI COLT V (CJ_, CP_)
 MITSUBISHI LANCER VI (CJ-CP_)

OE

MR223284

Flange [mm]: 126
 Rim Hole Number: 4

KK-0558JM
Wheel Hub


LEXUS ES (_Z10_)
 TOYOTA CAMRY (_V7_, _VA7_, _VH7_)

OE

4355006010
 4355006020
 4355006040
 4355007010
 4355033010
 4355033070

Flange [mm]: 152
 Outer Diameter [mm]: 93
 Rim Hole Number: 5

Mounting

KK-0561JM

Wheel Bearing Kit



MERCEDES-BENZ CLASSE C (W203)
 MERCEDES-BENZ CLASSE C T-Model (S203)
 MERCEDES-BENZ CLASSE E (W210)
 MERCEDES-BENZ CLASSE E Station wagon (S210)

OE
 2109800816
 2109810227

Inner Diameter [mm]: 45
 Outer Diameter [mm]: 84
 Width [mm]: 39

KK-0565JM

Wheel Hub



RENAULT LAGUNA I Grandtour (K56_)

OE
 7700845104
 7701204866
 7701204867
 7701205477

Flange [mm]: 132,8
 Rim Hole Number: 4
 Supplementary Article/Supplementary Info 2:
 With ABS sensor ring

KK-0566JM

Wheel Hub



MERCEDES-BENZ CLASSE C (W206)
 MERCEDES-BENZ CLASSE C T-MODEL (S206)
 MERCEDES-BENZ CLASSE E (W214)
 MERCEDES-BENZ CLASSE E All-Terrain (S214)
 MERCEDES-BENZ CLASSE E T-Model (S214)
 MERCEDES-BENZ CLASSE S (V223)

OE
 2233560100
 A2233560100

Number of Teeth: 30
 Outer Diameter [mm]: 91,4
 Rim Hole Number: 5
 Supplementary Article/Supplementary Info 2:
 With integrated ABS sensor
 Supplementary Article/Supplementary Info:
 With accessories

KQ0951

Dust Cover Kit, shock absorber



LADA SAMARA (2108, 2109, 2115)
 LADA SAMARA 2 volumi /Coda spiovente (2113, 2114, 2115)
 LADA SAMARA FORMA (21099)
 SEAT CORDOBA (6K1, 6K2)
 SEAT CORDOBA (6K2)

OE
 1H0413175
 357412303E
 357413175

Fitting Position: Front Axle

MQ-01300

Shock Absorber



CITROEN 2 CV
 CITROEN DYANE
 CITROEN MEHARI

OE
 3A5402533B
 3A5422533B
 3A5490305D
 3A5490329D
 3AA5422533
 3AA5442533

Fitting Position: Rear Axle
 Shock Absorber Design: Telescopic Shock Absorber
 Shock Absorber Mounting Type: Bottom eye
 Shock Absorber Mounting Type: Top eye
 Shock Absorber Type: Oil Pressure

Mounting

MQ-01345

Shock Absorber



MG MG ZS Fuoristrada chiuso

OE
10573459

Fitting Position: Front Axle Right
Paired article numbers: MA-01346
Paired article numbers: MJ01346
Paired article numbers: MM-01346
Shock Absorber Design: Suspension Strut
Shock Absorber Mounting Type: Bottom Clamp
Shock Absorber Mounting Type: Bottom Pin
Shock Absorber System: Twin-Tube
Shock Absorber Type: Gas Pressure

MQ-01354

Shock Absorber



VOLVO XC90 II

OE
31451370
31451371
31476853
31476854
31658196
31658197

Fitting Position: Rear Axle
Shock Absorber Design: Suspension Strut
Shock Absorber Mounting Type: Bottom eye
Shock Absorber Mounting Type: Top yoke
Shock Absorber Type: Oil Pressure
Spring Type: for pneumatic suspension vehicles
Suspension: For vehicles with electronic suspension control

MQ-01355

Shock Absorber



BMW 5 Gran Turismo (F07)
BMW 7 (F01, F02, F03, F04)

OE
37114064272
37116790216
37116791672
37116794136
37116794146
37116796926

Braking / Drive Dynamics: For vehicles with ADS
Braking / Drive Dynamics: for vehicles with Vehicle Dynamic Control (VDC)
Fitting Position: Front Axle Right
Paired article numbers: MA-01356
Paired article numbers: MJ01356
Paired article numbers: MM-01356
Shock Absorber Design: Telescopic Shock Absorber
Shock Absorber Mounting Type: Bottom Fork
Shock Absorber Mounting Type: Top yoke
Shock Absorber Type: Gas Pressure
Spring Type: for pneumatic suspension vehicles

MQ-01356

Shock Absorber



BMW 5 Gran Turismo (F07)
BMW 7 (F01, F02, F03, F04)

OE
37114064271
37116790215
37116791671
37116794135
37116794145
37116796925

Braking / Drive Dynamics: For vehicles with ADS
Braking / Drive Dynamics: for vehicles with Vehicle Dynamic Control (VDC)
Fitting Position: Front Axle Left
Paired article numbers: MA-01355
Paired article numbers: MJ01355
Paired article numbers: MM-01355
Shock Absorber Design: Telescopic Shock Absorber
Shock Absorber Mounting Type: Bottom Fork
Shock Absorber Mounting Type: Top pin
Shock Absorber Type: Gas Pressure
Spring Type: for pneumatic suspension vehicles

Mounting

MQ-01357

Shock Absorber



BMW 1 (F20)
BMW 1 Van (F20)

OE

37126797906
37126860162
37126861778
37126865547

Braking / Drive Dynamics: for vehicles with Vehicle Dynamic Control (VDC)
Drive Type: All-wheel Drive
Drive Type: Rear Wheel Drive
Fitting Position: Rear Axle left and right
Shock Absorber Design: Absorber does not carry a spring
Shock Absorber Mounting Type: Bottom eye
Shock Absorber Mounting Type: Top pin
Shock Absorber Type: Gas Pressure
Suspension: For vehicles with electronic suspension control

MQ-50098

Shock Absorber



MERCEDES-BENZ CLASSE E (W212)
MERCEDES-BENZ CLASSE E T-Model (S212)
MERCEDES-BENZ CLS (C218)
MERCEDES-BENZ CLS Shooting Brake (X218)

OE

2123201830
2123204430
2123260800
A2123201830
A2123204430
A2123260800

Braking / Drive Dynamics: For vehicles with ADS
Braking / Drive Dynamics: For vehicles with Airmatic DC
Fitting Position: Rear Axle Right
Paired article numbers: MA-50099
Paired article numbers: MJ50099
Paired article numbers: MM-50099
Shock Absorber Design: Spring-bearing Damper
Shock Absorber Mounting Type: Bottom Fork
Shock Absorber Mounting Type: Top pin
Shock Absorber Type: Gas Pressure
Suspension: for vehicles with AMG suspension

MQ-50099

Shock Absorber



MERCEDES-BENZ CLASSE E (W212)
MERCEDES-BENZ CLASSE E T-Model (S212)
MERCEDES-BENZ CLS (C218)
MERCEDES-BENZ CLS Shooting Brake (X218)

OE

2123201730
2123204330
2123260700
A2123201730
A2123204330
A2123260700

Braking / Drive Dynamics: For vehicles with ADS
Braking / Drive Dynamics: For vehicles with Airmatic DC
Fitting Position: Rear Axle Left
Paired article numbers: MA-50098
Paired article numbers: MJ50098
Paired article numbers: MM-50098
Shock Absorber Design: Spring-bearing Damper
Shock Absorber Mounting Type: Bottom Fork
Shock Absorber Mounting Type: Top pin
Shock Absorber Type: Gas Pressure
Suspension: for vehicles with AMG suspension

MQ-50100

Shock Absorber



MERCEDES-BENZ GLE (W167)

OE

1673200230
1673202501
1673202601
1673204400
1673205903
1673206003

Braking / Drive Dynamics: for vehicles without ADS Plus
Braking / Drive Dynamics: For vehicles without Airmatic DC
Fitting Position: Rear Axle left and right
Shock Absorber Design: Absorber does not carry a spring
Shock Absorber Mounting Type: Bottom eye
Shock Absorber Mounting Type: Top pin
Shock Absorber Type: Gas Pressure

Mounting

MQ-90072

Shock Absorber



AUDI TT (8J3)
AUDI TT Roadster (8J9)

OE

8J0513025A
8J0513025B
8J0513025C
8J0513025E
8J0513025F

Braking / Drive Dynamics: For vehicles with Magnetic Ride
Fitting Position: Rear Axle
Shock Absorber Design: Suspension Strut
Shock Absorber Mounting Type: Bottom Pin
Shock Absorber Mounting Type: Top pin
Shock Absorber Type: Gas Pressure
Spring Type: for coil-spring suspension vehicles
Suspension: For vehicles with electronic suspension control

MQ-AS495

Pneumatic Suspension



AUDI A8 (4N2, 4N8)

OE

4N4616039F
4N4616039G
4N4616039H
4N4616039K
4N4616040F
4N4616040G

Fitting Position: Front Axle left and right
Spring Type: for pneumatic suspension vehicles

MQ-AS502

Pneumatic Suspension



LEXUS RX (GYL1_, GGL15, AGL10)

OE

48020-48070
48020-48071
48020-48073

Braking / Drive Dynamics: For vehicles without ADS
Fitting Position: Front Axle Left
Paired article numbers: MA-AS503
Paired article numbers: MJAS503
Paired article numbers: MM-AS503
Spring Type: for pneumatic suspension vehicles

MQ-AS503

Pneumatic Suspension



LEXUS RX (GYL1_, GGL15, AGL10)

OE

48010-48070
48010-48071
48010-48073

Braking / Drive Dynamics: For vehicles without ADS
Fitting Position: Front Axle Right
Paired article numbers: MA-AS502
Paired article numbers: MJAS502
Paired article numbers: MM-AS502
Spring Type: for pneumatic suspension vehicles

MQ-AS504

Pneumatic Suspension



MERCEDES-BENZ CLASSE S (W221)

OE

221 320 95 13
221 320 97 13
A 221 320 95 13
A 221 320 97 13
A2213209513
A2213209713

Fitting Position: Front Axle Left
Paired article numbers: MA-AS505
Paired article numbers: MJAS505
Paired article numbers: MM-AS505
Shock Absorber Mounting Type: Bottom Fork
Shock Absorber Type: Gas Pressure
Spring Design: Air Spring

Mounting

MQ-AS505

Pneumatic Suspension



MERCEDES-BENZ CLASSE S (W221)

OE

221 320 96 13
221 320 98 13
A 221 320 96 13
A 221 320 98 13
A2213209613
A2213209813

Fitting Position: Front Axle Right
Paired article numbers: MA-AS504
Paired article numbers: MJAS504
Paired article numbers: MM-AS504
Shock Absorber Mounting Type: Bottom Fork
Shock Absorber Type: Gas Pressure
Spring Design: Air Spring

MQ-AS510

Pneumatic Suspension



AUDI E-TRON (GEN_)
AUDI Q5
AUDI Q7 (4M)
AUDI Q8 (4MN)
AUDI Q8 E-TRON Sportback (GET)
AUDI Q8 E-TRON SUV (GEG)

OE

4M0616039
4M0616039AC
4M0616039AD
4M0616039AE
4M0616039AF
4M0616039AH

Braking / Drive Dynamics: For vehicles with ADS
Drive Type: All-wheel Drive
Fitting Position: Front Axle left and right
For OE number: 4M0616039AT
Spring Type: for pneumatic suspension vehicles

MQ-AS511

Air Spring, suspension



PORSCHE CAYENNE (9YA)
PORSCHE CAYENNE Coupe (9YB)

OE

9Y0616001
9Y0616001B
9Y0616001C

Fitting Position: Rear Axle Left
Paired article numbers: MA-AS512
Paired article numbers: MJAS512
Paired article numbers: MM-AS512
Spring Type: for pneumatic suspension vehicles

MQ-AS512

Air Spring, suspension



PORSCHE CAYENNE (9YA)
PORSCHE CAYENNE Coupe (9YB)

OE

9Y0616002
9Y0616002B
9Y0616002C

Fitting Position: Rear Axle Right
Paired article numbers: MA-AS511
Paired article numbers: MJAS511
Paired article numbers: MM-AS511
Spring Type: for pneumatic suspension vehicles

MQ-AS513

Air Spring, suspension



MERCEDES-BENZ SPRINTER 3,5-t Autabus (907)

OE

9073204701
A9073204701

Fitting Position: Rear Axle left and right
Spring Type: for pneumatic suspension vehicles

Mounting

MQ-AS516

Pneumatic Suspension



MERCEDES-BENZ CLASSE E (W213)
MERCEDES-BENZ CLASSE E T-Model (S213)

OE

2133200700
213320070005
213320070028
213320070080
2133202102
213320210280

Fitting Position: Left Front
Paired article numbers: MA-AS517
Paired article numbers: MJAS517
Paired article numbers: MM-AS517
Shock Absorber Mounting Type: Bottom Fork
Shock Absorber Mounting Type: Top yoke
Spring Type: for pneumatic suspension vehicles
Suspension: for vehicles with AMG suspension
Suspension: For vehicles with electronic suspension control

MQ-AS517

Pneumatic Suspension



MERCEDES-BENZ CLASSE E (W213)
MERCEDES-BENZ CLASSE E T-Model (S213)

OE

2133200800
213320080005
213320080028
213320080080
2133202202
213320220280

Fitting Position: Right Front
Paired article numbers: MA-AS516
Paired article numbers: MJAS516
Paired article numbers: MM-AS516
Shock Absorber Mounting Type: Bottom Fork
Shock Absorber Mounting Type: Top yoke
Spring Type: for pneumatic suspension vehicles
Suspension: for vehicles with AMG suspension
Suspension: For vehicles with electronic suspension control

MQ-AS518

Pneumatic Suspension



HYUNDAI (BEIJING) SANTA FÉ (DM)
KIA SORENTO II (XM)

OE

553202P100
553202W210
553202W700
553212P100
553212W210
553212W700

Fitting Position: Rear Axle left and right
Spring Type: for pneumatic suspension vehicles

MQ-AS527

Valve, compressed-air system



MAYBACH 62 (240_)
MAYBACH MAYBACH (240_)
MERCEDES-BENZ CLASSE E (W211)
MERCEDES-BENZ CLASSE E T-Model (S211)
MERCEDES-BENZ CLS (C219)

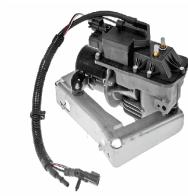
OE

2113200158
A2113200158

Spring Type: for pneumatic suspension vehicles
Valve Type: Solenoid Valve

MQ-ASC070

Compressor, compressed air system



CHEVROLET TRAILBLAZER (KC_)

OE

15145231
15187100
15745306
19177907
19329771
25805727

Overheating protection: Yes
Spring Type: for pneumatic suspension vehicles
Supplementary Article/Supplementary Info 2: With dryer

Mounting

MQ-ASC079

Compressor, compressed air system



PORSCHE 911 (991)
PORSCHE 911 Speedster (991)

OE

9913412639
99134126390
99134126391
99134126392
99134126393
99134126394

Supplementary Article/Supplementary Info 2:
With dryer

MQ-ASV026

Valve, compressed-air system



MERCEDES-BENZ VIANO (W639)
MERCEDES-BENZ VITO / MIXTO Furgonato (W639)
MERCEDES-BENZ VITO Autobus (W639)

OE

6393280030
A639328003
A6393280030

Spring Type: for vehicles with rear axle pneumatic suspension
Valve Type: Solenoid Valve

MQ-ASV027

Valve, compressed-air system



LAND ROVER DISCOVERY V (LR_)
LAND ROVER DISCOVERY V VAN (L462)
LAND ROVER RANGE ROVER IV (LG)
LAND ROVER RANGE ROVER SPORT (LW)
LAND ROVER RANGE ROVER VELAR (L560)

OE

LR037082
LR070246
LR113342
LR176326

Fitting Position: Rear
Spring Type: for pneumatic suspension vehicles
Valve Type: Solenoid Valve

MQ-HY121

Shock Absorber



HYUNDAI TUCSON
KIA SPORTAGE (QL)

OE

54661-D3000

Fitting Position: Front Axle Right
Paired article numbers: MA-HY120
Paired article numbers: MJHY120
Paired article numbers: MM-HY120
Shock Absorber Design: Suspension Strut
Shock Absorber Mounting Type: Bottom Clamp
Shock Absorber Mounting Type: Top pin
Shock Absorber System: Twin-Tube
Shock Absorber Type: Gas Pressure

MQ-LR024

Shock Absorber



LAND ROVER RANGE ROVER VELAR (L560)

OE

J8A218045AA
LR090615

Fitting Position: Front Axle
Shock Absorber Design: Telescopic Shock Absorber
Shock Absorber Mounting Type: Bottom Pin
Shock Absorber Mounting Type: Top pin
Shock Absorber Type: Oil Pressure
Spring Type: for coil-spring suspension vehicles
Suspension: For vehicles with electronic suspension control

Mounting

MQ-W0071

Shock Absorber



CADILLAC ESCALADE
CHEVROLET SILVERADO 1500 Crew Cab Pickup
CHEVROLET SILVERADO 1500 Extended Cab Pickup
CHEVROLET SILVERADO 1500 Standard Cab Pickup

OE

23151123
23312167
23464589
84061228
84176631
84977478

Braking / Drive Dynamics: For vehicles with Magnetic Ride
Fitting Position: Front Axle
Shock Absorber Design: Absorber does not carry a spring
Shock Absorber Mounting Type: Bottom Yoke
Shock Absorber Mounting Type: Top pin
Shock Absorber Type: Oil Pressure
Spring Type: for coil-spring suspension vehicles

SI0010JM

Rod/Strut, stabiliser



FORD C-MAX (DM2)
FORD C-MAX II
FORD C-MAX II Van
FORD FOCUS C-MAX
FORD FOCUS II (DA_)
FORD FOCUS II Cassone / Furgonato /

OE

1500682
1719542
30683233
30683233S1
30683234
30683234S1

Bar/Strut: Push Rod
Fitting Position: Rear Axle left and right
Length [mm]: 106
Material: Steel
Thread Size: M10X1,5

SI0011JM

Rod/Strut, stabiliser



BMW 1 (F40)
BMW 2 Active Tourer (F45)
BMW 2 Active Tourer Van (F45)
BMW 2 Gran Coupe (F44)
BMW 2 Gran Tourer (F46)
BMW 2 Gran Tourer Van (F46)

OE

31 30 6 862 864
31305A7EF69
31306862864
31306891251

Bar/Strut: Push Rod
Fitting Position: Front Axle left and right
Length [mm]: 320
Material: Steel
Thread Size: M10X1,5

SI0012JM

Rod/Strut, stabiliser



CITROEN C-ELYSEE
CITROEN C3 AIRCROSS II
CITROEN C3 AIRCROSS II VAN (2C_, 2R_)
CITROEN C3 II
CITROEN C3 III (SX)
CITROEN C3 III Van (SX_, SY_)

OE

1607326980
1634908180
3640463
508754
508769
9810159480

Bar/Strut: Push Rod
Fitting Position: Front Axle Left
Length [mm]: 330,5
Material: Steel
Paired article numbers: 106-00-0013
Paired article numbers: 1060013
Paired article numbers: SI-0013
Thread Size: M10X1,5

SI0013JM

Rod/Strut, stabiliser



CITROEN C-ELYSEE
CITROEN C3 AIRCROSS II
CITROEN C3 AIRCROSS II VAN (2C_, 2R_)
CITROEN C3 II
CITROEN C3 III (SX)
CITROEN C3 III Van (SX_, SY_)

OE

16046
1607326880
1634908280
3640462
508755
508768

Bar/Strut: Push Rod
Fitting Position: Front Axle Right
Length [mm]: 330,5
Material: Steel
Paired article numbers: 106-00-0012
Paired article numbers: 1060012
Paired article numbers: SI-0012
Thread Size: M10X1,5

Mounting

SI0014JM

Rod/Strut, stabiliser



ABARTH PUNTO EVO (199)
 ABARTH PUNTO EVO (199_)
 ALFA ROMEO GIULIETTA (940)
 ALFA ROMEO GIULIETTA Furgonato (940_)
 ALFA ROMEO MITO (955)
 FIAT 500L

OE
 013321280
 0350175
 0350616
 055700753
 13321280
 1377849

Bar/Strut: Push Rod
 Fitting Position: Front Axle left and right
 Length [mm]: 299
 Material: Steel
 Thread Size: M10X1,5

SI0015JM

Rod/Strut, stabiliser



AUDI A1 (8X1, 8XF)
 AUDI A1 CITY CARVER (GBH)
 AUDI A1 Sportback (8XA, 8XK)
 AUDI A1 Sportback (GBA)
 AUDI A2 (8Z0)
 BMW 3 (E46)

OE
 1095694
 2Q0411315
 2Q0411315A
 2Q0411315B
 2Q0411315C
 3135095694

Bar/Strut: Push Rod
 Fitting Position: Front Axle left and right
 Length [mm]: 270
 Material: Steel
 Thread Size: M10X1,5

SI0016JM

Rod/Strut, stabiliser



AUDI A3 (8P1)
 AUDI A3 (8V1)
 AUDI A3 Cabriolet (8P7)
 AUDI A3 Cabriolet (8V7)
 AUDI A3 Limousine (8VS)
 AUDI A3 Limousine (8YS)

OE
 1K0411315B
 1K0411315D
 1K0411315E
 1K0411315G
 1K0411315J
 1K0411315K

Bar/Strut: Push Rod
 Fitting Position: Front Axle left and right
 Length [mm]: 335
 Material: Steel
 Thread Size: M12X1,5

SI0019JM

Rod/Strut, stabiliser



ABARTH 500 (312)
 ABARTH 500C (312)
 CHRYSLER DELTA
 CHRYSLER YPSILON
 CITROEN C4 I (LC_)
 CITROEN C4 Tre volumi

OE
 1540281
 1580517
 1610929980
 1634891680
 1669578580
 2486293

Bar/Strut: Push Rod
 Fitting Position: Front Axle left and right
 Length [mm]: 290
 Material: Steel
 Thread Size: M10X1,25

SI0020JM

Rod/Strut, stabiliser



FIAT PANDA (169)
 FIAT PANDA Van (141_)
 FIAT PANDA Van (169)

OE
 50703296
 51856872

Bar/Strut: Push Rod
 Fitting Position: Front Axle left and right
 Length [mm]: 313,5
 Material: Steel
 Thread Size: M10X1,25

Mounting

SI0021JM
Rod/Strut, stabiliser


FIAT DOBLO Cassone / Furgonato / Promiscuo (263)
 FIAT DOBLO MPV / Space wagon (152, 263)
 FIAT DOBLO Pianale piatto/Telaio (263)
 OPEL COMBO Cassone / Furgonato / Promiscuo (X12)

OE

0350198
 350198
 350234
 51848645
 51898527
 51935875

Bar/Strut: Push Rod
 Fitting Position: Front Axle left and right
 Length [mm]: 297
 Material: Steel
 Thread Size: M10x1,25

SI0022JM
Rod/Strut, stabiliser


FORD TOURNEO CUSTOM Autobus
 FORD TRANSIT Autobus
 FORD TRANSIT Autobus (FD_-, FB_-, FS_-, FZ_-, FC_-,)
 FORD TRANSIT CUSTOM Autobus
 FORD TRANSIT CUSTOM Furgonato

OE

1495685
 1763714
 2033148
 3C113B438AC
 3C113B438AD
 4519467

Bar/Strut: Push Rod
 Fitting Position: Front Axle left and right
 Length [mm]: 295
 Material: Steel
 Thread Size: M12X1,5

SI0023JM
Rod/Strut, stabiliser


MERCEDES-BENZ CLASSE A (W169)
 MERCEDES-BENZ CLASSE B (W245)

OE

1693200989
 1693201389
 A1693200989
 A1693201389

Bar/Strut: Push Rod
 Fitting Position: Front Axle left and right
 Length [mm]: 244
 Material: Steel
 Thread Size: M10X1,5

ZCQ00007
Coil Spring


KIA OPTIMA

OE

553502T314

Fitting Position: Rear Axle
 Length [mm]: 323
 Outer Diameter [mm]: 102
 Spring Design: Coil Spring
 Thickness/Strength 1 [mm]: 12,8

ZCQ00008
Coil Spring


SKODA OCTAVIA Combi (1U5)
 SKODA OCTAVIA I Cassone / Furgonato / Promiscuo (1U5)
 SKODA ROOMSTER (5J)
 SKODA ROOMSTER Praktik (5J)
 VW BORA Station wagon (1J6)

OE

1J0 511 115 AN

Fitting Position: Rear Axle

Mounting

ZCQ00017
Coil Spring

 BMW 2 Active Tourer (F45)
 BMW 2 Gran Tourer (F46)
 BMW X1 (F48)

OE
 31336866505
 31336866506

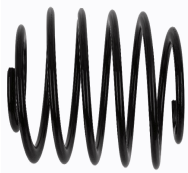
 Fitting Position: Front Axle
 Length [mm]: 320
 Outer Diameter [mm]: 160
 Spring Design: Coil Spring
 Thickness/Strength 1 [mm]: 13

ZCQ00019
Coil Spring

 FORD KUGA II (DM2)
 FORD KUGA II Van

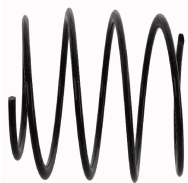
OE
 1783914
 1783915
 1857648
 CV615310AHC
 CV615310AKA
 CV615310NGC

 Fitting Position: Front Axle
 Length [mm]: 329
 Outer Diameter [mm]: 159
 Spring Design: Coil Spring
 Thickness/Strength 1 [mm]: 14

ZCQ00027
Coil Spring

 NISSAN QASHQAI
 NISSAN QASHQAI (J11, J11_)
 NISSAN QASHQAI / QASHQAI +2 (J10, JJ10)
 RENAULT KADJAR

OE
 550204EA2B
 550204EA3B
 550209753R

 Fitting Position: Rear Axle
 Length [mm]: 303
 Outer Diameter [mm]: 125
 Spring Design: Coil Spring
 Thickness/Strength 1 [mm]: 14,5

ZCQ00035
Coil Spring

 AUDI A3 (8V1)
 AUDI A3 Limousine (8VS)
 AUDI A3 Sportback (8VA)

OE
 5Q0411105FB

 Fitting Position: Front Axle
 Length [mm]: 294
 Outer Diameter [mm]: 132
 Spring Design: Coil Spring
 Thickness/Strength 1 [mm]: 11,2

ZCQ00036
Coil Spring

 BMW 3 (E90)
 BMW 3 Coupé (E92)
 BMW 3 Touring (E91)

OE
 31336769915
 31336769916
 31336769917

 Fitting Position: Front Axle
 Length [mm]: 348
 Outer Diameter [mm]: 145
 Spring Design: Coil Spring
 Thickness/Strength 1 [mm]: 11,75