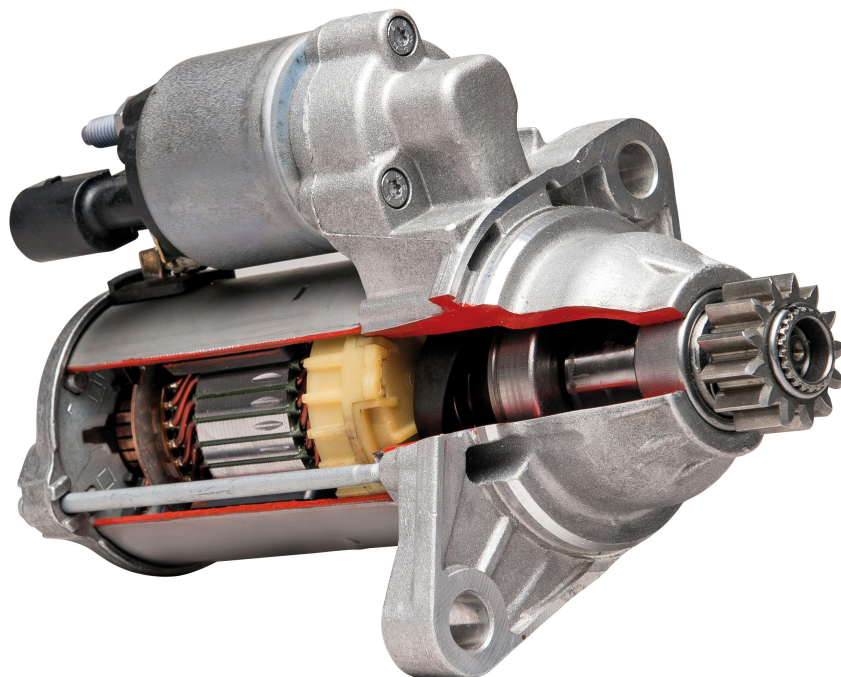


**JapKo**®

**STARTERS**  
**MOTORINI**  
**AVVIAMENTO**



[www.japko.it](http://www.japko.it)

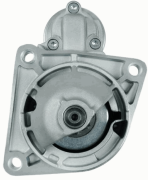
**CATALOGUE**  
FOR CARS AND  
COMMERCIAL VEHICLES

**CATALOGO**  
PER AUTOMOBILI E VEICOLI  
COMMERCIALI

## Electrics

### MT-101JM

#### Starter



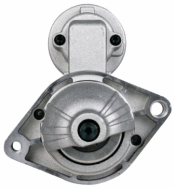
ALFA ROMEO 145 (930)  
ALFA ROMEO 146 (930)  
ALFA ROMEO 147 (937)  
ALFA ROMEO 156 (932)  
ALFA ROMEO 156 Sportwagon (932)  
ALFA ROMEO 159 (939)

**OE**  
1202282  
3110079J00  
3110079J00000  
31100H79J00  
31100H79J00000  
31100T79J00

Clamp: Pin "30" M8 B+  
Clamp: Pin "50" M6  
Flange [mm]: 81,5  
Number of mounting bores: 3  
Number of Teeth: 9  
Number of Thread Bores: 0  
Rated Power [kW]: 2  
Rotation Direction: Clockwise rotation  
Voltage [V]: 12

### MT-102JM

#### Starter



ALFA ROMEO MITO (955)  
CITROEN NEMO Station wagon  
FIAT 500 (312)  
FIAT 500 C (312)  
FIAT DOBLO (119)  
FIAT FIORINO MPV / Space wagon (225\_)

**OE**  
09115193  
1202265  
1202499  
1571299  
1637179980  
1726349

Clamp: M8 B+  
Flange [mm]: 64  
Number of mounting bores: 2  
Number of Teeth: 9  
Number of Thread Bores: 1  
Rated Power [kW]: 1,3  
Rotation Direction: Clockwise rotation  
Voltage [V]: 12

### MT-103JM

#### Starter



ABARTH 124 Spider (348\_)  
ABARTH 500 (312)  
ABARTH 500C (312)  
ABARTH PUNTO EVO (199)  
ALFA ROMEO GIULIETTA (940)  
ALFA ROMEO MITO (955)

**OE**  
1202291  
1202503  
136908  
1542468  
1567033  
1726802

Clamp: M8 B+  
Flange [mm]: 64  
Number of mounting bores: 3  
Number of Teeth: 10  
Number of Teeth: 8  
Number of Teeth: 9  
Number of Thread Bores: 1  
Rated Power [kW]: 1  
Rotation Direction: Clockwise rotation  
Voltage [V]: 12

### MT-104JM

#### Starter



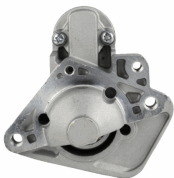
FIAT PALIO (178BX)  
FIAT PALIO Weekend (178DX)  
FIAT PUNTO (188)  
FIAT SEICENTO (187)  
FIAT SIENA (178\_)  
LANCIA Y (840A)

**OE**  
136910  
2506910  
46429594  
46473785  
46518059  
46548653

Clamp: M8, Pin "50" M6  
Flange [mm]: 64  
Number of mounting bores: 3  
Number of Teeth: 10  
Number of Teeth: 8  
Number of Teeth: 9  
Number of Thread Bores: 1  
Rated Power [kW]: 0,8  
Rotation Direction: Clockwise rotation  
Voltage [V]: 12

### MT-105JM

#### Starter



DACIA LOGAN (LS\_)  
DACIA LOGAN II  
DACIA LOGAN MCV (KS\_)  
DACIA LOGAN MCV II  
DACIA LOGAN Pick-up (US\_)  
DACIA SANDERO

**OE**  
2330000Q0F  
2330000Q1H  
2330000Q1M  
2330000Q2C  
2330000Q6L  
2330000QA0

Clamp: M8 B+, Pin "50" Plug  
Flange [mm]: 63  
Number of mounting bores: 3  
Number of Teeth: 10  
Number of Teeth: 12  
Number of Teeth: 13  
Number of Thread Bores: 3  
Rated Power [kW]: 1,4  
Rotation Direction: Clockwise rotation  
Voltage [V]: 12

## Electrics

### MT-106JM

#### Starter



IVECO MASSIF Pick-up  
IVECO MASSIF Station Wagon

#### OE

1516689R  
2994100  
2995990  
2997002  
42498717  
500059592

Clamp: M8, Pin "50" M6  
Flange [mm]: 81,5  
Number of mounting bores: 3  
Number of Teeth: 9  
Number of Thread Bores: 3  
Rated Power [kW]: 2,3  
Rotation Direction: Clockwise rotation  
Voltage [V]: 12

### MT-107JM

#### Starter



FORD FIESTA V (JH\_, JD\_)  
FORD FIESTA VI  
FORD FUSION (JU\_)  
MAZDA 2 (DY)

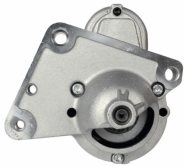
#### OE

1140757  
1144505  
1350459  
1366195  
1368974  
1483817

Clamp: M8, Pin "50" M6  
Number of mounting bores: 3  
Number of Teeth: 12  
Number of Thread Bores: 2  
Rated Power [kW]: 1,4  
Rotation Direction: Clockwise rotation  
Voltage [V]: 12

### MT-108JM

#### Starter



CITROEN BERLINGO (B9)  
CITROEN BERLINGO (K9)  
CITROEN BERLINGO (MF)  
CITROEN C-ELYSEE  
CITROEN C1 (PM\_, PN\_)  
CITROEN C2 (JM\_)

#### OE

1213257  
1638115880  
28100YV010  
28100YV011  
3640319  
5802A2

Clamp: Pin "30" M8 B+  
Clamp: Pin "50" M5  
Number of mounting bores: 4  
Number of Teeth: 11  
Number of Teeth: 12  
Number of Thread Bores: 2  
Rated Power [kW]: 1,4  
Rotation Direction: Clockwise rotation  
Voltage [V]: 12

### MT-109JM

#### Starter



CITROEN JUMPER Autobus  
CITROEN JUMPER Autobus (230P)  
CITROEN JUMPER Autobus (244, Z\_)  
CITROEN JUMPER Furgonato  
CITROEN JUMPER Furgonato (230L)  
CITROEN JUMPER Furgonato (244)

#### OE

130019808  
1300198080  
131955508  
1329201080  
1349920080  
1516685R

Clamp: M8, Pin "50" M6  
Flange [mm]: 81,5  
Number of mounting bores: 3  
Number of Teeth: 9  
Number of Thread Bores: 3  
Rated Power [kW]: 2,5  
Rotation Direction: Clockwise rotation  
Voltage [V]: 12

### MT-110JM

#### Starter



CITROEN JUMPER Autobus (230P)  
CITROEN JUMPER Autobus (244, Z\_)  
CITROEN JUMPER Furgonato (230L)  
CITROEN JUMPER Furgonato (244)  
CITROEN JUMPER Pianale piatto/Telaio (230)  
CITROEN JUMPER Pianale piatto/Telaio (244)

#### OE

1319555080  
1331329080  
134705808  
1347058080  
134705880  
1524014R

Clamp: M8  
Flange [mm]: 82  
Number of mounting bores: 3  
Number of Teeth: 9  
Number of Thread Bores: 3  
Rated Power [kW]: 2,5  
Rotation Direction: Clockwise rotation  
Voltage [V]: 12

## Electrics

### MT-111JM

#### Starter



CITROEN BERLINGO (MF)  
CITROEN BX (XB-\_)  
CITROEN BX Break (XB-\_)  
CITROEN C-CROSSER (EP\_)  
CITROEN C15 Station wagon  
CITROEN C4 Coupé (LA\_)

#### OE

1320921080  
1332419080  
1502453001E  
151412580  
1516680R  
1516741R

Clamp: Pin "30" M8 B+  
Clamp: Pin "50" M5  
Number of mounting bores: 3  
Number of Teeth: 11  
Number of Thread Bores: 2  
Rated Power [kW]: 1,9  
Rotation Direction: Clockwise rotation  
Voltage [V]: 12

### MT-112JM

#### Starter



CITROEN BERLINGO (MF)  
CITROEN BX (XB-\_)  
CITROEN BX Break (XB-\_)  
CITROEN C-CROSSER (EP\_)  
CITROEN C15 Station wagon  
CITROEN C4 Coupé (LA\_)

#### OE

1005831356  
1319121080  
1342792080  
1516776R  
1516779R  
1810A101

Clamp: M8, Pin "50" M5  
Flange [mm]: 66  
Number of mounting bores: 3  
Number of Teeth: 10  
Number of Teeth: 11  
Number of Teeth: 12  
Number of Teeth: 13  
Number of Thread Bores: 3  
Rated Power [kW]: 1,4  
Rotation Direction: Clockwise rotation  
Voltage [V]: 12

### MT-113JM

#### Starter



MERCEDES-BENZ CLASSE C (W202)  
MERCEDES-BENZ CLASSE C (W203)  
MERCEDES-BENZ CLASSE C Coupe (CL203)  
MERCEDES-BENZ CLASSE C Station wagon (S202)  
MERCEDES-BENZ CLASSE C T-Model (S203)

#### OE

0031515001  
003151500180  
0041512101  
0041513001  
0041513901  
0041514501

Clamp: M8  
Flange [mm]: 82,5  
Number of mounting bores: 2  
Number of Teeth: 10  
Number of Thread Bores: 2  
Rated Power [kW]: 2  
Rotation Direction: Clockwise rotation  
Voltage [V]: 12

### MT-114JM

#### Starter



FORD FIESTA IV (JA\_, JB\_)  
FORD FOCUS (DAW, DBW)  
FORD FOCUS Station wagon (DNW)  
FORD FOCUS Tre volumi (DFW)  
FORD PUMA (EC\_)  
MAZDA 121 III (JASM, JBSM)

#### OE

0018882  
1004565  
1004566  
1011330  
1011331  
1018882

Clamp: Pin "50" M6  
Flange [mm]: 76  
Number of mounting bores: 3  
Number of Teeth: 10  
Number of Thread Bores: 3  
Rated Power [kW]: 1,1  
Rotation Direction: Clockwise rotation  
Voltage [V]: 12

### MT-115JM

#### Starter



CITROEN AX (ZA-\_)  
CITROEN BERLINGO (B9)  
CITROEN BERLINGO (MF)  
CITROEN C-ELYSEE  
CITROEN C2 (JM\_)  
CITROEN C3 I (FC\_)

#### OE

5802000000000  
5802CR  
5802E9  
5802ER  
5802F3  
5802Q3

Clamp: M8, Pin "50" M5  
Number of mounting bores: 3  
Number of Teeth: 9  
Number of Thread Bores: 1  
Rated Power [kW]: 0,9  
Rotation Direction: Clockwise rotation  
Voltage [V]: 12

## Electrics

### MT-116JM

#### Starter



ALFA ROMEO 159 (939)  
ALFA ROMEO 159 Sportwagon (939)  
ALFA ROMEO BRERA  
ALFA ROMEO SPIDER (939)  
CHRYSLER DELTA  
FIAT BRAVO II (198)

#### OE

0001Y03631  
00K68080459AA  
3110055L00  
3110055L00000  
3110055L01  
31100T55L00

Clamp: M8 B+, Pin "50" M6  
Flange [mm]: 76  
Number of mounting bores: 3  
Number of Teeth: 10  
Number of Teeth: 11  
Number of Thread Bores: 0  
Rated Power [kW]: 1,4  
Rotation Direction: Clockwise rotation  
Voltage [V]: 12

### MT-117JM

#### Starter



FIAT PALIO (178BX)  
FIAT PALIO Weekend (178DX)  
FIAT PANDA (141A\_)  
FIAT PUNTO (188)  
FIAT SEICENTO (187)  
FIAT SIENA (178\_)

#### OE

46432262  
46465475  
46758241  
46763530  
46765839  
46796553

Clamp: M8, Pin "50" M6  
Flange [mm]: 64  
Number of mounting bores: 3  
Number of Teeth: 9  
Number of Thread Bores: 2  
Rated Power [kW]: 0,8  
Rotation Direction: Clockwise rotation  
Voltage [V]: 12

### MT-118JM

#### Starter



LAND ROVER DEFENDER Cabrio (LD)  
LAND ROVER DEFENDER Pick-up (LD\_)  
LAND ROVER DEFENDER Station Wagon (LD)

#### OE

1372739  
1375378  
1385378  
1574338  
1606413580  
1669558

Clamp: Pin "30" M8 B+  
Clamp: Pin "50" M6  
Flange [mm]: 89  
Number of mounting bores: 2  
Number of Teeth: 12  
Number of Thread Bores: 0  
Rated Power [kW]: 2  
Rotation Direction: Clockwise rotation  
Voltage [V]: 12

### MT-119JM

#### Starter



FORD C-MAX (DM2)  
FORD C-MAX II  
FORD FOCUS C-MAX  
FORD FOCUS II (DA\_)  
FORD FOCUS II Station wagon (DA\_)  
FORD FOCUS II Tre volumi (DA\_)

#### OE

1229427  
1233234  
1254222  
1368970  
1469712  
1707507

Clamp: Pin "30" M8 B+  
Clamp: Pin "50" M6  
Number of mounting bores: 3  
Number of Teeth: 11  
Number of Thread Bores: 2  
Rated Power [kW]: 1,2  
Rotation Direction: Clockwise rotation  
Voltage [V]: 12

### MT-120JM

#### Starter



AUDI A1 (8X1, 8XF)  
AUDI A1 Sportback (8XA, 8XK)  
AUDI A3 (8P1)  
AUDI A3 Cabriolet (8P7)  
AUDI A3 Sportback (8PA)  
AUDI Q3 (8U)

#### OE

02M911023N  
02M911023NX  
02M911023P  
02M911023PX  
02M911024  
02M911024A

Clamp: Pin "50" Plug  
Flange [mm]: 76  
Number of mounting bores: 2  
Number of Teeth: 11  
Number of Teeth: 12  
Number of Thread Bores: 0  
Rated Power [kW]: 2  
Rotation Direction: Anti-clockwise rotation  
Voltage [V]: 12

## Electrics

### MT-121JM

#### Starter



FORD ESCORT CLASSIC (AAL, ABL)  
 FORD ESCORT V (GAL)  
 FORD ESCORT V Station wagon (GAL, AVL)  
 FORD ESCORT VI (GAL)  
 FORD ESCORT VI Station wagon (GAL)  
 FORD ESCORT VI Tre volumi (GAL)

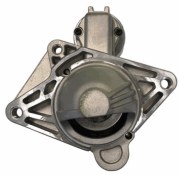
#### OE

1008813  
 1008835  
 1027300  
 1058429  
 1061267  
 1061627

Clamp: M8, Pin "50" M6  
 Flange [mm]: 76  
 Number of mounting bores: 3  
 Number of Teeth: 10  
 Number of Thread Bores: 3  
 Rated Power [kW]: 2,2  
 Rotation Direction: Clockwise rotation  
 Voltage [V]: 12

### MT-122JM

#### Starter



MERCEDES-BENZ CLASSE X (470)  
 NISSAN NAVARA Pick-up (D23)  
 NISSAN QASHQAI / QASHQAI +2 (J10, JJ10)  
 NISSAN X-TRAIL (T31)  
 RENAULT ALASKAN  
 RENAULT ESPACE IV (JK0/1\_)

#### OE

1202193  
 1202204  
 1202395  
 2330000Q0A  
 2330000Q0D  
 2330000Q1E

Clamp: Pin "30" M8 B+  
 Clamp: Pin "50" M5  
 Flange [mm]: 76  
 Number of mounting bores: 3  
 Number of Teeth: 10  
 Number of Teeth: 11  
 Number of Thread Bores: 0  
 Rated Power [kW]: 2,2  
 Rotation Direction: Clockwise rotation  
 Voltage [V]: 12

### MT-123JM

#### Starter



HYUNDAI GALLOPER II (JK-01)  
 HYUNDAI TERRACAN (HP)  
 MITSUBISHI GALANT VI (EA\_)  
 MITSUBISHI GALANT VI Station wagon (EA\_)  
 MITSUBISHI L 200 (K7\_T, K6\_T)  
 MITSUBISHI LANCER V (CB/D\_A)

#### OE

23300FY500  
 3610042250  
 3610042350  
 3610042450  
 M002T84170  
 M002T84171

Clamp: M10  
 Flange [mm]: 77  
 Number of mounting bores: 2  
 Number of Teeth: 12  
 Number of Thread Bores: 2  
 Rated Power [kW]: 2,2  
 Rotation Direction: Clockwise rotation  
 Voltage [V]: 12

### MT-124JM

#### Starter



CITROEN C1 (PM\_, PN\_)  
 CITROEN C1 II  
 PEUGEOT 107  
 PEUGEOT 108  
 TOYOTA AYGO (PAB4\_, KGB4\_)  
 TOYOTA AYGO (WNB1\_, KGB1\_)

#### OE

1612092980  
 1612350580  
 281000Q012  
 281000Q012D  
 281000Q021  
 281000Q030

Clamp: Pin "30" M8 B+  
 Clamp: Pin "50" M5  
 Flange [mm]: 74  
 Number of mounting bores: 2  
 Number of Teeth: 8  
 Number of Thread Bores: 1  
 Rated Power [kW]: 1,1  
 Rotation Direction: Clockwise rotation  
 Voltage [V]: 12

### MT-125JM

#### Starter



FIAT CINQUECENTO (170)  
 FIAT PANDA (141A\_)  
 FIAT SEICENTO (187)  
 FIAT UNO (146A/E)  
 LANCIA A 112  
 SEAT FURA (025A)

#### OE

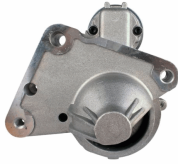
0003914191  
 0003974104  
 3914191  
 3915113  
 3974104  
 4229113

Clamp: M8  
 Flange [mm]: 62  
 Number of mounting bores: 3  
 Number of Teeth: 9  
 Number of Thread Bores: 3  
 Rated Power [kW]: 0,8  
 Rotation Direction: Clockwise rotation  
 Voltage [V]: 12

## Electrics

### MT-126JM

#### Starter



CITROEN BERLINGO (B9)  
CITROEN C1 (PM\_, PN\_)  
CITROEN C2 (JM\_)  
CITROEN C3 I (FC\_)  
CITROEN C3 II  
CITROEN C3 III (SX)

#### OE

28100YV020  
3647959  
5645100680  
5802AA  
5802EG  
5802Z8

Clamp: M8  
Number of mounting bores: 3  
Number of Teeth: 12  
Number of Thread Bores: 2  
Rated Power [kW]: 1,5  
Rotation Direction: Clockwise rotation  
Voltage [V]: 12

### MT-127JM

#### Starter



AUDI A3 (8P1)  
AUDI A3 Cabriolet (8P7)  
AUDI A3 Sportback (8PA)  
SEAT ALTEA (5P1)  
SEAT ALTEA XL (5P5, 5P8)  
SEAT CORDOBA (6L2)

#### OE

02Z911023F  
02Z911023FX  
02Z911023H  
02Z911023HX  
02Z911024J  
2Z911023F

Clamp: Pin "30" M8 B+  
Clamp: Pin "50" Plug  
Flange [mm]: 76  
Number of mounting bores: 3  
Number of Teeth: 10  
Number of Thread Bores: 0  
Rated Power [kW]: 2  
Rotation Direction: Anti-clockwise rotation  
Voltage [V]: 12

### MT-128JM

#### Starter



CHEVROLET CORSA Pick-up  
CHEVROLET CORSA Station wagon  
CHEVROLET CORSA Tre volumi  
CHEVROLET TRAX  
HONDA CIVIC VII Hatchback (EU, EP, EV)  
OPEL ASTRA CLASSIC (L48)

#### OE

1202591  
136934  
2506934  
31200PLZD00  
6202000  
6202043

Clamp: Pin "30" M8 B+  
Clamp: Pin "50" M4  
Flange [mm]: 78  
Number of mounting bores: 2  
Number of Teeth: 13  
Number of Thread Bores: 1  
Rated Power [kW]: 1,4  
Rotation Direction: Clockwise rotation  
Voltage [V]: 12

### MT-129JM

#### Starter



FORD C-MAX (DM2)  
FORD FOCUS C-MAX  
FORD FOCUS II (DA\_)  
FORD FOCUS II Cabriolet  
FORD FOCUS II Station wagon (DA\_)  
FORD FOCUS II Tre volumi (DA\_)

#### OE

1427763  
1476606  
1529431  
1904993  
4M5T11000FA  
6G9N11000GA

Clamp: M8 B+  
Flange [mm]: 63  
Number of mounting bores: 3  
Number of Teeth: 11  
Number of Thread Bores: 3  
Rated Power [kW]: 2,2  
Rotation Direction: Clockwise rotation  
Voltage [V]: 12

### MT-130JM

#### Starter



BMW 02 (E10)  
BMW 02 Cabriolet (E10)  
BMW 02 Touring (E6)  
BMW 1500-2000 (115, 116, 118, 121)  
BMW 1600 GT Coupe  
BMW 2000-3.2 Coupe (E9)

#### OE

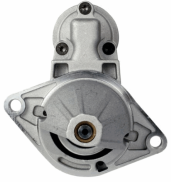
1005821194  
12411308543  
12411312104  
12411312130  
1312104  
1312130

Clamp: M8, Pin "50" M6  
Flange [mm]: 76  
Number of mounting bores: 2  
Number of Teeth: 9  
Number of Thread Bores: 0  
Rated Power [kW]: 1,7  
Rotation Direction: Clockwise rotation  
Voltage [V]: 12

## Electrics

### MT-131JM

#### Starter



DAEWOO LACETTI 2 volumi /Coda spiovente (KLAN)  
FIAT STILO (192)  
FIAT STILO Multi Wagon (192)  
OPEL AGILA (A) (H00)  
OPEL COMBO Tour

**OE**  
55351508  
55351608

Clamp: M8, Pin "50" M6  
Flange [mm]: 68  
Number of mounting bores: 2  
Number of Teeth: 9  
Number of Thread Bores: 0  
Rated Power [kW]: 1,1  
Rotation Direction: Clockwise rotation  
Voltage [V]: 12

### MT-132JM

#### Starter



HYUNDAI GALLOPER I  
HYUNDAI GALLOPER II (JK-01)  
HYUNDAI TERRACAN (HP)  
MITSUBISHI GALANT II Station Wagon (A16\_V)  
MITSUBISHI GALANT IV (A16\_)  
MITSUBISHI GALANT V (E5\_A, E7\_A, E8\_A)

**OE**  
1516954R  
3610042050  
3610047600  
3610047650  
HK988300  
HQ808670

Clamp: M8 B+  
Flange [mm]: 77  
Number of mounting bores: 2  
Number of Teeth: 13  
Number of Thread Bores: 2  
Rated Power [kW]: 2,2  
Rotation Direction: Clockwise rotation  
Voltage [V]: 12

### MT-133JM

#### Starter



CARBODIES TX1  
FORD MAVERICK (UDS, UNS)  
NISSAN NAVARA (D21)  
NISSAN NAVARA (D22)  
NISSAN PATHFINDER (R50)  
NISSAN PICK UP (D21)

**OE**  
1516934R  
2330002N00  
2330010T01  
2330010T02  
233001W400  
233001W40A

Clamp: M8  
Flange [mm]: 95  
Number of mounting bores: 2  
Number of Teeth: 9  
Number of Thread Bores: 0  
Rated Power [kW]: 2,5  
Rotation Direction: Clockwise rotation  
Voltage [V]: 12

### MT-134JM

#### Starter



FIAT DOBLO (119)  
LANCIA YPSILON (843)  
OPEL AGILA (A) (H00)  
OPEL AGILA (B) (H08)  
OPEL ASTRA CLASSIC (L48)  
OPEL ASTRA H (L48)

**OE**  
3110084EC0  
3110085E00  
31100M86J01  
33353237  
55217673  
55353237

Clamp: Pin "30" M8 B+  
Clamp: Pin "50" M6  
Flange [mm]: 64  
Number of mounting bores: 2  
Number of Teeth: 8  
Number of Teeth: 9  
Number of Thread Bores: 1  
Rated Power [kW]: 1,1  
Rotation Direction: Clockwise rotation  
Voltage [V]: 12

### MT-135JM

#### Starter



TOYOTA YARIS (SCP1\_, NLP1\_, NCP1\_)

**OE**  
2280009540  
281000J010  
281000J020  
281000J030  
281000J031  
281000J050

Clamp: Pin "50" Plug  
Flange [mm]: 74  
Number of mounting bores: 2  
Number of Teeth: 8  
Number of Thread Bores: 1  
Rated Power [kW]: 1,2  
Rotation Direction: Clockwise rotation  
Voltage [V]: 12

## Electrics

### MT-136JM

#### Starter



IVECO DAILY I Autobus  
IVECO DAILY I Cassone / Furgonato / Promiscuo  
IVECO DAILY I Pianale piatto/Telaio  
IVECO DAILY I Ribaltabile  
IVECO DAILY II Cassone / Furgonato / Promiscuo

**OE**  
004719664  
106055  
1516663R  
1516714R  
1516792R  
2995140

Clamp: M8  
Flange [mm]: 110  
Number of mounting bores: 3  
Number of Teeth: 9  
Number of Thread Bores: 1  
Rated Power [kW]: 2,2  
Rotation Direction: Clockwise rotation  
Voltage [V]: 12

### MT-137JM

#### Starter



AUTOBIANCHI Y10  
FIAT PANDA (141A\_)  
FIAT TIPO (160)  
FIAT UNO (146A/E)  
LANCIA Y10 (156)

**OE**  
46231510  
46402984  
5999906  
7539303  
7612952  
7621040

Clamp: M8  
Flange [mm]: 64  
Number of mounting bores: 3  
Number of Teeth: 9  
Number of Thread Bores: 1  
Rated Power [kW]: 0,8  
Rotation Direction: Clockwise rotation  
Voltage [V]: 12

### MT-138JM

#### Starter



CHEVROLET AVEO 2 volumi /Coda spiovente (T200)  
CHEVROLET AVEO 2 volumi /Coda spiovente (T250, T255)  
CHEVROLET AVEO Tre volumi (T200)  
CHEVROLET AVEO Tre volumi (T250, T255)

**OE**  
09000700  
09000756  
09117031  
09130838  
09133598  
09163856

Clamp: M8, Pin "50" M6  
Flange [mm]: 68  
Number of mounting bores: 2  
Number of Teeth: 10  
Number of Thread Bores: 0  
Rated Power [kW]: 1,3  
Rotation Direction: Clockwise rotation  
Voltage [V]: 12

### MT-139JM

#### Starter



DACIA LOGAN (LS\_)  
DACIA LOGAN II  
DACIA LOGAN MCV II  
DACIA SANDERO  
DACIA SANDERO II  
RENAULT CLIO Grandtour (KR0/1\_)

**OE**  
2330000QAM  
2330000QAY  
5802X6  
7700864608  
7700865213  
7700867838

Clamp: M8  
Flange [mm]: 63,5  
Number of mounting bores: 3  
Number of Teeth: 9  
Number of Thread Bores: 1  
Rated Power [kW]: 0,9  
Rotation Direction: Clockwise rotation  
Voltage [V]: 12

### MT-140JM

#### Starter



TOYOTA AURIS (NRE15\_, ZZE15\_, ADE15\_, ZRE15\_, NDE15\_)  
TOYOTA YARIS (SCP9\_, NSP9\_, KSP9\_, NCP9\_, ZSP9\_)

**OE**  
281000N010

Clamp: Pin "50" Plug  
Flange [mm]: 74  
Number of mounting bores: 2  
Number of Teeth: 9  
Number of Thread Bores: 1  
Rated Power [kW]: 1,1  
Rotation Direction: Clockwise rotation  
Voltage [V]: 12

## Electrics

### MT-141JM

#### Starter



LEXUS IS II (GSE2\_, ALE2\_, USE2\_)  
 TOYOTA AURIS (NRE15\_, ZZE15\_, ADE15\_,  
 ZRE15\_, NDE15\_)  
 TOYOTA AURIS (NZE18\_, ZRE18\_)  
 TOYOTA AURIS TOURING SPORTS (ADE18\_,  
 ZWE18\_, ZRE18\_)

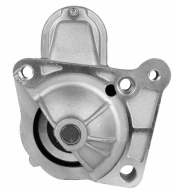
#### OE

281000G040  
 281000R010  
 281000R01084  
 281000R030  
 281000R03084  
 281000R060

Clamp: Pin "30" M8 B+  
 Clamp: Pin "50" Plug  
 Flange [mm]: 74  
 Number of mounting bores: 2  
 Number of Teeth: 9  
 Number of Thread Bores: 2  
 Rated Power [kW]: 2  
 Rotation Direction: Clockwise rotation  
 Voltage [V]: 12

### MT-142JM

#### Starter



MITSUBISHI CARISMA (DA\_)  
 MITSUBISHI CARISMA Tre volumi (DA\_)  
 MITSUBISHI SPACE STAR (DG\_A)  
 NISSAN PRIMERA (P12)  
 NISSAN PRIMERA Hatchback (P12)  
 NISSAN PRIMERA Station wagon (WP12)

#### OE

1810A048  
 2330000Q0E  
 2330000QAC  
 2330000QAE  
 2330000QAE  
 233000AW300  
 233000AW302

Clamp: Pin "30" M8 B+  
 Clamp: Pin "50" M5  
 Number of mounting bores: 4  
 Number of Teeth: 11  
 Number of Thread Bores: 3  
 Rated Power [kW]: 2,1  
 Rotation Direction: Clockwise rotation  
 Voltage [V]: 12

### MT-143JM

#### Starter



MERCEDES-BENZ CLASSE A (W168)  
 MERCEDES-BENZ Vaneo (414)

#### OE

0051511601  
 005151160180  
 0051517401  
 005151740180  
 A0051511601  
 A005151160180

Clamp: M8, Pin "50" M6  
 Flange [mm]: 70  
 Number of mounting bores: 2  
 Number of Teeth: 10  
 Number of Thread Bores: 0  
 Rated Power [kW]: 1,7  
 Rotation Direction: Clockwise rotation  
 Voltage [V]: 12

### MT-144JM

#### Starter



OPEL ASTRA GTC J  
 OPEL ASTRA J  
 OPEL ASTRA J Sports Tourer  
 OPEL ASTRA J Tre volumi  
 OPEL CORSA D  
 OPEL MERIVA B

#### OE

1202110  
 1202281  
 1202421  
 55566800  
 55568572  
 95520115

Clamp: Pin "50" M6  
 Flange [mm]: 68  
 Number of mounting bores: 2  
 Number of Teeth: 9  
 Number of Thread Bores: 0  
 Rated Power [kW]: 1,1  
 Rotation Direction: Clockwise rotation  
 Voltage [V]: 12

### MT-145JM

#### Starter



CITROEN BERLINGO (B9)  
 CITROEN BERLINGO (K9)  
 CITROEN BERLINGO (MF)  
 CITROEN C-ELYSEE  
 CITROEN C2 (JM\_)  
 CITROEN C3 AIRCROSS II

#### OE

12417794971  
 12417805098  
 1638116880  
 3110069K00  
 3640318  
 5802AE

Clamp: Pin "50" M5  
 Number of mounting bores: 4  
 Number of Teeth: 11  
 Number of Thread Bores: 2  
 Rated Power [kW]: 2,2  
 Rotation Direction: Clockwise rotation  
 Voltage [V]: 12

## Electrics

### MT-146JM

#### Starter



AUDI A2 (8Z0)  
AUDI A3 (8L1)  
FORD GALAXY (WGR)  
SEAT ALHAMBRA (7V8, 7V9)  
SEAT AROSA (6H)  
SEAT CORDOBA (6K1, 6K2)

#### OE

02A911023G  
02A911023GX  
02A911023J  
02A911023JX  
02A911023R  
02A911023RX

Clamp: M8  
Flange [mm]: 76  
Number of mounting bores: 2  
Number of Teeth: 10  
Number of Thread Bores: 0  
Rated Power [kW]: 1,8  
Rotation Direction: Anti-clockwise rotation  
Voltage [V]: 12

### MT-147JM

#### Starter



SUZUKI JIMNY (FJ)  
SUZUKI JIMNY Fuoristrada aperto (SN)  
SUZUKI SAMURAI (SJ)  
SUZUKI SAMURAI Fuoristrada aperto (SJ)  
SUZUKI SJ 413  
SUZUKI VITARA (ET, TA)

#### OE

1A5118400  
3100083021  
3110060A10  
3110060A10000  
3110060A11  
3110060A12

Clamp: M8  
Flange [mm]: 66  
Number of mounting bores: 2  
Number of Teeth: 8  
Number of Teeth: 9  
Number of Thread Bores: 0  
Rated Power [kW]: 0,9  
Rotation Direction: Clockwise rotation  
Voltage [V]: 12

### MT-148JM

#### Starter



AUDI 80 (89, 89Q, 8A, B3)  
AUDI 80 (8C, B4)  
AUDI 80 Avant (8C, B4)  
AUDI 90 (89, 89Q, 8A, B3)  
AUDI A4 (8D2, B5)  
AUDI A4 (8E2, B6)

#### OE

068911023P  
068911023R  
068911023RX  
068911023S  
068911023SX  
068911024B

Clamp: M8  
Clamp: Pin "50" 6.3mm Spade  
Flange [mm]: 82,5  
Number of mounting bores: 2  
Number of Teeth: 10  
Number of Teeth: 9  
Number of Thread Bores: 2  
Rated Power [kW]: 1,7  
Rotation Direction: Clockwise rotation  
Voltage [V]: 12

### MT-149JM

#### Starter



MERCEDES-BENZ CLASSE A (W168)  
MERCEDES-BENZ CLASSE A (W169)  
MERCEDES-BENZ CLASSE B (W245)  
MERCEDES-BENZ Vaneo (414)

#### OE

0041518501  
004151850180  
0051212101  
0051511101  
005151110180  
0051512101

Clamp: Pin "50" M6  
Flange [mm]: 70  
Number of mounting bores: 2  
Number of Teeth: 10  
Number of Teeth: 9  
Number of Thread Bores: 0  
Rated Power [kW]: 1,3  
Rotation Direction: Clockwise rotation  
Voltage [V]: 12

### MT-150JM

#### Starter



FORD MONDEO III (B5Y)  
FORD MONDEO III Station wagon (BWY)  
FORD MONDEO III Tre volumi (B4Y)  
JAGUAR X-TYPE (CF1)  
JAGUAR X-TYPE Estate  
LTI TX

#### OE

1096338  
1120215  
1140110  
1151641  
1202166  
1214371

Clamp: M8, Pin "50" M6  
Number of mounting bores: 4  
Number of Teeth: 19  
Number of Thread Bores: 0  
Rated Power [kW]: 2,1  
Rotation Direction: Clockwise rotation  
Voltage [V]: 12

## Electrics

### MT-151JM

#### Starter



ALFA ROMEO MITO (955)  
CHRYSLER YPSILON  
CITROEN NEMO Station wagon  
FIAT 500 (312)  
FIAT 500 C (312)  
FIAT 500L

#### OE

1202203  
1202266  
1202508  
1612794380  
1616323380  
1723350

Clamp: M8 B+  
Flange [mm]: 64  
Number of mounting bores: 2  
Number of Teeth: 10  
Number of Thread Bores: 1  
Rated Power [kW]: 1,4  
Rotation Direction: Clockwise rotation  
Voltage [V]: 12

### MT-152JM

#### Starter



DACIA SOLENZA  
DACIA SUPERNOVA  
MAZDA 2 (DE)  
RENAULT 11 (B/C37\_)  
RENAULT 19 I (B/C53\_)  
RENAULT 19 I Cabriolet (D53\_)

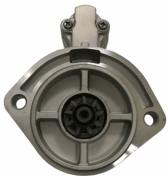
#### OE

0000431120  
0000434120  
1059564  
1516729R  
1516807R  
18213M68KA000

Clamp: M8  
Flange [mm]: 66  
Number of mounting bores: 4  
Number of Teeth: 11  
Number of Teeth: 9  
Number of Thread Bores: 4  
Rated Power [kW]: 1,4  
Rotation Direction: Clockwise rotation  
Voltage [V]: 12

### MT-153JM

#### Starter



NISSAN CABSTAR Pick-up  
NISSAN TRADE Autobus  
NISSAN TRADE Furgonato  
NISSAN TRADE Pianale piatto/Telaio

#### OE

136914  
233000T600  
233001S900  
2330054T00  
2330090067  
2330090069

Clamp: M8  
Flange [mm]: 95  
Number of mounting bores: 2  
Number of Teeth: 9  
Number of Thread Bores: 0  
Rated Power [kW]: 2,2  
Rotation Direction: Clockwise rotation  
Voltage [V]: 12

### MT-154JM

#### Starter



NISSAN MICRA C+C (K12)  
NISSAN MICRA II (K11)  
NISSAN MICRA III (K12)  
NISSAN NOTE (E11)

#### OE

233001F710  
233001F715  
233001F770  
233001F771  
233001F772  
233001F772B

Clamp: M8, Pin "50" M6  
Flange [mm]: 70  
Number of mounting bores: 2  
Number of Teeth: 8  
Number of Thread Bores: 1  
Rated Power [kW]: 1,1  
Rotation Direction: Clockwise rotation  
Voltage [V]: 12

### MT-155JM

#### Starter



DACIA DOKKER  
DACIA DUSTER  
DACIA LODGY  
RENAULT CAPTUR  
RENAULT CLIO Grandtour IV  
RENAULT CLIO IV

#### OE

2330000Q3D  
233000557R  
233000779R  
233001071  
233001071R  
233003307R

Clamp: Pin "30" M8 B+  
Clamp: Pin "50" M5  
Number of mounting bores: 4  
Number of Teeth: 11  
Number of Thread Bores: 3  
Rated Power [kW]: 1  
Rotation Direction: Clockwise rotation  
Voltage [V]: 12

## Electrics

### MT-156JM

#### Starter



SMART CABRIO (450)  
 SMART CITY-COUPE (450)  
 SMART CROSSBLADE (450)  
 SMART FORTWO Cabrio (450)  
 SMART FORTWO Coupé (450)  
 SMART ROADSTER (452)

**OE**  
 0003188V004  
 0003188V005  
 0003188V006  
 0003188V007  
 0003188V008  
 0003188V008000000

Clamp: M8  
 Flange [mm]: 70  
 Number of mounting bores: 3  
 Number of Teeth: 9  
 Number of Thread Bores: 2  
 Rated Power [kW]: 0,8  
 Rotation Direction: Clockwise rotation  
 Voltage [V]: 12

### MT-157JM

#### Starter



MERCEDES-BENZ CLASSE C (W204)  
 MERCEDES-BENZ CLASSE C Coupé (C204)  
 MERCEDES-BENZ CLASSE C T-Model (S204)  
 MERCEDES-BENZ CLASSE E (W212)  
 MERCEDES-BENZ CLASSE E Cabriolet (A207)  
 MERCEDES-BENZ CLASSE E Coupé (C207)

**OE**  
 0009060126  
 000906012680  
 0061514501  
 006151450180  
 6519060026  
 651906002680

Clamp: M8 B+  
 Clamp: Pin "50" M6  
 Flange [mm]: 70  
 Number of mounting bores: 2  
 Number of Teeth: 12  
 Number of Thread Bores: 2  
 Rated Power [kW]: 1,7  
 Rotation Direction: Clockwise rotation  
 Voltage [V]: 12

### MT-158JM

#### Starter



FIAT FIORINO Pick up (146)  
 FIAT PALIO (178BX)  
 FIAT PALIO Weekend (178DX)  
 FIAT PUNTO (176)  
 FIAT SIENA (178\_)  
 FIAT STRADA Pick-up (178E)

**OE**  
 46430721  
 46439669  
 4643970  
 46439700  
 46440079  
 46446291

Clamp: Pin "50" M6  
 Flange [mm]: 82  
 Number of mounting bores: 3  
 Number of Teeth: 9  
 Number of Thread Bores: 3  
 Rated Power [kW]: 1,7  
 Rotation Direction: Clockwise rotation  
 Voltage [V]: 12

### MT-159JM

#### Starter



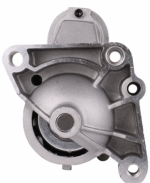
DACIA DOKKER  
 DACIA DUSTER  
 DACIA LODGY  
 DACIA LOGAN II  
 DACIA LOGAN MCV II  
 DACIA SANDERO II

**OE**  
 2330000Q2H  
 233000379R  
 233004868C  
 233004868R  
 233007689R  
 233009323R

Clamp: M8 B+  
 Clamp: Pin "50" Plug  
 Flange [mm]: 64  
 Number of mounting bores: 2  
 Number of Teeth: 12  
 Number of Teeth: 13  
 Number of Thread Bores: 2  
 Rated Power [kW]: 1,7  
 Rotation Direction: Clockwise rotation  
 Voltage [V]: 12

### MT-160JM

#### Starter



RENAULT AVANTIME (DE0\_)  
 RENAULT ESPACE III (JE0\_)  
 RENAULT ESPACE IV (JK0/1\_)  
 RENAULT LAGUNA II (BG0/1\_)  
 RENAULT LAGUNA II Grandtour (KG0/1\_)  
 RENAULT VEL SATIS (BJ0\_)

**OE**  
 1202206  
 1202208  
 2330000Q0B  
 2330000Q0C  
 2330000QAF  
 2330000QAG

Clamp: M8  
 Number of mounting bores: 4  
 Number of Teeth: 10  
 Number of Thread Bores: 3  
 Rated Power [kW]: 2  
 Rotation Direction: Clockwise rotation  
 Voltage [V]: 12

## Electrics

### MT-161JM

#### Starter



PIAGGIO APE (MP) VESPACAR  
PIAGGIO APE TM Furgonato  
PIAGGIO APE TM Pianale piatto/Telaio

#### OE

157715  
803499  
8034993  
834692

Number of mounting bores: 2  
Number of Thread Bores: 0  
Rated Power [kW]: 0,8  
Voltage [V]: 12

### MT-162JM

#### Starter



FORD C-MAX II  
FORD FOCUS II (DA\_)  
FORD FOCUS II Station wagon (DA\_)  
FORD FOCUS II Tre volumi (DA\_)  
FORD FOCUS III  
FORD FOCUS III Tre volumi

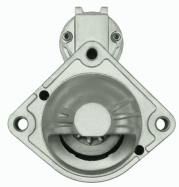
#### OE

1687623  
1715211  
1778016  
1893556  
1898356  
2033247

Clamp: Pin "30" M8 B+  
Clamp: Pin "50" M6  
Number of mounting bores: 3  
Number of Teeth: 11  
Number of Thread Bores: 0  
Rated Power [kW]: 2,3  
Rotation Direction: Clockwise rotation  
Voltage [V]: 12

### MT-163JM

#### Starter



BMW 1 (E87)  
BMW 3 (E46)  
BMW 3 Cabriolet (E46)  
BMW 3 Compact (E46)  
BMW 3 Coupe (E46)  
BMW 3 Touring (E46)

#### OE

12417787354  
12417787356  
7787354  
7787356

Clamp: 30H M5  
Clamp: Pin 50 M6  
Flange [mm]: 74  
Number of mounting bores: 2  
Number of Teeth: 10  
Number of Thread Bores: 2  
Rated Power [kW]: 1,6  
Rotation Direction: Clockwise rotation  
Voltage [V]: 12

### MT-164JM

#### Starter



CHEVROLET MATIZ (M200, M250)  
CHEVROLET SPARK  
DAEWOO MATIZ  
DAEWOO MATIZ (KLYA)  
DAEWOO TICO (KLY3)  
SUZUKI WAGON R+ (EM)

#### OE

3110070B20  
3110075F0  
3110075F00  
3110075F01  
3110075F01000  
3110075F02

Clamp: M8  
Flange [mm]: 75  
Number of mounting bores: 2  
Number of Teeth: 8  
Number of Thread Bores: 2  
Rated Power [kW]: 1  
Rotation Direction: Clockwise rotation  
Voltage [V]: 12

### MT-165JM

#### Starter



SUBARU TREZIA  
TOYOTA AURIS (NRE15\_, ZZE15\_, ADE15\_,  
ZRE15\_, NDE15\_)  
TOYOTA AURIS (NZE18\_, ZRE18\_)  
TOYOTA AURIS TOURING SPORTS (ADE18\_,  
ZWE18\_, ZRE18\_)

#### OE

281000N040  
281000N04084  
281000N060  
2810033090  
2810033110

Clamp: Pin "50" Plug  
Flange [mm]: 74  
Number of mounting bores: 2  
Number of Teeth: 9  
Number of Thread Bores: 1  
Rated Power [kW]: 1,6  
Rotation Direction: Clockwise rotation  
Voltage [V]: 12

## Electrics

### MT-166JM

#### Starter



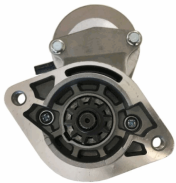
AUDI A6 (4B2, C5)  
DAEWOO MATIZ (KLYA)  
JAGUAR XJ (X350, X358)  
NEW HOLLAND TN-A  
TOYOTA LAND CRUISER (KDJ12\_, GRJ12\_)

**OE**  
580 144 18 16  
5801441816

Clamp: M8 B+  
Flange [mm]: 110  
Number of mounting bores: 3  
Number of Teeth: 9  
Number of Thread Bores: 0  
Rated Power [kW]: 2,6  
Rotation Direction: Clockwise rotation  
Voltage [V]: 12

### MT-167JM

#### Starter



TOYOTA AVENSIS VERSO (\_CLM2\_, \_ACM2\_)  
TOYOTA CARINA E (\_T19\_)  
TOYOTA CARINA E Sportswagon (\_T19\_)  
TOYOTA CARINA E Tre volumi (\_T19\_)  
TOYOTA COROLLA (\_E11\_)  
TOYOTA COROLLA Compact (\_E11\_)

**OE**  
2810064140  
2810064310  
2810064430  
TT15639

Clamp: M8  
Flange [mm]: 74  
Number of mounting bores: 2  
Number of Teeth: 10  
Number of Thread Bores: 2  
Rated Power [kW]: 2,2  
Rotation Direction: Clockwise rotation  
Voltage [V]: 12

### MT-168JM

#### Starter



FIAT BRAVA (182)  
FIAT BRAVO I (182)  
FIAT DOBLO (119)  
FIAT MAREA (185)  
FIAT MAREA Weekend (185)  
FIAT MULTIPLA (186)

**OE**  
361002B402  
46231536  
46451529  
46524472  
46531437  
46748349

Clamp: M8, Pin "50" M6  
Flange [mm]: 63,5  
Number of mounting bores: 3  
Number of Teeth: 9  
Number of Thread Bores: 3  
Rated Power [kW]: 1,3  
Rotation Direction: Clockwise rotation  
Voltage [V]: 12

### MT-169JM

#### Starter



BMW 1 (E81)  
BMW 1 (E87)  
BMW 1 (F20)  
BMW 1 (F21)  
BMW 1 Cabriolet (E88)  
BMW 1 Coupé (E82)

**OE**  
12417798006  
12417801203  
12417802508  
12417804138  
12417804140  
12417811601

Clamp: Pin "30" M8 B+  
Clamp: Pin "50" M6  
Flange [mm]: 69  
Number of mounting bores: 3  
Number of Teeth: 11  
Number of Thread Bores: 0  
Rated Power [kW]: 2,2  
Rotation Direction: Clockwise rotation  
Voltage [V]: 12

### MT-170JM

#### Starter



AUDI A3 (8P1)  
AUDI A3 Cabriolet (8P7)  
AUDI A3 Sportback (8PA)  
AUDI TT (8J3)  
AUDI TT (8N3)  
AUDI TT Roadster (8J9)

**OE**  
02E911023H  
02E911023HX  
02E911023L  
02E911023LX  
2E911023H  
2E911023HX

Clamp: Pin "50" Plug  
Flange [mm]: 76  
Number of mounting bores: 2  
Number of Teeth: 11  
Number of Thread Bores: 0  
Rated Power [kW]: 2  
Rotation Direction: Anti-clockwise rotation  
Voltage [V]: 12

## Electrics

### MT-171JM

#### Starter



DACIA LOGAN (LS\_)  
 DACIA LOGAN Pick-up (US\_)  
 DACIA SANDERO  
 NISSAN ALMERA II (N16)  
 NISSAN ALMERA II Hatchback (N16)  
 NISSAN MICRA III (K12)

#### OE

2330000Q0G  
 2330000Q0H  
 2330000QAB  
 2330000QAW  
 2330000QAZ  
 2330000QUA

Clamp: M8  
 Flange [mm]: 65  
 Number of mounting bores: 3  
 Number of Teeth: 12  
 Number of Thread Bores: 2  
 Rated Power [kW]: 1,4  
 Rotation Direction: Clockwise rotation  
 Voltage [V]: 12

### MT-172JM

#### Starter



BMW 1 Cabriolet (E88)  
 HYUNDAI ACCENT III (MC)  
 HYUNDAI ACCENT III Tre volumi (MC)  
 HYUNDAI ACCENT IV Tre volumi (RB)  
 HYUNDAI ELANTRA Tre volumi (MD, UD)  
 HYUNDAI GETZ (TB)

#### OE

361002A000  
 361002A100  
 361002A300  
 TT16345  
 TT16345PRO

Clamp: M8 B+  
 Clamp: Pin "50" Plug  
 Flange [mm]: 77  
 Number of mounting bores: 2  
 Number of Teeth: 8  
 Number of Thread Bores: 2  
 Rated Power [kW]: 1,7  
 Rotation Direction: Clockwise rotation  
 Voltage [V]: 12

### MT-173JM

#### Starter



BMW 1 (E81)  
 BMW 1 (E87)  
 BMW 3 (E46)  
 BMW 3 (E90)  
 BMW 3 Cabriolet (E46)  
 BMW 3 Cabriolet (E93)

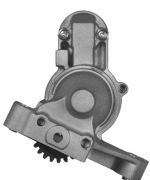
#### OE

12417794952  
 12417796892  
 12417798035  
 12417798036  
 7794952  
 7796892

Clamp: Pin "30" M8 B+  
 Clamp: Pin "50" M6  
 Flange [mm]: 74  
 Number of mounting bores: 2  
 Number of Teeth: 9  
 Number of Thread Bores: 2  
 Rated Power [kW]: 1,8  
 Rotation Direction: Clockwise rotation  
 Voltage [V]: 12

### MT-174JM

#### Starter



CHRYSLER SEBRING (JS)  
 CHRYSLER SEBRING Cabriolet (JS)  
 DODGE AVENGER  
 DODGE CALIBER  
 DODGE JOURNEY  
 JEEP COMPASS (MK49)

#### OE

050033440AC  
 05033440AA  
 05033440AC  
 1810A062  
 1810A143  
 5033440AA

Clamp: M8 B+  
 Number of mounting bores: 3  
 Number of Teeth: 22  
 Number of Thread Bores: 0  
 Rated Power [kW]: 2  
 Rotation Direction: Anti-clockwise rotation  
 Voltage [V]: 12

### MT-175JM

#### Starter



METROCAB Taxi  
 TOYOTA CROWN Tre volumi (\_S1\_)  
 TOYOTA HILUX Fuoristrada chiuso (ZN13\_, LN9\_, RN1\_, YN8\_,  
 TOYOTA HILUX II Pick-up (RN6\_, RN5\_, LN6\_, YN6\_, YN5\_, LN

#### OE

1516979R  
 2810005030  
 2810054070  
 2810054080  
 2810054100  
 2810054110

Clamp: M8  
 Flange [mm]: 82,5  
 Number of mounting bores: 2  
 Number of Teeth: 10  
 Number of Teeth: 11  
 Number of Thread Bores: 1  
 Rated Power [kW]: 2  
 Rotation Direction: Clockwise rotation  
 Voltage [V]: 12

## Electrics

### MT-176JM

#### Starter



CHEVROLET AVEO 2 volumi /Coda spiovente (T200)  
 CHEVROLET AVEO 2 volumi /Coda spiovente (T250, T255)  
 CHEVROLET AVEO 2 volumi /Coda spiovente (T300)

#### OE

25187951  
 63522629  
 96289430  
 96469962  
 96497702  
 96943429

Clamp: M8  
 Flange [mm]: 75  
 Number of mounting bores: 2  
 Number of Teeth: 8  
 Number of Thread Bores: 1  
 Position / Degree: 30  
 Rated Power [kW]: 0,8  
 Rotation Direction: Clockwise rotation  
 Voltage [V]: 12

### MT-177JM

#### Starter



DACIA DOKKER  
 DACIA DUSTER  
 DACIA LODGY  
 DACIA LOGAN (LS\_)  
 DACIA LOGAN II  
 DACIA LOGAN MCV (KS\_)

#### OE

2330000QAA  
 233001105R  
 6025008446  
 7700104674  
 7700105119  
 7711134530

Clamp: M8  
 Flange [mm]: 65  
 Number of mounting bores: 3  
 Number of Teeth: 8  
 Number of Teeth: 9  
 Number of Thread Bores: 3  
 Rated Power [kW]: 1  
 Rotation Direction: Clockwise rotation  
 Voltage [V]: 12

### MT-178JM

#### Starter



AUDI A1 (8X1, 8XF)  
 AUDI A1 Sportback (8XA, 8XK)  
 AUDI A3 (8P1)  
 AUDI A3 Sportback (8PA)  
 SEAT ALTEA (5P1)  
 SEAT ALTEA XL (5P5, 5P8)

#### OE

02T911023R  
 02T911023RX  
 02T911023S  
 02T911023SX  
 02T911024A  
 02T911024AX

Clamp: M8 B+  
 Clamp: Pin "50" Plug  
 Flange [mm]: 76  
 Number of mounting bores: 2  
 Number of Teeth: 10  
 Number of Teeth: 9  
 Number of Thread Bores: 0  
 Rated Power [kW]: 1  
 Rotation Direction: Anti-clockwise rotation  
 Voltage [V]: 12

### MT-179JM

#### Starter



FIAT SEDICI  
 SUBARU JUSTY III (G3X)  
 SUZUKI GRAND VITARA II (JT)  
 SUZUKI IGNIS (FH)  
 SUZUKI IGNIS II  
 SUZUKI JIMNY (FJ)

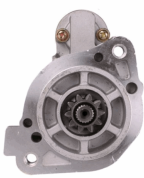
#### OE

3110063J00  
 3110063J10  
 3110075F60  
 3110080G0  
 3110080G00  
 3110080G1

Clamp: Pin "30" M8 B+  
 Clamp: Pin "50" 6.4mm Plug  
 Flange [mm]: 70  
 Number of mounting bores: 2  
 Number of Teeth: 8  
 Number of Thread Bores: 2  
 Rated Power [kW]: 1  
 Rotation Direction: Clockwise rotation  
 Voltage [V]: 12

### MT-180JM

#### Starter



MITSUBISHI PAJERO II (V3\_W)  
 MITSUBISHI PAJERO II (V3\_W, V2\_W, V4\_W)  
 MITSUBISHI PAJERO III (V7\_W, V6\_W)  
 MITSUBISHI PAJERO III Fuoristrada aperto (V6\_W, V7\_W)  
 MITSUBISHI PAJERO IV (V8\_W, V9\_W)

#### OE

009154720280  
 1516512R  
 1810A050  
 1810A050R  
 A009154720280  
 M002T63271

Clamp: M8  
 Flange [mm]: 77  
 Number of mounting bores: 2  
 Number of Teeth: 10  
 Number of Thread Bores: 2  
 Rated Power [kW]: 2,2  
 Rotation Direction: Clockwise rotation  
 Voltage [V]: 12

## Electrics

### MT-181JM

#### Starter



DAIHATSU HIJET Furgonato (S85)  
DAIHATSU HIJET Pick-up  
PIAGGIO PORTER Autobus  
PIAGGIO PORTER Furgonato  
PIAGGIO PORTER Pianale piatto/Telaio

**OE**  
2280005711  
2810087548  
2810087551  
2810087551000

Clamp: M8  
Flange [mm]: 74  
Number of mounting bores: 2  
Number of Teeth: 8  
Number of Thread Bores: 0  
Rated Power [kW]: 0,8  
Rotation Direction: Clockwise rotation  
Voltage [V]: 12

### MT-182JM

#### Starter



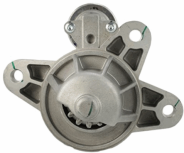
RENAULT KANGOO (KC0/1\_)  
RENAULT MEGANE I (BA0/1\_)  
RENAULT MEGANE I Classic (LA0/1\_)  
RENAULT MEGANE I Coach (DA0/1\_)  
RENAULT MEGANE I Grandtour (KA0/1\_)  
RENAULT MEGANE Scenic (JA0/1\_)

**OE**  
6001545511  
7700113267  
7700113627  
7700116282  
7711134297  
7711134790

Clamp: M8  
Flange [mm]: 65  
Number of mounting bores: 3  
Number of Teeth: 12  
Number of Thread Bores: 3  
Rated Power [kW]: 1,7  
Rotation Direction: Clockwise rotation  
Voltage [V]: 12

### MT-183JM

#### Starter



FORD TRANSIT Autobus (E\_ \_)  
FORD TRANSIT Autobus (V\_ \_)  
FORD TRANSIT Furgonato (E\_ \_)  
FORD TRANSIT Furgonato (T\_ \_)  
FORD TRANSIT Furgonato (V\_ \_)  
FORD TRANSIT Pianale piatto/Telaio (E\_ \_)

**OE**  
1008823  
1024508  
1027928  
1059179  
1073108  
1093471

Clamp: M8, Pin "50" M6  
Flange [mm]: 92  
Number of mounting bores: 3  
Number of Teeth: 13  
Number of Thread Bores: 0  
Rated Power [kW]: 2,3  
Rotation Direction: Clockwise rotation  
Voltage [V]: 12

### MT-184JM

#### Starter



AUDI A3 (8P1)  
AUDI A3 Cabriolet (8P7)  
AUDI A3 Sportback (8PA)  
SEAT ALTEA (5P1)  
SEAT ALTEA XL (5P5, 5P8)  
SEAT IBIZA V (6J5, 6P5)

**OE**  
0AH911023  
0AH911023A  
0AH911023AX  
0AH911023D  
0AH911023DX  
0AH911023K

Clamp: M8  
Flange [mm]: 76  
Number of mounting bores: 3  
Number of Teeth: 10  
Number of Thread Bores: 0  
Rated Power [kW]: 1,1  
Rotation Direction: Anti-clockwise rotation  
Voltage [V]: 12

### MT-185JM

#### Starter



AUDI A4 (8EC, B7)  
AUDI A4 Avant (8ED, B7)  
AUDI A4 Cabriolet (8H7, B6, 8HE, B7)  
AUDI A6 (4F2, C6)  
AUDI A6 Avant (4F5, C6)  
SEAT EXEO (3R2)

**OE**  
03G911023  
03G911023X  
TT15338PRO

Clamp: M8 B+  
Flange [mm]: 82  
Number of mounting bores: 2  
Number of Teeth: 9  
Number of Thread Bores: 0  
Rated Power [kW]: 2  
Rotation Direction: Clockwise rotation  
Voltage [V]: 12

## Electrics

### MT-186JM

#### Starter



AUDI A1 (8X1, 8XF)  
 AUDI A1 Sportback (8XA, 8XK)  
 AUDI A3 (8P1)  
 AUDI A3 Cabriolet (8P7)  
 AUDI A3 Sportback (8PA)  
 SEAT ALTEA (5P1)

#### OE

02N911023N  
 02Z911023M  
 02Z911023MX  
 02Z911023N  
 02Z911023NX  
 02Z911023P

Clamp: M8 B+  
 Flange [mm]: 76  
 Number of mounting bores: 3  
 Number of Teeth: 11  
 Number of Teeth: 12  
 Number of Thread Bores: 0  
 Rated Power [kW]: 1,7  
 Rotation Direction: Clockwise rotation  
 Voltage [V]: 12

### MT-187JM

#### Starter



NISSAN NAVARA (D40)  
 NISSAN PATHFINDER (R51)

#### OE

23300EB300  
 23300EB30A  
 23300EB30B  
 23300EB30REX  
 23300EB71B  
 23300EB71E

Clamp: Pin "30" M8 B+  
 Clamp: Pin "50" M5  
 Flange [mm]: 70  
 Number of mounting bores: 2  
 Number of Teeth: 11  
 Number of Teeth: 12  
 Number of Thread Bores: 2  
 Rated Power [kW]: 2  
 Rotation Direction: Clockwise rotation  
 Voltage [V]: 12

### MT-188JM

#### Starter



CITROEN AX (ZA-)  
 CITROEN BERLINGO (B9)  
 CITROEN BERLINGO (MF)  
 CITROEN BX (XB-)  
 CITROEN BX Break (XB-)  
 CITROEN C-ELYSEE

#### OE

1516758R  
 3960404  
 534054A  
 534054B  
 534054C  
 534054D

Clamp: M8  
 Clamp: Pin "50" 6.4mm Plug  
 Number of mounting bores: 3  
 Number of Teeth: 10  
 Number of Teeth: 9  
 Number of Thread Bores: 1  
 Rated Power [kW]: 0,9  
 Rotation Direction: Clockwise rotation  
 Voltage [V]: 12