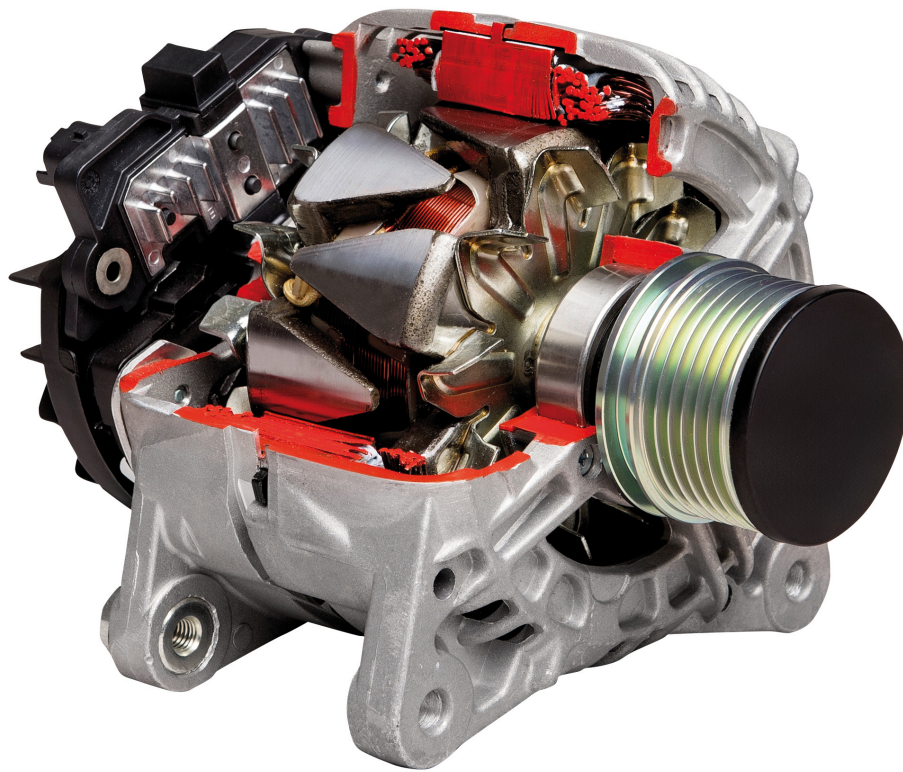


JapKo[®]



ALTERNATORS ALTERNATORI



www.japko.it

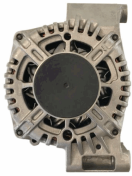
CATALOGUE
FOR CARS AND
COMMERCIAL VEHICLES

CATALOGO
PER AUTOMOBILI E VEICOLI
COMMERCIALI

Electrics

AL-101JM

Alternator



ALFA ROMEO MITO (955)
CITROEN NEMO Station wagon
FIAT 500 (312)
FIAT 500 C (312)
FIAT DOBLO (119)
FIAT FIORINO MPV / Space wagon (225_)

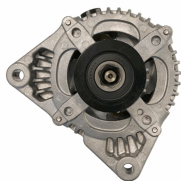
OE

13117279
13117279YQ
13197577
13243463
13283344
1539099

Alternator Charge Current [A]: 90
Belt Pulley [mm]: 54
Clamp: M8 B+M5 D+
Number of Ribs: 6
Pulleys: with free-wheel belt pulley
Voltage [V]: 14

AL-102JM

Alternator



FORD C-MAX (DM2)
FORD FIESTA V (JH_, JD_)
FORD FOCUS C-MAX
FORD FOCUS II (DA_)
FORD FOCUS II Cabriolet
FORD FOCUS II Station wagon (DA_)

OE

1229258
1229259
1255711
1255712
1477737
1477738

Alternator Charge Current [A]: 150
Belt Pulley [mm]: 54
Clamp: M8 B+ [FR-SIG-A]
Number of Ribs: 6
Pulleys: with free-wheel belt pulley
Voltage [V]: 14

AL-103JM

Alternator



ALFA ROMEO 145 (930)
ALFA ROMEO 146 (930)
ALFA ROMEO 147 (937)
ALFA ROMEO 156 (932)
ALFA ROMEO 156 Sportwagon (932)
ALFA ROMEO GT (937)

OE

46554408
46763533
46763534
46765838
46774430
46782212

Alternator Charge Current [A]: 100
Belt Pulley [mm]: 62
Clamp: M8 B+ M5 D+
Number of Ribs: 6
Pulleys: with multi-belt pulley
Voltage [V]: 14

AL-104JM

Alternator



ALFA ROMEO 147 (937)
ALFA ROMEO 156 (932)
ALFA ROMEO 156 Sportwagon (932)
ALFA ROMEO 166 (936)
FIAT BRAVA (182)
FIAT BRAVO I (182)

OE

46543023
46544329
46748353
46809068
60815944
60815953

Alternator Charge Current [A]: 120
Belt Pulley [mm]: 62
Clamp: M8 B+ M5 D+
Number of Ribs: 6
Pulleys: with free-wheel belt pulley
Voltage [V]: 14

AL-105JM

Alternator



ALFA ROMEO MITO (955)
FIAT 500 (312)
FIAT 500 C (312)
FIAT 500L
FIAT BRAVO II (198)
FIAT DOBLO (119)

OE

1202290
1202445
1535437
1673521
1705484
2706074220

Alternator Charge Current [A]: 105
Belt Pulley [mm]: 54
Clamp: M8 B+, M5 D+
Number of Ribs: 5
Pulleys: with multi-belt pulley
Voltage [V]: 14

AL-106JM

Alternator



ALFA ROMEO 159 (939)
ALFA ROMEO 159 Sportwagon (939)
ALFA ROMEO BRERA
ALFA ROMEO GIULIETTA (940)
ALFA ROMEO MITO (955)
ALFA ROMEO SPIDER (939)

OE

0000051884886
0051884886
1202272
1202274
1204456
1204457

Alternator Charge Current [A]: 120
Belt Pulley [mm]: 54
Clamp: M8 B+ M5 D+
Number of Ribs: 6
Pulleys: with free-wheel belt pulley
Voltage [V]: 14

Electrics

AL-107JM

Alternator



AUDI A1 (8X1, 8XF)
AUDI A1 Sportback (8XA, 8XK)
AUDI A2 (8Z0)
AUDI A3 (8L1)
AUDI A3 (8P1)
AUDI A3 Cabriolet (8P7)

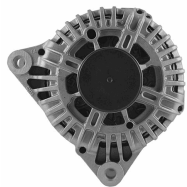
OE

021903025K
021903025T
028903026H
028903028E
028903029G
028903029GX

Alternator Charge Current [A]: 140
Belt Pulley [mm]: 56
Clamp: M8 B+ [L-DFM]
Number of Ribs: 6
Pulleys: with free-wheel belt pulley
Voltage [V]: 14

AL-108JM

Alternator



CITROEN C3 I (FC_)
CITROEN C4 Picasso I (UD_)
CITROEN C5 I (DC_)
CITROEN C8 (EA_, EB_)
LANCIA PHEDRA (179)
PEUGEOT 206 2 volumi /Coda spiovente (2A/C)

OE

12317794970
1638095180
3140069K00
3140069K00000
5702
5702AR

Alternator Charge Current [A]: 150
Belt Pulley [mm]: 54
Clamp: M8 B+ [L-DFM]
Number of Ribs: 6
Pulleys: with free-wheel belt pulley
Voltage [V]: 12

AL-109JM

Alternator



FORD B-MAX (JK)
FORD C-MAX II
FORD ECOSPORT
FORD FIESTA VI
FORD FOCUS III
FORD FOCUS III Tre volumi

OE

1376501
1387927
1506299
1506300
1685793
1704769

Alternator Charge Current [A]: 150
Belt Pulley [mm]: 54
Clamp: M8 B+ [LIN]
Number of Ribs: 6
Pulleys: with free-wheel belt pulley
Voltage [V]: 14

AL-110JM

Alternator



CITROEN BERLINGO (B9)
CITROEN BERLINGO (MF)
CITROEN C-ELYSEE
CITROEN C2 (JM_)
CITROEN C3 I (FC_)
CITROEN C3 II

OE

27060YV010
5702000000
57020000000
5702A2
5702A3
5702A4

Alternator Charge Current [A]: 90
Belt Pulley [mm]: 49
Clamp: M8 B+ [L-DFM]
Number of Ribs: 6
Pulleys: with multi-belt pulley
Voltage [V]: 12

AL-111JM

Alternator



OPEL ASTRA H (L48)
OPEL ASTRA H GTC (L08)
OPEL ASTRA H Station wagon (L35)
OPEL ASTRA H Tre volumi (L69)
VAUXHALL ASTRA Mk V (H) 2 volumi /Coda spiovente

OE

1204619
2506102
2506103
6204183
6204199
6204200

Alternator Charge Current [A]: 100
Alternator Type: incl. vacuum pump
Belt Pulley [mm]: 60
Clamp: M8 B+ [F-L]
Number of Ribs: 6
Pulleys: with free-wheel belt pulley
Voltage [V]: 14

AL-112JM

Alternator



ALFA ROMEO 159 (939)
ALFA ROMEO 159 Sportwagon (939)
FIAT GRANDE PUNTO (199)
FIAT SEDICI
FIAT STILO (192)
FIAT STILO Multi Wagon (192)

OE

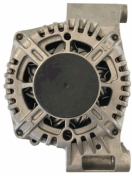
1204434
1204436
12759595
13117236
13117341
13117341AA

Alternator Charge Current [A]: 130
Belt Pulley [mm]: 62
Clamp: M8 B+ M6 DFM, M5 D+
Number of Ribs: 6
Pulleys: with free-wheel belt pulley
Voltage [V]: 14

Electrics

AL-113JM

Alternator



ALFA ROMEO MITO (955)
CITROEN NEMO Station wagon
FIAT 500 (312)
FIAT 500 C (312)
FIAT DOBLO (119)
FIAT FIORINO MPV / Space wagon (225_)

OE
1204429
13153237
13197578
13256928
13256929
1606439580

Alternator Charge Current [A]: 120
Belt Pulley [mm]: 54
Clamp: M8 B+ M5 D+
Number of Ribs: 6
Pulleys: with free-wheel belt pulley
Voltage [V]: 14

AL-114JM

Alternator



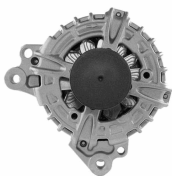
OPEL AGILA (A) (H00)
OPEL AGILA (B) (H08)
OPEL ASTRA H (L48)
OPEL ASTRA H GTC (L08)
OPEL ASTRA H Station wagon (L35)
OPEL ASTRA H Tre volumi (L69)

OE
13222935
13222936
13256931
13256932
6204258
6204259

Alternator Charge Current [A]: 120
Belt Pulley [mm]: 54
Clamp: M8 B+ [DFM-L]
Number of Ribs: 6
Pulleys: with free-wheel belt pulley
Voltage [V]: 12

AL-115JM

Alternator



AUDI A1 (8X1, 8XF)
AUDI A1 Sportback (8XA, 8XK)
AUDI A3 (8V1)
AUDI A3 Cabriolet (8V7)
AUDI A3 Limousine (8VS)
AUDI A3 Sportback (8VA)

OE
03G903016B
03G903016BX
03G903016E
03G903016EX
03G903016G
03G903016GX

Alternator Charge Current [A]: 140
Belt Pulley [mm]: 49
Clamp: M8 B+ [LIN]
Number of Ribs: 6
Pulleys: with free-wheel belt pulley
Voltage [V]: 14

AL-116JM

Alternator



MITSUBISHI L 200 (K7_T, K6_T)
MITSUBISHI PAJERO II (V3_W, V2_W, V4_W)
MITSUBISHI PAJERO II Canvas Top (V2_W, V4_W)
MITSUBISHI PAJERO SPORT (K90)

OE
1800A005
1800A243
A002T1199AT
A002T81499
A002T82899
A002T82899A

Alternator Charge Current [A]: 90
Alternator Type: incl. vacuum pump
Belt Pulley [mm]: 76
Clamp: M8 [L-S]
Number of Ribs: 2
Pulleys: Without multi-belt pulley
Voltage [V]: 12

AL-117JM

Alternator



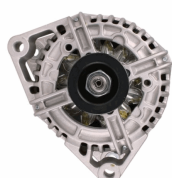
ALFA ROMEO MITO (955)
CHRYSLER YPSILON
FIAT 500 (312)
FIAT 500 C (312)
FIAT 500L
FIAT 500X

OE
1608858180
51880172
51880173
51880175
51984058
51993603

Alternator Charge Current [A]: 120
Belt Pulley [mm]: 54
Clamp: M8 B+ [LIN]
Number of Ribs: 6
Pulleys: with free-wheel belt pulley
Voltage [V]: 12

AL-118JM

Alternator



OPEL ASTRA CLASSIC (L48)
OPEL ASTRA CLASSIC Station wagon
OPEL ASTRA G 2 volumi /Coda spiovente (F48_, F08_)
OPEL ASTRA G Station wagon (F35_)
OPEL ASTRA G Tre volumi (F69_)

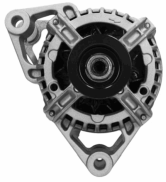
OE
09117935
10480226
1204155
13143128
13156053
2437121

Alternator Charge Current [A]: 120
Belt Pulley [mm]: 54
Clamp: M8 B+
Number of Ribs: 5
Pulleys: with multi-belt pulley
Voltage [V]: 12

Electrics

AL-119JM

Alternator



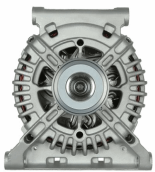
OPEL AGILA (A) (H00)
OPEL ASTRA H Station wagon (L35)
OPEL CORSA B (73_, 78_, 79_)
OPEL CORSA D
VAUXHALL AGILA Mk I (A)
VAUXHALL CORSA Mk I (B)

OE
09117932
09133599
1204136
13156052
24437119
24463064YJ

Alternator Charge Current [A]: 70
Belt Pulley [mm]: 52
Clamp: M8 B+
Number of Ribs: 5
Pulleys: with multi-belt pulley
Voltage [V]: 12

AL-120JM

Alternator



MERCEDES-BENZ CLASSE A (W169)
MERCEDES-BENZ CLASSE B (W245)

OE
6401540102
6401540202
6401540302
6401540402
6401540502
640154050280

Alternator Charge Current [A]: 150
Belt Pulley [mm]: 50
Clamp: M8 B+ [LIN]
Number of Ribs: 5
Pulleys: with free-wheel belt pulley
Voltage [V]: 12

AL-121JM

Alternator



CITROEN BERLINGO (B9)
CITROEN BERLINGO (K9)
CITROEN C-ELYSEE
CITROEN C3 AIRCROSS II
CITROEN C3 II
CITROEN C3 III (SX)

OE
1606859180
1609957280
1611285580
1612458880
1623862880
1638094380

Alternator Charge Current [A]: 150
Belt Pulley [mm]: 54
Clamp: M8 B+ [LIN]
Number of Ribs: 6
Pulleys: with free-wheel belt pulley
Voltage [V]: 14

AL-122JM

Alternator



AUDI A2 (8Z0)
AUDI A3 (8L1)
AUDI A3 (8P1)
AUDI A3 Cabriolet (8P7)
AUDI A3 Sportback (8PA)
AUDI TT (8N3)

OE
021903025H
021903025J
028903028C
028903028CX
028903028D
028903028DX

Alternator Charge Current [A]: 110
Belt Pulley [mm]: 56
Clamp: M8 B+ [L-DFM]
Number of Ribs: 6
Pulleys: with multi-belt pulley
Voltage [V]: 14

AL-123JM

Alternator



AUDI A2 (8Z0)
AUDI A3 (8L1)
AUDI TT (8N3)
AUDI TT Roadster (8N9)
FORD GALAXY (WGR)
SEAT ALHAMBRA (7V8, 7V9)

OE
038903018LX
038903018P
038903018PX
038903023
038903023K
038903023L

Alternator Charge Current [A]: 90
Belt Pulley [mm]: 56
Clamp: M8 B+ [L-DFM]
Number of Ribs: 6
Pulleys: with free-wheel belt pulley
Voltage [V]: 12

AL-124JM

Alternator



ALFA ROMEO AR 6 Furgonato (280)
ALFA ROMEO AR 8 Furgonato (280)
ALFA ROMEO AR 8 Pianale piatto/Telaio (280)
FIAT 127
FIAT 127 Panorama
FIAT 131

OE
116760506000
116760506100
1516538R
1516607R
2022607
2995030

Alternator Charge Current [A]: 55
Belt Pulley [mm]: 86
Clamp: M6,D+
Number of Ribs: 1
Pulleys: Without multi-belt pulley
Voltage [V]: 12

Electrics

AL-125JM

Alternator



AUTOBIANCHI Y10
FIAT PANDA (141A_)
FIAT TIPO (160)
FIAT UNO (146A/E)
LANCIA Y10 (156)

OE

000007565832
0000046231660
11572630
11572690
11572700
46231657

Alternator Charge Current [A]: 55
Belt Pulley [mm]: 65
Clamp: M6,D+
Number of Ribs: 1
Pulleys: Without multi-belt pulley
Voltage [V]: 12

AL-126JM

Alternator



FIAT 127
FIAT CINQUECENTO (170)
FIAT PANDA (141A_)
FIAT SEICENTO (187)
FIAT UNO (146A/E)
LANCIA A 112

OE

0003934961
2702061013
2702061100
2702061130
4242498
4274759

Alternator Charge Current [A]: 55
Belt Pulley [mm]: 65
Clamp: M6,D+
Number of Ribs: 1
Pulleys: Without multi-belt pulley
Voltage [V]: 12

AL-127JM

Alternator



ALFA ROMEO 33 (907A)
ALFA ROMEO 6 (119)
ALFA ROMEO 75 (162B)
FIAT CROMA (154)
LANCIA THEMA (834)
LANCIA THEMA SW (834)

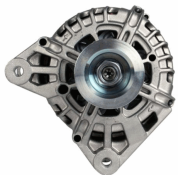
OE

1204072
1204344
294394800
46231726
46231758
4765931

Alternator Charge Current [A]: 65
Belt Pulley [mm]: 93
Clamp: M6,D+
Number of Ribs: 2
Pulleys: Without multi-belt pulley
Voltage [V]: 12

AL-128JM

Alternator



RENAULT CLIO Grandtour (KR0/1_)
RENAULT CLIO Grandtour IV
RENAULT CLIO III (BR0/1, CR0/1)
RENAULT CLIO IV
RENAULT MODUS / GRAND MODUS (F/JP0_)
RENAULT TWINGO II (CN0_)

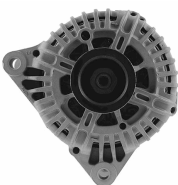
OE

231000646R
7711368178
7711368602
7711368683
7711497091
7711497092

Alternator Charge Current [A]: 120
Belt Pulley [mm]: 55
Clamp: M8 B+ [BSS]
Number of Ribs: 7
Pulleys: with multi-belt pulley
Voltage [V]: 14

AL-129JM

Alternator



CITROEN BERLINGO (MF)
CITROEN C1 (PM_, PN_)
CITROEN C2 (JM_)
CITROEN C3 I (FC_)
CITROEN C3 Pluriel (HB_)
CITROEN C4 Coupé (LA_)

OE

27060YU020
27060YV020
3140073J00
3140073J00000
5702A6
5702A7

Alternator Charge Current [A]: 150
Belt Pulley [mm]: 54
Clamp: M8 B+ [L-DFM]
Number of Ribs: 6
Pulleys: with multi-belt pulley
Voltage [V]: 14

AL-130JM

Alternator



ABARTH PUNTO EVO (199_)
ALFA ROMEO GIULIETTA (940)
ALFA ROMEO MITO (955)
FIAT 500 (312)
FIAT 500 C (312)
FIAT 500L

OE

51788658
51854903
51927506
52003527
52003621
71796446

Alternator Charge Current [A]: 120
Belt Pulley [mm]: 54
Clamp: M8 B+ M5 D+
Number of Ribs: 5
Pulleys: with free-wheel belt pulley
Voltage [V]: 14

Electrics

AL-131JM

Alternator



DACIA DOKKER
DACIA DUSTER
DACIA LODGY
DACIA LOGAN II
DACIA LOGAN MCV II
DACIA SANDERO II

OE

231000026R
7711368381
7711497409
8200390676
8200660034

Alternator Charge Current [A]: 160
Belt Pulley [mm]: 55
Clamp: M8 B+ [BSS]
Number of Ribs: 6
Pulleys: with free-wheel belt pulley
Voltage [V]: 14

AL-132JM

Alternator



CHRYSLER DELTA
FIAT FREEMONT (JF_)

OE

56029574AA
K56029574AA
K56029574AB
P56029574AA
TT13138

Alternator Charge Current [A]: 130
Belt Pulley [mm]: 54
Clamp: M8 B+ [LIN]
Number of Ribs: 6
Pulleys: with free-wheel belt pulley
Voltage [V]: 14

AL-133JM

Alternator



TOYOTA AURIS (NRE15_, ZZE15_, ADE15_,
ZRE15_, NDE15_)
TOYOTA AVENSIS
TOYOTA AVENSIS (T25_)
TOYOTA AVENSIS Station wagon (T25)
TOYOTA AVENSIS Station wagon (ZRT27,

OE

270600G010
270600G011
270600G01184
270600R060
270600R070
270600R071

Alternator Charge Current [A]: 100
Belt Pulley [mm]: 58
Clamp: [RLO-DFM-IG-L]
Number of Ribs: 7
Pulleys: with free-wheel belt pulley
Voltage [V]: 14

AL-134JM

Alternator



LEXUS IS II (GSE2_, ALE2_, USE2_)
TOYOTA AURIS (NRE15_, ZZE15_, ADE15_,
ZRE15_, NDE15_)
TOYOTA AVENSIS
TOYOTA AVENSIS Station wagon (ZRT27,
ADT27)

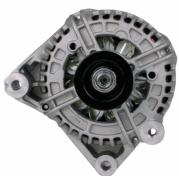
OE

0210802470
270600G021
270600R080
2706026030
270602603084
2706026060

Alternator Charge Current [A]: 150
Belt Pulley [mm]: 58
Clamp: M6 B+ [RLO-DFM-IG-L]
Number of Ribs: 7
Pulleys: with free-wheel belt pulley
Voltage [V]: 14

AL-135JM

Alternator



BMW 3 (E46)
BMW 3 Cabriolet (E46)
BMW 3 Compact (E46)
BMW 3 Coupe (E46)
BMW 3 Touring (E46)
BMW X3 (E83)

OE

12317789980
12317789983
12317797660
12317797661
7789980
7789980A101

Alternator Charge Current [A]: 150
Belt Pulley [mm]: 54
Clamp: M8 B+ [L-DFM]
Number of Ribs: 6
Pulleys: with multi-belt pulley
Voltage [V]: 12

AL-136JM

Alternator



FORD FIESTA V (JH_, JD_)
FORD FUSION (JU_)
MAZDA 2 (DY)

OE

1140135
1464756
1477856
2S6T10300AA
2S6T10300AB
2S6T10300AC

Alternator Charge Current [A]: 80
Belt Pulley [mm]: 54
Clamp: M8 B+ [FR-SIG-A]
Number of Ribs: 6
Pulleys: with free-wheel belt pulley
Voltage [V]: 14

Electrics

AL-137JM

Alternator



BMW 1 (E87)
BMW 3 (E90)
BMW 3 Cabriolet (E93)
BMW 3 Coupé (E92)
BMW 3 Touring (E91)

OE

12317790548
12317795620
12317797519
12317797520
12317799180
12317799181

Alternator Charge Current [A]: 150
Belt Pulley [mm]: 54
Clamp: M8 B+ [COM]
Number of Ribs: 6
Pulleys: with multi-belt pulley
Voltage [V]: 14

AL-138JM

Alternator



FIAT DUCATO Autobus (244, Z_)
FIAT DUCATO Autobus (250)
FIAT DUCATO Furgonato (244)
FIAT DUCATO Furgonato (250)
FIAT DUCATO Pianale piatto/Telaio (244)
FIAT DUCATO Pianale piatto/Telaio (250)

OE

1506770R
2995390
500059504
504009977
504009978
5801377162

Alternator Charge Current [A]: 140
Belt Pulley [mm]: 55
Clamp: M8 B+ [L-DFM]
Number of Ribs: 7
Pulleys: with multi-belt pulley
Voltage [V]: 14

AL-139JM

Alternator



DACIA DOKKER
DACIA DUSTER
DACIA LODGY
DACIA LOGAN (LS_)
DACIA LOGAN II
DACIA LOGAN MCV (KS_)

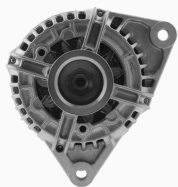
OE

1121540202
1121542002
2310000Q0M
2310000Q2J
2310000Q2JEX
2310000QBH

Alternator Charge Current [A]: 150
Belt Pulley [mm]: 55
Clamp: M8 B+ [L-DFM]
Number of Ribs: 6
Pulleys: with free-wheel belt pulley
Voltage [V]: 14

AL-140JM

Alternator



IVECO DAILY III Autobus
IVECO DAILY III Cassone / Furgonato /
Promiscuo
IVECO DAILY III Pianale piatto/Telaio
RENAULT MASCOTT Pianale piatto/Telaio (UH_,
HH_)

OE

1524013R
2995544
2995548
2995982
2995984
47129299

Alternator Charge Current [A]: 120
Belt Pulley [mm]: 68
Clamp: M8 B+ [L-DFM]
Number of Ribs: 6
Pulleys: with multi-belt pulley
Voltage [V]: 14

AL-141JM

Alternator



FORD FIESTA V (JH_, JD_)
FORD FUSION (JU_)

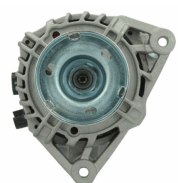
OE

1140135
1303447
1464756
1464788
1477856
1477859

Alternator Charge Current [A]: 80
Belt Pulley [mm]: 54
Clamp: M8 B+ [FR-SIG-A]
Number of Ribs: 6
Pulleys: with multi-belt pulley
Voltage [V]: 14

AL-142JM

Alternator



FORD FOCUS (DAW, DBW)
FORD FOCUS Station wagon (DNW)
FORD FOCUS Tre volumi (DFW)

OE

1079312
1097306
1126051
1138231
1144182
1144183

Alternator Charge Current [A]: 90
Belt Pulley [mm]: 78
Clamp: M8 B+ [FR-SIG-A]
Pulleys: Without multi-belt pulley
Voltage [V]: 14

Electrics

AL-143JM

Alternator



BMW 1 (E81)
BMW 1 (E87)
BMW 1 Cabriolet (E88)
BMW 1 Coupé (E82)
BMW 3 (E90)
BMW 3 Cabriolet (E93)

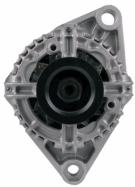
OE

12317802261
12317802619
7802261
7802619

Alternator Charge Current [A]: 180
Belt Pulley [mm]: 53
Clamp: M6 B+ [COM-BSS]
Number of Ribs: 6
Pulleys: with multi-belt pulley
Voltage [V]: 14

AL-144JM

Alternator



FIAT BRAVA (182)
FIAT BRAVO I (182)
FIAT DOBLO (119)
FIAT MAREA (185)
FIAT MAREA Weekend (185)
FIAT MULTIPLA (186)

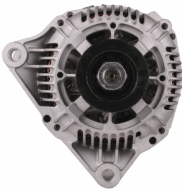
OE

46420963
46532667
46532668
46532669
468130061
46813061

Alternator Charge Current [A]: 105
Belt Pulley [mm]: 60
Clamp: M8
Number of Ribs: 5
Pulleys: with multi-belt pulley
Voltage [V]: 12

AL-145JM

Alternator



CITROEN BERLINGO (MF)
CITROEN C5 I (DC_)
CITROEN C5 I Break (DE_)
CITROEN EVASION (22, U6)
CITROEN XANTIA (X2)
CITROEN XANTIA Break (X2)

OE

1516470R
1516478R
1516492R
57052A
57052B
57052C

Alternator Charge Current [A]: 90
Belt Pulley [mm]: 55
Clamp: M8 B+,M5 D+ W
Number of Ribs: 6
Pulleys: with multi-belt pulley
Voltage [V]: 14

AL-146JM

Alternator



AUTOBIANCHI Y10
FIAT 126
FIAT 127
FIAT 127 Panorama
FIAT 147
FIAT CINQUECENTO (170)

OE

076903023G
43231721
4395131
4419109
4434084
4470266

Alternator Charge Current [A]: 65
Belt Pulley [mm]: 58
Clamp: M6
Number of Ribs: 5
Pulleys: with multi-belt pulley
Voltage [V]: 12

AL-147JM

Alternator



TOYOTA YARIS (SCP9_, NSP9_, KSP9_, NCP9_, ZSP9_)

OE

270600Q060
2706040040
2706040041

Alternator Charge Current [A]: 80
Belt Pulley [mm]: 80
Clamp: M6 B+ [RLO-DFM-IG-L]
Number of Ribs: 6
Pulleys: with multi-belt pulley
Voltage [V]: 14

AL-148JM

Alternator



MERCEDES-BENZ CLASSE C (W202)
MERCEDES-BENZ CLASSE C Station wagon (S202)
MERCEDES-BENZ CLASSE E (W210)
MERCEDES-BENZ CLASSE E Station wagon (S210)

OE

0101545902
010154590280
0101546302
0101549502
010154950280
0101549602

Alternator Charge Current [A]: 120
Belt Pulley [mm]: 50
Clamp: M8 B+ M5 D+
Number of Ribs: 6
Pulleys: with free-wheel belt pulley
Voltage [V]: 14

Electrics

AL-149JM

Alternator



CITROEN JUMPER Autobus (230P)
 CITROEN JUMPER Autobus (244, Z_)
 CITROEN JUMPER Furgonato (230L)
 CITROEN JUMPER Furgonato (244)
 CITROEN JUMPER Pianale piatto/Telaio (230)
 CITROEN JUMPER Pianale piatto/Telaio (244)

OE

12090113
 500345767
 500371244
 504033459
 5702A8
 5702A9

Alternator Charge Current [A]: 150
 Belt Pulley [mm]: 60
 Clamp: M5 D+
 Number of Ribs: 6
 Pulleys: with multi-belt pulley
 Voltage [V]: 12

AL-150JM

Alternator



AUDI 80 Avant (8C, B4)
 AUDI 90 (89, 89Q, 8A, B3)
 BAOLONG LINGHUI
 BAOLONG LINGJUN
 BAOLONG LINGQI
 CHEVROLET CLASSIC

OE

038520135A
 1516473R
 1516529R
 2997074
 38520135A
 4152610

Alternator Charge Current [A]: 35
 Belt Pulley [mm]: 95
 Clamp: M6
 Number of Ribs: 1
 Pulleys: Without multi-belt pulley
 Voltage [V]: 24

AL-151JM

Alternator



LAND ROVER DEFENDER Cabrio (LD)
 LAND ROVER DEFENDER Station Wagon (LD)

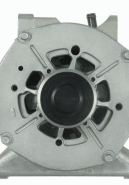
OE

1372736
 1374171
 1404791
 1474021
 1572736
 1581842

Alternator Charge Current [A]: 150
 Belt Pulley [mm]: 59
 Clamp: M8 B+ [L-DFM]
 Number of Ribs: 6
 Pulleys: with free-wheel belt pulley
 Voltage [V]: 14

AL-152JM

Alternator



MERCEDES-BENZ CLASSE A (W168)
 MERCEDES-BENZ Vaneo (414)

OE

6681540102
 668154010280
 6681540202
 668154020280
 6681540302
 668154030280

Alternator Charge Current [A]: 150
 Belt Pulley [mm]: 50
 Clamp: M8 B+ [L-DFM]
 Number of Ribs: 5
 Pulleys: with multi-belt pulley
 Voltage [V]: 12

AL-153JM

Alternator



ABARTH PUNTO EVO (199)
 ALFA ROMEO MITO (955)
 FIAT 500 (312)
 FIAT 500 C (312)
 FIAT 500L
 FIAT BRAVO II (198)

OE

1202288
 1202463
 1535436
 1673520
 1705483
 1719535

Alternator Charge Current [A]: 105
 Belt Pulley [mm]: 54
 Clamp: M8 B+, M5 D+
 Number of Ribs: 4
 Pulleys: with multi-belt pulley
 Voltage [V]: 14

AL-154JM

Alternator



NISSAN PATHFINDER
 NISSAN PRIMERA (P12)
 NISSAN PRIMERA Hatchback (P12)
 NISSAN PRIMERA Station wagon (WP12)
 NISSAN TERRANO I (WD21)
 RENAULT GRAND SCÉNIC II (JM0/1_)

OE

2303011252
 2310000Q0F
 2310000Q0L
 2310000Q2F
 2310000QAN
 23100AW300

Alternator Charge Current [A]: 150
 Belt Pulley [mm]: 49
 Clamp: M8 B+ [L-DFM]
 Number of Ribs: 7
 Pulleys: with multi-belt pulley
 Voltage [V]: 14

Electrics

AL-155JM

Alternator



NISSAN TERRANO
 RENAULT ESPACE IV (JK0/1_)
 RENAULT LAGUNA Coupé (DT0/1)
 RENAULT LAGUNA II (BG0/1_)
 RENAULT LAGUNA II Grandtour (KG0/1_)
 RENAULT LAGUNA III (BT0/1)

OE

1204193
 2310000Q0J
 231001202R
 4431340
 7711368437
 8200404459

Alternator Charge Current [A]: 150
 Belt Pulley [mm]: 49
 Clamp: M8 B+ [L-DFM]
 Number of Ribs: 7
 Pulleys: with free-wheel belt pulley
 Voltage [V]: 14

AL-156JM

Alternator



FIAT BRAVA (182)
 PEUGEOT 307 Break (3E)
 RENAULT MEGANE I (BA0/1_)
 RENAULT MEGANE I Cabriolet (EA0/1_)
 RENAULT MEGANE I Classic (LA0/1_)
 RENAULT MEGANE I Coach (DA0/1_)

OE

12317519621
 12317519622
 1516403R
 4403214
 4403215
 4500044

Alternator Charge Current [A]: 110
 Belt Pulley [mm]: 55
 Clamp: M8 D+ W
 Number of Ribs: 6
 Pulleys: with multi-belt pulley
 Voltage [V]: 12

AL-157JM

Alternator



SMART CABRIO (450)
 SMART CITY-COUPE (450)
 SMART CROSSBLADE (450)
 SMART FORTWO Cabrio (450)
 SMART FORTWO Coupé (450)
 SMART ROADSTER (452)

OE

0002801V002
 0002801V003
 0002801V004
 0002801V005
 0002801V006
 0002801V007

Alternator Charge Current [A]: 75
 Belt Pulley [mm]: 58
 Clamp: M6 B+ M5 D+ M5 ,PHIN
 Number of Ribs: 4
 Pulleys: with multi-belt pulley
 Voltage [V]: 14

AL-158JM

Alternator



ALFA ROMEO GIULIETTA (940)
 FIAT 500L
 FIAT 500X
 FIAT TIPO (356)
 FIAT TIPO 2 volumi /Coda spiovente (356_)
 FIAT TIPO Station wagon (356_)

OE

17197917
 51884351
 51944891
 71796428

Alternator Charge Current [A]: 120
 Belt Pulley [mm]: 54
 Clamp: M8 B+ [LIN]
 Number of Ribs: 6
 Pulleys: with free-wheel belt pulley
 Voltage [V]: 14

AL-159JM

Alternator



FIAT SEDICI
 OPEL AGILA (B) (H08)
 SUZUKI ALTO (HA24)
 SUZUKI BALENO (EG)
 SUZUKI BALENO 2 volumi /Coda spiovente (EG)
 SUZUKI BALENO Station wagon (EG)

OE

3140055L00
 3140055L01
 3140055L02000
 3140059J00
 3140065D00
 3140065D01

Alternator Charge Current [A]: 70
 Belt Pulley [mm]: 55
 Clamp: M6 B+ [IG-L]
 Number of Ribs: 4
 Pulleys: with multi-belt pulley
 Voltage [V]: 12

AL-160JM

Alternator



FIAT DOBLO (119)
 FIAT PALIO (178BX)
 FIAT PALIO Weekend (178DX)
 FIAT PANDA (169)
 FIAT PUNTO (176)
 FIAT PUNTO (188)

OE

43420960
 46231693
 46407644
 46407647
 46419297
 46420960

Alternator Charge Current [A]: 75
 Belt Pulley [mm]: 60
 Clamp: M8
 Number of Ribs: 4
 Pulleys: with multi-belt pulley
 Voltage [V]: 12

Electrics

AL-161JM

Alternator



CHEVROLET CRUZE (J300)
 CHEVROLET CRUZE 2 volumi /Coda spiovente (J305)
 CHEVROLET CRUZE Station Wagon (J308)
 CHEVROLET TRAX
 OPEL ASTRA GTC J

OE

1202117
 1202118
 1202261
 1202264
 1202328
 1202338

Alternator Charge Current [A]: 140
 Belt Pulley [mm]: 60
 Clamp: M8 B+ [DFM-RVC]
 Number of Ribs: 6
 Pulleys: with free-wheel belt pulley
 Voltage [V]: 14

AL-162JM

Alternator



TOYOTA HILUX II Pick-up (RN6_, RN5_, LN6_, YN6_, YN5_, LN)
 TOYOTA HILUX III Pick-up (TGN1_, GGN2_, GGN1_, KUN2_, KUN)
 TOYOTA LAND CRUISER (KDJ12_, GRJ12_)
 TOYOTA LAND CRUISER 150 (KDJ15_, GRJ15_)

OE

270600L010
 270600L020
 270600L021
 270600L022
 270600L02284
 270600L030

Alternator Charge Current [A]: 100
 Belt Pulley [mm]: 58
 Clamp: M6 B+ [S-DFM-IG-L]
 Number of Ribs: 7
 Pulleys: with free-wheel belt pulley
 Voltage [V]: 14

AL-163JM

Alternator



ALFA ROMEO 145 (930)
 ALFA ROMEO 146 (930)
 ALFA ROMEO 155 (167)
 ALFA ROMEO 6 (119)
 ALFA ROMEO 75 (162B)
 ALFA ROMEO 90 (162)

OE

0005927867
 110073
 4423623
 46231700
 46231735
 46231740

Alternator Charge Current [A]: 65
 Belt Pulley [mm]: 62
 Clamp: M6,D+
 Number of Ribs: 5
 Pulleys: with multi-belt pulley
 Voltage [V]: 14

AL-164JM

Alternator



CHEVROLET CORSA Pick-up
 CHEVROLET CORSA Station wagon
 CHEVROLET CORSA Tre volumi
 HONDA CIVIC VII Hatchback (EU, EP, EV)
 OPEL ASTRA G 2 volumi /Coda spiovente (F48_, F08_)

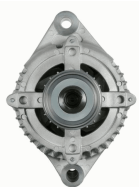
OE

1204157
 1204158
 136101
 2506101
 31100PLZD00
 6204182

Alternator Charge Current [A]: 100
 Alternator Type: incl. vacuum pump
 Belt Pulley [mm]: 60
 Clamp: M8 B+ [L-W]
 Number of Ribs: 6
 Pulleys: with multi-belt pulley
 Voltage [V]: 14

AL-165JM

Alternator



ALFA ROMEO GIULIA (952_)
 ALFA ROMEO GIULIETTA (940)
 FIAT 500L
 FIAT 500X
 FIAT TIPO (356)
 FIAT TIPO 2 volumi /Coda spiovente (356_)

OE

51907673
 51929089
 71796431
 71796434

Alternator Charge Current [A]: 150
 Belt Pulley [mm]: 54
 Clamp: M8 B+ [LIN]
 Number of Ribs: 6
 Pulleys: with free-wheel belt pulley
 Voltage [V]: 14

AL-166JM

Alternator



MITSUBISHI CARISMA (DA_)
 MITSUBISHI CARISMA Tre volumi (DA_)
 MITSUBISHI SPACE STAR (DG_A)
 RENAULT AVANTIME (DEO_)
 RENAULT CLIO II (BB0/1/2_, CB0/1/2_)
 RENAULT LAGUNA I (B56_, 556_)

OE

1800A043
 2310000Q0A
 2310000Q0D
 2310000Q0E
 2310000Q0K
 2310000Q1F

Alternator Charge Current [A]: 120
 Belt Pulley [mm]: 49
 Clamp: M8 B+ [L-DFM]
 Number of Ribs: 6
 Pulleys: with free-wheel belt pulley
 Voltage [V]: 14

Electrics

AL-167JM

Alternator



CHRYSLER 300 C (LX)
CHRYSLER 300 C Touring (LX)
JEEP COMMANDER (XK)
JEEP GRAND CHEROKEE III (WH, WK)
MERCEDES-BENZ CLASSE C (W203)
MERCEDES-BENZ CLASSE C (W204)

OE
0009062700
0009062700087
000906270080
000906270087
04801250AA
04801250AB

Alternator Charge Current [A]: 180
Belt Pulley [mm]: 50
Clamp: M8 B+ [LIN]
Number of Ribs: 7
Pulleys: with free-wheel belt pulley
Voltage [V]: 12

AL-168JM

Alternator



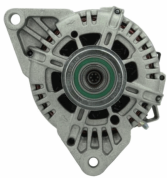
ALFA ROMEO 145 (930)
ALFA ROMEO 155 (167)
FIAT BARCHETTA (183)
FIAT BRAVA (182)
FIAT BRAVO I (182)
FIAT COUPE (FA/175)

OE
0046430531
1516426R
46231670
46231671
46231722
46231724

Alternator Charge Current [A]: 100
Belt Pulley [mm]: 62
Clamp: M8
Number of Ribs: 6
Pulleys: with multi-belt pulley
Voltage [V]: 12

AL-169JM

Alternator



HYUNDAI ELANTRA Tre volumi (MD, UD)
HYUNDAI i20
HYUNDAI i20 (PB, PBT)
HYUNDAI i30 (FD)
HYUNDAI i30 (GD)
HYUNDAI i30 Coupé

OE
3730002A651
373002A400
373002A401
373002A450
373002A600
373002A601

Alternator Charge Current [A]: 130
Belt Pulley [mm]: 57
Clamp: M8 B+ [C-L-FR]
Number of Ribs: 5
Pulleys: with free-wheel belt pulley
Voltage [V]: 14

AL-170JM

Alternator



AUDI A2 (8Z0)
SEAT ALHAMBRA (7V8, 7V9)
SEAT ALTEA (5P1)
SEAT ALTEA XL (5P5, 5P8)
SEAT AROSA (6H)
SEAT CORDOBA (6K2)

OE
028903018RX
028903026P
0303903023N
036903018B
036903018BX
036903024D

Alternator Charge Current [A]: 110
Belt Pulley [mm]: 50
Clamp: M8 B+ [L-DFM]
Number of Ribs: 6
Pulleys: with multi-belt pulley
Voltage [V]: 12

AL-171JM

Alternator



HYUNDAI ELANTRA (XD)
HYUNDAI ELANTRA Tre volumi (XD)
HYUNDAI GRANDEUR (TG)
HYUNDAI i30 (FD)
HYUNDAI i30 CW (FD)
HYUNDAI SANTA FÉ I (SM)

OE
2730027012
3730027010
3730027011
3730027012
3730027012AT
3730027013

Alternator Charge Current [A]: 120
Alternator Type: incl. vacuum pump
Belt Pulley [mm]: 60
Clamp: M8 B+ [L-S]
Number of Ribs: 6
Pulleys: with free-wheel belt pulley
Voltage [V]: 14

AL-172JM

Alternator



FIAT 500 (312)
FIAT 500 C (312)
FIAT DOBLO (119)
FIAT FIORINO MPV / Space wagon (225_)
FIAT GRANDE PUNTO (199)
FIAT IDEA

OE
1204432
13117278
13256930
13283343
1539098
1571296

Alternator Charge Current [A]: 90
Belt Pulley [mm]: 54
Clamp: M8 B+M5 D+
Number of Ribs: 6
Pulleys: with multi-belt pulley
Voltage [V]: 14

Electrics

AL-173JM

Alternator



MINI MINI (R50, R53)

OE

12317790879
2706033050
2706033051
7790879

Alternator Charge Current [A]: 100
Belt Pulley [mm]: 60
Clamp: M8 [C-FR-IG-L]
Number of Ribs: 7
Pulleys: with free-wheel belt pulley
Voltage [V]: 12

AL-174JM

Alternator



ALFA ROMEO GT (937)
CITROEN C5 I (DC_)
CITROEN C5 I Break (DE_)
CITROEN C8 (EA_, EB_)
CITROEN XANTIA (X2)
CITROEN XANTIA Break (X2)

OE

130722
3140068D00
3140068D00000
3140068D01
3140068D02
3140068D02000

Alternator Charge Current [A]: 150
Belt Pulley [mm]: 54
Clamp: M8 B+ M5 D+
Number of Ribs: 6
Pulleys: with free-wheel belt pulley
Voltage [V]: 14

AL-175JM

Alternator



TOYOTA YARIS (SCP1_, NLP1_, NCP1_)
TOYOTA YARIS VERSO (_NLP2_, _NCP2_)

OE

2706033010
2706033020
2706033040

Alternator Charge Current [A]: 90
Belt Pulley [mm]: 60
Clamp: M6 [FR-IG-L]
Number of Ribs: 5
Pulleys: with free-wheel belt pulley
Voltage [V]: 12

AL-176JM

Alternator



FIAT CROMA (194)
FIAT GRANDE PUNTO (199)
FIAT STILO (192)
FIAT STILO Multi Wagon (192)
OPEL ASTRA H (L48)
OPEL ASTRA H GTC (L08)

OE

1204433
13117340
6204187
6204293
71755143
75814308

Alternator Charge Current [A]: 105
Belt Pulley [mm]: 62
Clamp: M8 B+ M5 D+
Number of Ribs: 6
Pulleys: with free-wheel belt pulley
Voltage [V]: 14

AL-177JM

Alternator



FORD TRANSIT Autobus (FD_-, FB_-, FS_-, FZ_-, FC_-,)
FORD TRANSIT Furgonato (FA_-,)
FORD TRANSIT Pianale piatto/Telaio (FM_-, FN_-,)

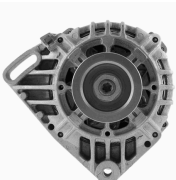
OE

1498518
1516508R
2C1T1 0300 BA
2C1T1 0300 BB
2C1T10300BA
2C1T10300BB

Alternator Charge Current [A]: 110
Belt Pulley [mm]: 59
Clamp: M6 B+ [L-DFM-S]
Number of Ribs: 7
Pulleys: with free-wheel belt pulley
Voltage [V]: 14

AL-178JM

Alternator



DACIA LOGAN (LS_)
DACIA LOGAN II
DACIA LOGAN MCV II
DACIA SANDERO
DACIA SANDERO II
RENAULT CLIO II (BB0/1/2_, CB0/1/2_)

OE

130712
2310000G1H
2310000GAT
2310000Q1C
2310000Q1D
2310000Q1H

Alternator Charge Current [A]: 95
Belt Pulley [mm]: 65
Clamp: M8 B+[L]
Number of Ribs: 3
Pulleys: with multi-belt pulley
Voltage [V]: 14

Electrics

AL-179JM

Alternator



HYUNDAI GALLOPER I
HYUNDAI GALLOPER II (JK-01)
HYUNDAI TERRACAN (HP)
MITSUBISHI GALLOPER (JK-01)

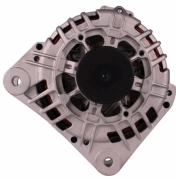
OE

3730042540
3730042542
3730042860
3730042861
3730042862
3730042863

Alternator Charge Current [A]: 90
Alternator Type: incl. vacuum pump
Belt Pulley [mm]: 76
Clamp: M6 B+ [L-S]
Number of Ribs: 2
Pulleys: Without multi-belt pulley
Voltage [V]: 14

AL-180JM

Alternator



DACIA LOGAN (LS_)
DACIA LOGAN MCV (KS_)
DACIA LOGAN Pick-up (US_)
DACIA SANDERO
RENAULT CLIO IV
RENAULT KANGOO (KC0/1_)

OE

1204189
1204489
2310000QAU
2310000QBE
2310000QBG
2310000QOE

Alternator Charge Current [A]: 125
Belt Pulley [mm]: 54
Clamp: M8 B+[L]
Number of Ribs: 5
Pulleys: with free-wheel belt pulley
Voltage [V]: 12

AL-181JM

Alternator



TOYOTA YARIS (SCP1_, NLP1_, NCP1_)
TOYOTA YARIS VERSO (_NLP2_, _NCP2_)

OE

270600J010
270600J020
270600J030
270600J040
2706023040
270600J020

Alternator Charge Current [A]: 90
Belt Pulley [mm]: 55
Clamp: M6 [FR-IG-L]
Number of Ribs: 6
Pulleys: with multi-belt pulley
Voltage [V]: 12

AL-182JM

Alternator



TOYOTA AVENSIS (T25_)
TOYOTA AVENSIS Station wagon (T25)
TOYOTA AVENSIS Tre volumi (T25)
TOYOTA COROLLA (ZZE12_, NDE12_, ZDE12_)
TOYOTA COROLLA (_E11_)
TOYOTA COROLLA Compact (_E11_)

OE

2706027040
270602704084
2706027050
2706027060
2706027070
2706027090

Alternator Charge Current [A]: 130
Belt Pulley [mm]: 58
Clamp: M6 B+ [S-DFM-IG-L]
Number of Ribs: 5
Pulleys: with free-wheel belt pulley
Voltage [V]: 14

AL-183JM

Alternator



FORD MAVERICK (UDS, UNS)
NISSAN TERRANO II (R20)

OE

1959007
2310069T60
231007F000
231007F001

Alternator Charge Current [A]: 70
Belt Pulley [mm]: 80
Clamp: M8
Number of Ribs: 1
Pulleys: Without multi-belt pulley
Voltage [V]: 12

AL-184JM

Alternator



DACIA LOGAN (LS_)
DACIA LOGAN MCV (KS_)
DACIA LOGAN Pick-up (US_)
DACIA SANDERO
RENAULT CLIO II (BB0/1/2_, CB0/1/2_)
RENAULT ESPACE III (JE0_)

OE

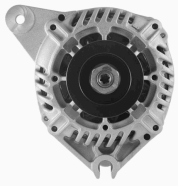
2310000QBC
27060165FL
6001548061
6601548061
7700101274
7700421477

Alternator Charge Current [A]: 98
Belt Pulley [mm]: 55
Clamp: M8 B+ [L-DFM]
Number of Ribs: 6
Pulleys: with multi-belt pulley
Voltage [V]: 14

Electrics

AL-185JM

Alternator



CITROEN AX (ZA-)
CITROEN SAXO (S0, S1)
CITROEN XSARA (N1)
CITROEN XSARA Break (N2)
CITROEN ZX Break (N2)
NISSAN MICRA II (K11)

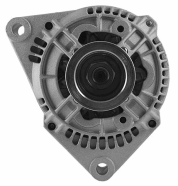
OE

12312244818
12312244819
130555
5701A5
5701A6
5701A6(X)

Alternator Charge Current [A]: 95
Belt Pulley [mm]: 55
Clamp: M8
Number of Ribs: 5
Pulleys: with multi-belt pulley
Voltage [V]: 12

AL-186JM

Alternator



DAEWOO KORANDO (KJ)
DAEWOO KORANDO Cabrio (KJ)
DAEWOO MUSSO (FJ)
MERCEDES-BENZ 190 (W201)
MERCEDES-BENZ CLASSE C (W202)
MERCEDES-BENZ CLASSE C Station wagon

OE

0081545102
0081545202
008154520280
0081549602
008154960280
0081549702

Alternator Charge Current [A]: 90
Belt Pulley [mm]: 55
Clamp: M8 B+ M5 D+
Number of Ribs: 6
Pulleys: with multi-belt pulley
Voltage [V]: 14

AL-187JM

Alternator



AUDI A3 Cabriolet (8P7)
AUDI A4 (8EC, B7)
AUDI A4 Avant (8ED, B7)
CHRYSLER SEBRING (JS)
CHRYSLER SEBRING Cabriolet (JS)
DODGE AVENGER

OE

021903026
021903026A
021903026B
021903026G
021903026GX
021903026L

Alternator Charge Current [A]: 180
Belt Pulley [mm]: 56
Clamp: M8 B+ [L-DFM]
Number of Ribs: 6
Pulleys: with free-wheel belt pulley
Voltage [V]: 14

AL-188JM

Alternator



FORD SCORPIO II (GFR, GGR)
FORD SCORPIO II Station wagon (GMR, GGR)

OE

1406060
1406068
1406091
1406105
1516401R
1668894

Alternator Charge Current [A]: 70
Alternator Type: incl. vacuum pump
Belt Pulley [mm]: 67
Clamp: M6 B+, M5 D+ M5 W
Number of Ribs: 4
Pulleys: with multi-belt pulley
Voltage [V]: 14

AL-189JM

Alternator



ALFA ROMEO GIULIETTA (940)
FIAT 500L
FIAT 500X
FIAT TIPO (356)
FIAT TIPO 2 volumi /Coda spiovente (356_)
FIAT TIPO Station wagon (356_)

OE

52067418
52083172
55280473
68348758AB
71798219
K68348758AB

Alternator Charge Current [A]: 180
Belt Pulley [mm]: 54
Clamp: M8 B+ [LIN]
Number of Ribs: 6
Pulleys: with free-wheel belt pulley
Voltage [V]: 14

AL-190JM

Alternator



DACIA DUSTER
DACIA LOGAN (LS_)
DACIA LOGAN MCV (KS_)
DACIA LOGAN Pick-up (US_)
DACIA SANDERO
NISSAN MICRA III (K12)

OE

2310000Q0G
2310000Q2C
2310000Q2R
711368692
7701478093
7711368356

Alternator Charge Current [A]: 110
Belt Pulley [mm]: 55
Clamp: M8 B+ [L-DFM]
Number of Ribs: 6
Pulleys: with free-wheel belt pulley
Voltage [V]: 14

Electrics

AL-191JM

Alternator



CHEVROLET CAPTIVA (C100, C140)
 CHEVROLET EPICA (KL1_)
 CHEVROLET LACETTI (J200)
 CHEVROLET LACETTI Station wagon (J200)
 CHEVROLET NUBIRA Station wagon
 CHEVROLET NUBIRA Tre volumi

OE
 1202430
 1202485
 4805450
 4811550
 4817806
 95519920

Alternator Charge Current [A]: 120
 Belt Pulley [mm]: 56
 Clamp: M8 B+, F-L
 Number of Ribs: 6
 Pulleys: with free-wheel belt pulley
 Voltage [V]: 14

AL-192JM

Alternator



TOYOTA YARIS (SCP9_, NSP9_, KSP9_, NCP9_, ZSP9_)

OE
 270600N011

Alternator Charge Current [A]: 90
 Belt Pulley [mm]: 62
 Clamp: M6 B+ [S-DFM-IG-L]
 Number of Ribs: 6
 Pulleys: with free-wheel belt pulley
 Voltage [V]: 14

AL-193JM

Alternator



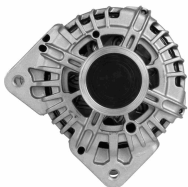
TOYOTA YARIS (SCP9_, NSP9_, KSP9_, NCP9_, ZSP9_)

OE
 270600Q030
 270600Q040
 2706040010
 2706040020

Alternator Charge Current [A]: 90
 Belt Pulley [mm]: 57
 Clamp: M6 B+ [S-DFM-IG-L]
 Number of Ribs: 6
 Pulleys: with multi-belt pulley
 Voltage [V]: 14

AL-194JM

Alternator



NISSAN ALMERA II (N16)
 NISSAN ALMERA II Hatchback (N16)
 NISSAN MICRA III (K12)
 RENAULT CLIO II (BB0/1/2_, CB0/1/2_)
 RENAULT GRAND SCÉNIC II (JM0/1_)
 RENAULT KANGOO (KC0/1_)

OE
 2310000QAB
 2310000QBB
 2310000QBJ
 2310000QBK
 231006313R
 23100BN701

Alternator Charge Current [A]: 150
 Belt Pulley [mm]: 54
 Clamp: M8 B+ [L-DFM]
 Number of Ribs: 5
 Pulleys: with free-wheel belt pulley
 Voltage [V]: 14

AL-195JM

Alternator



TOYOTA YARIS (NHP13_, NSP13_, NCP13_, KSP13_, NLP13_)

OE
 270600Q140
 2706040090

Alternator Charge Current [A]: 90
 Belt Pulley [mm]: 60
 Clamp: M6 B+ [LIN]
 Number of Ribs: 6
 Pulleys: with multi-belt pulley
 Voltage [V]: 14

AL-196JM

Alternator



TOYOTA BELTA
 TOYOTA VIOS/YARIS Tre volumi (ZSP9_, NCP9_)
 TOYOTA YARIS (SCP9_, NSP9_, KSP9_, NCP9_, ZSP9_)

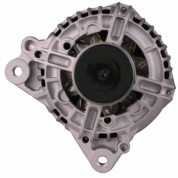
OE
 270600J051
 270600J061
 270600J070

Alternator Charge Current [A]: 90
 Belt Pulley [mm]: 55
 Clamp: M6 B+ [S-DFM-IG-L]
 Number of Ribs: 6
 Pulleys: with multi-belt pulley
 Voltage [V]: 14

Electrics

AL-197JM

Alternator



AUDI A4 (8D2, B5)
AUDI A4 (8E2, B6)
AUDI A4 Avant (8D5, B5)
AUDI A4 Avant (8E5, B6)
AUDI A6 (4B2, C5)
AUDI A6 Avant (4B5, C5)

OE
028903018K
028903029B
028903029BX
028903029C
028903029E
028903029EX

Alternator Charge Current [A]: 140
Belt Pulley [mm]: 56
Clamp: M8 B+ [L-DFM]
Number of Ribs: 5
Pulleys: with free-wheel belt pulley
Voltage [V]: 12

AL-198JM

Alternator



OPEL ASTRA G 2 volumi /Coda spiovente (F48_, F08_)
OPEL ASTRA G Cabriolet (F67)
OPEL ASTRA G Coupe (F07_)
OPEL ASTRA G Station wagon (F35_)
OPEL ASTRA G Tre volumi (F69_)

OE
074903025J
09133601
10457917
1204134
1204160
13108596

Alternator Charge Current [A]: 140
Belt Pulley [mm]: 50
Clamp: M8 B+ M5 D+
Number of Ribs: 6
Pulleys: with multi-belt pulley
Voltage [V]: 14

AL-199JM

Alternator



TOYOTA AURIS (NRE15_, ZZE15_, ADE15_, ZRE15_, NDE15_)
TOYOTA COROLLA Tre volumi (E15_)
TOYOTA URBAN CRUISER (NSP1_, NLP1_, ZSP1_, NCP11_)
TOYOTA YARIS (SCP9_, NSP9_, KSP9_, NCP9_)

OE
270600N040
270600N050
2706033100

Alternator Charge Current [A]: 100
Belt Pulley [mm]: 58
Clamp: M6 B+ [RLO-DFM-IG-L]
Number of Ribs: 6
Pulleys: with free-wheel belt pulley
Voltage [V]: 14

AL-200JM

Alternator



OPEL ASTRA H (L48)
OPEL ASTRA H GTC (L08)
OPEL ASTRA H Station wagon (L35)
OPEL ASTRA H TwinTop (L67)
OPEL SIGNUM
OPEL VECTRA C

OE
1202115
1202116
1204422
1204427
13229990
13229991

Alternator Charge Current [A]: 140
Belt Pulley [mm]: 54
Clamp: M8 B+ [DFM-L]
Number of Ribs: 6
Pulleys: with free-wheel belt pulley
Voltage [V]: 14

AL-201JM

Alternator



FORD B-MAX (JK)
FORD C-MAX II
FORD ECOSPORT
FORD FIESTA Tre volumi
FORD FIESTA VI
FORD FOCUS III

OE
1469714
1685794
1698214
1871861
1928875
2119650

Alternator Charge Current [A]: 120
Belt Pulley [mm]: 49
Clamp: M8 B+ [LIN]
Number of Ribs: 6
Pulleys: with multi-belt pulley
Voltage [V]: 14

AL-202JM

Alternator



CITROEN BERLINGO (MF)
CITROEN C5 I (DC_)
CITROEN C5 I Break (DE_)
CITROEN C8 (EA_, EB_)
CITROEN EVASION (22, U6)
CITROEN XANTIA (X2)

OE
06C903016B
06C903016BX
078903016S
1516481R
570520
57052D

Alternator Charge Current [A]: 150
Belt Pulley [mm]: 54
Clamp: M8 B+ M5 D+
Number of Ribs: 6
Pulleys: with multi-belt pulley
Voltage [V]: 14

Electrics

AL-203JM

Alternator



FORD FIESTA V (JH_, JD_)
FORD FUSION (JU_)
MAZDA 2 (DY)

OE
1140136
1485762
1519795
1760757
2S6T10300BA
2S6T10300BB

Alternator Charge Current [A]: 150
Belt Pulley [mm]: 54
Clamp: M8 B+ [FR-SIG-A]
Number of Ribs: 6
Pulleys: with free-wheel belt pulley
Voltage [V]: 14

AL-204JM

Alternator



FORD C-MAX (DM2)
FORD FIESTA V (JH_, JD_)
FORD FOCUS (DAW, DBW)
FORD FOCUS C-MAX
FORD FOCUS II (DA_)
FORD FOCUS II Cabriolet

OE
1064383
1070806
1073090
1090084
1090085
1097305

Alternator Charge Current [A]: 105
Belt Pulley [mm]: 48
Clamp: M8 B+ [FR-SIG-A]
Number of Ribs: 6
Pulleys: with multi-belt pulley
Voltage [V]: 14

AL-205JM

Alternator



CITROEN BERLINGO (MF)
CITROEN EVASION (22, U6)
CITROEN XANTIA (X1)
CITROEN XANTIA Break (X1)
CITROEN XM (Y4)
CITROEN XM Break (Y4)

OE
1516404R
1516411R
1516417R
3140065G00
3140065G00000
3292554

Alternator Charge Current [A]: 120
Belt Pulley [mm]: 61
Clamp: M8
Number of Ribs: 6
Pulleys: with multi-belt pulley
Voltage [V]: 12

AL-206JM

Alternator



CITROEN BERLINGO (B9)
CITROEN C3 II
CITROEN C3 Picasso
CITROEN C4 Coupé (LA_)
CITROEN C4 Grand Picasso I (UA_)
CITROEN C4 Grand Picasso II

OE
12317535098
12317553009
12317562388
12317574365
12317575650
12317575779

Alternator Charge Current [A]: 150
Belt Pulley [mm]: 49
Clamp: M6 B+ [BSS]
Number of Ribs: 6
Pulleys: with free-wheel belt pulley
Voltage [V]: 14

AL-207JM

Alternator



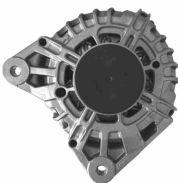
OPEL ASTRA G 2 volumi /Coda spiovente (F48_, F08_)
OPEL ASTRA G Cabriolet (F67)
OPEL ASTRA G CLASSIC (T98)
OPEL ASTRA G CLASSIC Caravan (F35)
OPEL ASTRA G CLASSIC Tre volumi (T98)

OE
1204108
1204121
13125229
13147093
13156050
13156054

Alternator Charge Current [A]: 120
Belt Pulley [mm]: 54
Clamp: M8
Number of Ribs: 5
Pulleys: with multi-belt pulley
Voltage [V]: 12

AL-208JM

Alternator



DACIA DOKKER
DACIA DUSTER
DACIA LODGY
DACIA LOGAN II
DACIA LOGAN MCV II
DACIA SANDERO II

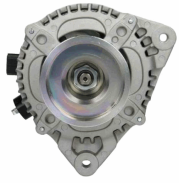
OE
2310007865A
2310007865R
231001318R
231003424R
231007865R
231007865RA

Alternator Charge Current [A]: 120
Belt Pulley [mm]: 55
Clamp: M8 B+ [LIN]
Number of Ribs: 6
Pulleys: with free-wheel belt pulley
Voltage [V]: 14

Electrics

AL-209JM

Alternator



FORD C-MAX (DM2)
 FORD FOCUS C-MAX
 FORD FOCUS II (DA_)
 FORD FOCUS II Station wagon (DA_)
 FORD FOCUS II Tre volumi (DA_)

OE

1302007
 132974
 1352425
 1352431
 1477740
 1677167

Alternator Charge Current [A]: 150
 Belt Pulley [mm]: 78
 Clamp: M8 B+ [FR-SIG-A]
 Pulleys: Without multi-belt pulley
 Voltage [V]: 14

AL-210JM

Alternator



CITROEN BERLINGO (B9)
 CITROEN C-CROSSER (EP_)
 CITROEN C4 Coupé (LA_)
 CITROEN C4 Grand Picasso I (UA_)
 CITROEN C4 I (LC_)
 CITROEN C4 Picasso I (UD_)

OE

1800A138
 56547528ON80
 570200
 5702000
 5702E2
 5702E3

Alternator Charge Current [A]: 180
 Belt Pulley [mm]: 54
 Clamp: M8 B+ [L-DFM]
 Number of Ribs: 6
 Pulleys: with free-wheel belt pulley
 Voltage [V]: 14

AL-211JM

Alternator



FIAT BRAVA (182)
 FIAT BRAVO I (182)
 FIAT PALIO (178BX)
 FIAT PALIO Weekend (178DX)
 FIAT PUNTO (176)
 FIAT SIENA (178_)

OE

46000357
 46231699
 46407645
 46420961
 46420964
 46420965

Alternator Charge Current [A]: 85
 Belt Pulley [mm]: 60
 Clamp: M8
 Number of Ribs: 6
 Pulleys: with multi-belt pulley
 Voltage [V]: 12

AL-212JM

Alternator



MERCEDES-BENZ CLASSE C (W204)
 MERCEDES-BENZ CLASSE C Coupé (C204)
 MERCEDES-BENZ CLASSE C T-Model (S204)
 MERCEDES-BENZ CLASSE E (W212)
 MERCEDES-BENZ CLASSE E Cabriolet (A207)
 MERCEDES-BENZ CLASSE E Coupé (C207)

OE

0009063622
 0009068802
 000906880280
 0131546802
 01315468020
 01315468020080

Alternator Charge Current [A]: 180
 Belt Pulley [mm]: 50
 Clamp: M8 B+ [LIN]
 Number of Ribs: 6
 Pulleys: with free-wheel belt pulley
 Voltage [V]: 14

AL-213JM

Alternator



OPEL ASTRA GTC J
 OPEL ASTRA J
 OPEL ASTRA J Sports Tourer
 OPEL INSIGNIA
 OPEL INSIGNIA A Country Tourer (G09)
 OPEL INSIGNIA Station wagon

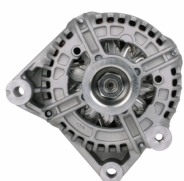
OE

1202236
 1202423
 1204643
 95519835

Alternator Charge Current [A]: 100
 Belt Pulley [mm]: 54
 Clamp: M8 B+ [F-L]
 Number of Ribs: 6
 Pulleys: with free-wheel belt pulley
 Voltage [V]: 14

AL-214JM

Alternator



BMW 3 (E90)
 BMW 3 Cabriolet (E93)
 BMW 3 Coupé (E92)
 BMW 3 Touring (E91)
 BMW 5 (E60)
 BMW 5 Touring (E61)

OE

12317788821
 12317789981
 12317789984
 12317792072
 12317797521
 12317797522

Alternator Charge Current [A]: 170
 Belt Pulley [mm]: 53
 Clamp: M6 B+ [COM-BSS]
 Number of Ribs: 6
 Pulleys: with multi-belt pulley
 Voltage [V]: 14

Electrics

AL-215JM

Alternator



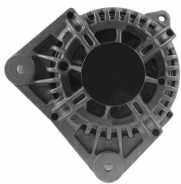
CHEVROLET MATIZ (M200, M250)
DAEWOO MATIZ

OE
AB165104

Alternator Charge Current [A]: 65
Belt Pulley [mm]: 64
Clamp: M6 B [1G-L]
Number of Ribs: 3
Pulleys: with multi-belt pulley
Voltage [V]: 14

AL-216JM

Alternator



PEUGEOT 308 (4A_, 4C_)
RENAULT GRAND SCÉNIC II (JM0/1_)
RENAULT KANGOO (KC0/1_)
RENAULT KANGOO / GRAND KANGOO (KW0/1_)
RENAULT KANGOO BE BOP (KW0/1_)
RENAULT MEGANE II (BM0/1_, CM0/1_)

OE
231008578R
7701475896
7701476812
7711368380
7711368719
8200390675

Alternator Charge Current [A]: 100
Belt Pulley [mm]: 55
Clamp: M6 B+ [BSS]
Number of Ribs: 6
Pulleys: with free-wheel belt pulley
Voltage [V]: 14

AL-217JM

Alternator



AUDI A6 (4F2, C6)
AUDI A6 Allroad (4FH, C6)
AUDI A6 Avant (4F5, C6)
AUDI A8 (4E_)
AUDI Q7 (4L)
VW TOUAREG (7LA, 7L6, 7L7)

OE
059903015R
059903015RX
059903017K
059903017KX
06C903016H
06C903016HX

Alternator Charge Current [A]: 180
Belt Pulley [mm]: 57
Clamp: M6 B+ [COM-BSS]
Number of Ribs: 6
Pulleys: with multi-belt pulley
Voltage [V]: 14

AL-218JM

Alternator



SMART CABRIO (450)
SMART CITY-COUPE (450)
SMART FORTWO Cabrio (450)
SMART FORTWO Coupé (450)

OE
0004717V005
0004717V005000000
0004717V006
0111548002
011154800280
4717V00500

Alternator Charge Current [A]: 85
Belt Pulley [mm]: 53
Clamp: M8 B+ [L-DFM]
Number of Ribs: 5
Pulleys: with multi-belt pulley
Voltage [V]: 14

AL-219JM

Alternator



AUDI A1 (8X1, 8XF)
AUDI A1 Sportback (8XA, 8XK)
AUDI A3 (8P1)
AUDI A3 Cabriolet (8P7)
AUDI A3 Sportback (8PA)
AUDI Q3 (8U)

OE
03L903023
03L903023A
03L903023AX
03L903023X
03L903024
03L903024M

Alternator Charge Current [A]: 140
Belt Pulley [mm]: 56
Clamp: M8 B+ [LIN]
Number of Ribs: 6
Pulleys: with free-wheel belt pulley
Voltage [V]: 14

AL-220JM

Alternator



SUZUKI JIMNY (FJ)

OE
3140084A10
3140084A10000
3140084A11
3140084A11000
3140084A12
3140084A12000

Alternator Charge Current [A]: 100
Alternator Type: incl. vacuum pump
Belt Pulley [mm]: 54
Clamp: M8 B+ [L-R]
Number of Ribs: 6
Pulleys: with free-wheel belt pulley
Voltage [V]: 14

Electrics

AL-221JM

Alternator



HYUNDAI ACCENT III (MC)
HYUNDAI ACCENT III Tre volumi (MC)
HYUNDAI ACCENT IV Tre volumi (RB)
HYUNDAI GETZ (TB)
HYUNDAI i10 (PA)
HYUNDAI i20

OE

373002A000
373002A010
373002A011
373002A050
373002A100
373002A110

Alternator Charge Current [A]: 120
Belt Pulley [mm]: 57
Clamp: M8 B+ [L]
Number of Ribs: 5
Pulleys: with free-wheel belt pulley
Voltage [V]: 14

AL-222JM

Alternator



LIGIER JS RC
MICROCAR DUè
MICROCAR F8
MICROCAR M.GO
MICROCAR MC
MICROCAR MC1 / MC CITY

OE

0011573260-S
1157326
1157397
1758064010
721001001
JFZ155A

Alternator Charge Current [A]: 40
Belt Pulley [mm]: 63
Clamp: M6 [IG-L]
Number of Ribs: 1
Pulleys: Without multi-belt pulley
Voltage [V]: 12

AL-223JM

Alternator



OPEL ASTRA CLASSIC (L48)
OPEL ASTRA CLASSIC Station wagon
OPEL ASTRA CLASSIC Tre volumi
OPEL ASTRA H (L48)
OPEL ASTRA H GTC (L08)
OPEL ASTRA H Station wagon (L35)

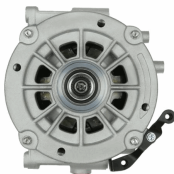
OE

1202424
1204197
1204424
1204425
1207197
6204274

Alternator Charge Current [A]: 140
Belt Pulley [mm]: 60
Clamp: M8 B+ [F-L]
Number of Ribs: 6
Pulleys: with free-wheel belt pulley
Voltage [V]: 14

AL-224JM

Alternator



MERCEDES-BENZ CLASSE C (W203)
MERCEDES-BENZ CLASSE C Coupe (CL203)
MERCEDES-BENZ CLASSE C T-Model (S203)
MERCEDES-BENZ CLASSE E (W210)
MERCEDES-BENZ CLASSE E Station wagon (S210)

OE

00011501750
00011502550
0001501750
0001502450
0001502550
A00011502550

Alternator Charge Current [A]: 190
Belt Pulley [mm]: 50
Clamp: M8 B+ [L-DFM]
Number of Ribs: 6
Pulleys: with free-wheel belt pulley
Voltage [V]: 12

AL-225JM

Alternator



FORD FOCUS (DAW, DBW)
FORD FOCUS Station wagon (DNW)
FORD FOCUS Tre volumi (DFW)
FORD TOURNEO CONNECT

OE

1229421
1376671
1376672
1376695
1429688
1429689

Alternator Charge Current [A]: 120
Belt Pulley [mm]: 78,5
Clamp: M6 + [S-SIG-FR]
Pulleys: Without multi-belt pulley
Voltage [V]: 14

AL-226JM

Alternator



MERCEDES-BENZ CLASSE A (W168)
MERCEDES-BENZ Vaneo (414)

OE

0101543802
010154380280
0111543502
011154350280
0111545602
011154560280

Alternator Charge Current [A]: 90
Belt Pulley [mm]: 51
Clamp: M8 B+M5 D+
Number of Ribs: 5
Pulleys: with multi-belt pulley
Voltage [V]: 14

