



**Quality Tested**<sup>®</sup>  
Automotive Spare Parts

# NEWS JULY 2025



[www.qualitytested.com](http://www.qualitytested.com)

**CATALOGUE**  
FOR CARS AND  
COMMERCIAL VEHICLES

**CATALOGO**  
PER AUTOVETTURE E  
VEICOLI COMMERCIALI

## Brake system

### BPW-311

#### Warning Contact, brake pad wear



IRISBUS DAILY TOURYS  
IVECO DAILY Cassone / Furgonato / Promiscuo  
IVECO DAILY III Pianale piatto/Telaio  
IVECO DAILY IV Cassone / Furgonato / Promiscuo  
IVECO DAILY IV Pianale piatto/Telaio

**OE**  
42556205

Brake Type: Disc Brake  
Fitting Position: Rear Axle  
For OE number: 42556205  
Warning Contact Length [mm]: 295

### BPW-312

#### Warning Contact, brake pad wear



AUDI A3 (8V1)  
AUDI A3 Cabriolet (8V7)  
AUDI A3 Limousine (8VS)  
AUDI A3 Sportback (8VA)  
AUDI Q2  
AUDI Q3 (F3B)

**OE**  
8V0615437

Article number of recommended accessories:  
50-00-0162  
Article number of recommended accessories:  
500162  
Article number of recommended accessories:  
PA-0162AF  
Brake Type: Disc Brake  
Fitting Position: Front Axle  
For OE number: 8V0615437  
Warning Contact Length [mm]: 170

### BPW-313

#### Warning Contact, brake pad wear



AUDI A4 (8W2, B9)  
AUDI A4 Allroad (8WH, B9)  
AUDI A4 Avant (8W5, B9)  
AUDI A5  
AUDI A5 Cabriolet  
AUDI A5 Sportback (F5A)

**OE**  
8W0615121E

Brake Type: Disc Brake  
Fitting Position: Rear Axle  
For OE number: 8W0615121E  
Warning Contact Length [mm]: 390

### BPW-314

#### Warning Contact, brake pad wear



AUDI A6 (C8, 4A2)  
AUDI A6 Allroad (4AH, C8)  
AUDI A6 Avant (C8, 4A5)  
AUDI A7 Sportback (4KA)  
AUDI E-TRON (GEN\_)  
AUDI E-TRON Sportback (GEA)

**OE**  
80A615121

Brake Type: Disc Brake  
Fitting Position: Rear Axle  
For OE number: 80A615121  
Warning Contact Length [mm]: 345

## Electrics

### AL-101JM

#### Alternator



ALFA ROMEO MITO (955)  
CITROEN NEMO Station wagon  
FIAT 500 (312)  
FIAT 500 C (312)  
FIAT DOBLO (119)  
FIAT FIORINO MPV / Space wagon (225\_)

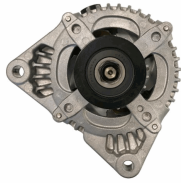
**OE**  
13117279  
13117279YQ  
13197577  
13243463  
13283344  
1539099

Alternator Charge Current [A]: 190  
Belt Pulley [mm]: 54  
Clamp: M8 B+M5 D+  
Number of Ribs: 6  
Pulleys: with free-wheel belt pulley  
Voltage [V]: 14

## Electrics

### AL-102JM

#### Alternator



FORD C-MAX (DM2)  
 FORD FIESTA V (JH\_, JD\_)  
 FORD FOCUS C-MAX  
 FORD FOCUS II (DA\_)  
 FORD FOCUS II Cabriolet  
 FORD FOCUS II Station wagon (DA\_)

#### OE

1229258  
 1229259  
 1255711  
 1255712  
 1477737  
 1477738

Alternator Charge Current [A]: 150  
 Belt Pulley [mm]: 54  
 Clamp: M8 B+ [FR-SIG-A]  
 Number of Ribs: 6  
 Pulleys: with free-wheel belt pulley  
 Voltage [V]: 14

### AL-103JM

#### Alternator



ALFA ROMEO 145 (930)  
 ALFA ROMEO 146 (930)  
 ALFA ROMEO 147 (937)  
 ALFA ROMEO 156 (932)  
 ALFA ROMEO 156 Sportwagon (932)  
 ALFA ROMEO GT (937)

#### OE

46554408  
 46763533  
 46763534  
 46765838  
 46774430  
 46782212

Alternator Charge Current [A]: 100  
 Belt Pulley [mm]: 62  
 Clamp: M8 B+ M5 D+  
 Number of Ribs: 6  
 Pulleys: with multi-belt pulley  
 Voltage [V]: 14

### AL-104JM

#### Alternator



ALFA ROMEO 147 (937)  
 ALFA ROMEO 156 (932)  
 ALFA ROMEO 156 Sportwagon (932)  
 ALFA ROMEO 166 (936)  
 FIAT BRAVA (182)  
 FIAT BRAVO I (182)

#### OE

46543023  
 46544329  
 46748353  
 46809068  
 60815944  
 60815953

Alternator Charge Current [A]: 120  
 Belt Pulley [mm]: 62  
 Clamp: M8 B+ M5 D+  
 Number of Ribs: 6  
 Pulleys: with free-wheel belt pulley  
 Voltage [V]: 14

### AL-105JM

#### Alternator



ALFA ROMEO MITO (955)  
 FIAT 500 (312)  
 FIAT 500 C (312)  
 FIAT 500L  
 FIAT BRAVO II (198)  
 FIAT DOBLO (119)

#### OE

1202290  
 1202445  
 1535437  
 1673521  
 1705484  
 2706074220

Alternator Charge Current [A]: 105  
 Belt Pulley [mm]: 54  
 Clamp: M8 B+, M5 D+  
 Number of Ribs: 5  
 Pulleys: with multi-belt pulley  
 Voltage [V]: 14

### AL-106JM

#### Alternator



ALFA ROMEO 159 (939)  
 ALFA ROMEO 159 Sportwagon (939)  
 ALFA ROMEO BRERA  
 ALFA ROMEO GIULIETTA (940)  
 ALFA ROMEO MITO (955)  
 ALFA ROMEO SPIDER (939)

#### OE

0000051884886  
 0051884886  
 1202272  
 1202274  
 1204456  
 1204457

Alternator Charge Current [A]: 120  
 Belt Pulley [mm]: 54  
 Clamp: M8 B+ M5 D+  
 Number of Ribs: 6  
 Pulleys: with free-wheel belt pulley  
 Voltage [V]: 14

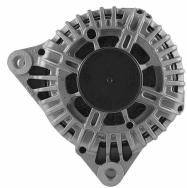
**Electrics**
**AL-107JM**
**Alternator**


AUDI A1 (8X1, 8XF)  
 AUDI A1 Sportback (8XA, 8XK)  
 AUDI A2 (8Z0)  
 AUDI A3 (8L1)  
 AUDI A3 (8P1)  
 AUDI A3 Cabriolet (8P7)

**OE**

021903025K  
 021903025T  
 028903026H  
 028903028E  
 028903029G  
 028903029GX

Alternator Charge Current [A]: 140  
 Belt Pulley [mm]: 56  
 Clamp: M8 B+ [L-DFM]  
 Number of Ribs: 6  
 Pulleys: with free-wheel belt pulley  
 Voltage [V]: 14

**AL-108JM**
**Alternator**


CITROEN C3 I (FC\_)  
 CITROEN C4 Picasso I (UD\_)  
 CITROEN C5 I (DC\_)  
 CITROEN C8 (EA\_, EB\_)  
 LANCIA PHEDRA (179)  
 PEUGEOT 206 2 volumi /Coda spiovente (2A/C)

**OE**

12317794970  
 1638095180  
 3140069K00  
 3140069K00000  
 5702  
 5702AR

Alternator Charge Current [A]: 150  
 Belt Pulley [mm]: 54  
 Clamp: M8 B+ [L-DFM]  
 Number of Ribs: 6  
 Pulleys: with free-wheel belt pulley  
 Voltage [V]: 12

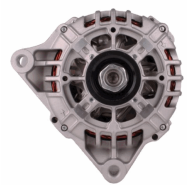
**AL-109JM**
**Alternator**


FORD B-MAX (JK)  
 FORD C-MAX II  
 FORD ECOSPORT  
 FORD FIESTA VI  
 FORD FOCUS III  
 FORD FOCUS III Tre volumi

**OE**

1376501  
 1387927  
 1506299  
 1506300  
 1685793  
 1704769

Alternator Charge Current [A]: 150  
 Belt Pulley [mm]: 54  
 Clamp: M8 B+ [LIN]  
 Number of Ribs: 6  
 Pulleys: with free-wheel belt pulley  
 Voltage [V]: 14

**AL-110JM**
**Alternator**


CITROEN BERLINGO (B9)  
 CITROEN BERLINGO (MF)  
 CITROEN C-ELYSEE  
 CITROEN C2 (JM\_)  
 CITROEN C3 I (FC\_)  
 CITROEN C3 II

**OE**

27060YV010  
 5702000000  
 570200000000  
 5702A2  
 5702A3  
 5702A4

Alternator Charge Current [A]: 90  
 Belt Pulley [mm]: 49  
 Clamp: M8 B+ [L-DFM]  
 Number of Ribs: 6  
 Pulleys: with multi-belt pulley  
 Voltage [V]: 12

**AL-111JM**
**Alternator**


OPEL ASTRA H (L48)  
 OPEL ASTRA H GTC (L08)  
 OPEL ASTRA H Station wagon (L35)  
 OPEL ASTRA H Tre volumi (L69)  
 VAUXHALL ASTRA Mk V (H) 2 volumi /Coda spiovente

**OE**

1204619  
 2506102  
 2506103  
 6204183  
 6204199  
 6204200

Alternator Charge Current [A]: 100  
 Alternator Type: incl. vacuum pump  
 Belt Pulley [mm]: 60  
 Clamp: M8 B+ [F-L]  
 Number of Ribs: 6  
 Pulleys: with free-wheel belt pulley  
 Voltage [V]: 14

## Electrics

### AL-112JM

#### Alternator



ALFA ROMEO 159 (939)  
ALFA ROMEO 159 Sportwagon (939)  
FIAT GRANDE PUNTO (199)  
FIAT SEDICI  
FIAT STILO (192)  
FIAT STILO Multi Wagon (192)

#### OE

1204434  
1204436  
12759595  
13117236  
13117341  
13117341AA

Alternator Charge Current [A]: 130  
Belt Pulley [mm]: 62  
Clamp: M8 B+ M6 DFM, M5 D+  
Number of Ribs: 6  
Pulleys: with free-wheel belt pulley  
Voltage [V]: 14

### AL-113JM

#### Alternator



ALFA ROMEO MITO (955)  
CITROEN NEMO Station wagon  
FIAT 500 (312)  
FIAT 500 C (312)  
FIAT DOBLO (119)  
FIAT FIORINO MPV / Space wagon (225\_)

#### OE

1204429  
13153237  
13197578  
13256928  
13256929  
1606439580

Alternator Charge Current [A]: 120  
Belt Pulley [mm]: 54  
Clamp: M8 B+ M5 D+  
Number of Ribs: 6  
Pulleys: with free-wheel belt pulley  
Voltage [V]: 14

### AL-114JM

#### Alternator



OPEL AGILA (A) (H00)  
OPEL AGILA (B) (H08)  
OPEL ASTRA H (L48)  
OPEL ASTRA H GTC (L08)  
OPEL ASTRA H Station wagon (L35)  
OPEL ASTRA H Tre volumi (L69)

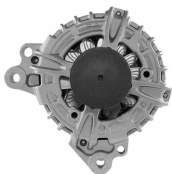
#### OE

13222935  
13222936  
13256931  
13256932  
6204258  
6204259

Alternator Charge Current [A]: 120  
Belt Pulley [mm]: 54  
Clamp: M8 B+ [DFM-L]  
Number of Ribs: 6  
Pulleys: with free-wheel belt pulley  
Voltage [V]: 12

### AL-115JM

#### Alternator



AUDI A1 (8X1, 8XF)  
AUDI A1 Sportback (8XA, 8XK)  
AUDI A3 (8V1)  
AUDI A3 Cabriolet (8V7)  
AUDI A3 Limousine (8VS)  
AUDI A3 Sportback (8VA)

#### OE

03G903016B  
03G903016BX  
03G903016E  
03G903016EX  
03G903016G  
03G903016GX

Alternator Charge Current [A]: 140  
Belt Pulley [mm]: 49  
Clamp: M8 B+ [LIN]  
Number of Ribs: 6  
Pulleys: with free-wheel belt pulley  
Voltage [V]: 14

### AL-116JM

#### Alternator



MITSUBISHI L 200 (K7\_T, K6\_T)  
MITSUBISHI PAJERO II (V3\_W, V2\_W, V4\_W)  
MITSUBISHI PAJERO II Canvas Top (V2\_W, V4\_W)  
MITSUBISHI PAJERO SPORT (K90)

#### OE

1800A005  
1800A243  
A002T1199AT  
A002T81499  
A002T82899  
A002T82899A

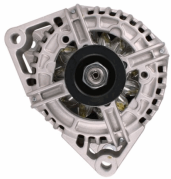
Alternator Charge Current [A]: 90  
Alternator Type: incl. vacuum pump  
Belt Pulley [mm]: 76  
Clamp: M8 [L-S]  
Number of Ribs: 2  
Pulleys: Without multi-belt pulley  
Voltage [V]: 12

**Electrics**
**AL-117JM**
**Alternator**


ALFA ROMEO MITO (955)  
 CHRYSLER YPSILON  
 FIAT 500 (312)  
 FIAT 500 C (312)  
 FIAT 500L  
 FIAT 500X

**OE**  
 1608858180  
 51880172  
 51880173  
 51880175  
 51984058  
 51993603

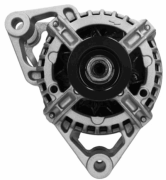
Alternator Charge Current [A]: 120  
 Belt Pulley [mm]: 54  
 Clamp: M8 B+ [LIN]  
 Number of Ribs: 6  
 Pulleys: with free-wheel belt pulley  
 Voltage [V]: 12

**AL-118JM**
**Alternator**


OPEL ASTRA CLASSIC (L48)  
 OPEL ASTRA CLASSIC Station wagon  
 OPEL ASTRA G 2 volumi /Coda spiovente (F48\_,  
 F08\_)  
 OPEL ASTRA G Station wagon (F35\_)  
 OPEL ASTRA G Tre volumi (F69\_)

**OE**  
 09117935  
 10480226  
 1204155  
 13143128  
 13156053  
 2437121

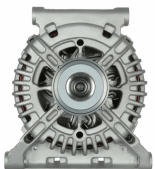
Alternator Charge Current [A]: 120  
 Belt Pulley [mm]: 54  
 Clamp: M8 B+  
 Number of Ribs: 5  
 Pulleys: with multi-belt pulley  
 Voltage [V]: 12

**AL-119JM**
**Alternator**


OPEL AGILA (A) (H00)  
 OPEL ASTRA H Station wagon (L35)  
 OPEL CORSA B (73\_, 78\_, 79\_)  
 OPEL CORSA D  
 VAUXHALL AGILA Mk I (A)  
 VAUXHALL CORSA Mk I (B)

**OE**  
 09117932  
 09133599  
 1204136  
 13156052  
 24437119  
 24463064YJ

Alternator Charge Current [A]: 70  
 Belt Pulley [mm]: 52  
 Clamp: M8 B+  
 Number of Ribs: 5  
 Pulleys: with multi-belt pulley  
 Voltage [V]: 12

**AL-120JM**
**Alternator**


MERCEDES-BENZ CLASSE A (W169)  
 MERCEDES-BENZ CLASSE B (W245)

**OE**  
 6401540102  
 6401540202  
 6401540302  
 6401540402  
 6401540502  
 640154050280

Alternator Charge Current [A]: 150  
 Belt Pulley [mm]: 50  
 Clamp: M8 B+ [LIN]  
 Number of Ribs: 5  
 Pulleys: with free-wheel belt pulley  
 Voltage [V]: 12

**AL-121JM**
**Alternator**


CITROEN BERLINGO (B9)  
 CITROEN BERLINGO (K9)  
 CITROEN C-ELYSEE  
 CITROEN C3 AIRCROSS II  
 CITROEN C3 II  
 CITROEN C3 III (SX)

**OE**  
 1606859180  
 1609957280  
 1611285580  
 1612458880  
 1623862880  
 1638094380

Alternator Charge Current [A]: 150  
 Belt Pulley [mm]: 54  
 Clamp: M8 B+ [LIN]  
 Number of Ribs: 6  
 Pulleys: with free-wheel belt pulley  
 Voltage [V]: 14

**Electrics**
**AL-122JM**
**Alternator**


AUDI A2 (8Z0)  
 AUDI A3 (8L1)  
 AUDI A3 (8P1)  
 AUDI A3 Cabriolet (8P7)  
 AUDI A3 Sportback (8PA)  
 AUDI TT (8N3)

**OE**

021903025H  
 021903025J  
 028903028C  
 028903028CX  
 028903028D  
 028903028DX

Alternator Charge Current [A]: 110  
 Belt Pulley [mm]: 56  
 Clamp: M8 B+ [L-DFM]  
 Number of Ribs: 6  
 Pulleys: with multi-belt pulley  
 Voltage [V]: 14

**AL-123JM**
**Alternator**


AUDI A2 (8Z0)  
 AUDI A3 (8L1)  
 AUDI TT (8N3)  
 AUDI TT Roadster (8N9)  
 FORD GALAXY (WGR)  
 SEAT ALHAMBRA (7V8, 7V9)

**OE**

038903018LX  
 038903018P  
 038903018PX  
 038903023  
 038903023K  
 038903023L

Alternator Charge Current [A]: 90  
 Belt Pulley [mm]: 56  
 Clamp: M8 B+ [L-DFM]  
 Number of Ribs: 6  
 Pulleys: with free-wheel belt pulley  
 Voltage [V]: 12

**AL-124JM**
**Alternator**


ALFA ROMEO AR 6 Furgonato (280)  
 ALFA ROMEO AR 8 Furgonato (280)  
 ALFA ROMEO AR 8 Pianale piatto/Telaio (280)  
 FIAT 127  
 FIAT 127 Panorama  
 FIAT 131

**OE**

116760506000  
 116760506100  
 1516538R  
 1516607R  
 2022607  
 2995030

Alternator Charge Current [A]: 55  
 Belt Pulley [mm]: 86  
 Clamp: M6,D+  
 Number of Ribs: 1  
 Pulleys: Without multi-belt pulley  
 Voltage [V]: 12

**AL-125JM**
**Alternator**


AUTOBIANCHI Y10  
 FIAT PANDA (141A\_)  
 FIAT TIPO (160)  
 FIAT UNO (146A/E)  
 LANCIA Y10 (156)

**OE**

000007565832  
 0000046231660  
 11572630  
 11572690  
 11572700  
 46231657

Alternator Charge Current [A]: 55  
 Belt Pulley [mm]: 65  
 Clamp: M6,D+  
 Number of Ribs: 1  
 Pulleys: Without multi-belt pulley  
 Voltage [V]: 12

**AL-126JM**
**Alternator**


FIAT 127  
 FIAT CINQUECENTO (170)  
 FIAT PANDA (141A\_)  
 FIAT SEICENTO (187)  
 FIAT UNO (146A/E)  
 LANCIA A 112

**OE**

0003934961  
 2702061013  
 2702061100  
 2702061130  
 4242498  
 4274759

Alternator Charge Current [A]: 55  
 Belt Pulley [mm]: 66  
 Clamp: M6,D+  
 Number of Ribs: 1  
 Pulleys: Without multi-belt pulley  
 Voltage [V]: 12

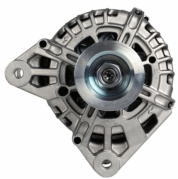
**Electrics**
**AL-127JM**
**Alternator**


ALFA ROMEO 33 (907A)  
 ALFA ROMEO 6 (119)  
 ALFA ROMEO 75 (162B)  
 FIAT CROMA (154)  
 LANCIA THEMA (834)  
 LANCIA THEMA SW (834)

**OE**

1204072  
 1204344  
 294394800  
 46231726  
 46231758  
 4765931

Alternator Charge Current [A]: 65  
 Belt Pulley [mm]: 93  
 Clamp: M6,D+  
 Number of Ribs: 2  
 Pulleys: Without multi-belt pulley  
 Voltage [V]: 12

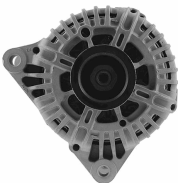
**AL-128JM**
**Alternator**


RENAULT CLIO Grandtour (KR0/1\_)  
 RENAULT CLIO Grandtour IV  
 RENAULT CLIO III (BR0/1, CR0/1)  
 RENAULT CLIO IV  
 RENAULT MODUS / GRAND MODUS (F/JP0\_)  
 RENAULT TWINGO II (CN0\_)

**OE**

231000646R  
 7711368178  
 7711368602  
 7711368683  
 7711497091  
 7711497092

Alternator Charge Current [A]: 120  
 Belt Pulley [mm]: 55  
 Clamp: M8 B+ [BSS]  
 Number of Ribs: 7  
 Pulleys: with multi-belt pulley  
 Voltage [V]: 14

**AL-129JM**
**Alternator**


CITROEN BERLINGO (MF)  
 CITROEN C1 (PM\_, PN\_)  
 CITROEN C2 (JM\_)  
 CITROEN C3 I (FC\_)  
 CITROEN C3 Pluriel (HB\_)  
 CITROEN C4 Coupé (LA\_)

**OE**

27060YU020  
 27060YV020  
 3140073J00  
 3140073J000000  
 5702A6  
 5702A7

Alternator Charge Current [A]: 150  
 Belt Pulley [mm]: 54  
 Clamp: M8 B+ [L-DFM]  
 Number of Ribs: 6  
 Pulleys: with multi-belt pulley  
 Voltage [V]: 14

**AL-130JM**
**Alternator**


ABARTH PUNTO EVO (199\_)  
 ALFA ROMEO GIULIETTA (940)  
 ALFA ROMEO MITO (955)  
 FIAT 500 (312)  
 FIAT 500 C (312)  
 FIAT 500L

**OE**

51788658  
 51854903  
 51927506  
 52003527  
 52003621  
 71796446

Alternator Charge Current [A]: 120  
 Belt Pulley [mm]: 54  
 Clamp: M8 B+ M5 D+  
 Number of Ribs: 5  
 Pulleys: with free-wheel belt pulley  
 Voltage [V]: 14

**AL-131JM**
**Alternator**


DACIA DOKKER  
 DACIA DUSTER  
 DACIA LODGY  
 DACIA LOGAN II  
 DACIA LOGAN MCV II  
 DACIA SANDERO II

**OE**

231000026R  
 7711368381  
 7711497409  
 8200390676  
 8200660034

Alternator Charge Current [A]: 160  
 Belt Pulley [mm]: 55  
 Clamp: M8 B+ [BSS]  
 Number of Ribs: 6  
 Pulleys: with free-wheel belt pulley  
 Voltage [V]: 14

**Electrics**
**AL-132JM**
**Alternator**

 CHRYSLER DELTA  
 FIAT FREEMONT (JF\_)

**OE**

 56029574AA  
 K56029574AA  
 K56029574AB  
 P56029574AA  
 TT13138

 Alternator Charge Current [A]: 130  
 Belt Pulley [mm]: 54  
 Clamp: M8 B+ [LIN]  
 Number of Ribs: 6  
 Pulleys: with free-wheel belt pulley  
 Voltage [V]: 14

**AL-133JM**
**Alternator**

 TOYOTA AURIS (NRE15\_, ZZE15\_, ADE15\_,  
 ZRE15\_, NDE15\_)  
 TOYOTA AVENSIS  
 TOYOTA AVENSIS (T25\_)  
 TOYOTA AVENSIS Station wagon (T25)  
 TOYOTA AVENSIS Station wagon (ZRT27,

**OE**

 270600G010  
 270600G011  
 270600G01184  
 270600R060  
 270600R070  
 270600R071

 Alternator Charge Current [A]: 100  
 Belt Pulley [mm]: 58  
 Clamp: [RLO-DFM-IG-L]  
 Number of Ribs: 7  
 Pulleys: with free-wheel belt pulley  
 Voltage [V]: 14

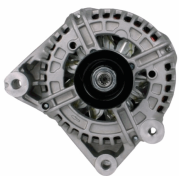
**AL-134JM**
**Alternator**

 LEXUS IS II (GSE2\_, ALE2\_, USE2\_)  
 TOYOTA AURIS (NRE15\_, ZZE15\_, ADE15\_,  
 ZRE15\_, NDE15\_)  
 TOYOTA AVENSIS  
 TOYOTA AVENSIS Station wagon (ZRT27,  
 ADT27)

**OE**

 0210802470  
 270600G021  
 270600R080  
 2706026030  
 270602603084  
 2706026060

 Alternator Charge Current [A]: 150  
 Belt Pulley [mm]: 58  
 Clamp: M6 B+ [RLO-DFM-IG-L]  
 Number of Ribs: 7  
 Pulleys: with free-wheel belt pulley  
 Voltage [V]: 14

**AL-135JM**
**Alternator**

 BMW 3 (E46)  
 BMW 3 Cabriolet (E46)  
 BMW 3 Compact (E46)  
 BMW 3 Coupe (E46)  
 BMW 3 Touring (E46)  
 BMW X3 (E83)

**OE**

 12317789980  
 12317789983  
 12317797660  
 12317797661  
 7789980  
 7789980A101

 Alternator Charge Current [A]: 150  
 Belt Pulley [mm]: 54  
 Clamp: M8 B+ [L-DFM]  
 Number of Ribs: 6  
 Pulleys: with multi-belt pulley  
 Voltage [V]: 12

**AL-136JM**
**Alternator**

 FORD FIESTA V (JH\_, JD\_)  
 FORD FUSION (JU\_)  
 MAZDA 2 (DY)

**OE**

 2S6TAC  
 2S6TAD  
 3S6TAD  
 Y40118300B

 Alternator Charge Current [A]: 80  
 Belt Pulley [mm]: 54  
 Clamp: M8 B+ [FR-SIG-A]  
 Number of Ribs: 6  
 Pulleys: with free-wheel belt pulley  
 Voltage [V]: 14

**Electrics**
**AL-137JM**
**Alternator**


BMW 1 (E87)  
 BMW 3 (E90)  
 BMW 3 Cabriolet (E93)  
 BMW 3 Coupé (E92)  
 BMW 3 Touring (E91)

**OE**

12317790548  
 12317795620  
 12317797519  
 12317797520  
 12317799180  
 12317799181

Alternator Charge Current [A]: 150  
 Belt Pulley [mm]: 54  
 Clamp: M8 B+ [COM]  
 Number of Ribs: 6  
 Pulleys: with multi-belt pulley  
 Voltage [V]: 14

**AL-138JM**
**Alternator**


FIAT DUCATO Autobus (244, Z\_)  
 FIAT DUCATO Autobus (250)  
 FIAT DUCATO Furgonato (244)  
 FIAT DUCATO Furgonato (250)  
 FIAT DUCATO Pianale piatto/Telaio (244)  
 FIAT DUCATO Pianale piatto/Telaio (250)

**OE**

1506770R  
 2995390  
 500059504  
 504009977  
 504009978  
 5801377162

Alternator Charge Current [A]: 140  
 Belt Pulley [mm]: 55  
 Clamp: M8 B+ [L-DFM]  
 Number of Ribs: 7  
 Pulleys: with multi-belt pulley  
 Voltage [V]: 14

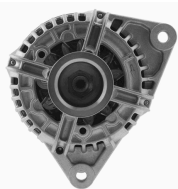
**AL-139JM**
**Alternator**


DACIA DOKKER  
 DACIA DUSTER  
 DACIA LODGY  
 DACIA LOGAN (LS\_)  
 DACIA LOGAN II  
 DACIA LOGAN MCV (KS\_)

**OE**

1121540202  
 1121542002  
 2310000Q0M  
 2310000Q2J  
 2310000Q2JEX  
 2310000QBH

Alternator Charge Current [A]: 150  
 Belt Pulley [mm]: 55  
 Clamp: M8 B+ [L-DFM]  
 Number of Ribs: 6  
 Pulleys: with free-wheel belt pulley  
 Voltage [V]: 14

**AL-140JM**
**Alternator**


IVECO DAILY III Autobus  
 IVECO DAILY III Cassone / Furgonato /  
 Promiscuo  
 IVECO DAILY III Pianale piatto/Telaio  
 RENAULT MASCOTT Pianale piatto/Telaio (UH\_  
 HH\_)

**OE**

1524013R  
 2995544  
 2995548  
 2995982  
 2995984  
 47129299

Alternator Charge Current [A]: 120  
 Belt Pulley [mm]: 68  
 Clamp: M8 B+ [L-DFM]  
 Number of Ribs: 6  
 Pulleys: with multi-belt pulley  
 Voltage [V]: 14

**AL-141JM**
**Alternator**


FORD FIESTA V (JH\_, JD\_)  
 FORD FUSION (JU\_)

**OE**

1140135  
 1303447  
 1464756  
 1464788  
 1477856  
 1477859

Alternator Charge Current [A]: 80  
 Belt Pulley [mm]: 54  
 Clamp: M8 B+ [FR-SIG-A]  
 Number of Ribs: 6  
 Pulleys: with multi-belt pulley  
 Voltage [V]: 14

**Electrics**
**AL-142JM**
**Alternator**


FORD FOCUS (DAW, DBW)  
 FORD FOCUS Station wagon (DNW)  
 FORD FOCUS Tre volumi (DFW)

**OE**

1079312  
 1097306  
 1126051  
 1138231  
 1144182  
 1144183

Alternator Charge Current [A]: 90  
 Belt Pulley [mm]: 78  
 Clamp: M8 B+ [FR-SIG-A]  
 Pulleys: Without multi-belt pulley  
 Voltage [V]: 14

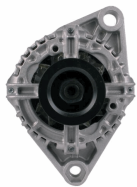
**AL-143JM**
**Alternator**


BMW 1 (E81)  
 BMW 1 (E87)  
 BMW 1 Cabriolet (E88)  
 BMW 1 Coupé (E82)  
 BMW 3 (E90)  
 BMW 3 Cabriolet (E93)

**OE**

12317802261  
 12317802619  
 7802261  
 7802619

Alternator Charge Current [A]: 180  
 Belt Pulley [mm]: 53  
 Clamp: M6 B+ [COM-BSS]  
 Number of Ribs: 6  
 Pulleys: with multi-belt pulley  
 Voltage [V]: 14

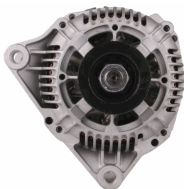
**AL-144JM**
**Alternator**


FIAT BRAVA (182)  
 FIAT BRAVO I (182)  
 FIAT DOBLO (119)  
 FIAT MAREA (185)  
 FIAT MAREA Weekend (185)  
 FIAT MULTIPLA (186)

**OE**

46420963  
 46532667  
 46532668  
 46532669  
 468130061  
 46813061

Alternator Charge Current [A]: 105  
 Belt Pulley [mm]: 60  
 Clamp: M8  
 Number of Ribs: 5  
 Pulleys: with multi-belt pulley  
 Voltage [V]: 12

**AL-145JM**
**Alternator**


CITROEN BERLINGO (MF)  
 CITROEN C5 I (DC\_)  
 CITROEN C5 I Break (DE\_)  
 CITROEN EVASION (22, U6)  
 CITROEN XANTIA (X2)  
 CITROEN XANTIA Break (X2)

**OE**

1516470R  
 1516478R  
 1516492R  
 57052A  
 57052B  
 57052C

Alternator Charge Current [A]: 90  
 Belt Pulley [mm]: 55  
 Clamp: M8 B+,M5 D+ W  
 Number of Ribs: 6  
 Pulleys: with multi-belt pulley  
 Voltage [V]: 14

**AL-146JM**
**Alternator**


AUTOBIANCHI Y10  
 FIAT 126  
 FIAT 127  
 FIAT 127 Panorama  
 FIAT 147  
 FIAT CINQUECENTO (170)

**OE**

076903023G  
 43231721  
 4395131  
 4419109  
 4434084  
 4470266

Alternator Charge Current [A]: 65  
 Belt Pulley [mm]: 58  
 Clamp: M6  
 Number of Ribs: 5  
 Pulleys: with multi-belt pulley  
 Voltage [V]: 12

## Electrics

### AL-147JM

#### Alternator



TOYOTA YARIS (SCP9\_, NSP9\_, KSP9\_, NCP9\_, ZSP9\_)

**OE**  
270600Q060  
2706040040  
2706040041

Alternator Charge Current [A]: 80  
Belt Pulley [mm]: 80  
Clamp: M6 B+ [RLO-DFM-IG-L]  
Number of Ribs: 6  
Pulleys: with multi-belt pulley  
Voltage [V]: 14

### AL-148JM

#### Alternator



MERCEDES-BENZ CLASSE C (W202)  
MERCEDES-BENZ CLASSE C Station wagon (S202)  
MERCEDES-BENZ CLASSE E (W210)  
MERCEDES-BENZ CLASSE E Station wagon (S210)

**OE**  
0101545902  
010154590280  
0101546302  
0101549502  
010154950280  
0101549602

Alternator Charge Current [A]: 120  
Belt Pulley [mm]: 50  
Clamp: M8 B+ M5 D+  
Number of Ribs: 6  
Pulleys: with free-wheel belt pulley  
Voltage [V]: 14

### AL-149JM

#### Alternator



CITROEN JUMPER Autobus (230P)  
CITROEN JUMPER Autobus (244, Z\_)  
CITROEN JUMPER Furgonato (230L)  
CITROEN JUMPER Furgonato (244)  
CITROEN JUMPER Pianale piatto/Telaio (230)  
CITROEN JUMPER Pianale piatto/Telaio (244)

**OE**  
12090113  
500345767  
500371244  
504033459  
5702A8  
5702A9

Alternator Charge Current [A]: 150  
Belt Pulley [mm]: 60  
Clamp: M5 D+  
Number of Ribs: 6  
Pulleys: with multi-belt pulley  
Voltage [V]: 12

### AL-150JM

#### Alternator



AUDI 80 Avant (8C, B4)  
AUDI 90 (89, 89Q, 8A, B3)  
BAOLONG LINGHUI  
BAOLONG LINGJUN  
BAOLONG LINGQI  
CHEVROLET CLASSIC

**OE**  
038520135A  
1516473R  
1516529R  
2997074  
38520135A  
4152610

Alternator Charge Current [A]: 35  
Belt Pulley [mm]: 95  
Clamp: M6  
Number of Ribs: 1  
Pulleys: Without multi-belt pulley  
Voltage [V]: 24

### AL-151JM

#### Alternator



LAND ROVER DEFENDER Cabrio (LD)  
LAND ROVER DEFENDER Station Wagon (LD)

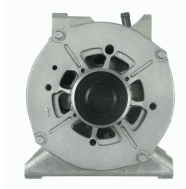
**OE**  
1372736  
1374171  
1404791  
1474021  
1572736  
1581842

Alternator Charge Current [A]: 150  
Belt Pulley [mm]: 59  
Clamp: M8 B+ [L-DFM]  
Number of Ribs: 6  
Pulleys: with free-wheel belt pulley  
Voltage [V]: 14

## Electrics

### AL-152JM

#### Alternator



MERCEDES-BENZ CLASSE A (W168)  
MERCEDES-BENZ Vaneo (414)

#### OE

6681540102  
668154010280  
6681540202  
668154020280  
6681540302  
668154030280

Alternator Charge Current [A]: 150  
Belt Pulley [mm]: 50  
Clamp: M8 B+ [L-DFM]  
Number of Ribs: 5  
Pulleys: with multi-belt pulley  
Voltage [V]: 12

### AL-153JM

#### Alternator



ABARTH PUNTO EVO (199)  
ALFA ROMEO MITO (955)  
FIAT 500 (312)  
FIAT 500 C (312)  
FIAT 500L  
FIAT BRAVO II (198)

#### OE

1202288  
1202463  
1535436  
1673520  
1705483  
1719535

Alternator Charge Current [A]: 105  
Belt Pulley [mm]: 54  
Clamp: M8 B+, M5 D+  
Number of Ribs: 4  
Pulleys: with multi-belt pulley  
Voltage [V]: 14

### AL-154JM

#### Alternator



NISSAN PATHFINDER  
NISSAN PRIMERA (P12)  
NISSAN PRIMERA Hatchback (P12)  
NISSAN PRIMERA Station wagon (WP12)  
NISSAN TERRANO I (WD21)  
RENAULT GRAND SCÉNIC II (JM0/1\_)

#### OE

2303011252  
2310000Q0F  
2310000Q0L  
2310000Q2F  
2310000QAN  
23100AW300

Alternator Charge Current [A]: 150  
Belt Pulley [mm]: 49  
Clamp: M8 B+ [L-DFM]  
Number of Ribs: 7  
Pulleys: with multi-belt pulley  
Voltage [V]: 14

### AL-155JM

#### Alternator



NISSAN TERRANO  
RENAULT ESPACE IV (JK0/1\_)  
RENAULT LAGUNA Coupé (DT0/1)  
RENAULT LAGUNA II (BG0/1\_)  
RENAULT LAGUNA II Grandtour (KG0/1\_)  
RENAULT LAGUNA III (BT0/1)

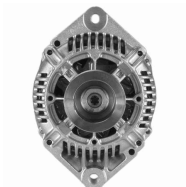
#### OE

1204193  
2310000Q0J  
231001202R  
4431340  
7711368437  
8200404459

Alternator Charge Current [A]: 150  
Belt Pulley [mm]: 49  
Clamp: M8 B+ [L-DFM]  
Number of Ribs: 7  
Pulleys: with free-wheel belt pulley  
Voltage [V]: 14

### AL-156JM

#### Alternator



FIAT BRAVA (182)  
PEUGEOT 307 Break (3E)  
RENAULT MEGANE I (BA0/1\_)  
RENAULT MEGANE I Cabriolet (EA0/1\_)  
RENAULT MEGANE I Classic (LA0/1\_)  
RENAULT MEGANE I Coach (DA0/1\_)

#### OE

12317519621  
12317519622  
1516403R  
4403214  
4403215  
4500044

Alternator Charge Current [A]: 110  
Belt Pulley [mm]: 55  
Clamp: M8 D+ W  
Number of Ribs: 6  
Pulleys: with multi-belt pulley  
Voltage [V]: 12

## Electrics

### AL-157JM

#### Alternator



SMART CABRIO (450)  
SMART CITY-COUPE (450)  
SMART CROSSBLADE (450)  
SMART FORTWO Cabrio (450)  
SMART FORTWO Coupé (450)  
SMART ROADSTER (452)

#### OE

0002801V002  
0002801V003  
0002801V004  
0002801V005  
0002801V006  
0002801V007

Alternator Charge Current [A]: 75  
Belt Pulley [mm]: 58  
Clamp: M6 B+ M5 D+ M5 ,PHIN  
Number of Ribs: 4  
Pulleys: with multi-belt pulley  
Voltage [V]: 14

### AL-158JM

#### Alternator



ALFA ROMEO GIULIETTA (940)  
FIAT 500L  
FIAT 500X  
FIAT TIPO (356)  
FIAT TIPO 2 volumi /Coda spiovente (356\_)  
FIAT TIPO Station wagon (356\_)

#### OE

17197917  
51884351  
51944891  
71796428

Alternator Charge Current [A]: 120  
Belt Pulley [mm]: 54  
Clamp: M8 B+ [LIN]  
Number of Ribs: 6  
Pulleys: with free-wheel belt pulley  
Voltage [V]: 14

### AL-159JM

#### Alternator



FIAT SEDICI  
OPEL AGILA (B) (H08)  
SUZUKI ALTO (HA24)  
SUZUKI BALENO (EG)  
SUZUKI BALENO 2 volumi /Coda spiovente (EG)  
SUZUKI BALENO Station wagon (EG)

#### OE

3140055L00  
3140055L01  
3140055L02000  
3140059J00  
3140065D00  
3140065D01

Alternator Charge Current [A]: 70  
Belt Pulley [mm]: 55  
Clamp: M6 B+ [IG-L]  
Number of Ribs: 4  
Pulleys: with multi-belt pulley  
Voltage [V]: 12

### AL-160JM

#### Alternator



FIAT DOBLO (119)  
FIAT PALIO (178BX)  
FIAT PALIO Weekend (178DX)  
FIAT PANDA (169)  
FIAT PUNTO (176)  
FIAT PUNTO (188)

#### OE

43420960  
46231693  
46407644  
46407647  
46419297  
46420960

Alternator Charge Current [A]: 75  
Belt Pulley [mm]: 60  
Clamp: M8  
Number of Ribs: 4  
Pulleys: with multi-belt pulley  
Voltage [V]: 12

### AL-161JM

#### Alternator



CHEVROLET CRUZE (J300)  
CHEVROLET CRUZE 2 volumi /Coda spiovente (J305)  
CHEVROLET CRUZE Station Wagon (J308)  
CHEVROLET TRAX  
OPEL ASTRA GTC J

#### OE

1202117  
1202118  
1202261  
1202264  
1202328  
1202338

Alternator Charge Current [A]: 140  
Belt Pulley [mm]: 60  
Clamp: M8 B+ [DFM-RVC]  
Number of Ribs: 6  
Pulleys: with free-wheel belt pulley  
Voltage [V]: 14

**Electrics**
**AL-162JM**
**Alternator**


TOYOTA HILUX II Pick-up (RN6\_, RN5\_, LN6\_, YN6\_, YN5\_, LN)  
 TOYOTA HILUX III Pick-up (TGN1\_, GGN2\_, GGN1\_, KUN2\_, KUN)  
 TOYOTA LAND CRUISER (KDJ12\_, GRJ12\_)  
 TOYOTA LAND CRUISER 150 (KDJ15\_, GRJ15\_)

**OE**

270600L010  
 270600L020  
 270600L021  
 270600L022  
 270600L02284  
 270600L030

Alternator Charge Current [A]: 100  
 Belt Pulley [mm]: 58  
 Clamp: M6 B+ [S-DFM-IG-L]  
 Number of Ribs: 7  
 Pulleys: with free-wheel belt pulley  
 Voltage [V]: 14

**AL-163JM**
**Alternator**


ALFA ROMEO 145 (930)  
 ALFA ROMEO 146 (930)  
 ALFA ROMEO 155 (167)  
 ALFA ROMEO 6 (119)  
 ALFA ROMEO 75 (162B)  
 ALFA ROMEO 90 (162)

**OE**

0005927867  
 110073  
 4423623  
 46231700  
 46231735  
 46231740

Alternator Charge Current [A]: 65  
 Belt Pulley [mm]: 62  
 Clamp: M6,D+  
 Number of Ribs: 5  
 Pulleys: with multi-belt pulley  
 Voltage [V]: 14

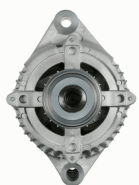
**AL-164JM**
**Alternator**


CHEVROLET CORSA Pick-up  
 CHEVROLET CORSA Station wagon  
 CHEVROLET CORSA Tre volumi  
 HONDA CIVIC VII Hatchback (EU, EP, EV)  
 OPEL ASTRA G 2 volumi /Coda spiovente (F48\_, F08\_)

**OE**

1204157  
 1204158  
 136101  
 2506101  
 31100PLZD00  
 6204182

Alternator Charge Current [A]: 100  
 Alternator Type: incl. vacuum pump  
 Belt Pulley [mm]: 60  
 Clamp: M8 B+ [L-W]  
 Number of Ribs: 6  
 Pulleys: with multi-belt pulley  
 Voltage [V]: 14

**AL-165JM**
**Alternator**


ALFA ROMEO GIULIA (952\_)  
 ALFA ROMEO GIULIETTA (940)  
 FIAT 500L  
 FIAT 500X  
 FIAT TIPO (356)  
 FIAT TIPO 2 volumi /Coda spiovente (356\_)

**OE**

51907673  
 51929089  
 71796431  
 71796434

Alternator Charge Current [A]: 150  
 Belt Pulley [mm]: 54  
 Clamp: M8 B+ [LIN]  
 Number of Ribs: 6  
 Pulleys: with free-wheel belt pulley  
 Voltage [V]: 14

**AL-166JM**
**Alternator**


MITSUBISHI CARISMA (DA\_)  
 MITSUBISHI CARISMA Tre volumi (DA\_)  
 MITSUBISHI SPACE STAR (DG\_A)  
 RENAULT AVANTIME (DE\_)  
 RENAULT CLIO II (BB0/1/2\_, CB0/1/2\_)  
 RENAULT LAGUNA I (B56\_, 556\_)

**OE**

1800A043  
 2310000Q0A  
 2310000Q0D  
 2310000Q0E  
 2310000Q0K  
 2310000Q1F

Alternator Charge Current [A]: 120  
 Belt Pulley [mm]: 49  
 Clamp: M8 B+ [L-DFM]  
 Number of Ribs: 6  
 Pulleys: with free-wheel belt pulley  
 Voltage [V]: 14

## Electrics

### AL-167JM

#### Alternator



CHRYSLER 300 C (LX)  
CHRYSLER 300 C Touring (LX)  
JEEP COMMANDER (XK)  
JEEP GRAND CHEROKEE III (WH, WK)  
MERCEDES-BENZ CLASSE C (W203)  
MERCEDES-BENZ CLASSE C (W204)

**OE**  
0009062700  
00090627000087  
000906270080  
000906270087  
04801250AA  
04801250AB

Alternator Charge Current [A]: 180  
Belt Pulley [mm]: 50  
Clamp: M8 B+ [LIN]  
Number of Ribs: 7  
Pulleys: with free-wheel belt pulley  
Voltage [V]: 12

### AL-168JM

#### Alternator



ALFA ROMEO 145 (930)  
ALFA ROMEO 155 (167)  
FIAT BARCHETTA (183)  
FIAT BRAVA (182)  
FIAT BRAVO I (182)  
FIAT COUPE (FA/175)

**OE**  
0046430531  
1516426R  
46231670  
46231671  
46231722  
46231724

Alternator Charge Current [A]: 100  
Belt Pulley [mm]: 62  
Clamp: M8  
Number of Ribs: 6  
Pulleys: with multi-belt pulley  
Voltage [V]: 12

### AL-169JM

#### Alternator



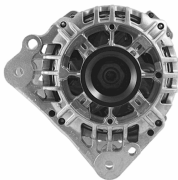
HYUNDAI ELANTRA Tre volumi (MD, UD)  
HYUNDAI i20  
HYUNDAI i20 (PB, PBT)  
HYUNDAI i30 (FD)  
HYUNDAI i30 (GD)  
HYUNDAI i30 Coupé

**OE**  
3730002A651  
373002A400  
373002A401  
373002A450  
373002A600  
373002A601

Alternator Charge Current [A]: 130  
Belt Pulley [mm]: 57  
Clamp: M8 B+ [C-L-FR]  
Number of Ribs: 5  
Pulleys: with free-wheel belt pulley  
Voltage [V]: 14

### AL-170JM

#### Alternator



AUDI A2 (8Z0)  
SEAT ALHAMBRA (7V8, 7V9)  
SEAT ALTEA (5P1)  
SEAT ALTEA XL (5P5, 5P8)  
SEAT AROSA (6H)  
SEAT CORDOBA (6K2)

**OE**  
028903018RX  
028903026P  
0303903023N  
036903018B  
036903018BX  
036903024D

Alternator Charge Current [A]: 110  
Belt Pulley [mm]: 50  
Clamp: M8 B+ [L-DFM]  
Number of Ribs: 6  
Pulleys: with multi-belt pulley  
Voltage [V]: 12

### AL-171JM

#### Alternator



HYUNDAI ELANTRA (XD)  
HYUNDAI ELANTRA Tre volumi (XD)  
HYUNDAI GRANDEUR (TG)  
HYUNDAI i30 (FD)  
HYUNDAI i30 CW (FD)  
HYUNDAI SANTA FÉ I (SM)

**OE**  
2730027012  
3730027010  
3730027011  
3730027012  
3730027012AT  
3730027013

Alternator Charge Current [A]: 120  
Alternator Type: incl. vacuum pump  
Belt Pulley [mm]: 60  
Clamp: M8 B+ [L-S]  
Number of Ribs: 6  
Pulleys: with free-wheel belt pulley  
Voltage [V]: 14

**Electrics**
**AL-172JM**
**Alternator**


FIAT 500 (312)  
 FIAT 500 C (312)  
 FIAT DOBLO (119)  
 FIAT FIORINO MPV / Space wagon (225\_)  
 FIAT GRANDE PUNTO (199)  
 FIAT IDEA

**OE**

1204432  
 13117278  
 13256930  
 13283343  
 1539098  
 1571296

Alternator Charge Current [A]: 90  
 Belt Pulley [mm]: 54  
 Clamp: M8 B+M5 D+  
 Number of Ribs: 6  
 Pulleys: with multi-belt pulley  
 Voltage [V]: 14

**AL-173JM**
**Alternator**


MINI MINI (R50, R53)

**OE**

12317790879  
 2706033050  
 2706033051  
 7790879

Alternator Charge Current [A]: 100  
 Belt Pulley [mm]: 60  
 Clamp: M8 [C-FR-IG-L]  
 Number of Ribs: 7  
 Pulleys: with free-wheel belt pulley  
 Voltage [V]: 12

**AL-174JM**
**Alternator**


ALFA ROMEO GT (937)  
 CITROEN C5 I (DC\_)  
 CITROEN C5 I Break (DE\_)  
 CITROEN C8 (EA\_, EB\_)  
 CITROEN XANTIA (X2)  
 CITROEN XANTIA Break (X2)

**OE**

130722  
 3140068D00  
 3140068D00000  
 3140068D01  
 3140068D02  
 3140068D02000

Alternator Charge Current [A]: 150  
 Belt Pulley [mm]: 54  
 Clamp: M8 B+ M5 D+  
 Number of Ribs: 6  
 Pulleys: with free-wheel belt pulley  
 Voltage [V]: 14

**AL-175JM**
**Alternator**


TOYOTA YARIS (SCP1\_, NLP1\_, NCP1\_)  
 TOYOTA YARIS VERSO (\_NLP2\_, \_NCP2\_)

**OE**

2706033010  
 2706033020  
 2706033040

Alternator Charge Current [A]: 90  
 Belt Pulley [mm]: 60  
 Clamp: M6 [FR-IG-L]  
 Number of Ribs: 5  
 Pulleys: with free-wheel belt pulley  
 Voltage [V]: 12

**AL-176JM**
**Alternator**


FIAT CROMA (194)  
 FIAT GRANDE PUNTO (199)  
 FIAT STILO (192)  
 FIAT STILO Multi Wagon (192)  
 OPEL ASTRA H (L48)  
 OPEL ASTRA H GTC (L08)

**OE**

1204433  
 13117340  
 6204187  
 6204293  
 71755143  
 75814308

Alternator Charge Current [A]: 105  
 Belt Pulley [mm]: 62  
 Clamp: M8 B+ M5 D+  
 Number of Ribs: 6  
 Pulleys: with free-wheel belt pulley  
 Voltage [V]: 14

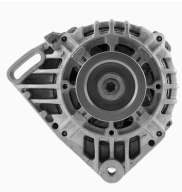
**Electrics**
**AL-177JM**
**Alternator**


FORD TRANSIT Autobus (FD\_-, FB\_-, FS\_-, FZ\_-, FC\_-,  
 FORD TRANSIT Furgonato (FA\_-,  
 FORD TRANSIT Pianale piatto/Telaio (FM\_-, FN\_-,  
 -))

**OE**

1498518  
 1516508R  
 2C1T1 0300 BA  
 2C1T1 0300 BB  
 2C1T10300BA  
 2C1T10300BB

Alternator Charge Current [A]: 110  
 Belt Pulley [mm]: 59  
 Clamp: M6 B+ [L-DFM-S]  
 Number of Ribs: 7  
 Pulleys: with free-wheel belt pulley  
 Voltage [V]: 14

**AL-178JM**
**Alternator**


DACIA LOGAN (LS\_-)  
 DACIA LOGAN II  
 DACIA LOGAN MCV II  
 DACIA SANDERO  
 DACIA SANDERO II  
 RENAULT CLIO II (BB0/1/2\_-, CB0/1/2\_-)

**OE**

130712  
 2310000G1H  
 2310000GAT  
 2310000Q1C  
 2310000Q1D  
 2310000Q1H

Alternator Charge Current [A]: 95  
 Belt Pulley [mm]: 65  
 Clamp: M8 B+[L]  
 Number of Ribs: 3  
 Pulleys: with multi-belt pulley  
 Voltage [V]: 14

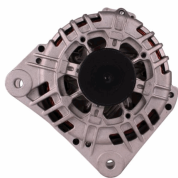
**AL-179JM**
**Alternator**


HYUNDAI GALLOPER I  
 HYUNDAI GALLOPER II (JK-01)  
 HYUNDAI TERRACAN (HP)  
 MITSUBISHI GALLOPER (JK-01)

**OE**

3730042540  
 3730042542  
 3730042860  
 3730042861  
 3730042862  
 3730042863

Alternator Charge Current [A]: 90  
 Alternator Type: incl. vacuum pump  
 Belt Pulley [mm]: 76  
 Clamp: M6 B+ [L-S]  
 Number of Ribs: 2  
 Pulleys: Without multi-belt pulley  
 Voltage [V]: 14

**AL-180JM**
**Alternator**


DACIA LOGAN (LS\_-)  
 DACIA LOGAN MCV (KS\_-)  
 DACIA LOGAN Pick-up (US\_-)  
 DACIA SANDERO  
 RENAULT CLIO IV  
 RENAULT KANGOO (KC0/1\_-)

**OE**

1204189  
 1204489  
 2310000QAU  
 2310000QBE  
 2310000QBG  
 2310000QOE

Alternator Charge Current [A]: 125  
 Belt Pulley [mm]: 54  
 Clamp: M8 B+[L]  
 Number of Ribs: 5  
 Pulleys: with free-wheel belt pulley  
 Voltage [V]: 12

**AL-181JM**
**Alternator**


TOYOTA YARIS (SCP1\_-, NLP1\_-, NCP1\_-)  
 TOYOTA YARIS VERSO (\_NLP2\_-, \_NCP2\_-)

**OE**

270600J010  
 270600J020  
 270600J030  
 270600J040  
 2706023040  
 270600J020

Alternator Charge Current [A]: 90  
 Belt Pulley [mm]: 55  
 Clamp: M6 [FR-IG-L]  
 Number of Ribs: 6  
 Pulleys: with multi-belt pulley  
 Voltage [V]: 12

**Electrics**
**AL-182JM**
**Alternator**


TOYOTA AVENSIS (T25\_)  
 TOYOTA AVENSIS Station wagon (T25)  
 TOYOTA AVENSIS Tre volumi (T25)  
 TOYOTA COROLLA (ZZE12\_, NDE12\_, ZDE12\_)  
 TOYOTA COROLLA (\_E11\_)  
 TOYOTA COROLLA Compact (\_E11\_)

**OE**

2706027040  
 270602704084  
 2706027050  
 2706027060  
 2706027070  
 2706027090

Alternator Charge Current [A]: 130  
 Belt Pulley [mm]: 58  
 Clamp: M6 B+ [S-DFM-IG-L]  
 Number of Ribs: 5  
 Pulleys: with free-wheel belt pulley  
 Voltage [V]: 14

**AL-183JM**
**Alternator**


FORD MAVERICK (UDS, UNS)  
 NISSAN TERRANO II (R20)

**OE**

1959007  
 2310069T60  
 231007F000  
 231007F001

Alternator Charge Current [A]: 80  
 Belt Pulley [mm]: 80  
 Clamp: M8  
 Number of Ribs: 1  
 Pulleys: Without multi-belt pulley  
 Voltage [V]: 12

**AL-184JM**
**Alternator**


DACIA LOGAN (LS\_)  
 DACIA LOGAN MCV (KS\_)  
 DACIA LOGAN Pick-up (US\_)  
 DACIA SANDERO  
 RENAULT CLIO II (BB0/1/2\_, CB0/1/2\_)  
 RENAULT ESPACE III (JE0\_)

**OE**

2310000QBC  
 27060165FL  
 6001548061  
 6601548061  
 7700101274  
 7700421477

Alternator Charge Current [A]: 98  
 Belt Pulley [mm]: 55  
 Clamp: M8 B+ [L-DFM]  
 Number of Ribs: 6  
 Pulleys: with multi-belt pulley  
 Voltage [V]: 14

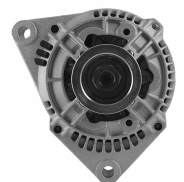
**AL-185JM**
**Alternator**


CITROEN AX (ZA\_)  
 CITROEN SAXO (S0, S1)  
 CITROEN XSARA (N1)  
 CITROEN XSARA Break (N2)  
 CITROEN ZX Break (N2)  
 NISSAN MICRA II (K11)

**OE**

12312244818  
 12312244819  
 130555  
 5701A5  
 5701A6  
 5701A6(X)

Alternator Charge Current [A]: 95  
 Belt Pulley [mm]: 55  
 Clamp: M8  
 Number of Ribs: 5  
 Pulleys: with multi-belt pulley  
 Voltage [V]: 12

**AL-186JM**
**Alternator**


DAEWOO KORANDO (KJ)  
 DAEWOO KORANDO Cabrio (KJ)  
 DAEWOO MUSSO (FJ)  
 MERCEDES-BENZ 190 (W201)  
 MERCEDES-BENZ CLASSE C (W202)  
 MERCEDES-BENZ CLASSE C Station wagon

**OE**

0081545102  
 0081545202  
 008154520280  
 0081549602  
 008154960280  
 0081549702

Alternator Charge Current [A]: 90  
 Belt Pulley [mm]: 55  
 Clamp: M8 B+ M5 D+  
 Number of Ribs: 6  
 Pulleys: with multi-belt pulley  
 Voltage [V]: 14

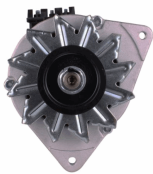
**Electrics**
**AL-187JM**
**Alternator**


AUDI A3 Cabriolet (8P7)  
 AUDI A4 (8EC, B7)  
 AUDI A4 Avant (8ED, B7)  
 CHRYSLER SEBRING (JS)  
 CHRYSLER SEBRING Cabriolet (JS)  
 DODGE AVENGER

**OE**

021903026  
 021903026A  
 021903026B  
 021903026G  
 021903026GX  
 021903026L

Alternator Charge Current [A]: 180  
 Belt Pulley [mm]: 56  
 Clamp: M8 B+ [L-DFM]  
 Number of Ribs: 6  
 Pulleys: with free-wheel belt pulley  
 Voltage [V]: 14

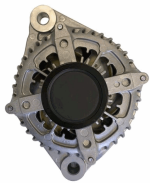
**AL-188JM**
**Alternator**


FORD SCORPIO II (GFR, GGR)  
 FORD SCORPIO II Station wagon (GMR, GGR)

**OE**

1406060  
 1406068  
 1406091  
 1406105  
 1516401R  
 1668894

Alternator Charge Current [A]: 70  
 Alternator Type: incl. vacuum pump  
 Belt Pulley [mm]: 67  
 Clamp: M6 B+, M5 D+ M5 W  
 Number of Ribs: 4  
 Pulleys: with multi-belt pulley  
 Voltage [V]: 14

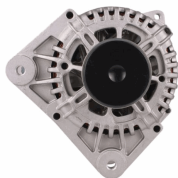
**AL-189JM**
**Alternator**


ALFA ROMEO GIULIETTA (940)  
 FIAT 500L  
 FIAT 500X  
 FIAT TIPO (356)  
 FIAT TIPO 2 volumi /Coda spiovente (356\_)  
 FIAT TIPO Station wagon (356\_)

**OE**

52067418  
 52083172  
 55280473  
 68348758AB  
 71798219  
 K68348758AB

Alternator Charge Current [A]: 180  
 Belt Pulley [mm]: 54  
 Clamp: M8 B+ [LIN]  
 Number of Ribs: 6  
 Pulleys: with free-wheel belt pulley  
 Voltage [V]: 14

**AL-190JM**
**Alternator**


DACIA DUSTER  
 DACIA LOGAN (LS\_)  
 DACIA LOGAN MCV (KS\_)  
 DACIA LOGAN Pick-up (US\_)  
 DACIA SANDERO  
 NISSAN MICRA III (K12)

**OE**

2310000Q2C  
 2310000Q2R  
 7711368356  
 8200386806  
 8200667608

Alternator Charge Current [A]: 110  
 Belt Pulley [mm]: 55  
 Clamp: M8 B+ [L-DFM]  
 Number of Ribs: 6  
 Pulleys: with free-wheel belt pulley  
 Voltage [V]: 14

**AL-191JM**
**Alternator**


CHEVROLET CAPTIVA (C100, C140)  
 CHEVROLET EPICA (KL1\_)  
 CHEVROLET LACETTI (J200)  
 CHEVROLET LACETTI Station wagon (J200)  
 CHEVROLET NUBIRA Station wagon  
 CHEVROLET NUBIRA Tre volumi

**OE**

1202430  
 1202485  
 4805450  
 4811550  
 4817806  
 95519920

Alternator Charge Current [A]: 120  
 Belt Pulley [mm]: 56  
 Clamp: M8 B+, F-L  
 Number of Ribs: 6  
 Pulleys: with free-wheel belt pulley  
 Voltage [V]: 14

## Electrics

### AL-192JM

#### Alternator



TOYOTA YARIS (SCP9\_, NSP9\_, KSP9\_, NCP9\_, ZSP9\_)

**OE**  
270600N011

Alternator Charge Current [A]: 90  
Belt Pulley [mm]: 62  
Clamp: M6 B+ [S-DFM-IG-L]  
Number of Ribs: 6  
Pulleys: with free-wheel belt pulley  
Voltage [V]: 14

### AL-193JM

#### Alternator



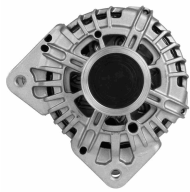
TOYOTA YARIS (SCP9\_, NSP9\_, KSP9\_, NCP9\_, ZSP9\_)

**OE**  
270600Q030  
270600Q040  
2706040010  
2706040020

Alternator Charge Current [A]: 90  
Belt Pulley [mm]: 57  
Clamp: M6 B+ [S-DFM-IG-L]  
Number of Ribs: 6  
Pulleys: with multi-belt pulley  
Voltage [V]: 14

### AL-194JM

#### Alternator



NISSAN ALMERA II (N16)  
NISSAN ALMERA II Hatchback (N16)  
NISSAN MICRA III (K12)  
RENAULT CLIO II (BB0/1/2\_, CB0/1/2\_)  
RENAULT GRAND SCÉNIC II (JM0/1\_)  
RENAULT KANGOO (KC0/1\_)

**OE**  
2310000QAB  
2310000QBB  
2310000QBJ  
2310000QBK  
231006313R  
23100BN701

Alternator Charge Current [A]: 150  
Belt Pulley [mm]: 54  
Clamp: M8 B+ [L-DFM]  
Number of Ribs: 5  
Pulleys: with free-wheel belt pulley  
Voltage [V]: 14

### AL-195JM

#### Alternator



TOYOTA YARIS (NHP13\_, NSP13\_, NCP13\_, KSP13\_, NLP13\_)

**OE**  
270600Q140  
2706040090

Alternator Charge Current [A]: 90  
Belt Pulley [mm]: 60  
Clamp: M6 B+ [LIN]  
Number of Ribs: 6  
Pulleys: with multi-belt pulley  
Voltage [V]: 14

### AL-196JM

#### Alternator



TOYOTA BELTA  
TOYOTA VIOS/YARIS Tre volumi (ZSP9\_, NCP9\_)  
TOYOTA YARIS (SCP9\_, NSP9\_, KSP9\_, NCP9\_, ZSP9\_)

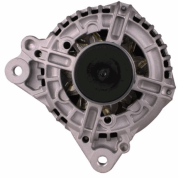
**OE**  
270600J051  
270600J061  
270600J070

Alternator Charge Current [A]: 90  
Belt Pulley [mm]: 55  
Clamp: M6 B+ [S-DFM-IG-L]  
Number of Ribs: 6  
Pulleys: with multi-belt pulley  
Voltage [V]: 14

## Electrics

### AL-197JM

#### Alternator



AUDI A4 (8D2, B5)  
AUDI A4 (8E2, B6)  
AUDI A4 Avant (8D5, B5)  
AUDI A4 Avant (8E5, B6)  
AUDI A6 (4B2, C5)  
AUDI A6 Avant (4B5, C5)

#### OE

028903018K  
028903029B  
028903029BX  
028903029C  
028903029E  
028903029EX

Alternator Charge Current [A]: 140  
Belt Pulley [mm]: 56  
Clamp: M8 B+ [L-DFM]  
Number of Ribs: 5  
Pulleys: with free-wheel belt pulley  
Voltage [V]: 12

### AL-198JM

#### Alternator



OPEL ASTRA G 2 volumi /Coda spiovente (F48\_, F08\_)  
OPEL ASTRA G Cabriolet (F67)  
OPEL ASTRA G Coupe (F07\_)  
OPEL ASTRA G Station wagon (F35\_)  
OPEL ASTRA G Tre volumi (F69\_)

#### OE

074903025J  
09133601  
10457917  
1204134  
1204160  
13108596

Alternator Charge Current [A]: 140  
Belt Pulley [mm]: 50  
Clamp: M8 B+ M5 D+  
Number of Ribs: 6  
Pulleys: with multi-belt pulley  
Voltage [V]: 14

### AL-199JM

#### Alternator



TOYOTA AURIS (NRE15\_, ZZE15\_, ADE15\_, ZRE15\_, NDE15\_)  
TOYOTA COROLLA Tre volumi (E15\_)  
TOYOTA URBAN CRUISER (NSP1\_, NLP1\_, ZSP1\_, NCP11\_)  
TOYOTA YARIS (SCP9\_, NSP9\_, KSP9\_, NCP9\_)

#### OE

270600N040  
270600N050  
2706033100

Alternator Charge Current [A]: 100  
Belt Pulley [mm]: 58  
Clamp: M6 B+ [RLO-DFM-IG-L]  
Number of Ribs: 6  
Pulleys: with free-wheel belt pulley  
Voltage [V]: 14

### AL-200JM

#### Alternator



OPEL ASTRA H (L48)  
OPEL ASTRA H GTC (L08)  
OPEL ASTRA H Station wagon (L35)  
OPEL ASTRA H TwinTop (L67)  
OPEL SIGNUM  
OPEL VECTRA C

#### OE

1202115  
1202116  
1204422  
1204427  
13229990  
13229991

Alternator Charge Current [A]: 140  
Belt Pulley [mm]: 54  
Clamp: M8 B+ [DFM-L]  
Number of Ribs: 6  
Pulleys: with free-wheel belt pulley  
Voltage [V]: 14

### AL-201JM

#### Alternator



FORD B-MAX (JK)  
FORD C-MAX II  
FORD ECOSPORT  
FORD FIESTA Tre volumi  
FORD FIESTA VI  
FORD FOCUS III

#### OE

1469714  
1685794  
1698214  
1871861  
1928875  
2119650

Alternator Charge Current [A]: 120  
Belt Pulley [mm]: 49  
Clamp: M8 B+ [LIN]  
Number of Ribs: 6  
Pulleys: with multi-belt pulley  
Voltage [V]: 14

**Electrics**
**AL-202JM**
**Alternator**


CITROEN BERLINGO (MF)  
 CITROEN C5 I (DC\_)  
 CITROEN C5 I Break (DE\_)  
 CITROEN C8 (EA\_, EB\_)  
 CITROEN EVASION (22, U6)  
 CITROEN XANTIA (X2)

**OE**  
 06C903016B  
 06C903016BX  
 078903016S  
 1516481R  
 570520  
 57052D

Alternator Charge Current [A]: 150  
 Belt Pulley [mm]: 54  
 Clamp: M8 B+ M5 D+  
 Number of Ribs: 6  
 Pulleys: with multi-belt pulley  
 Voltage [V]: 14

**AL-203JM**
**Alternator**


FORD FIESTA V (JH\_, JD\_)  
 FORD FUSION (JU\_)  
 MAZDA 2 (DY)

**OE**  
 1140136  
 1485762  
 1519795  
 1760757  
 2S6T10300BA  
 2S6T10300BB

Alternator Charge Current [A]: 150  
 Belt Pulley [mm]: 54  
 Clamp: M8 B+ [FR-SIG-A]  
 Number of Ribs: 6  
 Pulleys: with free-wheel belt pulley  
 Voltage [V]: 14

**AL-204JM**
**Alternator**


FORD C-MAX (DM2)  
 FORD FIESTA V (JH\_, JD\_)  
 FORD FOCUS (DAW, DBW)  
 FORD FOCUS C-MAX  
 FORD FOCUS II (DA\_)  
 FORD FOCUS II Cabriolet

**OE**  
 1064383  
 1070806  
 1073090  
 1090084  
 1090085  
 1097305

Alternator Charge Current [A]: 105  
 Belt Pulley [mm]: 48  
 Clamp: M8 B+ [FR-SIG-A]  
 Number of Ribs: 6  
 Pulleys: with multi-belt pulley  
 Voltage [V]: 14

**AL-205JM**
**Alternator**


CITROEN BERLINGO (MF)  
 CITROEN EVASION (22, U6)  
 CITROEN XANTIA (X1)  
 CITROEN XANTIA Break (X1)  
 CITROEN XM (Y4)  
 CITROEN XM Break (Y4)

**OE**  
 1516404R  
 1516411R  
 1516417R  
 3140065G00  
 3140065G00000  
 3292554

Alternator Charge Current [A]: 120  
 Belt Pulley [mm]: 61  
 Clamp: M8  
 Number of Ribs: 6  
 Pulleys: with multi-belt pulley  
 Voltage [V]: 12

**AL-206JM**
**Alternator**


CITROEN BERLINGO (B9)  
 CITROEN C3 II  
 CITROEN C3 Picasso  
 CITROEN C4 Coupé (LA\_)  
 CITROEN C4 Grand Picasso I (UA\_)  
 CITROEN C4 Grand Picasso II

**OE**  
 12317535098  
 12317553009  
 12317562388  
 12317574365  
 12317575650  
 12317575779

Alternator Charge Current [A]: 150  
 Belt Pulley [mm]: 49  
 Clamp: M6 B+ [BSS]  
 Number of Ribs: 6  
 Pulleys: with free-wheel belt pulley  
 Voltage [V]: 14

## Electrics

### AL-207JM

#### Alternator



OPEL ASTRA G 2 volumi /Coda spiovente (F48\_, F08\_)  
 OPEL ASTRA G Cabriolet (F67)  
 OPEL ASTRA G CLASSIC (T98)  
 OPEL ASTRA G CLASSIC Caravan (F35)  
 OPEL ASTRA G CLASSIC Tre volumi (T98)

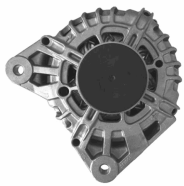
#### OE

1204108  
 1204121  
 13125229  
 13147093  
 13156050  
 13156054

Alternator Charge Current [A]: 120  
 Belt Pulley [mm]: 54  
 Clamp: M8  
 Number of Ribs: 5  
 Pulleys: with multi-belt pulley  
 Voltage [V]: 12

### AL-208JM

#### Alternator



DACIA DOKKER  
 DACIA DUSTER  
 DACIA LODGY  
 DACIA LOGAN II  
 DACIA LOGAN MCV II  
 DACIA SANDERO II

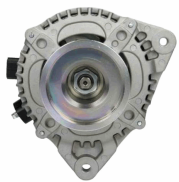
#### OE

2310007865A  
 2310007865R  
 231001318R  
 231003424R  
 231007865R  
 231007865RA

Alternator Charge Current [A]: 120  
 Belt Pulley [mm]: 55  
 Clamp: M8 B+ [LIN]  
 Number of Ribs: 6  
 Pulleys: with free-wheel belt pulley  
 Voltage [V]: 14

### AL-209JM

#### Alternator



FORD C-MAX (DM2)  
 FORD FOCUS C-MAX  
 FORD FOCUS II (DA\_)  
 FORD FOCUS II Station wagon (DA\_)  
 FORD FOCUS II Tre volumi (DA\_)

#### OE

1302007  
 132974  
 1352425  
 1352431  
 1477740  
 1677167

Alternator Charge Current [A]: 150  
 Belt Pulley [mm]: 78  
 Clamp: M8 B+ [FR-SIG-A]  
 Pulleys: Without multi-belt pulley  
 Voltage [V]: 14

### AL-210JM

#### Alternator



CITROEN BERLINGO (B9)  
 CITROEN C-CROSSER (EP\_)  
 CITROEN C4 Coupé (LA\_)  
 CITROEN C4 Grand Picasso I (UA\_)  
 CITROEN C4 I (LC\_)  
 CITROEN C4 Picasso I (UD\_)

#### OE

1800A138  
 56547528ON80  
 570200  
 5702000  
 5702E2  
 5702E3

Alternator Charge Current [A]: 180  
 Belt Pulley [mm]: 54  
 Clamp: M8 B+ [L-DFM]  
 Number of Ribs: 6  
 Pulleys: with free-wheel belt pulley  
 Voltage [V]: 14

### AL-211JM

#### Alternator



FIAT BRAVA (182)  
 FIAT BRAVO I (182)  
 FIAT PALIO (178BX)  
 FIAT PALIO Weekend (178DX)  
 FIAT PUNTO (176)  
 FIAT SIENA (178\_)

#### OE

46000357  
 46231699  
 46407645  
 46420961  
 46420964  
 46420965

Alternator Charge Current [A]: 85  
 Belt Pulley [mm]: 60  
 Clamp: M8  
 Number of Ribs: 6  
 Pulleys: with multi-belt pulley  
 Voltage [V]: 12

## Electrics

### AL-212JM

#### Alternator



MERCEDES-BENZ CLASSE C (W204)  
 MERCEDES-BENZ CLASSE C Coupé (C204)  
 MERCEDES-BENZ CLASSE C T-Model (S204)  
 MERCEDES-BENZ CLASSE E (W212)  
 MERCEDES-BENZ CLASSE E Cabriolet (A207)  
 MERCEDES-BENZ CLASSE E Coupé (C207)

#### OE

0009063622  
 0009068802  
 000906880280  
 0131546802  
 01315468020  
 01315468020080

Alternator Charge Current [A]: 180  
 Belt Pulley [mm]: 50  
 Clamp: M8 B+ [LIN]  
 Number of Ribs: 6  
 Pulleys: with free-wheel belt pulley  
 Voltage [V]: 14

### AL-213JM

#### Alternator



OPEL ASTRA GTC J  
 OPEL ASTRA J  
 OPEL ASTRA J Sports Tourer  
 OPEL INSIGNIA  
 OPEL INSIGNIA A Country Tourer (G09)  
 OPEL INSIGNIA Station wagon

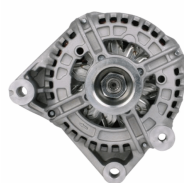
#### OE

1202236  
 1202423  
 1204643  
 95519835

Alternator Charge Current [A]: 100  
 Belt Pulley [mm]: 54  
 Clamp: M8 B+ [ F-L]  
 Number of Ribs: 6  
 Pulleys: with free-wheel belt pulley  
 Voltage [V]: 14

### AL-214JM

#### Alternator



BMW 3 (E90)  
 BMW 3 Cabriolet (E93)  
 BMW 3 Coupé (E92)  
 BMW 3 Touring (E91)  
 BMW 5 (E60)  
 BMW 5 Touring (E61)

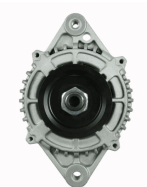
#### OE

12317788821  
 12317789981  
 12317789984  
 12317792072  
 12317797521  
 12317797522

Alternator Charge Current [A]: 170  
 Belt Pulley [mm]: 53  
 Clamp: M6 B+ [COM-BSS]  
 Number of Ribs: 6  
 Pulleys: with multi-belt pulley  
 Voltage [V]: 14

### AL-215JM

#### Alternator



CHEVROLET MATIZ (M200, M250)  
 DAEWOO MATIZ

#### OE

AB165104

Alternator Charge Current [A]: 65  
 Belt Pulley [mm]: 64  
 Clamp: M6 B [ IG-L]  
 Number of Ribs: 3  
 Pulleys: with multi-belt pulley  
 Voltage [V]: 14

### AL-216JM

#### Alternator



PEUGEOT 308 (4A\_, 4C\_)  
 RENAULT GRAND SCÉNIC II (JM0/1\_)  
 RENAULT KANGOO (KC0/1\_)  
 RENAULT KANGOO / GRAND KANGOO (KW0/1\_)  
 RENAULT KANGOO BE BOP (KW0/1\_)  
 RENAULT MEGANE II (BM0/1\_, CM0/1\_)

#### OE

231008578R  
 7701475896  
 7701476812  
 7711368380  
 7711368719  
 8200390675

Alternator Charge Current [A]: 100  
 Belt Pulley [mm]: 55  
 Clamp: M6 B+ [BSS]  
 Number of Ribs: 6  
 Pulleys: with free-wheel belt pulley  
 Voltage [V]: 14

**Electrics**
**AL-217JM**
**Alternator**


AUDI A6 (4F2, C6)  
 AUDI A6 Allroad (4FH, C6)  
 AUDI A6 Avant (4F5, C6)  
 AUDI A8 (4E\_)  
 AUDI Q7 (4L)  
 VW TOUAREG (7LA, 7L6, 7L7)

**OE**

059903015R  
 059903015RX  
 059903017K  
 059903017KX  
 06C903016H  
 06C903016HX

Alternator Charge Current [A]: 180  
 Belt Pulley [mm]: 57  
 Clamp: M6 B+ [COM-BSS]  
 Number of Ribs: 6  
 Pulleys: with multi-belt pulley  
 Voltage [V]: 14

**AL-218JM**
**Alternator**


SMART CABRIO (450)  
 SMART CITY-COUPE (450)  
 SMART FORTWO Cabrio (450)  
 SMART FORTWO Coupé (450)

**OE**

0004717V005  
 0004717V005000000  
 0004717V006  
 0111548002  
 011154800280  
 4717V00500

Alternator Charge Current [A]: 85  
 Belt Pulley [mm]: 53  
 Clamp: M8 B+ [L-DFM]  
 Number of Ribs: 5  
 Pulleys: with multi-belt pulley  
 Voltage [V]: 14

**AL-219JM**
**Alternator**


AUDI A1 (8X1, 8XF)  
 AUDI A1 Sportback (8XA, 8XK)  
 AUDI A3 (8P1)  
 AUDI A3 Cabriolet (8P7)  
 AUDI A3 Sportback (8PA)  
 AUDI Q3 (8U)

**OE**

03L903023  
 03L903023A  
 03L903023AX  
 03L903023X  
 03L903024  
 03L903024M

Alternator Charge Current [A]: 140  
 Belt Pulley [mm]: 56  
 Clamp: M8 B+ [LIN]  
 Number of Ribs: 6  
 Pulleys: with free-wheel belt pulley  
 Voltage [V]: 14

**AL-220JM**
**Alternator**


SUZUKI JIMNY (FJ)

**OE**

3140084A10  
 3140084A10000  
 3140084A11  
 3140084A11000  
 3140084A12  
 3140084A12000

Alternator Charge Current [A]: 100  
 Alternator Type: incl. vacuum pump  
 Belt Pulley [mm]: 54  
 Clamp: M8 B+ [L-R]  
 Number of Ribs: 6  
 Pulleys: with free-wheel belt pulley  
 Voltage [V]: 14

**AL-221JM**
**Alternator**


HYUNDAI ACCENT III (MC)  
 HYUNDAI ACCENT III Tre volumi (MC)  
 HYUNDAI ACCENT IV Tre volumi (RB)  
 HYUNDAI GETZ (TB)  
 HYUNDAI i10 (PA)  
 HYUNDAI i20

**OE**

373002A000  
 373002A010  
 373002A011  
 373002A050  
 373002A100  
 373002A110

Alternator Charge Current [A]: 120  
 Belt Pulley [mm]: 57  
 Clamp: M8 B+ [L]  
 Number of Ribs: 5  
 Pulleys: with free-wheel belt pulley  
 Voltage [V]: 14

**Electrics**
**AL-222JM**
**Alternator**


PIAGGIO QUARGO Pianale piatto/Telaio

**OE**  
 1157326  
 1157397  
 1758064010  
 JFZ155A

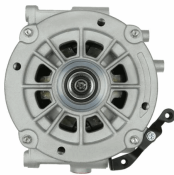
 Alternator Charge Current [A]: 40  
 Belt Pulley [mm]: 63  
 Clamp: M6 [IG-L]  
 Number of Ribs: 1  
 Pulleys: Without multi-belt pulley  
 Voltage [V]: 12

**AL-223JM**
**Alternator**

 OPEL ASTRA CLASSIC (L48)  
 OPEL ASTRA CLASSIC Station wagon  
 OPEL ASTRA CLASSIC Tre volumi  
 OPEL ASTRA H (L48)  
 OPEL ASTRA H GTC (L08)  
 OPEL ASTRA H Station wagon (L35)

**OE**  
 1202424  
 1204197  
 1204424  
 1204425  
 1207197  
 6204274

 Alternator Charge Current [A]: 140  
 Belt Pulley [mm]: 60  
 Clamp: M8 B+ [F-L]  
 Number of Ribs: 6  
 Pulleys: with free-wheel belt pulley  
 Voltage [V]: 14

**AL-224JM**
**Alternator**

 MERCEDES-BENZ CLASSE C (W203)  
 MERCEDES-BENZ CLASSE C Coupe (CL203)  
 MERCEDES-BENZ CLASSE C T-Model (S203)  
 MERCEDES-BENZ CLASSE E (W210)  
 MERCEDES-BENZ CLASSE E Station wagon (S210)

**OE**  
 00011501750  
 00011502550  
 0001501750  
 0001502450  
 0001502550  
 A00011502550

 Alternator Charge Current [A]: 190  
 Belt Pulley [mm]: 50  
 Clamp: M8 B+ [L-DFM]  
 Number of Ribs: 6  
 Pulleys: with free-wheel belt pulley  
 Voltage [V]: 12

**AL-225JM**
**Alternator**

 FORD FOCUS (DAW, DBW)  
 FORD FOCUS Station wagon (DNW)  
 FORD FOCUS Tre volumi (DFW)  
 FORD TOURNEO CONNECT

**OE**  
 1229421  
 1376671  
 1376672  
 1376695  
 1429688  
 1429689

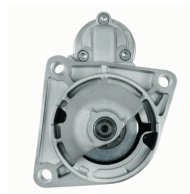
 Alternator Charge Current [A]: 120  
 Belt Pulley [mm]: 78,5  
 Clamp: M6 + [S-SIG-FR]  
 Pulleys: Without multi-belt pulley  
 Voltage [V]: 14

**AL-226JM**
**Alternator**

 MERCEDES-BENZ CLASSE A (W168)  
 MERCEDES-BENZ Vaneo (414)

**OE**  
 0101543802  
 010154380280  
 0111543502  
 011154350280  
 0111545602  
 011154560280

 Alternator Charge Current [A]: 90  
 Belt Pulley [mm]: 51  
 Clamp: M8 B+M5 D+  
 Number of Ribs: 5  
 Pulleys: with multi-belt pulley  
 Voltage [V]: 14

**Electrics**
**MT-101JM**
**Starter**


ALFA ROMEO 145 (930)  
 ALFA ROMEO 146 (930)  
 ALFA ROMEO 147 (937)  
 ALFA ROMEO 156 (932)  
 ALFA ROMEO 156 Sportwagon (932)  
 ALFA ROMEO 159 (939)

**OE**

1202282  
 3110079J00  
 3110079J00000  
 31100H79J00  
 31100H79J00000  
 31100T79J00

Clamp: Pin "30" M8 B+  
 Clamp: Pin "50" M6  
 Flange [mm]: 81,5  
 Number of mounting bores: 3  
 Number of Teeth: 9  
 Number of Thread Bores: 0  
 Rated Power [kW]: 2  
 Rotation Direction: Clockwise rotation  
 Voltage [V]: 12

**MT-102JM**
**Starter**


ALFA ROMEO MITO (955)  
 CITROEN NEMO Station wagon  
 FIAT 500 (312)  
 FIAT 500 C (312)  
 FIAT DOBLO (119)  
 FIAT FIORINO MPV / Space wagon (225\_)

**OE**

09115193  
 1202265  
 1202499  
 1571299  
 1637179980  
 1726349

Clamp: M8 B+  
 Flange [mm]: 64  
 Number of mounting bores: 2  
 Number of Teeth: 9  
 Number of Thread Bores: 1  
 Rated Power [kW]: 1,3  
 Rotation Direction: Clockwise rotation  
 Voltage [V]: 12

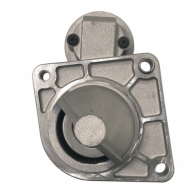
**MT-103JM**
**Starter**


ABARTH 124 Spider (348\_)  
 ABARTH 500 (312)  
 ABARTH 500C (312)  
 ABARTH PUNTO EVO (199)  
 ALFA ROMEO GIULIETTA (940)  
 ALFA ROMEO MITO (955)

**OE**

1202291  
 1202503  
 136908  
 1542468  
 1567033  
 1726802

Clamp: M8 B+  
 Flange [mm]: 64  
 Number of mounting bores: 3  
 Number of Teeth: 10  
 Number of Teeth: 8  
 Number of Teeth: 9  
 Number of Thread Bores: 1  
 Rated Power [kW]: 1  
 Rotation Direction: Clockwise rotation  
 Voltage [V]: 12

**MT-104JM**
**Starter**


FIAT PALIO (178BX)  
 FIAT PALIO Weekend (178DX)  
 FIAT PUNTO (188)  
 FIAT SEICENTO (187)  
 FIAT SIENA (178\_)  
 LANCIA Y (840A)

**OE**

136910  
 2506910  
 46429594  
 46473785  
 46518059  
 46548653

Clamp: M8, Pin "50" M6  
 Flange [mm]: 64  
 Number of mounting bores: 3  
 Number of Teeth: 10  
 Number of Teeth: 8  
 Number of Teeth: 9  
 Number of Thread Bores: 1  
 Rated Power [kW]: 0,8  
 Rotation Direction: Clockwise rotation  
 Voltage [V]: 12

**MT-105JM**
**Starter**


DACIA LOGAN (LS\_)  
 DACIA LOGAN II  
 DACIA LOGAN MCV (KS\_)  
 DACIA LOGAN MCV II  
 DACIA LOGAN Pick-up (US\_)  
 DACIA SANDERO

**OE**

2330000Q0F  
 2330000Q1H  
 2330000Q1M  
 2330000Q2C  
 2330000Q6L  
 2330000QA0

Clamp: M8 B+, Pin "50" Plug  
 Flange [mm]: 63  
 Number of mounting bores: 3  
 Number of Teeth: 10  
 Number of Teeth: 12  
 Number of Teeth: 13  
 Number of Thread Bores: 3  
 Rated Power [kW]: 1,4  
 Rotation Direction: Clockwise rotation  
 Voltage [V]: 12

## Electrics

### MT-106JM

#### Starter



IVECO MASSIF Pick-up  
IVECO MASSIF Station Wagon

#### OE

1516689R  
2994100  
2995990  
2997002  
42498717  
500059592

Clamp: M8, Pin "50" M6  
Flange [mm]: 81,5  
Number of mounting bores: 3  
Number of Teeth: 9  
Number of Thread Bores: 3  
Rated Power [kW]: 2,3  
Rotation Direction: Clockwise rotation  
Voltage [V]: 12

### MT-107JM

#### Starter



FORD FIESTA V (JH\_, JD\_)  
FORD FIESTA VI  
FORD FUSION (JU\_)  
MAZDA 2 (DY)

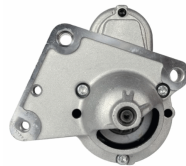
#### OE

1140757  
1144505  
1350459  
1366195  
1368974  
1483817

Clamp: M8, Pin "50" M6  
Number of mounting bores: 3  
Number of Teeth: 12  
Number of Thread Bores: 2  
Rated Power [kW]: 1,4  
Rotation Direction: Clockwise rotation  
Voltage [V]: 12

### MT-108JM

#### Starter



CITROEN BERLINGO (B9)  
CITROEN BERLINGO (K9)  
CITROEN BERLINGO (MF)  
CITROEN C-ELYSEE  
CITROEN C1 (PM\_, PN\_)  
CITROEN C2 (JM\_)

#### OE

1213257  
1638115880  
28100YV010  
28100YV011  
3640319  
5802A2

Clamp: Pin "30" M8 B+  
Clamp: Pin "50" M5  
Number of mounting bores: 4  
Number of Teeth: 11  
Number of Teeth: 12  
Number of Thread Bores: 2  
Rated Power [kW]: 1,4  
Rotation Direction: Clockwise rotation  
Voltage [V]: 12

### MT-109JM

#### Starter



CITROEN JUMPER Autobus  
CITROEN JUMPER Autobus (230P)  
CITROEN JUMPER Autobus (244, Z\_)  
CITROEN JUMPER Furgonato  
CITROEN JUMPER Furgonato (230L)  
CITROEN JUMPER Furgonato (244)

#### OE

130019808  
1300198080  
131955508  
1329201080  
1349920080  
1516685R

Clamp: M8, Pin "50" M6  
Flange [mm]: 81,5  
Number of mounting bores: 3  
Number of Teeth: 9  
Number of Thread Bores: 3  
Rated Power [kW]: 2,5  
Rotation Direction: Clockwise rotation  
Voltage [V]: 12

### MT-110JM

#### Starter



CITROEN JUMPER Autobus (230P)  
CITROEN JUMPER Autobus (244, Z\_)  
CITROEN JUMPER Furgonato (230L)  
CITROEN JUMPER Furgonato (244)  
CITROEN JUMPER Pianale piatto/Telaio (230)  
CITROEN JUMPER Pianale piatto/Telaio (244)

#### OE

1319555080  
1331329080  
134705808  
1347058080  
134705880  
1524014R

Clamp: M8  
Flange [mm]: 82  
Number of mounting bores: 3  
Number of Teeth: 9  
Number of Thread Bores: 3  
Rated Power [kW]: 2,5  
Rotation Direction: Clockwise rotation  
Voltage [V]: 12

**Electrics**
**MT-111JM**
**Starter**


CITROEN BERLINGO (MF)  
 CITROEN BX (XB-\_)  
 CITROEN BX Break (XB-\_)  
 CITROEN C-CROSSER (EP-)  
 CITROEN C15 Station wagon  
 CITROEN C4 Coupé (LA-)

**OE**

1320921080  
 1332419080  
 1502453001E  
 151412580  
 1516680R  
 1516741R

Clamp: Pin "30" M8 B+  
 Clamp: Pin "50" M5  
 Number of mounting bores: 3  
 Number of Teeth: 11  
 Number of Thread Bores: 2  
 Rated Power [kW]: 1,9  
 Rotation Direction: Clockwise rotation  
 Voltage [V]: 12

**MT-112JM**
**Starter**


CITROEN BERLINGO (MF)  
 CITROEN BX (XB-\_)  
 CITROEN BX Break (XB-\_)  
 CITROEN C-CROSSER (EP-)  
 CITROEN C15 Station wagon  
 CITROEN C4 Coupé (LA-)

**OE**

1005831356  
 1319121080  
 1342792080  
 1516776R  
 1516779R  
 1810A101

Clamp: M8, Pin "50" M5  
 Flange [mm]: 66  
 Number of mounting bores: 3  
 Number of Teeth: 10  
 Number of Teeth: 11  
 Number of Teeth: 12  
 Number of Teeth: 13  
 Number of Thread Bores: 3  
 Rated Power [kW]: 1,4  
 Rotation Direction: Clockwise rotation  
 Voltage [V]: 12

**MT-113JM**
**Starter**


MERCEDES-BENZ CLASSE C (W202)  
 MERCEDES-BENZ CLASSE C (W203)  
 MERCEDES-BENZ CLASSE C Coupe (CL203)  
 MERCEDES-BENZ CLASSE C Station wagon (S202)  
 MERCEDES-BENZ CLASSE C T-Model (S203)

**OE**

0031515001  
 003151500180  
 0041512101  
 0041513001  
 0041513901  
 0041514501

Clamp: M8  
 Flange [mm]: 82,5  
 Number of mounting bores: 2  
 Number of Teeth: 10  
 Number of Thread Bores: 2  
 Rated Power [kW]: 2  
 Rotation Direction: Clockwise rotation  
 Voltage [V]: 12

**MT-114JM**
**Starter**


FORD FIESTA IV (JA-, JB-)  
 FORD FOCUS (DAW, DBW)  
 FORD FOCUS Station wagon (DNW)  
 FORD FOCUS Tre volumi (DFW)  
 FORD PUMA (EC-)  
 MAZDA 121 III (JASM, JBMS)

**OE**

0018882  
 1004565  
 1004566  
 1011330  
 1011331  
 1018882

Clamp: Pin "50" M6  
 Flange [mm]: 76  
 Number of mounting bores: 3  
 Number of Teeth: 10  
 Number of Thread Bores: 3  
 Rated Power [kW]: 1,1  
 Rotation Direction: Clockwise rotation  
 Voltage [V]: 12

**MT-115JM**
**Starter**


CITROEN AX (ZA-)  
 CITROEN BERLINGO (B9)  
 CITROEN BERLINGO (MF)  
 CITROEN C-ELYSEE  
 CITROEN C2 (JM-)  
 CITROEN C3 I (FC-)

**OE**

580200000000  
 5802CR  
 5802E9  
 5802ER  
 5802F3  
 5802Q3

Clamp: M8, Pin "50" M5  
 Number of mounting bores: 3  
 Number of Teeth: 9  
 Number of Thread Bores: 1  
 Rated Power [kW]: 0,9  
 Rotation Direction: Clockwise rotation  
 Voltage [V]: 12

## Electrics

### MT-116JM

#### Starter



ALFA ROMEO 159 (939)  
ALFA ROMEO 159 Sportwagon (939)  
ALFA ROMEO BRERA  
ALFA ROMEO SPIDER (939)  
CHRYSLER DELTA  
FIAT BRAVO II (198)

#### OE

0001Y03631  
00K68080459AA  
3110055L00  
3110055L00000  
3110055L01  
31100T55L00

Clamp: M8 B+, Pin "50" M6  
Flange [mm]: 76  
Number of mounting bores: 3  
Number of Teeth: 10  
Number of Teeth: 11  
Number of Thread Bores: 0  
Rated Power [kW]: 1,4  
Rotation Direction: Clockwise rotation  
Voltage [V]: 12

### MT-117JM

#### Starter



FIAT PALIO (178BX)  
FIAT PALIO Weekend (178DX)  
FIAT PANDA (141A\_)  
FIAT PUNTO (188)  
FIAT SEICENTO (187)  
FIAT SIENA (178\_)

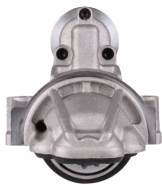
#### OE

46432262  
46465475  
46758241  
46763530  
46765839  
46796553

Clamp: M8, Pin "50" M6  
Flange [mm]: 64  
Number of mounting bores: 3  
Number of Teeth: 9  
Number of Thread Bores: 2  
Rated Power [kW]: 0,8  
Rotation Direction: Clockwise rotation  
Voltage [V]: 12

### MT-118JM

#### Starter



LAND ROVER DEFENDER Cabrio (LD)  
LAND ROVER DEFENDER Pick-up (LD\_)  
LAND ROVER DEFENDER Station Wagon (LD)

#### OE

1372739  
1375378  
1385378  
1574338  
1606413580  
1669558

Clamp: Pin "30" M8 B+  
Clamp: Pin "50" M6  
Flange [mm]: 89  
Number of mounting bores: 2  
Number of Teeth: 12  
Number of Thread Bores: 0  
Rated Power [kW]: 2  
Rotation Direction: Clockwise rotation  
Voltage [V]: 12

### MT-119JM

#### Starter



FORD C-MAX (DM2)  
FORD C-MAX II  
FORD FOCUS C-MAX  
FORD FOCUS II (DA\_)  
FORD FOCUS II Station wagon (DA\_)  
FORD FOCUS II Tre volumi (DA\_)

#### OE

1229427  
1233234  
1254222  
1368970  
1469712  
1707507

Clamp: Pin "30" M8 B+  
Clamp: Pin "50" M6  
Number of mounting bores: 3  
Number of Teeth: 11  
Number of Thread Bores: 2  
Rated Power [kW]: 1,2  
Rotation Direction: Clockwise rotation  
Voltage [V]: 12

### MT-120JM

#### Starter



AUDI A1 (8X1, 8XF)  
AUDI A1 Sportback (8XA, 8XK)  
AUDI A3 (8P1)  
AUDI A3 Cabriolet (8P7)  
AUDI A3 Sportback (8PA)  
AUDI Q3 (8U)

#### OE

02M911023N  
02M911023NX  
02M911023P  
02M911023PX  
02M911024  
02M911024A

Clamp: Pin "50" Plug  
Flange [mm]: 76  
Number of mounting bores: 2  
Number of Teeth: 11  
Number of Teeth: 12  
Number of Thread Bores: 0  
Rated Power [kW]: 2  
Rotation Direction: Anti-clockwise rotation  
Voltage [V]: 12

## Electrics

### MT-121JM

#### Starter



FORD ESCORT CLASSIC (AAL, ABL)  
 FORD ESCORT V (GAL)  
 FORD ESCORT V Station wagon (GAL, AVL)  
 FORD ESCORT VI (GAL)  
 FORD ESCORT VI Station wagon (GAL)  
 FORD ESCORT VI Tre volumi (GAL)

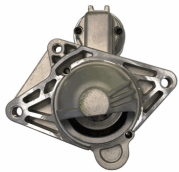
#### OE

1008813  
 1008835  
 1027300  
 1058429  
 1061267  
 1061627

Clamp: M8, Pin "50" M6  
 Flange [mm]: 76  
 Number of mounting bores: 3  
 Number of Teeth: 10  
 Number of Thread Bores: 3  
 Rated Power [kW]: 2,2  
 Rotation Direction: Clockwise rotation  
 Voltage [V]: 12

### MT-122JM

#### Starter



MERCEDES-BENZ CLASSE X (470)  
 NISSAN NAVARA Pick-up (D23)  
 NISSAN QASHQAI / QASHQAI +2 (J10, JJ10)  
 NISSAN X-TRAIL (T31)  
 RENAULT ALASKAN  
 RENAULT ESPACE IV (JK0/1\_)

#### OE

1202193  
 1202204  
 1202395  
 2330000Q0A  
 2330000Q0D  
 2330000Q1E

Clamp: Pin "30" M8 B+  
 Clamp: Pin "50" M5  
 Flange [mm]: 76  
 Number of mounting bores: 3  
 Number of Teeth: 10  
 Number of Teeth: 11  
 Number of Thread Bores: 0  
 Rated Power [kW]: 2,2  
 Rotation Direction: Clockwise rotation  
 Voltage [V]: 12

### MT-123JM

#### Starter



HYUNDAI GALLOPER II (JK-01)  
 HYUNDAI TERRACAN (HP)  
 MITSUBISHI GALANT VI (EA\_)  
 MITSUBISHI GALANT VI Station wagon (EA\_)  
 MITSUBISHI L 200 (K7\_T, K6\_T)  
 MITSUBISHI LANCER V (CB/D\_A)

#### OE

23300FY500  
 3610042250  
 3610042350  
 3610042450  
 M002T84170  
 M002T84171

Clamp: M10  
 Flange [mm]: 77  
 Number of mounting bores: 2  
 Number of Teeth: 12  
 Number of Thread Bores: 2  
 Rated Power [kW]: 2,2  
 Rotation Direction: Clockwise rotation  
 Voltage [V]: 12

### MT-124JM

#### Starter



CITROEN C1 (PM\_, PN\_)  
 CITROEN C1 II  
 PEUGEOT 107  
 PEUGEOT 108  
 TOYOTA AYGO (PAB4\_, KGB4\_)  
 TOYOTA AYGO (WNB1\_, KGB1\_)

#### OE

1612092980  
 1612350580  
 281000Q012  
 281000Q012D  
 281000Q021  
 281000Q030

Clamp: Pin "30" M8 B+  
 Clamp: Pin "50" M5  
 Flange [mm]: 74  
 Number of mounting bores: 2  
 Number of Teeth: 8  
 Number of Thread Bores: 1  
 Rated Power [kW]: 1,1  
 Rotation Direction: Clockwise rotation  
 Voltage [V]: 12

### MT-125JM

#### Starter



FIAT CINQUECENTO (170)  
 FIAT PANDA (141A\_)  
 FIAT SEICENTO (187)  
 FIAT UNO (146A/E)  
 LANCIA A 112  
 SEAT FURA (025A)

#### OE

0003914191  
 0003974104  
 3914191  
 3915113  
 4229113  
 4229114

Clamp: M8  
 Flange [mm]: 62  
 Number of mounting bores: 3  
 Number of Teeth: 9  
 Number of Thread Bores: 3  
 Rated Power [kW]: 1,2  
 Rotation Direction: Clockwise rotation  
 Voltage [V]: 12

**Electrics**
**MT-126JM**
**Starter**


CITROEN BERLINGO (B9)  
 CITROEN C1 (PM\_, PN\_)  
 CITROEN C2 (JM\_)  
 CITROEN C3 I (FC\_)  
 CITROEN C3 II  
 CITROEN C3 III (SX)

**OE**

28100YV020  
 3647959  
 5645100680  
 5802AA  
 5802EG  
 5802Z8

Clamp: M8  
 Number of mounting bores: 3  
 Number of Teeth: 12  
 Number of Thread Bores: 2  
 Rated Power [kW]: 1,5  
 Rotation Direction: Clockwise rotation  
 Voltage [V]: 12

**MT-127JM**
**Starter**


AUDI A3 (8P1)  
 AUDI A3 Cabriolet (8P7)  
 AUDI A3 Sportback (8PA)  
 SEAT ALTEA (5P1)  
 SEAT ALTEA XL (5P5, 5P8)  
 SEAT CORDOBA (6L2)

**OE**

02Z911023F  
 02Z911023FX  
 02Z911023H  
 02Z911023HX  
 02Z911024J  
 2Z911023F

Clamp: Pin "30" M8 B+  
 Clamp: Pin "50" Plug  
 Flange [mm]: 76  
 Number of mounting bores: 3  
 Number of Teeth: 10  
 Number of Thread Bores: 0  
 Rated Power [kW]: 2  
 Rotation Direction: Anti-clockwise rotation  
 Voltage [V]: 12

**MT-128JM**
**Starter**


CHEVROLET CORSA Pick-up  
 CHEVROLET CORSA Station wagon  
 CHEVROLET CORSA Tre volumi  
 CHEVROLET TRAX  
 HONDA CIVIC VII Hatchback (EU, EP, EV)  
 OPEL ASTRA CLASSIC (L48)

**OE**

1202591  
 136934  
 2506934  
 31200PLZD00  
 6202000  
 6202043

Clamp: Pin "30" M8 B+  
 Clamp: Pin "50" M4  
 Flange [mm]: 78  
 Number of mounting bores: 2  
 Number of Teeth: 13  
 Number of Thread Bores: 1  
 Rated Power [kW]: 1,4  
 Rotation Direction: Clockwise rotation  
 Voltage [V]: 12

**MT-129JM**
**Starter**


FORD C-MAX (DM2)  
 FORD FOCUS C-MAX  
 FORD FOCUS II (DA\_)  
 FORD FOCUS II Cabriolet  
 FORD FOCUS II Station wagon (DA\_)  
 FORD FOCUS II Tre volumi (DA\_)

**OE**

1427763  
 1476606  
 1529431  
 1904993  
 4M5T11000FA  
 6G9N11000GA

Clamp: M8 B+  
 Flange [mm]: 63  
 Number of mounting bores: 3  
 Number of Teeth: 11  
 Number of Thread Bores: 3  
 Rated Power [kW]: 2,2  
 Rotation Direction: Clockwise rotation  
 Voltage [V]: 12

**MT-130JM**
**Starter**


BMW 02 (E10)  
 BMW 02 Cabriolet (E10)  
 BMW 02 Touring (E6)  
 BMW 1500-2000 (115, 116, 118, 121)  
 BMW 1600 GT Coupe  
 BMW 2000-3.2 Coupe (E9)

**OE**

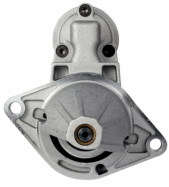
1005821194  
 12411308543  
 12411312104  
 12411312130  
 1312104  
 1312130

Clamp: M8, Pin "50" M6  
 Flange [mm]: 76  
 Number of mounting bores: 2  
 Number of Teeth: 9  
 Number of Thread Bores: 0  
 Rated Power [kW]: 1,7  
 Rotation Direction: Clockwise rotation  
 Voltage [V]: 12

## Electrics

### MT-131JM

#### Starter



DAEWOO LACETTI 2 volumi /Coda spiovente (KLAN)  
FIAT STILO (192)  
FIAT STILO Multi Wagon (192)  
OPEL AGILA (A) (H00)  
OPEL COMBO Tour

**OE**  
55351508  
55351608

Clamp: M8, Pin "50" M6  
Flange [mm]: 68  
Number of mounting bores: 2  
Number of Teeth: 9  
Number of Thread Bores: 0  
Rated Power [kW]: 1,1  
Rotation Direction: Clockwise rotation  
Voltage [V]: 12

### MT-132JM

#### Starter



HYUNDAI GALLOPER I  
HYUNDAI GALLOPER II (JK-01)  
HYUNDAI TERRACAN (HP)  
MITSUBISHI GALANT II Station Wagon (A16\_V)  
MITSUBISHI GALANT IV (A16\_)  
MITSUBISHI GALANT V (E5\_A, E7\_A, E8\_A)

**OE**  
1516954R  
3610042050  
3610047600  
3610047650  
HK988300  
HQ808670

Clamp: M8 B+  
Flange [mm]: 77  
Number of mounting bores: 2  
Number of Teeth: 13  
Number of Thread Bores: 2  
Rated Power [kW]: 2,2  
Rotation Direction: Clockwise rotation  
Voltage [V]: 12

### MT-133JM

#### Starter



CARBODIES TX1  
FORD MAVERICK (UDS, UNS)  
NISSAN NAVARA (D21)  
NISSAN NAVARA (D22)  
NISSAN PATHFINDER (R50)  
NISSAN PICK UP (D21)

**OE**  
1516934R  
2330002N00  
2330010T01  
2330010T02  
233001W400  
233001W40A

Clamp: M8  
Flange [mm]: 95  
Number of mounting bores: 2  
Number of Teeth: 9  
Number of Thread Bores: 0  
Rated Power [kW]: 2,5  
Rotation Direction: Clockwise rotation  
Voltage [V]: 12

### MT-134JM

#### Starter



FIAT DOBLO (119)  
LANCIA YPSILON (843)  
OPEL AGILA (A) (H00)  
OPEL AGILA (B) (H08)  
OPEL ASTRA CLASSIC (L48)  
OPEL ASTRA H (L48)

**OE**  
3110084EC0  
3110085E00  
31100M86J01  
33353237  
55217673  
55353237

Clamp: Pin "30" M8 B+  
Clamp: Pin "50" M6  
Flange [mm]: 64  
Number of mounting bores: 2  
Number of Teeth: 8  
Number of Teeth: 9  
Number of Thread Bores: 1  
Rated Power [kW]: 1,1  
Rotation Direction: Clockwise rotation  
Voltage [V]: 12

### MT-135JM

#### Starter



TOYOTA YARIS (SCP1\_, NLP1\_, NCP1\_)

**OE**  
2280009540  
281000J010  
281000J020  
281000J030  
281000J031  
281000J050

Clamp: Pin "50" Plug  
Flange [mm]: 74  
Number of mounting bores: 2  
Number of Teeth: 8  
Number of Thread Bores: 1  
Rated Power [kW]: 1,2  
Rotation Direction: Clockwise rotation  
Voltage [V]: 12

**Electrics**
**MT-136JM**
**Starter**


IVECO DAILY I Autobus  
 IVECO DAILY I Cassone / Furgonato / Promiscuo  
 IVECO DAILY I Pianale piatto/Telaio  
 IVECO DAILY I Ribaltabile  
 IVECO DAILY II Cassone / Furgonato / Promiscuo

**OE**  
 004719664  
 106055  
 1516663R  
 1516714R  
 1516792R  
 2995140

Clamp: M8  
 Flange [mm]: 110  
 Number of mounting bores: 3  
 Number of Teeth: 9  
 Number of Thread Bores: 1  
 Rated Power [kW]: 2,2  
 Rotation Direction: Clockwise rotation  
 Voltage [V]: 12

**MT-137JM**
**Starter**


AUTOBIANCHI Y10  
 FIAT PANDA (141A\_)  
 FIAT TIPO (160)  
 FIAT UNO (146A/E)  
 LANCIA Y10 (156)

**OE**  
 46231510  
 46402984  
 5999906  
 7539303  
 7612952  
 7621040

Clamp: M8  
 Flange [mm]: 64  
 Number of mounting bores: 3  
 Number of Teeth: 9  
 Number of Thread Bores: 1  
 Rated Power [kW]: 0,8  
 Rotation Direction: Clockwise rotation  
 Voltage [V]: 12

**MT-138JM**
**Starter**


CHEVROLET AVEO 2 volumi /Coda spiovente (T200)  
 CHEVROLET AVEO 2 volumi /Coda spiovente (T250, T255)  
 CHEVROLET AVEO Tre volumi (T200)  
 CHEVROLET AVEO Tre volumi (T250, T255)

**OE**  
 09000700  
 09000756  
 09117031  
 09130838  
 09133598  
 09163856

Clamp: M8, Pin "50" M6  
 Flange [mm]: 68  
 Number of mounting bores: 2  
 Number of Teeth: 10  
 Number of Thread Bores: 0  
 Rated Power [kW]: 1,3  
 Rotation Direction: Clockwise rotation  
 Voltage [V]: 12

**MT-139JM**
**Starter**


DACIA LOGAN (LS\_)  
 DACIA LOGAN II  
 DACIA LOGAN MCV II  
 DACIA SANDERO  
 DACIA SANDERO II  
 RENAULT CLIO Grandtour (KR0/1\_)

**OE**  
 2330000QAM  
 2330000QAY  
 5802X6  
 7700864608  
 7700865213  
 7700867838

Clamp: M8  
 Flange [mm]: 63,5  
 Number of mounting bores: 3  
 Number of Teeth: 9  
 Number of Thread Bores: 1  
 Rated Power [kW]: 0,9  
 Rotation Direction: Clockwise rotation  
 Voltage [V]: 12

**MT-140JM**
**Starter**


TOYOTA AURIS (NRE15\_, ZZE15\_, ADE15\_, ZRE15\_, NDE15\_)  
 TOYOTA YARIS (SCP9\_, NSP9\_, KSP9\_, NCP9\_, ZSP9\_)

**OE**  
 281000N010

Clamp: Pin "50" Plug  
 Flange [mm]: 74  
 Number of mounting bores: 2  
 Number of Teeth: 9  
 Number of Thread Bores: 1  
 Rated Power [kW]: 1,1  
 Rotation Direction: Clockwise rotation  
 Voltage [V]: 12

## Electrics

### MT-141JM

#### Starter



LEXUS IS II (GSE2\_, ALE2\_, USE2\_)  
 TOYOTA AURIS (NRE15\_, ZZE15\_, ADE15\_, ZRE15\_, NDE15\_)  
 TOYOTA AURIS (NZE18\_, ZRE18\_)  
 TOYOTA AURIS TOURING SPORTS (ADE18\_, ZWE18\_, ZRE18\_)

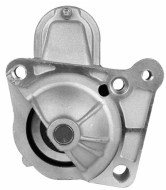
#### OE

281000G040  
 281000R010  
 281000R01084  
 281000R030  
 281000R03084  
 281000R060

Clamp: Pin "30" M8 B+  
 Clamp: Pin "50" Plug  
 Flange [mm]: 74  
 Number of mounting bores: 2  
 Number of Teeth: 9  
 Number of Thread Bores: 2  
 Rated Power [kW]: 2  
 Rotation Direction: Clockwise rotation  
 Voltage [V]: 12

### MT-142JM

#### Starter



MITSUBISHI CARISMA (DA\_)  
 MITSUBISHI CARISMA Tre volumi (DA\_)  
 MITSUBISHI SPACE STAR (DG\_A)  
 NISSAN PRIMERA (P12)  
 NISSAN PRIMERA Hatchback (P12)  
 NISSAN PRIMERA Station wagon (WP12)

#### OE

1810A048  
 2330000Q0E  
 2330000QAC  
 2330000QAE  
 23300AW300  
 23300AW302

Clamp: Pin "30" M8 B+  
 Clamp: Pin "50" M5  
 Number of mounting bores: 4  
 Number of Teeth: 11  
 Number of Thread Bores: 3  
 Rated Power [kW]: 2,1  
 Rotation Direction: Clockwise rotation  
 Voltage [V]: 12

### MT-143JM

#### Starter



MERCEDES-BENZ CLASSE A (W168)  
 MERCEDES-BENZ Vaneo (414)

#### OE

0051511601  
 005151160180  
 0051517401  
 005151740180  
 A0051511601  
 A005151160180

Clamp: M8, Pin "50" M6  
 Flange [mm]: 70  
 Number of mounting bores: 2  
 Number of Teeth: 10  
 Number of Thread Bores: 0  
 Rated Power [kW]: 1,7  
 Rotation Direction: Clockwise rotation  
 Voltage [V]: 12

### MT-144JM

#### Starter



OPEL ASTRA GTC J  
 OPEL ASTRA J  
 OPEL ASTRA J Sports Tourer  
 OPEL ASTRA J Tre volumi  
 OPEL CORSA D  
 OPEL MERIVA B

#### OE

1202110  
 1202281  
 1202421  
 55566800  
 55568572  
 95520115

Clamp: Pin "50" M6  
 Flange [mm]: 68  
 Number of mounting bores: 2  
 Number of Teeth: 9  
 Number of Thread Bores: 0  
 Rated Power [kW]: 1,1  
 Rotation Direction: Clockwise rotation  
 Voltage [V]: 12

### MT-145JM

#### Starter



CITROEN BERLINGO (B9)  
 CITROEN BERLINGO (K9)  
 CITROEN BERLINGO (MF)  
 CITROEN C-ELYSEE  
 CITROEN C2 (JM\_)  
 CITROEN C3 AIRCROSS II

#### OE

12417794971  
 12417805098  
 1638116880  
 3110069K00  
 3640318  
 5802AE

Clamp: Pin "50" M5  
 Number of mounting bores: 4  
 Number of Teeth: 11  
 Number of Thread Bores: 2  
 Rated Power [kW]: 2,2  
 Rotation Direction: Clockwise rotation  
 Voltage [V]: 12

**Electrics**
**MT-146JM**
**Starter**


AUDI A2 (8Z0)  
 AUDI A3 (8L1)  
 FORD GALAXY (WGR)  
 SEAT ALHAMBRA (7V8, 7V9)  
 SEAT AROSA (6H)  
 SEAT CORDOBA (6K1, 6K2)

**OE**

02A911023G  
 02A911023GX  
 02A911023J  
 02A911023JX  
 02A911023R  
 02A911023RX

Clamp: M8  
 Flange [mm]: 76  
 Number of mounting bores: 2  
 Number of Teeth: 10  
 Number of Thread Bores: 0  
 Rated Power [kW]: 1,8  
 Rotation Direction: Anti-clockwise rotation  
 Voltage [V]: 12

**MT-147JM**
**Starter**


SUZUKI JIMNY (FJ)  
 SUZUKI JIMNY Fuoristrada aperto (SN)  
 SUZUKI SAMURAI (SJ)  
 SUZUKI SAMURAI Fuoristrada aperto (SJ)  
 SUZUKI SJ 413  
 SUZUKI VITARA (ET, TA)

**OE**

1A5118400  
 3100083021  
 3110060A10  
 3110060A10000  
 3110060A11  
 3110060A12

Clamp: M8  
 Flange [mm]: 66  
 Number of mounting bores: 2  
 Number of Teeth: 8  
 Number of Teeth: 9  
 Number of Thread Bores: 0  
 Rated Power [kW]: 0,9  
 Rotation Direction: Clockwise rotation  
 Voltage [V]: 12

**MT-148JM**
**Starter**


AUDI 80 (89, 89Q, 8A, B3)  
 AUDI 80 (8C, B4)  
 AUDI 80 Avant (8C, B4)  
 AUDI 90 (89, 89Q, 8A, B3)  
 AUDI A4 (8D2, B5)  
 AUDI A4 (8E2, B6)

**OE**

068911023P  
 068911023R  
 068911023RX  
 068911023S  
 068911023SX  
 068911024B

Clamp: M8  
 Clamp: Pin "50" 6.3mm Spade  
 Flange [mm]: 82,5  
 Number of mounting bores: 2  
 Number of Teeth: 10  
 Number of Teeth: 9  
 Number of Thread Bores: 2  
 Rated Power [kW]: 1,7  
 Rotation Direction: Clockwise rotation  
 Voltage [V]: 12

**MT-149JM**
**Starter**


MERCEDES-BENZ CLASSE A (W168)  
 MERCEDES-BENZ CLASSE A (W169)  
 MERCEDES-BENZ CLASSE B (W245)  
 MERCEDES-BENZ Vaneo (414)

**OE**

0041518501  
 004151850180  
 0051212101  
 0051511101  
 005151110180  
 0051512101

Clamp: Pin "50" M6  
 Flange [mm]: 70  
 Number of mounting bores: 2  
 Number of Teeth: 10  
 Number of Teeth: 9  
 Number of Thread Bores: 0  
 Rated Power [kW]: 1,3  
 Rotation Direction: Clockwise rotation  
 Voltage [V]: 12

**MT-150JM**
**Starter**


FORD MONDEO III (B5Y)  
 FORD MONDEO III Station wagon (BWY)  
 FORD MONDEO III Tre volumi (B4Y)  
 JAGUAR X-TYPE (CF1)  
 JAGUAR X-TYPE Estate  
 LTI TX

**OE**

1096338  
 1120215  
 1140110  
 1151641  
 1202166  
 1214371

Clamp: M8, Pin "50" M6  
 Number of mounting bores: 4  
 Number of Teeth: 19  
 Number of Thread Bores: 0  
 Rated Power [kW]: 2,1  
 Rotation Direction: Clockwise rotation  
 Voltage [V]: 12

**Electrics**
**MT-151JM**
**Starter**


ALFA ROMEO MITO (955)  
 CHRYSLER YPSILON  
 CITROEN NEMO Station wagon  
 FIAT 500 (312)  
 FIAT 500 C (312)  
 FIAT 500L

**OE**

1202203  
 1202266  
 1202508  
 1612794380  
 1616323380  
 1723350

Clamp: M8 B+  
 Flange [mm]: 64  
 Number of mounting bores: 2  
 Number of Teeth: 10  
 Number of Thread Bores: 1  
 Rated Power [kW]: 1,4  
 Rotation Direction: Clockwise rotation  
 Voltage [V]: 12

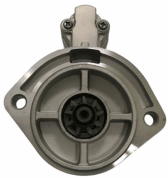
**MT-152JM**
**Starter**


DACIA SOLENZA  
 DACIA SUPERNOVA  
 MAZDA 2 (DE)  
 RENAULT 11 (B/C37\_)  
 RENAULT 19 I (B/C53\_)  
 RENAULT 19 I Cabriolet (D53\_)

**OE**

0000431120  
 0000434120  
 1059564  
 1516729R  
 1516807R  
 18213M68KA000

Clamp: M8  
 Flange [mm]: 66  
 Number of mounting bores: 4  
 Number of Teeth: 11  
 Number of Teeth: 9  
 Number of Thread Bores: 4  
 Rated Power [kW]: 1,4  
 Rotation Direction: Clockwise rotation  
 Voltage [V]: 12

**MT-153JM**
**Starter**


NISSAN CABSTAR Pick-up  
 NISSAN TRADE Autobus  
 NISSAN TRADE Furgonato  
 NISSAN TRADE Pianale piatto/Telaio

**OE**

136914  
 233000T600  
 233001S900  
 2330054T00  
 2330090067  
 2330090069

Clamp: M8  
 Flange [mm]: 95  
 Number of mounting bores: 2  
 Number of Teeth: 9  
 Number of Thread Bores: 0  
 Rated Power [kW]: 2,2  
 Rotation Direction: Clockwise rotation  
 Voltage [V]: 12

**MT-154JM**
**Starter**


NISSAN MICRA C+C (K12)  
 NISSAN MICRA II (K11)  
 NISSAN MICRA III (K12)  
 NISSAN NOTE (E11)

**OE**

233001F710  
 233001F715  
 233001F770  
 233001F771  
 233001F772  
 233001F772B

Clamp: M8, Pin "50" M6  
 Flange [mm]: 70  
 Number of mounting bores: 2  
 Number of Teeth: 8  
 Number of Thread Bores: 1  
 Rated Power [kW]: 1,1  
 Rotation Direction: Clockwise rotation  
 Voltage [V]: 12

**MT-155JM**
**Starter**


DACIA DOKKER  
 DACIA DUSTER  
 DACIA LODGY  
 RENAULT CAPTUR  
 RENAULT CLIO Grandtour IV  
 RENAULT CLIO IV

**OE**

2330000Q3D  
 233000557R  
 233000779R  
 233001071  
 233001071R  
 233003307R

Clamp: Pin "30" M8 B+  
 Clamp: Pin "50" M5  
 Number of mounting bores: 4  
 Number of Teeth: 11  
 Number of Thread Bores: 3  
 Rated Power [kW]: 1  
 Rotation Direction: Clockwise rotation  
 Voltage [V]: 12

**Electrics**
**MT-156JM**
**Starter**


SMART CABRIO (450)  
 SMART CITY-COUPE (450)  
 SMART CROSSBLADE (450)  
 SMART FORTWO Cabrio (450)  
 SMART FORTWO Coupé (450)  
 SMART ROADSTER (452)

**OE**  
 0003188V004  
 0003188V005  
 0003188V006  
 0003188V007  
 0003188V008  
 0003188V008000000

Clamp: M8  
 Flange [mm]: 70  
 Number of mounting bores: 3  
 Number of Teeth: 9  
 Number of Thread Bores: 2  
 Rated Power [kW]: 0,8  
 Rotation Direction: Clockwise rotation  
 Voltage [V]: 12

**MT-157JM**
**Starter**


MERCEDES-BENZ CLASSE C (W204)  
 MERCEDES-BENZ CLASSE C Coupé (C204)  
 MERCEDES-BENZ CLASSE C T-Model (S204)  
 MERCEDES-BENZ CLASSE E (W212)  
 MERCEDES-BENZ CLASSE E Cabriolet (A207)  
 MERCEDES-BENZ CLASSE E Coupé (C207)

**OE**  
 0009060126  
 000906012680  
 0061514501  
 006151450180  
 6519060026  
 651906002680

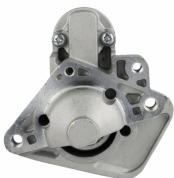
Clamp: M8 B+  
 Clamp: Pin "50" M6  
 Flange [mm]: 70  
 Number of mounting bores: 2  
 Number of Teeth: 12  
 Number of Thread Bores: 2  
 Rated Power [kW]: 1,7  
 Rotation Direction: Clockwise rotation  
 Voltage [V]: 12

**MT-158JM**
**Starter**


FIAT FIORINO Pick up (146)  
 FIAT PALIO (178BX)  
 FIAT PALIO Weekend (178DX)  
 FIAT PUNTO (176)  
 FIAT SIENA (178\_)  
 FIAT STRADA Pick-up (178E)

**OE**  
 46430721  
 46439669  
 4643970  
 46439700  
 46440079  
 46446291

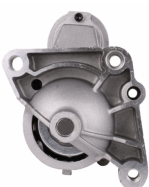
Clamp: Pin "50" M6  
 Flange [mm]: 82  
 Number of mounting bores: 3  
 Number of Teeth: 9  
 Number of Thread Bores: 3  
 Rated Power [kW]: 1,7  
 Rotation Direction: Clockwise rotation  
 Voltage [V]: 12

**MT-159JM**
**Starter**


DACIA DOKKER  
 DACIA DUSTER  
 DACIA LODGY  
 DACIA LOGAN II  
 DACIA LOGAN MCV II  
 DACIA SANDERO II

**OE**  
 2330000Q2H  
 233000379R  
 233004868C  
 233004868R  
 233007689R  
 233009323R

Clamp: M8 B+  
 Clamp: Pin "50" Plug  
 Flange [mm]: 64  
 Number of mounting bores: 2  
 Number of Teeth: 12  
 Number of Teeth: 13  
 Number of Thread Bores: 2  
 Rated Power [kW]: 1,7  
 Rotation Direction: Clockwise rotation  
 Voltage [V]: 12

**MT-160JM**
**Starter**


RENAULT AVANTIME (DE0\_)  
 RENAULT ESPACE III (JE0\_)  
 RENAULT ESPACE IV (JK0/1\_)  
 RENAULT LAGUNA II (BG0/1\_)  
 RENAULT LAGUNA II Grandtour (KG0/1\_)  
 RENAULT VEL SATIS (BJ0\_)

**OE**  
 1202206  
 1202208  
 2330000Q0B  
 2330000Q0C  
 2330000QAF  
 2330000QAG

Clamp: M8  
 Number of mounting bores: 4  
 Number of Teeth: 10  
 Number of Thread Bores: 3  
 Rated Power [kW]: 2  
 Rotation Direction: Clockwise rotation  
 Voltage [V]: 12

**Electrics**
**MT-161JM**
**Starter**


PIAGGIO APE (MP) VESPACAR  
 PIAGGIO APE TM Furgonato  
 PIAGGIO APE TM Pianale piatto/Telaio

**OE**

157715  
 803499  
 8034993  
 834692

Number of mounting bores: 2  
 Number of Thread Bores: 0  
 Rated Power [kW]: 0,8  
 Voltage [V]: 12

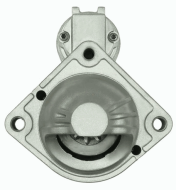
**MT-162JM**
**Starter**


FORD C-MAX II  
 FORD FOCUS II (DA\_)  
 FORD FOCUS II Station wagon (DA\_)  
 FORD FOCUS II Tre volumi (DA\_)  
 FORD FOCUS III  
 FORD FOCUS III Tre volumi

**OE**

1687623  
 1715211  
 1778016  
 1893556  
 1898356  
 2033247

Clamp: Pin "30" M8 B+  
 Clamp: Pin "50" M6  
 Number of mounting bores: 3  
 Number of Teeth: 11  
 Number of Thread Bores: 0  
 Rated Power [kW]: 2,3  
 Rotation Direction: Clockwise rotation  
 Voltage [V]: 12

**MT-163JM**
**Starter**


BMW 1 (E87)  
 BMW 3 (E46)  
 BMW 3 Cabriolet (E46)  
 BMW 3 Compact (E46)  
 BMW 3 Coupe (E46)  
 BMW 3 Touring (E46)

**OE**

12417787354  
 12417787356  
 7787354  
 7787356

Clamp: 30H M5  
 Clamp: Pin 50 M6  
 Flange [mm]: 74  
 Number of mounting bores: 2  
 Number of Teeth: 10  
 Number of Thread Bores: 2  
 Rated Power [kW]: 1,6  
 Rotation Direction: Clockwise rotation  
 Voltage [V]: 12

**MT-164JM**
**Starter**


CHEVROLET MATIZ (M200, M250)  
 CHEVROLET SPARK  
 DAEWOO MATIZ  
 DAEWOO MATIZ (KLYA)  
 DAEWOO TICO (KLY3)  
 SUZUKI WAGON R+ (EM)

**OE**

3110070B20  
 3110075F0  
 3110075F00  
 3110075F01  
 3110075F01000  
 3110075F02

Clamp: M8  
 Flange [mm]: 75  
 Number of mounting bores: 2  
 Number of Teeth: 8  
 Number of Thread Bores: 2  
 Rated Power [kW]: 1  
 Rotation Direction: Clockwise rotation  
 Voltage [V]: 12

**MT-165JM**
**Starter**


SUBARU TREZIA  
 TOYOTA AURIS (NRE15\_, ZZE15\_, ADE15\_,  
 ZRE15\_, NDE15\_)  
 TOYOTA AURIS (NZE18\_, ZRE18\_)  
 TOYOTA AURIS TOURING SPORTS (ADE18\_,  
 ZWE18\_, ZRE18\_)

**OE**

281000N040  
 281000N04084  
 281000N060  
 2810033090  
 2810033110

Clamp: Pin "50" Plug  
 Flange [mm]: 74  
 Number of mounting bores: 2  
 Number of Teeth: 9  
 Number of Thread Bores: 1  
 Rated Power [kW]: 1,6  
 Rotation Direction: Clockwise rotation  
 Voltage [V]: 12

**Electrics**
**MT-166JM**
**Starter**


AUDI A6 (4B2, C5)  
 DAEWOO MATIZ (KLYA)  
 JAGUAR XJ (X350, X358)  
 NEW HOLLAND TN-A  
 TOYOTA LAND CRUISER (KDJ12\_, GRJ12\_)

**OE**  
 580 144 18 16  
 5801441816

Clamp: M8 B+  
 Flange [mm]: 110  
 Number of mounting bores: 3  
 Number of Teeth: 9  
 Number of Thread Bores: 0  
 Rated Power [kW]: 2,6  
 Rotation Direction: Clockwise rotation  
 Voltage [V]: 12

**MT-167JM**
**Starter**


TOYOTA AVENSIS VERSO (\_CLM2\_, \_ACM2\_)  
 TOYOTA CARINA E (\_T19\_)  
 TOYOTA CARINA E Sportswagon (\_T19\_)  
 TOYOTA CARINA E Tre volumi (\_T19\_)  
 TOYOTA COROLLA (\_E11\_)  
 TOYOTA COROLLA Compact (\_E11\_)

**OE**  
 2810064140  
 2810064310  
 2810064430  
 TT15639

Clamp: M8  
 Flange [mm]: 74  
 Number of mounting bores: 2  
 Number of Teeth: 10  
 Number of Thread Bores: 2  
 Rated Power [kW]: 2,2  
 Rotation Direction: Clockwise rotation  
 Voltage [V]: 12

**MT-168JM**
**Starter**


FIAT BRAVA (182)  
 FIAT BRAVO I (182)  
 FIAT DOBLO (119)  
 FIAT MAREA (185)  
 FIAT MAREA Weekend (185)  
 FIAT MULTIPLA (186)

**OE**  
 361002B402  
 46231536  
 46451529  
 46524472  
 46531437  
 46748349

Clamp: M8, Pin "50" M6  
 Flange [mm]: 63,5  
 Number of mounting bores: 3  
 Number of Teeth: 9  
 Number of Thread Bores: 3  
 Rated Power [kW]: 1,3  
 Rotation Direction: Clockwise rotation  
 Voltage [V]: 12

**MT-169JM**
**Starter**


BMW 1 (E81)  
 BMW 1 (E87)  
 BMW 1 (F20)  
 BMW 1 (F21)  
 BMW 1 Cabriolet (E88)  
 BMW 1 Coupé (E82)

**OE**  
 12417798006  
 12417801203  
 12417802508  
 12417804138  
 12417804140  
 12417811601

Clamp: Pin "30" M8 B+  
 Clamp: Pin "50" M6  
 Flange [mm]: 69  
 Number of mounting bores: 3  
 Number of Teeth: 11  
 Number of Thread Bores: 0  
 Rated Power [kW]: 2,2  
 Rotation Direction: Clockwise rotation  
 Voltage [V]: 12

**MT-170JM**
**Starter**


AUDI A3 (8P1)  
 AUDI A3 Cabriolet (8P7)  
 AUDI A3 Sportback (8PA)  
 AUDI TT (8J3)  
 AUDI TT (8N3)  
 AUDI TT Roadster (8J9)

**OE**  
 02E911023H  
 02E911023HX  
 02E911023L  
 02E911023LX  
 2E911023H  
 2E911023HX

Clamp: Pin "50" Plug  
 Flange [mm]: 76  
 Number of mounting bores: 2  
 Number of Teeth: 11  
 Number of Thread Bores: 0  
 Rated Power [kW]: 2  
 Rotation Direction: Anti-clockwise rotation  
 Voltage [V]: 12

## Electrics

### MT-171JM

#### Starter



DACIA LOGAN (LS\_)  
 DACIA LOGAN Pick-up (US\_)  
 DACIA SANDERO  
 NISSAN ALMERA II (N16)  
 NISSAN ALMERA II Hatchback (N16)  
 NISSAN MICRA III (K12)

#### OE

2330000Q0G  
 2330000Q0H  
 2330000QAB  
 2330000QAW  
 2330000QAZ  
 2330000QUA

Clamp: M8  
 Flange [mm]: 65  
 Number of mounting bores: 3  
 Number of Teeth: 12  
 Number of Thread Bores: 2  
 Rated Power [kW]: 1,4  
 Rotation Direction: Clockwise rotation  
 Voltage [V]: 12

### MT-172JM

#### Starter



BMW 1 Cabriolet (E88)  
 HYUNDAI ACCENT III (MC)  
 HYUNDAI ACCENT III Tre volumi (MC)  
 HYUNDAI ACCENT IV Tre volumi (RB)  
 HYUNDAI ELANTRA Tre volumi (MD, UD)  
 HYUNDAI GETZ (TB)

#### OE

361002A000  
 361002A100  
 361002A300  
 TT16345  
 TT16345PRO

Clamp: M8 B+  
 Clamp: Pin "50" Plug  
 Flange [mm]: 77  
 Number of mounting bores: 2  
 Number of Teeth: 8  
 Number of Thread Bores: 2  
 Rated Power [kW]: 1,7  
 Rotation Direction: Clockwise rotation  
 Voltage [V]: 12

### MT-173JM

#### Starter



BMW 1 (E81)  
 BMW 1 (E87)  
 BMW 3 (E46)  
 BMW 3 (E90)  
 BMW 3 Cabriolet (E46)  
 BMW 3 Cabriolet (E93)

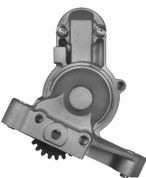
#### OE

12417794952  
 12417796892  
 12417798035  
 12417798036  
 7794952  
 7796892

Clamp: Pin "30" M8 B+  
 Clamp: Pin "50" M6  
 Flange [mm]: 74  
 Number of mounting bores: 2  
 Number of Teeth: 9  
 Number of Thread Bores: 2  
 Rated Power [kW]: 1,8  
 Rotation Direction: Clockwise rotation  
 Voltage [V]: 12

### MT-174JM

#### Starter



CHRYSLER SEBRING (JS)  
 CHRYSLER SEBRING Cabriolet (JS)  
 DODGE AVENGER  
 DODGE CALIBER  
 DODGE JOURNEY  
 JEEP COMPASS (MK49)

#### OE

050033440AC  
 05033440AA  
 05033440AC  
 1810A062  
 1810A143  
 5033440AA

Clamp: M8 B+  
 Number of mounting bores: 3  
 Number of Teeth: 22  
 Number of Thread Bores: 0  
 Rated Power [kW]: 2  
 Rotation Direction: Anti-clockwise rotation  
 Voltage [V]: 12

### MT-175JM

#### Starter



METROCAB Taxi  
 TOYOTA CROWN Tre volumi (\_S1\_)  
 TOYOTA HILUX Fuoristrada chiuso (ZN13\_, LN9\_,  
 RN1\_, YN8\_,  
 TOYOTA HILUX II Pick-up (RN6\_, RN5\_, LN6\_,  
 YN6\_, YN5\_, LN

#### OE

1516979R  
 2810005030  
 2810054070  
 2810054080  
 2810054100  
 2810054110

Clamp: M8  
 Flange [mm]: 82,5  
 Number of mounting bores: 2  
 Number of Teeth: 10  
 Number of Teeth: 11  
 Number of Thread Bores: 1  
 Rated Power [kW]: 2  
 Rotation Direction: Clockwise rotation  
 Voltage [V]: 12

**Electrics**
**MT-176JM**
**Starter**


CHEVROLET AVEO 2 volumi /Coda spiovente (T200)  
 CHEVROLET AVEO 2 volumi /Coda spiovente (T250, T255)  
 CHEVROLET AVEO 2 volumi /Coda spiovente (T300)

**OE**

25187951  
 63522629  
 96289430  
 96469962  
 96497702  
 96943429

Clamp: M8  
 Flange [mm]: 75  
 Number of mounting bores: 2  
 Number of Teeth: 8  
 Number of Thread Bores: 1  
 Position / Degree: 30  
 Rated Power [kW]: 0,8  
 Rotation Direction: Clockwise rotation  
 Voltage [V]: 12

**MT-177JM**
**Starter**


DACIA DOKKER  
 DACIA DUSTER  
 DACIA LODGY  
 DACIA LOGAN (LS\_)  
 DACIA LOGAN II  
 DACIA LOGAN MCV (KS\_)

**OE**

2330000Q1A  
 2330000Q1L  
 2330000QAA  
 2330000QAX  
 233001105R  
 233004003

Clamp: M8  
 Flange [mm]: 65  
 Number of mounting bores: 3  
 Number of Teeth: 8  
 Number of Teeth: 9  
 Number of Thread Bores: 3  
 Rated Power [kW]: 1  
 Rotation Direction: Clockwise rotation  
 Voltage [V]: 12

**MT-178JM**
**Starter**


AUDI A1 (8X1, 8XF)  
 AUDI A1 Sportback (8XA, 8XK)  
 AUDI A3 (8P1)  
 AUDI A3 Sportback (8PA)  
 SEAT ALTEA (5P1)  
 SEAT ALTEA XL (5P5, 5P8)

**OE**

02T911023R  
 02T911023RX  
 02T911023S  
 02T911023SX  
 02T911024A  
 02T911024AX

Clamp: M8 B+  
 Clamp: Pin "50" Plug  
 Flange [mm]: 76  
 Number of mounting bores: 2  
 Number of Teeth: 10  
 Number of Teeth: 9  
 Number of Thread Bores: 0  
 Rated Power [kW]: 1  
 Rotation Direction: Anti-clockwise rotation  
 Voltage [V]: 12

**MT-179JM**
**Starter**


FIAT SEDICI  
 SUBARU JUSTY III (G3X)  
 SUZUKI GRAND VITARA II (JT)  
 SUZUKI IGNIS (FH)  
 SUZUKI IGNIS II  
 SUZUKI JIMNY (FJ)

**OE**

3110063J00  
 3110063J10  
 3110075F60  
 3110080G0  
 3110080G00  
 3110080G1

Clamp: Pin "30" M8 B+  
 Clamp: Pin "50" 6.4mm Plug  
 Flange [mm]: 70  
 Number of mounting bores: 2  
 Number of Teeth: 8  
 Number of Thread Bores: 2  
 Rated Power [kW]: 1  
 Rotation Direction: Clockwise rotation  
 Voltage [V]: 12

**MT-180JM**
**Starter**


MITSUBISHI PAJERO II (V3\_W)  
 MITSUBISHI PAJERO II (V3\_W, V2\_W, V4\_W)  
 MITSUBISHI PAJERO III (V7\_W, V6\_W)  
 MITSUBISHI PAJERO III Fuoristrada aperto (V6\_W, V7\_W)  
 MITSUBISHI PAJERO IV (V8\_W, V9\_W)

**OE**

009154720280  
 1516512R  
 1810A050  
 1810A050R  
 A009154720280  
 M002T63271

Clamp: M8  
 Flange [mm]: 77  
 Number of mounting bores: 2  
 Number of Teeth: 10  
 Number of Thread Bores: 2  
 Rated Power [kW]: 2,2  
 Rotation Direction: Clockwise rotation  
 Voltage [V]: 12

**Electrics**
**MT-181JM**
**Starter**


DAIHATSU HIJET Furgonato (S85)  
 DAIHATSU HIJET Pick-up  
 PIAGGIO PORTER Autobus  
 PIAGGIO PORTER Furgonato  
 PIAGGIO PORTER Pianale piatto/Telaio

**OE**  
 2280005711  
 2810087548  
 2810087551  
 2810087551000

Clamp: M8  
 Flange [mm]: 74  
 Number of mounting bores: 2  
 Number of Teeth: 8  
 Number of Thread Bores: 0  
 Rated Power [kW]: 0,8  
 Rotation Direction: Clockwise rotation  
 Voltage [V]: 12

**MT-182JM**
**Starter**


RENAULT KANGOO (KC0/1\_)  
 RENAULT MEGANE I (BA0/1\_)  
 RENAULT MEGANE I Classic (LA0/1\_)  
 RENAULT MEGANE I Coach (DA0/1\_)  
 RENAULT MEGANE I Grandtour (KA0/1\_)  
 RENAULT MEGANE Scenic (JA0/1\_)

**OE**  
 6001545511  
 7700113267  
 7700113627  
 7700116282  
 7711134297  
 7711134790

Clamp: M8  
 Flange [mm]: 65  
 Number of mounting bores: 3  
 Number of Teeth: 12  
 Number of Thread Bores: 3  
 Rated Power [kW]: 1,7  
 Rotation Direction: Clockwise rotation  
 Voltage [V]: 12

**MT-183JM**
**Starter**


FORD TRANSIT Autobus (E\_)  
 FORD TRANSIT Autobus (V\_)  
 FORD TRANSIT Furgonato (E\_)  
 FORD TRANSIT Furgonato (T\_)  
 FORD TRANSIT Furgonato (V\_)  
 FORD TRANSIT Pianale piatto/Telaio (E\_)

**OE**  
 1008823  
 1024508  
 1027928  
 1059179  
 1073108  
 1093471

Clamp: M8, Pin "50" M6  
 Flange [mm]: 92  
 Number of mounting bores: 3  
 Number of Teeth: 13  
 Number of Thread Bores: 0  
 Rated Power [kW]: 2,3  
 Rotation Direction: Clockwise rotation  
 Voltage [V]: 12

**MT-184JM**
**Starter**


AUDI A3 (8P1)  
 AUDI A3 Cabriolet (8P7)  
 AUDI A3 Sportback (8PA)  
 SEAT ALTEA (5P1)  
 SEAT ALTEA XL (5P5, 5P8)  
 SEAT IBIZA V (6J5, 6P5)

**OE**  
 0AH911023  
 0AH911023A  
 0AH911023AX  
 0AH911023D  
 0AH911023DX  
 0AH911023K

Clamp: M8  
 Flange [mm]: 76  
 Number of mounting bores: 3  
 Number of Teeth: 10  
 Number of Thread Bores: 0  
 Rated Power [kW]: 1,1  
 Rotation Direction: Clockwise rotation  
 Voltage [V]: 12

**MT-185JM**
**Starter**


AUDI A4 (8EC, B7)  
 AUDI A4 Avant (8ED, B7)  
 AUDI A4 Cabriolet (8H7, B6, 8HE, B7)  
 AUDI A6 (4F2, C6)  
 AUDI A6 Avant (4F5, C6)  
 SEAT EXEO (3R2)

**OE**  
 03G911023  
 03G911023X  
 TT15338PRO

Clamp: M8 B+  
 Flange [mm]: 82  
 Number of mounting bores: 2  
 Number of Teeth: 9  
 Number of Thread Bores: 0  
 Rated Power [kW]: 2  
 Rotation Direction: Clockwise rotation  
 Voltage [V]: 12

## Electrics

### MT-186JM

#### Starter



AUDI A1 (8X1, 8XF)  
 AUDI A1 Sportback (8XA, 8XK)  
 AUDI A3 (8P1)  
 AUDI A3 Cabriolet (8P7)  
 AUDI A3 Sportback (8PA)  
 SEAT ALTEA (5P1)

#### OE

02N911023N  
 02Z911023M  
 02Z911023MX  
 02Z911023N  
 02Z911023NX  
 02Z911023P

Clamp: M8 B+  
 Flange [mm]: 76  
 Number of mounting bores: 3  
 Number of Teeth: 11  
 Number of Teeth: 12  
 Number of Thread Bores: 0  
 Rated Power [kW]: 1,7  
 Rotation Direction: Clockwise rotation  
 Voltage [V]: 12

### MT-187JM

#### Starter



NISSAN NAVARA (D40)  
 NISSAN PATHFINDER (R51)

#### OE

23300EB300  
 23300EB30A  
 23300EB30B  
 23300EB30REX  
 23300EB71B  
 23300EB71E

Clamp: Pin "30" M8 B+  
 Clamp: Pin "50" M5  
 Flange [mm]: 70  
 Number of mounting bores: 2  
 Number of Teeth: 11  
 Number of Teeth: 12  
 Number of Thread Bores: 2  
 Rated Power [kW]: 2  
 Rotation Direction: Clockwise rotation  
 Voltage [V]: 12

### MT-188JM

#### Starter



CITROEN AX (ZA-)  
 CITROEN BERLINGO (B9)  
 CITROEN BERLINGO (MF)  
 CITROEN BX (XB-)  
 CITROEN BX Break (XB-)  
 CITROEN C-ELYSEE

#### OE

1516758R  
 3960404  
 534054A  
 534054B  
 534054C  
 534054D

Clamp: M8  
 Clamp: Pin "50" 6.4mm Plug  
 Number of mounting bores: 3  
 Number of Teeth: 10  
 Number of Teeth: 9  
 Number of Thread Bores: 1  
 Rated Power [kW]: 0,9  
 Rotation Direction: Clockwise rotation  
 Voltage [V]: 12

## Engine

### KAA-003JM

#### Camshaft Kit



FORD FOCUS IV  
 FORD FOCUS IV Turnier (HP)  
 FORD GALAXY  
 FORD GALAXY MK III VAN (CK)  
 FORD KUGA III (DFK)  
 FORD MONDEO V 2 volumi /Coda spiovente

#### OE

2321504  
 2325380  
 2434799  
 2435502  
 2536951  
 2626577

Fitting Position: Exhaust Side  
 Fitting Position: Intake Side  
 Supplementary Article/Supplementary Info 2:  
 With cover

## Filter

### FA-0339JM

#### Air Filter



JAGUAR X-TYPE (CF1)  
 JAGUAR X-TYPE Estate

#### OE

4X43-9601-BA  
 C2S 26965  
 C2S 36774  
 C2S36774

Filter Type: Filter Insert  
 For OE number: C2S36774  
 Height [mm]: 56  
 Length [mm]: 454  
 Width [mm]: 89

## Filter

### FAA-054JM

#### Filter, interior air



SEAT Mii (KF1\_)  
SKODA CITIGO  
SKODA E-CITIGO (NE1)  
VW LOAD UP  
VW UP

#### OE

1S0 819 669  
1S0819669

Filter Type: Activated Carbon Filter  
For OE number: 1S0 819 669  
Height [mm]: 35  
Length [mm]: 254  
Width [mm]: 182

### FC-0202JM

#### Fuel filter



ALFA ROMEO 147 (937)  
ALFA ROMEO 156 (932)  
ALFA ROMEO 156 Sportwagon (932)  
ALFA ROMEO 166 (936)  
CITROEN JUMPER Autobus (230P)  
CITROEN JUMPER Autobus (244, Z\_)

#### OE

0 K2KB 13480  
0 K2KK 13483  
0K2KK13 483A  
1906 66  
1906 67  
1906 C3

Filter Type: Screw-on Filter  
For OE number: 46797378  
Height [mm]: 158  
Inner Diameter 2 [mm]: 60  
Outer Diameter 2 [mm]: 68  
Outer Diameter [mm]: 84  
Thread Size Exit: M 16 X 1.5

## Mounting

### SG-0001JM

#### Steering Box



FIAT 500 (312)  
FIAT 500 C (312)  
FORD KA (RU8)

#### OE

10774862  
10797155  
1797155  
51915239  
51915326  
51934264

Axle Joint Thread Size: M12x1,5  
Axle Joint Thread Type: with external thread  
Driver Position: For left-hand drive vehicles  
Input shaft connecting type: Splined  
Input Shaft Diameter [mm]: 14,1  
Input shaft height [mm]: 128  
Left-hand / Right-hand Traffic: For right-hand traffic  
Length 1/ Length 2 [mm]: stroke= 150  
Mounting Bores Distance [mm]: 339  
Number of splines on input shaft: 26  
Number of steering wheel turns: 3  
Operating Mode: Electric  
Operating Mode: Manual  
Overall Length [mm]: 1045  
Steering Gear Type: Rack-and-pinion steering gear

### SG-0002JM

#### Steering Box



FIAT 500L

#### OE

51885439  
51909794

Axle Joint Thread Size: M14x1,5  
Axle Joint Thread Type: with external thread  
Driver Position: For left-hand drive vehicles  
Input shaft connecting type: Splined  
Input Shaft Diameter [mm]: 14,1  
Input shaft height [mm]: 114  
Left-hand / Right-hand Traffic: For right-hand traffic  
Length 1/ Length 2 [mm]: stroke= 145  
Mounting Bores Distance [mm]: 412  
Number of splines on input shaft: 26  
Number of steering wheel turns: 3  
Operating Mode: Electric  
Operating Mode: Manual  
Overall Length [mm]: 1165  
Steering Gear Type: Rack-and-pinion steering gear

## Mounting

### SG-0003JM

#### Steering Box



FIAT 500X  
 JEEP COMPASS (MP)  
 JEEP RENEGADE Fuoristrada chiuso  
 JEEP RENEGADE Fuoristrada chiuso (BU)  
 JEEP RENEGADE VAN (BU, B1)

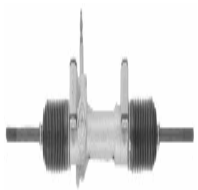
#### OE

51967456  
 51978398  
 52005180  
 52076430  
 52113668

Driver Position: For left-hand drive vehicles  
 Length [mm]: 1664  
 Mounting Bores Distance [mm]: 412  
 Vehicle Equipment: For vehicles with power steering

### SG-0004JM

#### Steering Box



FIAT SEICENTO (187)  
 FIAT SEICENTO Van (187)

#### OE

46536787  
 46847283

Axle Joint Thread Size: M12x1,5  
 Axle Joint Thread Type: with external thread  
 Driver Position: For left-hand drive vehicles  
 Input shaft connecting type: Splined  
 Input Shaft Diameter [mm]: 14,1  
 Input shaft height [mm]: 58,5  
 Left-hand / Right-hand Traffic: For right-hand traffic  
 Length 1/ Length 2 [mm]: stroke= 150  
 Mounting Bores Distance [mm]: 240  
 Number of splines on input shaft: 17  
 Number of steering wheel turns: 3  
 Operating Mode: Electric  
 Operating Mode: Manual  
 Overall Length [mm]: 910  
 Steering Gear Type: Rack-and-pinion steering gear  
 Vehicle Equipment: For vehicles with power steering

### SG-0005JM

#### Steering Box



FIAT STILO (192)  
 FIAT STILO Multi Wagon (192)

#### OE

51733142  
 51785771  
 51809104  
 51833718  
 51837769  
 51931476

Axle Joint Thread Size: M14x1,5  
 Axle Joint Thread Type: with external thread  
 Driver Position: For left-hand drive vehicles  
 Input shaft connecting type: Splined  
 Input Shaft Diameter [mm]: 14,1  
 Input shaft height [mm]: 136  
 Left-hand / Right-hand Traffic: For right-hand traffic  
 Length 1/ Length 2 [mm]: stroke= 145  
 Mounting Bores Distance [mm]: 436  
 Number of splines on input shaft: 26  
 Number of steering wheel turns: 3  
 Number of Thread Bores: 2  
 Operating Mode: Electric  
 Operating Mode: Manual  
 Overall Length [mm]: 1240  
 Steering Gear Type: Rack-and-pinion steering gear

## Mounting

### SG-0006JM

#### Steering Box



RENAULT CLIO Grandtour (KR0/1\_)  
RENAULT CLIO III (BR0/1, CR0/1)  
RENAULT MODUS / GRAND MODUS (F/JP0\_)

#### OE

48001-BC43A  
8200124407  
8200124408  
8200565645  
8200595934

Axle Joint Thread Size: M14x1,5  
Axle Joint Thread Type: with external thread  
Driver Position: For left-hand drive vehicles  
Input shaft connecting type: Square  
Input Shaft Diameter [mm]: 16,5  
Input shaft height [mm]: 132  
Left-hand / Right-hand Traffic: For right-hand traffic  
Length 1/ Length 2 [mm]: stroke= 130  
Mounting Bores Distance [mm]: 317  
Number of steering wheel turns: 3  
Number of Thread Bores: 2  
Operating Mode: Electric  
Operating Mode: Manual  
Overall Length [mm]: 1245  
Steering Gear Type: Rack-and-pinion steering gear

### SG-0007JM

#### Steering Box



OPEL AGILA (A) (H00)  
SUZUKI WAGON R+ (EM)  
SUZUKI WAGON R+ (MM)

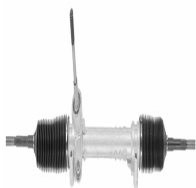
#### OE

4700659  
48510-83E50  
48510-83E50-000  
900658  
9195074  
9210355

Axle Joint Thread Size: M12x1,25  
Axle Joint Thread Type: with external thread  
Driver Position: For left-hand drive vehicles  
Input shaft connecting type: Square  
Input Shaft Diameter [mm]: 15,7  
Input shaft height [mm]: 52  
Left-hand / Right-hand Traffic: For right-hand traffic  
Length 1/ Length 2 [mm]: stroke= 120  
Number of splines on input shaft: 28  
Number of steering wheel turns: 3  
Operating Mode: Electric  
Operating Mode: Manual  
Overall Length [mm]: 1175  
Steering Gear Type: Rack-and-pinion steering gear

### SG-0008JM

#### Steering Box



FIAT 500 (312)  
FIAT 500 C (312)  
FORD KA (RU8)

#### OE

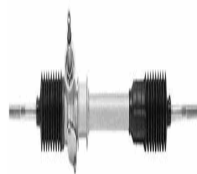
1541354  
1686264  
51786814  
51875886  
51875894  
51889312

Axle Joint Thread Size: M12x1,5  
Axle Joint Thread Type: with external thread  
Driver Position: For left-hand drive vehicles  
Input shaft connecting type: Splined  
Input Shaft Diameter [mm]: 14,1  
Input shaft height [mm]: 128  
Left-hand / Right-hand Traffic: For right-hand traffic  
Length 1/ Length 2 [mm]: stroke= 150  
Mounting Bores Distance [mm]: 339  
Number of splines on input shaft: 26  
Number of steering wheel turns: 3  
Operating Mode: Electric  
Operating Mode: Manual  
Overall Length [mm]: 1045  
Steering Gear Type: Rack-and-pinion steering gear

## Mounting

### SG-0009JM

#### Steering Box



FIAT PANDA (141A\_)  
SEAT PANDA (141A)

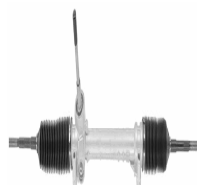
#### OE

5960838  
5970711  
7074796  
7534669  
7582329  
7750258

Axle Joint Thread Size: M12x1,5  
Axle Joint Thread Type: with external thread  
Driver Position: For left-hand drive vehicles  
Input shaft connecting type: Splined  
Input Shaft Diameter [mm]: 14,1  
Input shaft height [mm]: 55  
Left-hand / Right-hand Traffic: For right-hand traffic  
Length 1/ Length 2 [mm]: stroke= 130  
Number of splines on input shaft: 17  
Number of steering wheel turns: 4  
Operating Mode: Manual  
Operating Mode: Mechanical  
Overall Length [mm]: 840  
Steering Gear Type: Rack-and-pinion steering gear

### SG-0010JM

#### Steering Box



FIAT PANDA (519, 312, 319)  
LANCIA YPSILON (312, 846)  
LANCIA YPSILON (843)

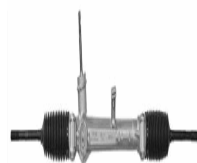
#### OE

51907994  
51907996  
51965755

Axle Joint Thread Size: M12x1,5  
Axle Joint Thread Type: with external thread  
Driver Position: For left-hand drive vehicles  
Input shaft connecting type: Splined  
Input Shaft Diameter [mm]: 14,1  
Input shaft height [mm]: 127  
Left-hand / Right-hand Traffic: For right-hand traffic  
Length 1/ Length 2 [mm]: stroke= 150  
Mounting Bores Distance [mm]: 339  
Number of splines on input shaft: 26  
Number of steering wheel turns: 3  
Operating Mode: Electric  
Operating Mode: Manual  
Overall Length [mm]: 1015  
Steering Gear Type: Rack-and-pinion steering gear

### SG-0011JM

#### Steering Box



FIAT GRANDE PUNTO (199)  
FIAT PUNTO Van (199)

#### OE

51799754  
51802155  
51829169  
51829620  
51861106  
55700467

Axle Joint Thread Size: M14x1,5  
Axle Joint Thread Type: with external thread  
Driver Position: For left-hand drive vehicles  
Input shaft connecting type: Splined  
Input Shaft Diameter [mm]: 14,1  
Input shaft height [mm]: 83,5  
Left-hand / Right-hand Traffic: For right-hand traffic  
Length 1/ Length 2 [mm]: stroke= 145  
Mounting Bores Distance [mm]: 412  
Number of splines on input shaft: 26  
Operating Mode: Electric  
Operating Mode: Manual  
Overall Length [mm]: 1170  
Steering Gear Type: Rack-and-pinion steering gear

## Mounting

### SG-0012JM

#### Steering Box



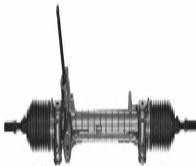
CHEVROLET MATIZ (M200, M250)  
CHEVROLET SPARK

**OE**  
95082999  
96482901

Axle Joint Thread Size: M12x1,5  
Axle Joint Thread Type: with external thread  
Driver Position: For left-hand drive vehicles  
Input shaft connecting type: Splined  
Input Shaft Diameter [mm]: 15,7  
Input shaft height [mm]: 133  
Left-hand / Right-hand Traffic: For right-hand traffic  
Length 1/ Length 2 [mm]: stroke= 145  
Number of splines on input shaft: 36  
Number of steering wheel turns: 4,5  
Operating Mode: Manual  
Operating Mode: Mechanical  
Overall Length [mm]: 1095  
Steering Gear Type: Rack-and-pinion steering gear

### SG-0013JM

#### Steering Box



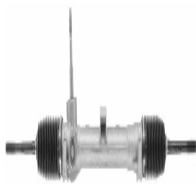
CITROEN C1 (PM\_, PN\_)  
PEUGEOT 107  
TOYOTA AYGO (WNB1\_, KGB1\_)

**OE**  
4001.33  
4001.35  
4006.61  
45500-0H010

Axle Joint Thread Size: M12x1,25  
Axle Joint Thread Type: with external thread  
Driver Position: For left-hand drive vehicles  
Input shaft connecting type: Splined  
Input Shaft Diameter [mm]: 14  
Input shaft height [mm]: 92  
Left-hand / Right-hand Traffic: For right-hand traffic  
Length 1/ Length 2 [mm]: stroke= 140  
Mounting Bores Distance [mm]: 448  
Number of splines on input shaft: 34  
Number of steering wheel turns: 3  
Operating Mode: Electric  
Operating Mode: Manual  
Overall Length [mm]: 1050  
Steering Gear Type: Rack-and-pinion steering gear

### SG-0014JM

#### Steering Box



FIAT IDEA  
LANCIA MUSA (350)

**OE**  
51725101  
51832249  
51887957

Axle Joint Thread Size: M14x1,5  
Axle Joint Thread Type: with external thread  
Driver Position: For left-hand drive vehicles  
Input shaft connecting type: Splined  
Input Shaft Diameter [mm]: 14,1  
Input shaft height [mm]: 94  
Left-hand / Right-hand Traffic: For right-hand traffic  
Length 1/ Length 2 [mm]: stroke= 135  
Mounting Bores Distance [mm]: 386  
Number of splines on input shaft: 26  
Number of steering wheel turns: 3  
Operating Mode: Electric  
Operating Mode: Manual  
Overall Length [mm]: 1030  
Steering Gear Type: Rack-and-pinion steering gear

## Mounting

### SG-0015JM

#### Steering Box



FIAT PANDA (169)  
FIAT PANDA Van (141\_)  
FIAT PANDA Van (169)

#### OE

51708841  
51876158  
51876159  
51887444  
51887445

Axle Joint Thread Size: M12x1,5  
Axle Joint Thread Type: with external thread  
Driver Position: For left-hand drive vehicles  
Input shaft connecting type: Splined  
Input Shaft Diameter [mm]: 14,1  
Input shaft height [mm]: 128  
Left-hand / Right-hand Traffic: For right-hand traffic  
Length 1/ Length 2 [mm]: stroke= 150  
Mounting Bores Distance [mm]: 339  
Number of splines on input shaft: 26  
Number of steering wheel turns: 3  
Operating Mode: Electric  
Operating Mode: Manual  
Overall Length [mm]: 990  
Steering Gear Type: Rack-and-pinion steering gear  
Vehicle Equipment: For vehicles with power steering

### SG-0016JM

#### Steering Box



FIAT PANDA (169)  
FIAT PANDA Van (141\_)  
FIAT PANDA Van (169)

#### OE

51754435  
51754446  
51876162  
51876163  
51876164  
51876165

Axle Joint Thread Size: M12x1,5  
Axle Joint Thread Type: with external thread  
Driver Position: For left-hand drive vehicles  
Input shaft connecting type: Splined  
Input Shaft Diameter [mm]: 14,1  
Input shaft height [mm]: 128  
Left-hand / Right-hand Traffic: For right-hand traffic  
Length 1/ Length 2 [mm]: stroke= 125  
Mounting Bores Distance [mm]: 339  
Number of splines on input shaft: 26  
Number of steering wheel turns: 3  
Operating Mode: Electric  
Operating Mode: Manual  
Overall Length [mm]: 1010  
Steering Gear Type: Rack-and-pinion steering gear

### SG-0017JM

#### Steering Box



FIAT PUNTO (176)  
FIAT PUNTO Cabriolet (176C)  
FIAT PUNTO Van (176L)  
LANCIA Y (840A)

#### OE

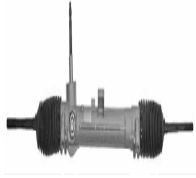
7797607  
7797608

Axle Joint Thread Size: M12x1,5  
Axle Joint Thread Type: with external thread  
Driver Position: For left-hand drive vehicles  
Input shaft connecting type: Splined  
Input Shaft Diameter [mm]: 14,1  
Input shaft height [mm]: 93  
Left-hand / Right-hand Traffic: For right-hand traffic  
Length 1/ Length 2 [mm]: stroke= 135  
Mounting Bores Distance [mm]: 313  
Number of splines on input shaft: 17  
Number of steering wheel turns: 4,5  
Operating Mode: Manual  
Operating Mode: Mechanical  
Overall Length [mm]: 1025  
Steering Gear Type: Rack-and-pinion steering gear

## Mounting

### SG-0018JM

#### Steering Box



FIAT PUNTO (188)  
FIAT PUNTO Van (188AX)

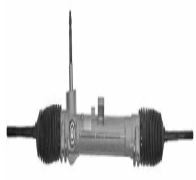
#### OE

46747626  
46753991

Axle Joint Thread Size: M12x1,5  
Axle Joint Thread Type: with external thread  
Driver Position: For left-hand drive vehicles  
Input shaft connecting type: Splined  
Input Shaft Diameter [mm]: 14,1  
Input shaft height [mm]: 96,5  
Left-hand / Right-hand Traffic: For right-hand traffic  
Length 1/ Length 2 [mm]: stroke= 130  
Mounting Bores Distance [mm]: 386  
Number of splines on input shaft: 17  
Operating Mode: Electric  
Operating Mode: Manual  
Overall Length [mm]: 1025  
Steering Gear Type: Rack-and-pinion steering gear  
Vehicle Equipment: For vehicles with power steering

### SG-0019JM

#### Steering Box



FIAT PUNTO (188)  
FIAT PUNTO Van (188AX)

#### OE

46843300  
51705417

Axle Joint Thread Size: M12x1,5  
Axle Joint Thread Type: with external thread  
Driver Position: For left-hand drive vehicles  
Input shaft connecting type: Splined  
Input Shaft Diameter [mm]: 14,1  
Input shaft height [mm]: 94  
Left-hand / Right-hand Traffic: For right-hand traffic  
Length 1/ Length 2 [mm]: stroke= 130  
Mounting Bores Distance [mm]: 386  
Number of splines on input shaft: 26  
Operating Mode: Electric  
Operating Mode: Manual  
Overall Length [mm]: 1025  
Steering Gear Type: Rack-and-pinion steering gear  
Vehicle Equipment: For vehicles with power steering

### SG-0020JM

#### Steering Box



NISSAN QASHQAI / QASHQAI +2 (J10, JJ10)  
RENAULT KOLEOS (HY\_)

#### OE

48001-3622R  
48001-JD000  
48001-JD900  
48001-JD90B  
48001-JY40A

Axle Joint Thread Size: M14x1,5  
Axle Joint Thread Type: with external thread  
Driver Position: For left-hand drive vehicles  
Input shaft connecting type: Square  
Input Shaft Diameter [mm]: 16,5  
Left-hand / Right-hand Traffic: For right-hand traffic  
Length 1/ Length 2 [mm]: stroke= 155  
Mounting Bores Distance [mm]: 317  
Number of steering wheel turns: 3,5  
Operating Mode: Electric  
Operating Mode: Manual  
Overall Length [mm]: 1105  
Steering Gear Type: Rack-and-pinion steering gear

## Mounting

SG-0021JM

Steering Box



NISSAN QASHQAI  
NISSAN QASHQAI (J11, J11\_)  
RENAULT KADJAR

**OE**

48 00 14E H0A  
48001-4EH0A  
48001-4EH0B  
49 00 138 76R

Axle Joint Thread Size: M14x1,5  
Length [mm]: 520  
Mounting Bores Distance [mm]: 290  
Operating Mode: Mechanical