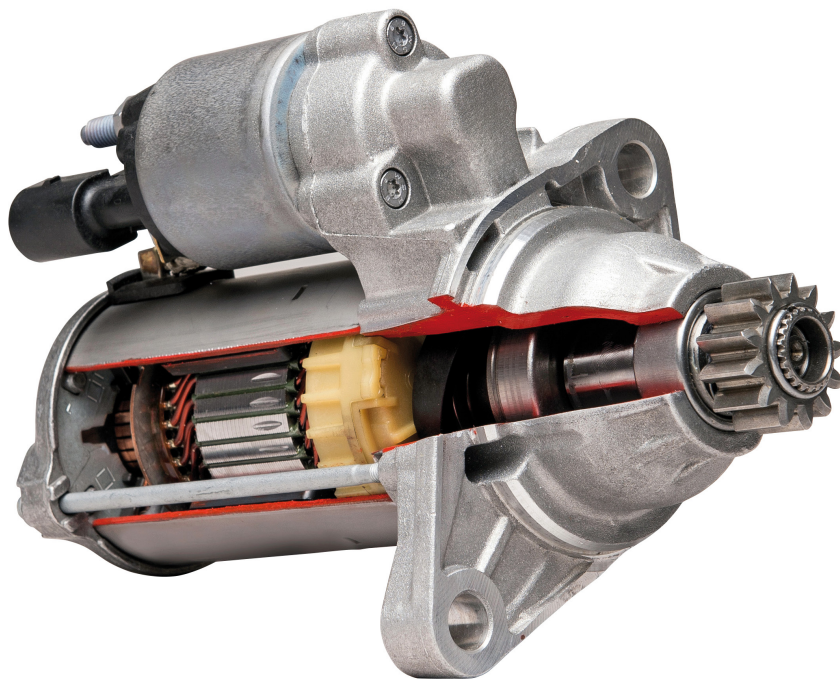




QualityTested®
Automotive Spare Parts

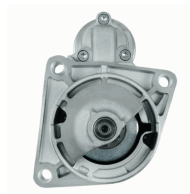
STARTERS MOTORINI AVVIAMENTO



www.qualitytested.com

CATALOGUE
FOR CARS AND
COMMERCIAL VEHICLES

CATALOGO
PER AUTOVETTURE E
VEICOLI COMMERCIALI

Electrics
MT-101JM
Starter


ALFA ROMEO 145 (930)
 ALFA ROMEO 146 (930)
 ALFA ROMEO 147 (937)
 ALFA ROMEO 156 (932)
 ALFA ROMEO 156 Sportwagon (932)
 ALFA ROMEO 159 (939)

OE

1202282
 3110079J00
 3110079J00000
 31100H79J00
 31100H79J00000
 31100T79J00

Clamp: Pin "30" M8 B+
 Clamp: Pin "50" M6
 Flange [mm]: 81,5
 Number of mounting bores: 3
 Number of Teeth: 9
 Number of Thread Bores: 0
 Rated Power [kW]: 2
 Rotation Direction: Clockwise rotation
 Voltage [V]: 12

MT-102JM
Starter


ALFA ROMEO MITO (955)
 CITROEN NEMO Station wagon
 FIAT 500 (312)
 FIAT 500 C (312)
 FIAT DOBLO (119)
 FIAT FIORINO MPV / Space wagon (225_)

OE

09115193
 1202265
 1202499
 1571299
 1637179980
 1726349

Clamp: M8 B+
 Flange [mm]: 64
 Number of mounting bores: 2
 Number of Teeth: 9
 Number of Thread Bores: 1
 Rated Power [kW]: 1,3
 Rotation Direction: Clockwise rotation
 Voltage [V]: 12

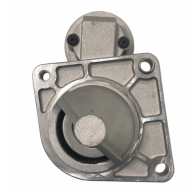
MT-103JM
Starter


ABARTH 124 Spider (348_)
 ABARTH 500 (312)
 ABARTH 500C (312)
 ABARTH PUNTO EVO (199)
 ALFA ROMEO GIULIETTA (940)
 ALFA ROMEO MITO (955)

OE

1202291
 1202503
 136908
 1542468
 1567033
 1726802

Clamp: M8 B+
 Flange [mm]: 64
 Number of mounting bores: 3
 Number of Teeth: 10
 Number of Teeth: 8
 Number of Teeth: 9
 Number of Thread Bores: 1
 Rated Power [kW]: 1
 Rotation Direction: Clockwise rotation
 Voltage [V]: 12

MT-104JM
Starter


FIAT PALIO (178BX)
 FIAT PALIO Weekend (178DX)
 FIAT PUNTO (188)
 FIAT SEICENTO (187)
 FIAT SIENA (178_)
 LANCIA Y (840A)

OE

136910
 2506910
 46429594
 46473785
 46518059
 46548653

Clamp: M8, Pin "50" M6
 Flange [mm]: 64
 Number of mounting bores: 3
 Number of Teeth: 10
 Number of Teeth: 8
 Number of Teeth: 9
 Number of Thread Bores: 1
 Rated Power [kW]: 0,8
 Rotation Direction: Clockwise rotation
 Voltage [V]: 12

MT-105JM
Starter


DACIA LOGAN (LS_)
 DACIA LOGAN II
 DACIA LOGAN MCV (KS_)
 DACIA LOGAN MCV II
 DACIA LOGAN Pick-up (US_)
 DACIA SANDERO

OE

2330000Q0F
 2330000Q1H
 2330000Q1M
 2330000Q2C
 2330000Q6L
 2330000QA0

Clamp: M8 B+, Pin "50" Plug
 Flange [mm]: 63
 Number of mounting bores: 3
 Number of Teeth: 10
 Number of Teeth: 12
 Number of Teeth: 13
 Number of Thread Bores: 3
 Rated Power [kW]: 1,4
 Rotation Direction: Clockwise rotation
 Voltage [V]: 12

Electrics
MT-106JM
Starter

 IVECO MASSIF Pick-up
 IVECO MASSIF Station Wagon

OE
 1516689R
 2994100
 2995990
 2997002
 42498717
 500059592

 Clamp: M8, Pin "50" M6
 Flange [mm]: 81,5
 Number of mounting bores: 3
 Number of Teeth: 9
 Number of Thread Bores: 3
 Rated Power [kW]: 2,3
 Rotation Direction: Clockwise rotation
 Voltage [V]: 12

MT-107JM
Starter

 FORD FIESTA V (JH_, JD_)
 FORD FIESTA VI
 FORD FUSION (JU_)
 MAZDA 2 (DY)

OE
 1140757
 1144505
 1350459
 1366195
 1368974
 1483817

 Clamp: M8, Pin "50" M6
 Number of mounting bores: 3
 Number of Teeth: 12
 Number of Thread Bores: 2
 Rated Power [kW]: 1,4
 Rotation Direction: Clockwise rotation
 Voltage [V]: 12

MT-108JM
Starter

 CITROEN BERLINGO (B9)
 CITROEN BERLINGO (K9)
 CITROEN BERLINGO (MF)
 CITROEN C-ELYSEE
 CITROEN C1 (PM_, PN_)
 CITROEN C2 (JM_)

OE
 1213257
 1638115880
 28100YV010
 28100YV011
 3640319
 5802A2

 Clamp: Pin "30" M8 B+
 Clamp: Pin "50" M5
 Number of mounting bores: 4
 Number of Teeth: 11
 Number of Teeth: 12
 Number of Thread Bores: 2
 Rated Power [kW]: 1,4
 Rotation Direction: Clockwise rotation
 Voltage [V]: 12

MT-109JM
Starter

 CITROEN JUMPER Autobus
 CITROEN JUMPER Autobus (230P)
 CITROEN JUMPER Autobus (244, Z_)
 CITROEN JUMPER Furgonato
 CITROEN JUMPER Furgonato (230L)
 CITROEN JUMPER Furgonato (244)

OE
 130019808
 1300198080
 131955508
 1329201080
 1349920080
 1516685R

 Clamp: M8, Pin "50" M6
 Flange [mm]: 81,5
 Number of mounting bores: 3
 Number of Teeth: 9
 Number of Thread Bores: 3
 Rated Power [kW]: 2,5
 Rotation Direction: Clockwise rotation
 Voltage [V]: 12

MT-110JM
Starter

 CITROEN JUMPER Autobus (230P)
 CITROEN JUMPER Autobus (244, Z_)
 CITROEN JUMPER Furgonato (230L)
 CITROEN JUMPER Furgonato (244)
 CITROEN JUMPER Pianale piatto/Telaio (230)
 CITROEN JUMPER Pianale piatto/Telaio (244)

OE
 1319555080
 1331329080
 134705808
 1347058080
 134705880
 1524014R

 Clamp: M8
 Flange [mm]: 82
 Number of mounting bores: 3
 Number of Teeth: 9
 Number of Thread Bores: 3
 Rated Power [kW]: 2,5
 Rotation Direction: Clockwise rotation
 Voltage [V]: 12

Electrics
MT-111JM
Starter


CITROEN BERLINGO (MF)
 CITROEN BX (XB-_)
 CITROEN BX Break (XB-_)
 CITROEN C-CROSSER (EP-)
 CITROEN C15 Station wagon
 CITROEN C4 Coupé (LA-)

OE

1320921080
 1332419080
 1502453001E
 151412580
 1516680R
 1516741R

Clamp: Pin "30" M8 B+
 Clamp: Pin "50" M5
 Number of mounting bores: 3
 Number of Teeth: 11
 Number of Thread Bores: 2
 Rated Power [kW]: 1,9
 Rotation Direction: Clockwise rotation
 Voltage [V]: 12

MT-112JM
Starter


CITROEN BERLINGO (MF)
 CITROEN BX (XB-_)
 CITROEN BX Break (XB-_)
 CITROEN C-CROSSER (EP-)
 CITROEN C15 Station wagon
 CITROEN C4 Coupé (LA-)

OE

1005831356
 1319121080
 1342792080
 1516776R
 1516779R
 1810A101

Clamp: M8, Pin "50" M5
 Flange [mm]: 66
 Number of mounting bores: 3
 Number of Teeth: 10
 Number of Teeth: 11
 Number of Teeth: 12
 Number of Teeth: 13
 Number of Thread Bores: 3
 Rated Power [kW]: 1,4
 Rotation Direction: Clockwise rotation
 Voltage [V]: 12

MT-113JM
Starter


MERCEDES-BENZ CLASSE C (W202)
 MERCEDES-BENZ CLASSE C (W203)
 MERCEDES-BENZ CLASSE C Coupe (CL203)
 MERCEDES-BENZ CLASSE C Station wagon (S202)
 MERCEDES-BENZ CLASSE C T-Model (S203)

OE

0031515001
 003151500180
 0041512101
 0041513001
 0041513901
 0041514501

Clamp: M8
 Flange [mm]: 82,5
 Number of mounting bores: 2
 Number of Teeth: 10
 Number of Thread Bores: 2
 Rated Power [kW]: 2
 Rotation Direction: Clockwise rotation
 Voltage [V]: 12

MT-114JM
Starter


FORD FIESTA IV (JA-, JB-)
 FORD FOCUS (DAW, DBW)
 FORD FOCUS Station wagon (DNW)
 FORD FOCUS Tre volumi (DFW)
 FORD PUMA (EC-)
 MAZDA 121 III (JASM, JBSM)

OE

0018882
 1004565
 1004566
 1011330
 1011331
 1018882

Clamp: Pin "50" M6
 Flange [mm]: 76
 Number of mounting bores: 3
 Number of Teeth: 10
 Number of Thread Bores: 3
 Rated Power [kW]: 1,1
 Rotation Direction: Clockwise rotation
 Voltage [V]: 12

MT-115JM
Starter


CITROEN AX (ZA-)
 CITROEN BERLINGO (B9)
 CITROEN BERLINGO (MF)
 CITROEN C-ELYSEE
 CITROEN C2 (JM-)
 CITROEN C3 I (FC-)

OE

580200000000
 5802CR
 5802E9
 5802ER
 5802F3
 5802Q3

Clamp: M8, Pin "50" M5
 Number of mounting bores: 3
 Number of Teeth: 9
 Number of Thread Bores: 1
 Rated Power [kW]: 0,9
 Rotation Direction: Clockwise rotation
 Voltage [V]: 12

Electrics
MT-116JM
Starter


ALFA ROMEO 159 (939)
 ALFA ROMEO 159 Sportwagon (939)
 ALFA ROMEO BRERA
 ALFA ROMEO SPIDER (939)
 CHRYSLER DELTA
 FIAT BRAVO II (198)

OE

0001Y03631
 00K68080459AA
 3110055L00
 3110055L00000
 3110055L01
 31100T55L00

Clamp: M8 B+, Pin "50" M6
 Flange [mm]: 76
 Number of mounting bores: 3
 Number of Teeth: 10
 Number of Teeth: 11
 Number of Thread Bores: 0
 Rated Power [kW]: 1,4
 Rotation Direction: Clockwise rotation
 Voltage [V]: 12

MT-117JM
Starter


FIAT PALIO (178BX)
 FIAT PALIO Weekend (178DX)
 FIAT PANDA (141A_)
 FIAT PUNTO (188)
 FIAT SEICENTO (187)
 FIAT SIENA (178_)

OE

46432262
 46465475
 46758241
 46763530
 46765839
 46796553

Clamp: M8, Pin "50" M6
 Flange [mm]: 64
 Number of mounting bores: 3
 Number of Teeth: 9
 Number of Thread Bores: 2
 Rated Power [kW]: 0,8
 Rotation Direction: Clockwise rotation
 Voltage [V]: 12

MT-118JM
Starter


LAND ROVER DEFENDER Cabrio (LD)
 LAND ROVER DEFENDER Pick-up (LD_)
 LAND ROVER DEFENDER Station Wagon (LD)

OE

1372739
 1375378
 1385378
 1574338
 1606413580
 1669558

Clamp: Pin "30" M8 B+
 Clamp: Pin "50" M6
 Flange [mm]: 89
 Number of mounting bores: 2
 Number of Teeth: 12
 Number of Thread Bores: 0
 Rated Power [kW]: 2
 Rotation Direction: Clockwise rotation
 Voltage [V]: 12

MT-119JM
Starter


FORD C-MAX (DM2)
 FORD C-MAX II
 FORD FOCUS C-MAX
 FORD FOCUS II (DA_)
 FORD FOCUS II Station wagon (DA_)
 FORD FOCUS II Tre volumi (DA_)

OE

1229427
 1233234
 1254222
 1368970
 1469712
 1707507

Clamp: Pin "30" M8 B+
 Clamp: Pin "50" M6
 Number of mounting bores: 3
 Number of Teeth: 11
 Number of Thread Bores: 2
 Rated Power [kW]: 1,2
 Rotation Direction: Clockwise rotation
 Voltage [V]: 12

MT-120JM
Starter


AUDI A1 (8X1, 8XF)
 AUDI A1 Sportback (8XA, 8XK)
 AUDI A3 (8P1)
 AUDI A3 Cabriolet (8P7)
 AUDI A3 Sportback (8PA)
 AUDI Q3 (8U)

OE

02M911023N
 02M911023NX
 02M911023P
 02M911023PX
 02M911024
 02M911024A

Clamp: Pin "50" Plug
 Flange [mm]: 76
 Number of mounting bores: 2
 Number of Teeth: 11
 Number of Teeth: 12
 Number of Thread Bores: 0
 Rated Power [kW]: 2
 Rotation Direction: Anti-clockwise rotation
 Voltage [V]: 12

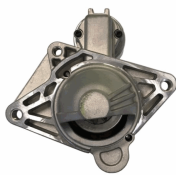
Electrics
MT-121JM
Starter


FORD ESCORT CLASSIC (AAL, ABL)
 FORD ESCORT V (GAL)
 FORD ESCORT V Station wagon (GAL, AVL)
 FORD ESCORT VI (GAL)
 FORD ESCORT VI Station wagon (GAL)
 FORD ESCORT VI Tre volumi (GAL)

OE

1008813
 1008835
 1027300
 1058429
 1061267
 1061627

Clamp: M8, Pin "50" M6
 Flange [mm]: 76
 Number of mounting bores: 3
 Number of Teeth: 10
 Number of Thread Bores: 3
 Rated Power [kW]: 2,2
 Rotation Direction: Clockwise rotation
 Voltage [V]: 12

MT-122JM
Starter


MERCEDES-BENZ CLASSE X (470)
 NISSAN NAVARA Pick-up (D23)
 NISSAN QASHQAI / QASHQAI +2 (J10, JJ10)
 NISSAN X-TRAIL (T31)
 RENAULT ALASKAN
 RENAULT ESPACE IV (JK0/1_)

OE

1202193
 1202204
 1202395
 2330000Q0A
 2330000Q0D
 2330000Q1E

Clamp: Pin "30" M8 B+
 Clamp: Pin "50" M5
 Flange [mm]: 76
 Number of mounting bores: 3
 Number of Teeth: 10
 Number of Teeth: 11
 Number of Thread Bores: 0
 Rated Power [kW]: 2,2
 Rotation Direction: Clockwise rotation
 Voltage [V]: 12

MT-123JM
Starter


HYUNDAI GALLOPER II (JK-01)
 HYUNDAI TERRACAN (HP)
 MITSUBISHI GALANT VI (EA_)
 MITSUBISHI GALANT VI Station wagon (EA_)
 MITSUBISHI L 200 (K7_T, K6_T)
 MITSUBISHI LANCER V (CB/D_A)

OE

23300FY500
 3610042250
 3610042350
 3610042450
 M002T84170
 M002T84171

Clamp: M10
 Flange [mm]: 77
 Number of mounting bores: 2
 Number of Teeth: 12
 Number of Thread Bores: 2
 Rated Power [kW]: 2,2
 Rotation Direction: Clockwise rotation
 Voltage [V]: 12

MT-124JM
Starter


CITROEN C1 (PM_, PN_)
 CITROEN C1 II
 PEUGEOT 107
 PEUGEOT 108
 TOYOTA AYGO (PAB4_, KGB4_)
 TOYOTA AYGO (WNB1_, KGB1_)

OE

1612092980
 1612350580
 281000Q012
 281000Q012D
 281000Q021
 281000Q030

Clamp: Pin "30" M8 B+
 Clamp: Pin "50" M5
 Flange [mm]: 74
 Number of mounting bores: 2
 Number of Teeth: 8
 Number of Thread Bores: 1
 Rated Power [kW]: 1,1
 Rotation Direction: Clockwise rotation
 Voltage [V]: 12

MT-125JM
Starter


FIAT CINQUECENTO (170)
 FIAT PANDA (141A_)
 FIAT SEICENTO (187)
 FIAT UNO (146A/E)
 LANCIA A 112
 SEAT FURA (025A)

OE

0003914191
 0003974104
 3914191
 3915113
 3974104
 4229113

Clamp: M8
 Flange [mm]: 62
 Number of mounting bores: 3
 Number of Teeth: 9
 Number of Thread Bores: 3
 Rated Power [kW]: 0,8
 Rotation Direction: Clockwise rotation
 Voltage [V]: 12

Electrics
MT-126JM
Starter


CITROEN BERLINGO (B9)
 CITROEN C1 (PM_, PN_)
 CITROEN C2 (JM_)
 CITROEN C3 I (FC_)
 CITROEN C3 II
 CITROEN C3 III (SX)

OE

28100YV020
 3647959
 5645100680
 5802AA
 5802EG
 5802Z8

Clamp: M8
 Number of mounting bores: 3
 Number of Teeth: 12
 Number of Thread Bores: 2
 Rated Power [kW]: 1,5
 Rotation Direction: Clockwise rotation
 Voltage [V]: 12

MT-127JM
Starter


AUDI A3 (8P1)
 AUDI A3 Cabriolet (8P7)
 AUDI A3 Sportback (8PA)
 SEAT ALTEA (5P1)
 SEAT ALTEA XL (5P5, 5P8)
 SEAT CORDOBA (6L2)

OE

02Z911023F
 02Z911023FX
 02Z911023H
 02Z911023HX
 02Z911024J
 2Z911023F

Clamp: Pin "30" M8 B+
 Clamp: Pin "50" Plug
 Flange [mm]: 76
 Number of mounting bores: 3
 Number of Teeth: 10
 Number of Thread Bores: 0
 Rated Power [kW]: 2
 Rotation Direction: Anti-clockwise rotation
 Voltage [V]: 12

MT-128JM
Starter


CHEVROLET CORSA Pick-up
 CHEVROLET CORSA Station wagon
 CHEVROLET CORSA Tre volumi
 CHEVROLET TRAX
 HONDA CIVIC VII Hatchback (EU, EP, EV)
 OPEL ASTRA CLASSIC (L48)

OE

1202591
 136934
 2506934
 31200PLZD00
 6202000
 6202043

Clamp: Pin "30" M8 B+
 Clamp: Pin "50" M4
 Flange [mm]: 78
 Number of mounting bores: 2
 Number of Teeth: 13
 Number of Thread Bores: 1
 Rated Power [kW]: 1,4
 Rotation Direction: Clockwise rotation
 Voltage [V]: 12

MT-129JM
Starter


FORD C-MAX (DM2)
 FORD FOCUS C-MAX
 FORD FOCUS II (DA_)
 FORD FOCUS II Cabriolet
 FORD FOCUS II Station wagon (DA_)
 FORD FOCUS II Tre volumi (DA_)

OE

1427763
 1476606
 1529431
 1904993
 4M5T11000FA
 6G9N11000GA

Clamp: M8 B+
 Flange [mm]: 63
 Number of mounting bores: 3
 Number of Teeth: 11
 Number of Thread Bores: 3
 Rated Power [kW]: 2,2
 Rotation Direction: Clockwise rotation
 Voltage [V]: 12

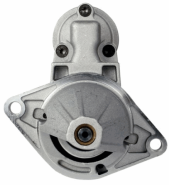
MT-130JM
Starter


BMW 02 (E10)
 BMW 02 Cabriolet (E10)
 BMW 02 Touring (E6)
 BMW 1500-2000 (115, 116, 118, 121)
 BMW 1600 GT Coupe
 BMW 2000-3.2 Coupe (E9)

OE

1005821194
 12411308543
 12411312104
 12411312130
 1312104
 1312130

Clamp: M8, Pin "50" M6
 Flange [mm]: 76
 Number of mounting bores: 2
 Number of Teeth: 9
 Number of Thread Bores: 0
 Rated Power [kW]: 1,7
 Rotation Direction: Clockwise rotation
 Voltage [V]: 12

Electrics
MT-131JM
Starter


DAEWOO LACETTI 2 volumi /Coda spiovente (KLAN)
 FIAT STILO (192)
 FIAT STILO Multi Wagon (192)
 OPEL AGILA (A) (H00)
 OPEL COMBO Tour

OE
 55351508
 55351608

Clamp: M8, Pin "50" M6
 Flange [mm]: 68
 Number of mounting bores: 2
 Number of Teeth: 9
 Number of Thread Bores: 0
 Rated Power [kW]: 1,1
 Rotation Direction: Clockwise rotation
 Voltage [V]: 12

MT-132JM
Starter


HYUNDAI GALLOPER I
 HYUNDAI GALLOPER II (JK-01)
 HYUNDAI TERRACAN (HP)
 MITSUBISHI GALANT II Station Wagon (A16_V)
 MITSUBISHI GALANT IV (A16_)
 MITSUBISHI GALANT V (E5_A, E7_A, E8_A)

OE
 1516954R
 3610042050
 3610047600
 3610047650
 HK988300
 HQ808670

Clamp: M8 B+
 Flange [mm]: 77
 Number of mounting bores: 2
 Number of Teeth: 13
 Number of Thread Bores: 2
 Rated Power [kW]: 2,2
 Rotation Direction: Clockwise rotation
 Voltage [V]: 12

MT-133JM
Starter


CARBODIES TX1
 FORD MAVERICK (UDS, UNS)
 NISSAN NAVARA (D21)
 NISSAN NAVARA (D22)
 NISSAN PATHFINDER (R50)
 NISSAN PICK UP (D21)

OE
 1516934R
 2330002N00
 2330010T01
 2330010T02
 233001W400
 233001W40A

Clamp: M8
 Flange [mm]: 95
 Number of mounting bores: 2
 Number of Teeth: 9
 Number of Thread Bores: 0
 Rated Power [kW]: 2,5
 Rotation Direction: Clockwise rotation
 Voltage [V]: 12

MT-134JM
Starter


FIAT DOBLO (119)
 LANCIA YPSILON (843)
 OPEL AGILA (A) (H00)
 OPEL AGILA (B) (H08)
 OPEL ASTRA CLASSIC (L48)
 OPEL ASTRA H (L48)

OE
 3110084EC0
 3110085E00
 31100M86J01
 33353237
 55217673
 55353237

Clamp: Pin "30" M8 B+
 Clamp: Pin "50" M6
 Flange [mm]: 64
 Number of mounting bores: 2
 Number of Teeth: 8
 Number of Teeth: 9
 Number of Thread Bores: 1
 Rated Power [kW]: 1,1
 Rotation Direction: Clockwise rotation
 Voltage [V]: 12

MT-135JM
Starter


TOYOTA YARIS (SCP1_, NLP1_, NCP1_)

OE
 2280009540
 281000J010
 281000J020
 281000J030
 281000J031
 281000J050

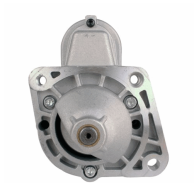
Clamp: Pin "50" Plug
 Flange [mm]: 74
 Number of mounting bores: 2
 Number of Teeth: 8
 Number of Thread Bores: 1
 Rated Power [kW]: 1,2
 Rotation Direction: Clockwise rotation
 Voltage [V]: 12

Electrics
MT-136JM
Starter


IVECO DAILY I Autobus
 IVECO DAILY I Cassone / Furgonato / Promiscuo
 IVECO DAILY I Pianale piatto/Telaio
 IVECO DAILY I Ribaltabile
 IVECO DAILY II Cassone / Furgonato / Promiscuo

OE
 004719664
 106055
 1516663R
 1516714R
 1516792R
 2995140

Clamp: M8
 Flange [mm]: 110
 Number of mounting bores: 3
 Number of Teeth: 9
 Number of Thread Bores: 1
 Rated Power [kW]: 2,2
 Rotation Direction: Clockwise rotation
 Voltage [V]: 12

MT-137JM
Starter


AUTOBIANCHI Y10
 FIAT PANDA (141A_)
 FIAT TIPO (160)
 FIAT UNO (146A/E)
 LANCIA Y10 (156)

OE
 46231510
 46402984
 5999906
 7539303
 7612952
 7621040

Clamp: M8
 Flange [mm]: 64
 Number of mounting bores: 3
 Number of Teeth: 9
 Number of Thread Bores: 1
 Rated Power [kW]: 0,8
 Rotation Direction: Clockwise rotation
 Voltage [V]: 12

MT-138JM
Starter


CHEVROLET AVEO 2 volumi /Coda spiovente (T200)
 CHEVROLET AVEO 2 volumi /Coda spiovente (T250, T255)
 CHEVROLET AVEO Tre volumi (T200)
 CHEVROLET AVEO Tre volumi (T250, T255)

OE
 09000700
 09000756
 09117031
 09130838
 09133598
 09163856

Clamp: M8, Pin "50" M6
 Flange [mm]: 68
 Number of mounting bores: 2
 Number of Teeth: 10
 Number of Thread Bores: 0
 Rated Power [kW]: 1,3
 Rotation Direction: Clockwise rotation
 Voltage [V]: 12

MT-139JM
Starter


DACIA LOGAN (LS_)
 DACIA LOGAN II
 DACIA LOGAN MCV II
 DACIA SANDERO
 DACIA SANDERO II
 RENAULT CLIO Grandtour (KR0/1_)

OE
 2330000QAM
 2330000QAY
 5802X6
 7700864608
 7700865213
 7700867838

Clamp: M8
 Flange [mm]: 63,5
 Number of mounting bores: 3
 Number of Teeth: 9
 Number of Thread Bores: 1
 Rated Power [kW]: 0,9
 Rotation Direction: Clockwise rotation
 Voltage [V]: 12

MT-140JM
Starter


TOYOTA AURIS (NRE15_, ZZE15_, ADE15_, ZRE15_, NDE15_)
 TOYOTA YARIS (SCP9_, NSP9_, KSP9_, NCP9_, ZSP9_)

OE
 281000N010

Clamp: Pin "50" Plug
 Flange [mm]: 74
 Number of mounting bores: 2
 Number of Teeth: 9
 Number of Thread Bores: 1
 Rated Power [kW]: 1,1
 Rotation Direction: Clockwise rotation
 Voltage [V]: 12

Electrics

MT-141JM

Starter



LEXUS IS II (GSE2_, ALE2_, USE2_)
 TOYOTA AURIS (NRE15_, ZZE15_, ADE15_, ZRE15_, NDE15_)
 TOYOTA AURIS (NZE18_, ZRE18_)
 TOYOTA AURIS TOURING SPORTS (ADE18_, ZWE18_, ZRE18_)

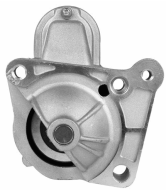
OE

281000G040
 281000R010
 281000R01084
 281000R030
 281000R03084
 281000R060

Clamp: Pin "30" M8 B+
 Clamp: Pin "50" Plug
 Flange [mm]: 74
 Number of mounting bores: 2
 Number of Teeth: 9
 Number of Thread Bores: 2
 Rated Power [kW]: 2
 Rotation Direction: Clockwise rotation
 Voltage [V]: 12

MT-142JM

Starter



MITSUBISHI CARISMA (DA_)
 MITSUBISHI CARISMA Tre volumi (DA_)
 MITSUBISHI SPACE STAR (DG_A)
 NISSAN PRIMERA (P12)
 NISSAN PRIMERA Hatchback (P12)
 NISSAN PRIMERA Station wagon (WP12)

OE

1810A048
 2330000Q0E
 2330000QAC
 2330000QAE
 23300AW300
 23300AW302

Clamp: Pin "30" M8 B+
 Clamp: Pin "50" M5
 Number of mounting bores: 4
 Number of Teeth: 11
 Number of Thread Bores: 3
 Rated Power [kW]: 2,1
 Rotation Direction: Clockwise rotation
 Voltage [V]: 12

MT-143JM

Starter



MERCEDES-BENZ CLASSE A (W168)
 MERCEDES-BENZ Vaneo (414)

OE

0051511601
 005151160180
 0051517401
 005151740180
 A0051511601
 A005151160180

Clamp: M8, Pin "50" M6
 Flange [mm]: 70
 Number of mounting bores: 2
 Number of Teeth: 10
 Number of Thread Bores: 0
 Rated Power [kW]: 1,7
 Rotation Direction: Clockwise rotation
 Voltage [V]: 12

MT-144JM

Starter



OPEL ASTRA GTC J
 OPEL ASTRA J
 OPEL ASTRA J Sports Tourer
 OPEL ASTRA J Tre volumi
 OPEL CORSA D
 OPEL MERIVA B

OE

1202110
 1202281
 1202421
 55566800
 55568572
 95520115

Clamp: Pin "50" M6
 Flange [mm]: 68
 Number of mounting bores: 2
 Number of Teeth: 9
 Number of Thread Bores: 0
 Rated Power [kW]: 1,1
 Rotation Direction: Clockwise rotation
 Voltage [V]: 12

MT-145JM

Starter



CITROEN BERLINGO (B9)
 CITROEN BERLINGO (K9)
 CITROEN BERLINGO (MF)
 CITROEN C-ELYSEE
 CITROEN C2 (JM_)
 CITROEN C3 AIRCROSS II

OE

12417794971
 12417805098
 1638116880
 3110069K00
 3640318
 5802AE

Clamp: Pin "50" M5
 Number of mounting bores: 4
 Number of Teeth: 11
 Number of Thread Bores: 2
 Rated Power [kW]: 2,2
 Rotation Direction: Clockwise rotation
 Voltage [V]: 12

Electrics
MT-146JM
Starter


AUDI A2 (8Z0)
 AUDI A3 (8L1)
 FORD GALAXY (WGR)
 SEAT ALHAMBRA (7V8, 7V9)
 SEAT AROSA (6H)
 SEAT CORDOBA (6K1, 6K2)

OE

02A911023G
 02A911023GX
 02A911023J
 02A911023JX
 02A911023R
 02A911023RX

Clamp: M8
 Flange [mm]: 76
 Number of mounting bores: 2
 Number of Teeth: 10
 Number of Thread Bores: 0
 Rated Power [kW]: 1,8
 Rotation Direction: Anti-clockwise rotation
 Voltage [V]: 12

MT-147JM
Starter


SUZUKI JIMNY (FJ)
 SUZUKI JIMNY Fuoristrada aperto (SN)
 SUZUKI SAMURAI (SJ)
 SUZUKI SAMURAI Fuoristrada aperto (SJ)
 SUZUKI SJ 413
 SUZUKI VITARA (ET, TA)

OE

1A5118400
 3100083021
 3110060A10
 3110060A10000
 3110060A11
 3110060A12

Clamp: M8
 Flange [mm]: 66
 Number of mounting bores: 2
 Number of Teeth: 8
 Number of Teeth: 9
 Number of Thread Bores: 0
 Rated Power [kW]: 0,9
 Rotation Direction: Clockwise rotation
 Voltage [V]: 12

MT-148JM
Starter


AUDI 80 (89, 89Q, 8A, B3)
 AUDI 80 (8C, B4)
 AUDI 80 Avant (8C, B4)
 AUDI 90 (89, 89Q, 8A, B3)
 AUDI A4 (8D2, B5)
 AUDI A4 (8E2, B6)

OE

068911023P
 068911023R
 068911023RX
 068911023S
 068911023SX
 068911024B

Clamp: M8
 Clamp: Pin "50" 6.3mm Spade
 Flange [mm]: 82,5
 Number of mounting bores: 2
 Number of Teeth: 10
 Number of Teeth: 9
 Number of Thread Bores: 2
 Rated Power [kW]: 1,7
 Rotation Direction: Clockwise rotation
 Voltage [V]: 12

MT-149JM
Starter


MERCEDES-BENZ CLASSE A (W168)
 MERCEDES-BENZ CLASSE A (W169)
 MERCEDES-BENZ CLASSE B (W245)
 MERCEDES-BENZ Vaneo (414)

OE

0041518501
 004151850180
 0051212101
 0051511101
 005151110180
 0051512101

Clamp: Pin "50" M6
 Flange [mm]: 70
 Number of mounting bores: 2
 Number of Teeth: 10
 Number of Teeth: 9
 Number of Thread Bores: 0
 Rated Power [kW]: 1,3
 Rotation Direction: Clockwise rotation
 Voltage [V]: 12

MT-150JM
Starter


FORD MONDEO III (B5Y)
 FORD MONDEO III Station wagon (BWY)
 FORD MONDEO III Tre volumi (B4Y)
 JAGUAR X-TYPE (CF1)
 JAGUAR X-TYPE Estate
 LTI TX

OE

1096338
 1120215
 1140110
 1151641
 1202166
 1214371

Clamp: M8, Pin "50" M6
 Number of mounting bores: 4
 Number of Teeth: 19
 Number of Thread Bores: 0
 Rated Power [kW]: 2,1
 Rotation Direction: Clockwise rotation
 Voltage [V]: 12

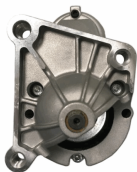
Electrics
MT-151JM
Starter


ALFA ROMEO MITO (955)
 CHRYSLER YPSILON
 CITROEN NEMO Station wagon
 FIAT 500 (312)
 FIAT 500 C (312)
 FIAT 500L

OE

1202203
 1202266
 1202508
 1612794380
 1616323380
 1723350

Clamp: M8 B+
 Flange [mm]: 64
 Number of mounting bores: 2
 Number of Teeth: 10
 Number of Thread Bores: 1
 Rated Power [kW]: 1,4
 Rotation Direction: Clockwise rotation
 Voltage [V]: 12

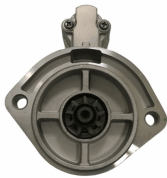
MT-152JM
Starter


DACIA SOLENZA
 DACIA SUPERNOVA
 MAZDA 2 (DE)
 RENAULT 11 (B/C37_)
 RENAULT 19 I (B/C53_)
 RENAULT 19 I Cabriolet (D53_)

OE

0000431120
 0000434120
 1059564
 1516729R
 1516807R
 18213M68KA000

Clamp: M8
 Flange [mm]: 66
 Number of mounting bores: 4
 Number of Teeth: 11
 Number of Teeth: 9
 Number of Thread Bores: 4
 Rated Power [kW]: 1,4
 Rotation Direction: Clockwise rotation
 Voltage [V]: 12

MT-153JM
Starter


NISSAN CABSTAR Pick-up
 NISSAN TRADE Autobus
 NISSAN TRADE Furgonato
 NISSAN TRADE Pianale piatto/Telaio

OE

136914
 233000T600
 233001S900
 2330054T00
 2330090067
 2330090069

Clamp: M8
 Flange [mm]: 95
 Number of mounting bores: 2
 Number of Teeth: 9
 Number of Thread Bores: 0
 Rated Power [kW]: 2,2
 Rotation Direction: Clockwise rotation
 Voltage [V]: 12

MT-154JM
Starter


NISSAN MICRA C+C (K12)
 NISSAN MICRA II (K11)
 NISSAN MICRA III (K12)
 NISSAN NOTE (E11)

OE

233001F710
 233001F715
 233001F770
 233001F771
 233001F772
 233001F772B

Clamp: M8, Pin "50" M6
 Flange [mm]: 70
 Number of mounting bores: 2
 Number of Teeth: 8
 Number of Thread Bores: 1
 Rated Power [kW]: 1,1
 Rotation Direction: Clockwise rotation
 Voltage [V]: 12

MT-155JM
Starter


DACIA DOKKER
 DACIA DUSTER
 DACIA LODGY
 RENAULT CAPTUR
 RENAULT CLIO Grandtour IV
 RENAULT CLIO IV

OE

2330000Q3D
 233000557R
 233000779R
 233001071
 233001071R
 233003307R

Clamp: Pin "30" M8 B+
 Clamp: Pin "50" M5
 Number of mounting bores: 4
 Number of Teeth: 11
 Number of Thread Bores: 3
 Rated Power [kW]: 1
 Rotation Direction: Clockwise rotation
 Voltage [V]: 12

Electrics
MT-156JM
Starter


SMART CABRIO (450)
 SMART CITY-COUPE (450)
 SMART CROSSBLADE (450)
 SMART FORTWO Cabrio (450)
 SMART FORTWO Coupé (450)
 SMART ROADSTER (452)

OE
 0003188V004
 0003188V005
 0003188V006
 0003188V007
 0003188V008
 0003188V008000000

Clamp: M8
 Flange [mm]: 70
 Number of mounting bores: 3
 Number of Teeth: 9
 Number of Thread Bores: 2
 Rated Power [kW]: 0,8
 Rotation Direction: Clockwise rotation
 Voltage [V]: 12

MT-157JM
Starter


MERCEDES-BENZ CLASSE C (W204)
 MERCEDES-BENZ CLASSE C Coupé (C204)
 MERCEDES-BENZ CLASSE C T-Model (S204)
 MERCEDES-BENZ CLASSE E (W212)
 MERCEDES-BENZ CLASSE E Cabriolet (A207)
 MERCEDES-BENZ CLASSE E Coupé (C207)

OE
 0009060126
 000906012680
 0061514501
 006151450180
 6519060026
 651906002680

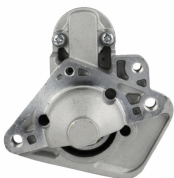
Clamp: M8 B+
 Clamp: Pin "50" M6
 Flange [mm]: 70
 Number of mounting bores: 2
 Number of Teeth: 12
 Number of Thread Bores: 2
 Rated Power [kW]: 1,7
 Rotation Direction: Clockwise rotation
 Voltage [V]: 12

MT-158JM
Starter


FIAT FIORINO Pick up (146)
 FIAT PALIO (178BX)
 FIAT PALIO Weekend (178DX)
 FIAT PUNTO (176)
 FIAT SIENA (178_)
 FIAT STRADA Pick-up (178E)

OE
 46430721
 46439669
 4643970
 46439700
 46440079
 46446291

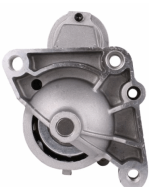
Clamp: Pin "50" M6
 Flange [mm]: 82
 Number of mounting bores: 3
 Number of Teeth: 9
 Number of Thread Bores: 3
 Rated Power [kW]: 1,7
 Rotation Direction: Clockwise rotation
 Voltage [V]: 12

MT-159JM
Starter


DACIA DOKKER
 DACIA DUSTER
 DACIA LODGY
 DACIA LOGAN II
 DACIA LOGAN MCV II
 DACIA SANDERO II

OE
 2330000Q2H
 233000379R
 233004868C
 233004868R
 233007689R
 233009323R

Clamp: M8 B+
 Clamp: Pin "50" Plug
 Flange [mm]: 64
 Number of mounting bores: 2
 Number of Teeth: 12
 Number of Teeth: 13
 Number of Thread Bores: 2
 Rated Power [kW]: 1,7
 Rotation Direction: Clockwise rotation
 Voltage [V]: 12

MT-160JM
Starter


RENAULT AVANTIME (DE0_)
 RENAULT ESPACE III (JE0_)
 RENAULT ESPACE IV (JK0/1_)
 RENAULT LAGUNA II (BG0/1_)
 RENAULT LAGUNA II Grandtour (KG0/1_)
 RENAULT VEL SATIS (BJ0_)

OE
 1202206
 1202208
 2330000Q0B
 2330000Q0C
 2330000QAF
 2330000QAG

Clamp: M8
 Number of mounting bores: 4
 Number of Teeth: 10
 Number of Thread Bores: 3
 Rated Power [kW]: 2
 Rotation Direction: Clockwise rotation
 Voltage [V]: 12

Electrics
MT-161JM
Starter


PIAGGIO APE (MP) VESPACAR
 PIAGGIO APE TM Furgonato
 PIAGGIO APE TM Pianale piatto/Telaio

OE

157715
 803499
 8034993
 834692

Number of mounting bores: 2
 Number of Thread Bores: 0
 Rated Power [kW]: 0,8
 Voltage [V]: 12

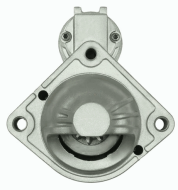
MT-162JM
Starter


FORD C-MAX II
 FORD FOCUS II (DA_)
 FORD FOCUS II Station wagon (DA_)
 FORD FOCUS II Tre volumi (DA_)
 FORD FOCUS III
 FORD FOCUS III Tre volumi

OE

1687623
 1715211
 1778016
 1893556
 1898356
 2033247

Clamp: Pin "30" M8 B+
 Clamp: Pin "50" M6
 Number of mounting bores: 3
 Number of Teeth: 11
 Number of Thread Bores: 0
 Rated Power [kW]: 2,3
 Rotation Direction: Clockwise rotation
 Voltage [V]: 12

MT-163JM
Starter


BMW 1 (E87)
 BMW 3 (E46)
 BMW 3 Cabriolet (E46)
 BMW 3 Compact (E46)
 BMW 3 Coupe (E46)
 BMW 3 Touring (E46)

OE

12417787354
 12417787356
 7787354
 7787356

Clamp: 30H M5
 Clamp: Pin 50 M6
 Flange [mm]: 74
 Number of mounting bores: 2
 Number of Teeth: 10
 Number of Thread Bores: 2
 Rated Power [kW]: 1,6
 Rotation Direction: Clockwise rotation
 Voltage [V]: 12

MT-164JM
Starter


CHEVROLET MATIZ (M200, M250)
 CHEVROLET SPARK
 DAEWOO MATIZ
 DAEWOO MATIZ (KLYA)
 DAEWOO TICO (KLY3)
 SUZUKI WAGON R+ (EM)

OE

3110070B20
 3110075F0
 3110075F00
 3110075F01
 3110075F01000
 3110075F02

Clamp: M8
 Flange [mm]: 75
 Number of mounting bores: 2
 Number of Teeth: 8
 Number of Thread Bores: 2
 Rated Power [kW]: 1
 Rotation Direction: Clockwise rotation
 Voltage [V]: 12

MT-165JM
Starter


SUBARU TREZIA
 TOYOTA AURIS (NRE15_, ZZE15_, ADE15_,
 ZRE15_, NDE15_)
 TOYOTA AURIS (NZE18_, ZRE18_)
 TOYOTA AURIS TOURING SPORTS (ADE18_,
 ZWE18_, ZRE18_)

OE

281000N040
 281000N04084
 281000N060
 2810033090
 2810033110

Clamp: Pin "50" Plug
 Flange [mm]: 74
 Number of mounting bores: 2
 Number of Teeth: 9
 Number of Thread Bores: 1
 Rated Power [kW]: 1,6
 Rotation Direction: Clockwise rotation
 Voltage [V]: 12

Electrics
MT-166JM
Starter


AUDI A6 (4B2, C5)
 DAEWOO MATIZ (KLYA)
 JAGUAR XJ (X350, X358)
 NEW HOLLAND TN-A
 TOYOTA LAND CRUISER (KDJ12_, GRJ12_)

OE
 580 144 18 16
 5801441816

Clamp: M8 B+
 Flange [mm]: 110
 Number of mounting bores: 3
 Number of Teeth: 9
 Number of Thread Bores: 0
 Rated Power [kW]: 2,6
 Rotation Direction: Clockwise rotation
 Voltage [V]: 12

MT-167JM
Starter


TOYOTA AVENSIS VERSO (_CLM2_, _ACM2_)
 TOYOTA CARINA E (_T19_)
 TOYOTA CARINA E Sportswagon (_T19_)
 TOYOTA CARINA E Tre volumi (_T19_)
 TOYOTA COROLLA (_E11_)
 TOYOTA COROLLA Compact (_E11_)

OE
 2810064140
 2810064310
 2810064430
 TT15639

Clamp: M8
 Flange [mm]: 74
 Number of mounting bores: 2
 Number of Teeth: 10
 Number of Thread Bores: 2
 Rated Power [kW]: 2,2
 Rotation Direction: Clockwise rotation
 Voltage [V]: 12

MT-168JM
Starter


FIAT BRAVA (182)
 FIAT BRAVO I (182)
 FIAT DOBLO (119)
 FIAT MAREA (185)
 FIAT MAREA Weekend (185)
 FIAT MULTIPLA (186)

OE
 361002B402
 46231536
 46451529
 46524472
 46531437
 46748349

Clamp: M8, Pin "50" M6
 Flange [mm]: 63,5
 Number of mounting bores: 3
 Number of Teeth: 9
 Number of Thread Bores: 3
 Rated Power [kW]: 1,3
 Rotation Direction: Clockwise rotation
 Voltage [V]: 12

MT-169JM
Starter


BMW 1 (E81)
 BMW 1 (E87)
 BMW 1 (F20)
 BMW 1 (F21)
 BMW 1 Cabriolet (E88)
 BMW 1 Coupé (E82)

OE
 12417798006
 12417801203
 12417802508
 12417804138
 12417804140
 12417811601

Clamp: Pin "30" M8 B+
 Clamp: Pin "50" M6
 Flange [mm]: 69
 Number of mounting bores: 3
 Number of Teeth: 11
 Number of Thread Bores: 0
 Rated Power [kW]: 2,2
 Rotation Direction: Clockwise rotation
 Voltage [V]: 12

MT-170JM
Starter


AUDI A3 (8P1)
 AUDI A3 Cabriolet (8P7)
 AUDI A3 Sportback (8PA)
 AUDI TT (8J3)
 AUDI TT (8N3)
 AUDI TT Roadster (8J9)

OE
 02E911023H
 02E911023HX
 02E911023L
 02E911023LX
 2E911023H
 2E911023HX

Clamp: Pin "50" Plug
 Flange [mm]: 76
 Number of mounting bores: 2
 Number of Teeth: 11
 Number of Thread Bores: 0
 Rated Power [kW]: 2
 Rotation Direction: Anti-clockwise rotation
 Voltage [V]: 12

Electrics

MT-171JM

Starter



DACIA LOGAN (LS_)
 DACIA LOGAN Pick-up (US_)
 DACIA SANDERO
 NISSAN ALMERA II (N16)
 NISSAN ALMERA II Hatchback (N16)
 NISSAN MICRA III (K12)

OE

2330000Q0G
 2330000Q0H
 2330000QAB
 2330000QAW
 2330000QAZ
 2330000QUA

Clamp: M8
 Flange [mm]: 65
 Number of mounting bores: 3
 Number of Teeth: 12
 Number of Thread Bores: 2
 Rated Power [kW]: 1,4
 Rotation Direction: Clockwise rotation
 Voltage [V]: 12

MT-172JM

Starter



BMW 1 Cabriolet (E88)
 HYUNDAI ACCENT III (MC)
 HYUNDAI ACCENT III Tre volumi (MC)
 HYUNDAI ACCENT IV Tre volumi (RB)
 HYUNDAI ELANTRA Tre volumi (MD, UD)
 HYUNDAI GETZ (TB)

OE

361002A000
 361002A100
 361002A300
 TT16345
 TT16345PRO

Clamp: M8 B+
 Clamp: Pin "50" Plug
 Flange [mm]: 77
 Number of mounting bores: 2
 Number of Teeth: 8
 Number of Thread Bores: 2
 Rated Power [kW]: 1,7
 Rotation Direction: Clockwise rotation
 Voltage [V]: 12

MT-173JM

Starter



BMW 1 (E81)
 BMW 1 (E87)
 BMW 3 (E46)
 BMW 3 (E90)
 BMW 3 Cabriolet (E46)
 BMW 3 Cabriolet (E93)

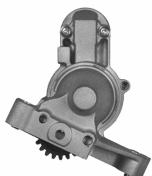
OE

12417794952
 12417796892
 12417798035
 12417798036
 7794952
 7796892

Clamp: Pin "30" M8 B+
 Clamp: Pin "50" M6
 Flange [mm]: 74
 Number of mounting bores: 2
 Number of Teeth: 9
 Number of Thread Bores: 2
 Rated Power [kW]: 1,8
 Rotation Direction: Clockwise rotation
 Voltage [V]: 12

MT-174JM

Starter



CHRYSLER SEBRING (JS)
 CHRYSLER SEBRING Cabriolet (JS)
 DODGE AVENGER
 DODGE CALIBER
 DODGE JOURNEY
 JEEP COMPASS (MK49)

OE

050033440AC
 05033440AA
 05033440AC
 1810A062
 1810A143
 5033440AA

Clamp: M8 B+
 Number of mounting bores: 3
 Number of Teeth: 22
 Number of Thread Bores: 0
 Rated Power [kW]: 2
 Rotation Direction: Anti-clockwise rotation
 Voltage [V]: 12

MT-175JM

Starter



METROCAB Taxi
 TOYOTA CROWN Tre volumi (_S1_)
 TOYOTA HILUX Fuoristrada chiuso (ZN13_, LN9_,
 RN1_, YN8_,
 TOYOTA HILUX II Pick-up (RN6_, RN5_, LN6_,
 YN6_, YN5_, LN

OE

1516979R
 2810005030
 2810054070
 2810054080
 2810054100
 2810054110

Clamp: M8
 Flange [mm]: 82,5
 Number of mounting bores: 2
 Number of Teeth: 10
 Number of Teeth: 11
 Number of Thread Bores: 1
 Rated Power [kW]: 2
 Rotation Direction: Clockwise rotation
 Voltage [V]: 12

Electrics
MT-176JM
Starter


CHEVROLET AVEO 2 volumi /Coda spiovente (T200)
 CHEVROLET AVEO 2 volumi /Coda spiovente (T250, T255)
 CHEVROLET AVEO 2 volumi /Coda spiovente (T300)

OE

25187951
 63522629
 96289430
 96469962
 96497702
 96943429

Clamp: M8
 Flange [mm]: 75
 Number of mounting bores: 2
 Number of Teeth: 8
 Number of Thread Bores: 1
 Position / Degree: 30
 Rated Power [kW]: 0,8
 Rotation Direction: Clockwise rotation
 Voltage [V]: 12

MT-177JM
Starter


DACIA DOKKER
 DACIA DUSTER
 DACIA LODGY
 DACIA LOGAN (LS_)
 DACIA LOGAN II
 DACIA LOGAN MCV (KS_)

OE

2330000QAA
 233001105R
 6025008446
 7700104674
 7700105119
 7711134530

Clamp: M8
 Flange [mm]: 65
 Number of mounting bores: 3
 Number of Teeth: 8
 Number of Teeth: 9
 Number of Thread Bores: 3
 Rated Power [kW]: 1
 Rotation Direction: Clockwise rotation
 Voltage [V]: 12

MT-178JM
Starter


AUDI A1 (8X1, 8XF)
 AUDI A1 Sportback (8XA, 8XK)
 AUDI A3 (8P1)
 AUDI A3 Sportback (8PA)
 SEAT ALTEA (5P1)
 SEAT ALTEA XL (5P5, 5P8)

OE

02T911023R
 02T911023RX
 02T911023S
 02T911023SX
 02T911024A
 02T911024AX

Clamp: M8 B+
 Clamp: Pin "50" Plug
 Flange [mm]: 76
 Number of mounting bores: 2
 Number of Teeth: 10
 Number of Teeth: 9
 Number of Thread Bores: 0
 Rated Power [kW]: 1
 Rotation Direction: Anti-clockwise rotation
 Voltage [V]: 12

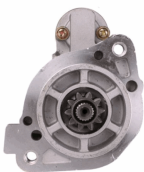
MT-179JM
Starter


FIAT SEDICI
 SUBARU JUSTY III (G3X)
 SUZUKI GRAND VITARA II (JT)
 SUZUKI IGNIS (FH)
 SUZUKI IGNIS II
 SUZUKI JIMNY (FJ)

OE

3110063J00
 3110063J10
 3110075F60
 3110080G0
 3110080G00
 3110080G1

Clamp: Pin "30" M8 B+
 Clamp: Pin "50" 6.4mm Plug
 Flange [mm]: 70
 Number of mounting bores: 2
 Number of Teeth: 8
 Number of Thread Bores: 2
 Rated Power [kW]: 1
 Rotation Direction: Clockwise rotation
 Voltage [V]: 12

MT-180JM
Starter


MINIBUS PAJERO II (V3_W)
 MITSUBISHI PAJERO II (V3_W, V2_W, V4_W)
 MITSUBISHI PAJERO III (V7_W, V6_W)
 MITSUBISHI PAJERO III Fuoristrada aperto (V6_W, V7_W)
 MITSUBISHI PAJERO IV (V8_W, V9_W)

OE

009154720280
 1516512R
 1810A050
 1810A050R
 A009154720280
 M002T63271

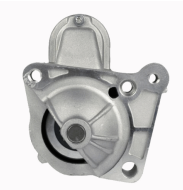
Clamp: M8
 Flange [mm]: 77
 Number of mounting bores: 2
 Number of Teeth: 10
 Number of Thread Bores: 2
 Rated Power [kW]: 2,2
 Rotation Direction: Clockwise rotation
 Voltage [V]: 12

Electrics
MT-181JM
Starter


DAIHATSU HIJET Furgonato (S85)
 DAIHATSU HIJET Pick-up
 PIAGGIO PORTER Autobus
 PIAGGIO PORTER Furgonato
 PIAGGIO PORTER Pianale piatto/Telaio

OE
 2280005711
 2810087548
 2810087551
 2810087551000

Clamp: M8
 Flange [mm]: 74
 Number of mounting bores: 2
 Number of Teeth: 8
 Number of Thread Bores: 0
 Rated Power [kW]: 0,8
 Rotation Direction: Clockwise rotation
 Voltage [V]: 12

MT-182JM
Starter


RENAULT KANGOO (KC0/1_)
 RENAULT MEGANE I (BA0/1_)
 RENAULT MEGANE I Classic (LA0/1_)
 RENAULT MEGANE I Coach (DA0/1_)
 RENAULT MEGANE I Grandtour (KA0/1_)
 RENAULT MEGANE Scenic (JA0/1_)

OE
 6001545511
 7700113267
 7700113627
 7700116282
 7711134297
 7711134790

Clamp: M8
 Flange [mm]: 65
 Number of mounting bores: 3
 Number of Teeth: 12
 Number of Thread Bores: 3
 Rated Power [kW]: 1,7
 Rotation Direction: Clockwise rotation
 Voltage [V]: 12

MT-183JM
Starter


FORD TRANSIT Autobus (E_)
 FORD TRANSIT Autobus (V_)
 FORD TRANSIT Furgonato (E_)
 FORD TRANSIT Furgonato (T_)
 FORD TRANSIT Furgonato (V_)
 FORD TRANSIT Pianale piatto/Telaio (E_)

OE
 1008823
 1024508
 1027928
 1059179
 1073108
 1093471

Clamp: M8, Pin "50" M6
 Flange [mm]: 92
 Number of mounting bores: 3
 Number of Teeth: 13
 Number of Thread Bores: 0
 Rated Power [kW]: 2,3
 Rotation Direction: Clockwise rotation
 Voltage [V]: 12

MT-184JM
Starter


AUDI A3 (8P1)
 AUDI A3 Cabriolet (8P7)
 AUDI A3 Sportback (8PA)
 SEAT ALTEA (5P1)
 SEAT ALTEA XL (5P5, 5P8)
 SEAT IBIZA V (6J5, 6P5)

OE
 0AH911023
 0AH911023A
 0AH911023AX
 0AH911023D
 0AH911023DX
 0AH911023K

Clamp: M8
 Flange [mm]: 76
 Number of mounting bores: 3
 Number of Teeth: 10
 Number of Thread Bores: 0
 Rated Power [kW]: 1,1
 Rotation Direction: Anti-clockwise rotation
 Voltage [V]: 12

MT-185JM
Starter


AUDI A4 (8EC, B7)
 AUDI A4 Avant (8ED, B7)
 AUDI A4 Cabriolet (8H7, B6, 8HE, B7)
 AUDI A6 (4F2, C6)
 AUDI A6 Avant (4F5, C6)
 SEAT EXEO (3R2)

OE
 03G911023
 03G911023X
 TT15338PRO

Clamp: M8 B+
 Flange [mm]: 82
 Number of mounting bores: 2
 Number of Teeth: 9
 Number of Thread Bores: 0
 Rated Power [kW]: 2
 Rotation Direction: Clockwise rotation
 Voltage [V]: 12

Electrics

MT-186JM

Starter



AUDI A1 (8X1, 8XF)
AUDI A1 Sportback (8XA, 8XK)
AUDI A3 (8P1)
AUDI A3 Cabriolet (8P7)
AUDI A3 Sportback (8PA)
SEAT ALTEA (5P1)

OE

02N911023N
02Z911023M
02Z911023MX
02Z911023N
02Z911023NX
02Z911023P

Clamp: M8 B+
Flange [mm]: 76
Number of mounting bores: 3
Number of Teeth: 11
Number of Teeth: 12
Number of Thread Bores: 0
Rated Power [kW]: 1,7
Rotation Direction: Clockwise rotation
Voltage [V]: 12

MT-187JM

Starter



NISSAN NAVARA (D40)
NISSAN PATHFINDER (R51)

OE

23300EB300
23300EB30A
23300EB30B
23300EB30REX
23300EB71B
23300EB71E

Clamp: Pin "30" M8 B+
Clamp: Pin "50" M5
Flange [mm]: 70
Number of mounting bores: 2
Number of Teeth: 11
Number of Teeth: 12
Number of Thread Bores: 2
Rated Power [kW]: 2
Rotation Direction: Clockwise rotation
Voltage [V]: 12

MT-188JM

Starter



CITROEN AX (ZA-)
CITROEN BERLINGO (B9)
CITROEN BERLINGO (MF)
CITROEN BX (XB-)
CITROEN BX Break (XB-)
CITROEN C-ELYSEE

OE

1516758R
3960404
534054A
534054B
534054C
534054D

Clamp: M8
Clamp: Pin "50" 6.4mm Plug
Number of mounting bores: 3
Number of Teeth: 10
Number of Teeth: 9
Number of Thread Bores: 1
Rated Power [kW]: 0,9
Rotation Direction: Clockwise rotation
Voltage [V]: 12